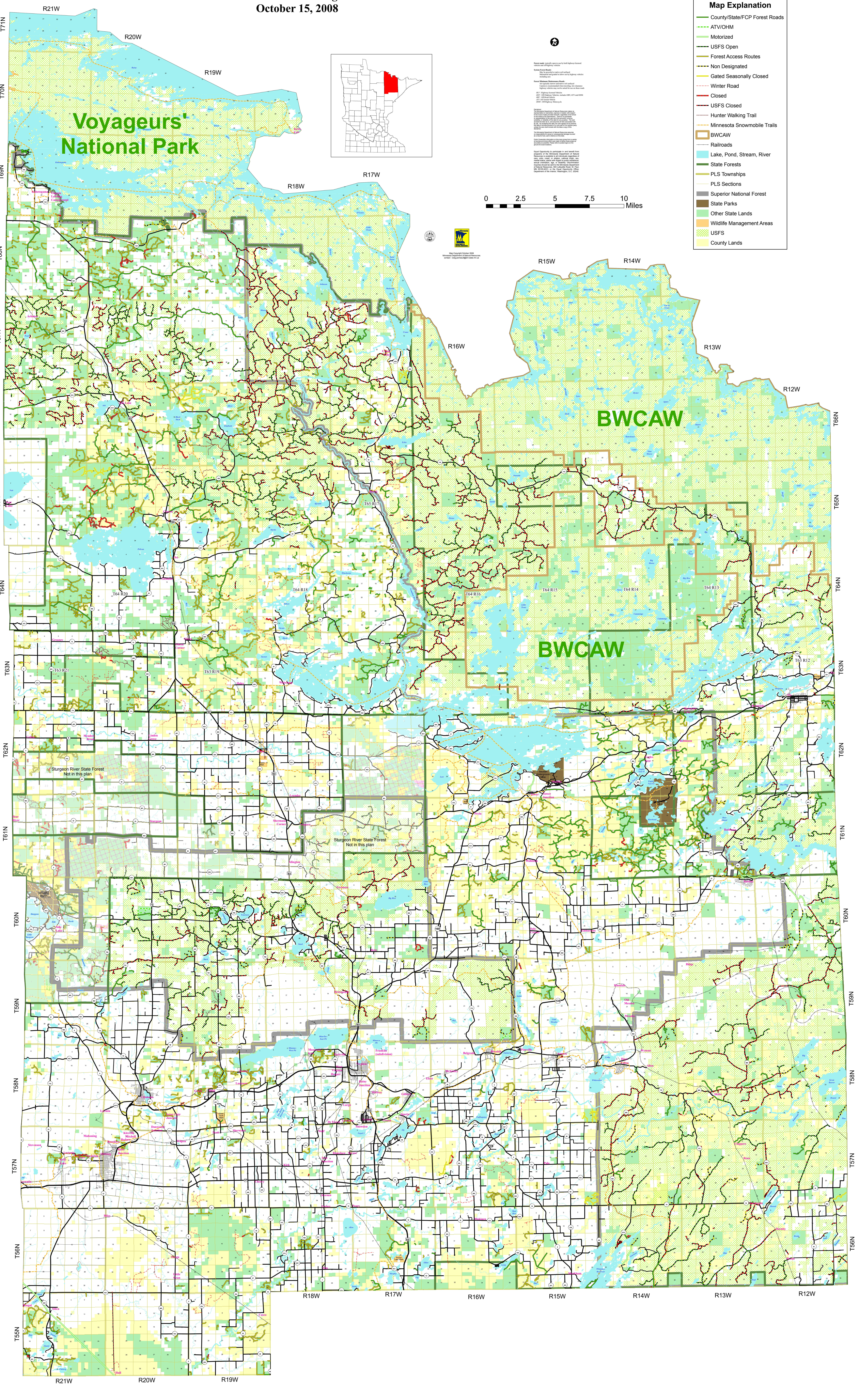
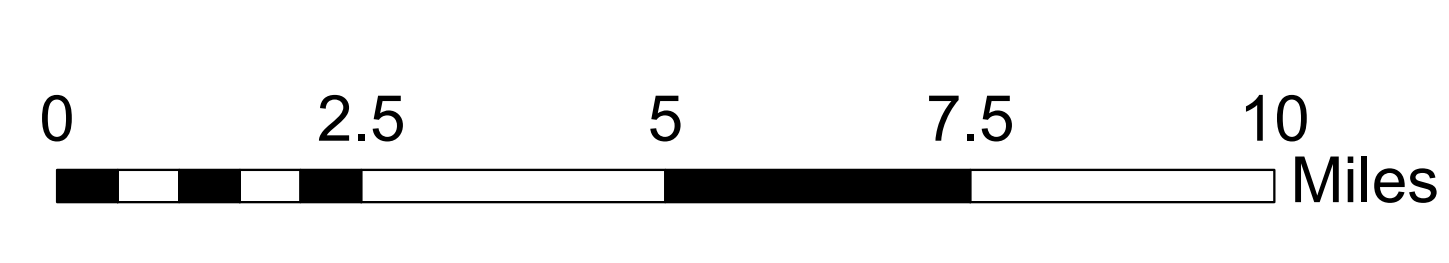
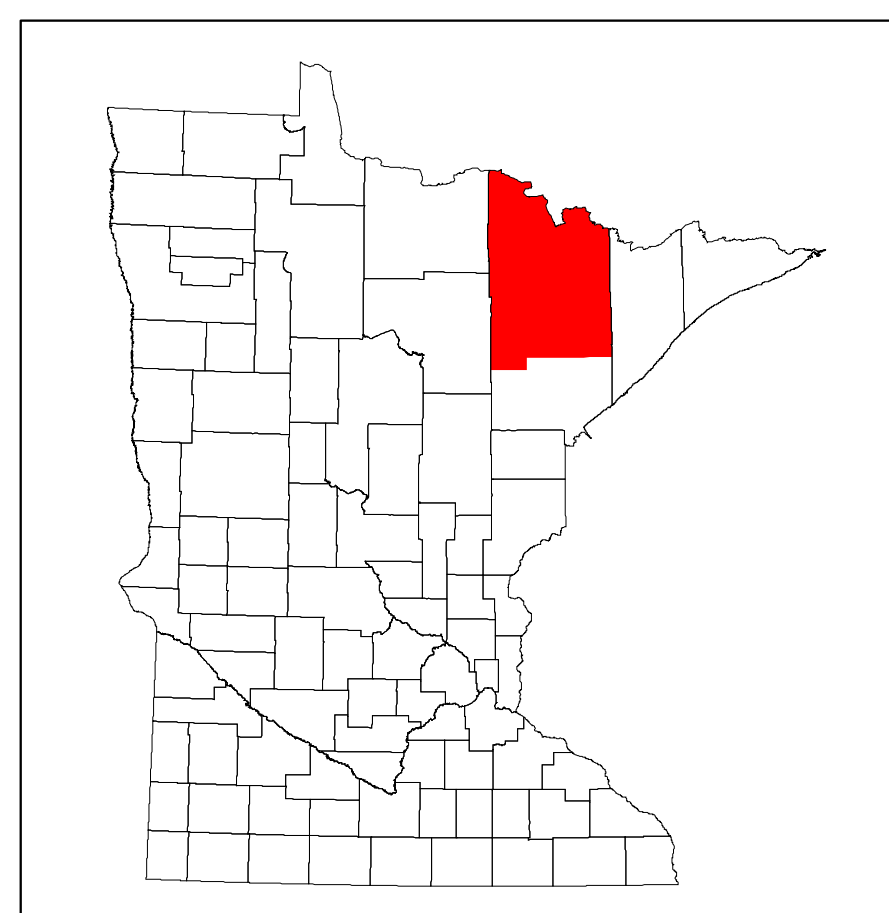


North St. Louis County  
Forest Road and Trail Designation Plan  
October 15, 2008

Final Draft

Map Explanation	
	County/State/FCP Forest Roads
	ATV/OHM
	Motorized
	USFS Open
	Forest Access Routes
	Non Designated
	Gated Seasonally Closed
	Winter Road
	Closed
	USFS Closed
	Hunter Walking Trail
	Minnesota Snowmobile Trails
	BWCAW
	Railroads
	Lake, Pond, Stream, River
	State Forests
	PLS Townships
	PLS Sections
	Superior National Forest
	State Parks
	Other State Lands
	Wildlife Management Areas
	USFS
	County Lands



Sturgeon River State Forest  
Not in this plan

Sturgeon River State Forest  
Not in this plan