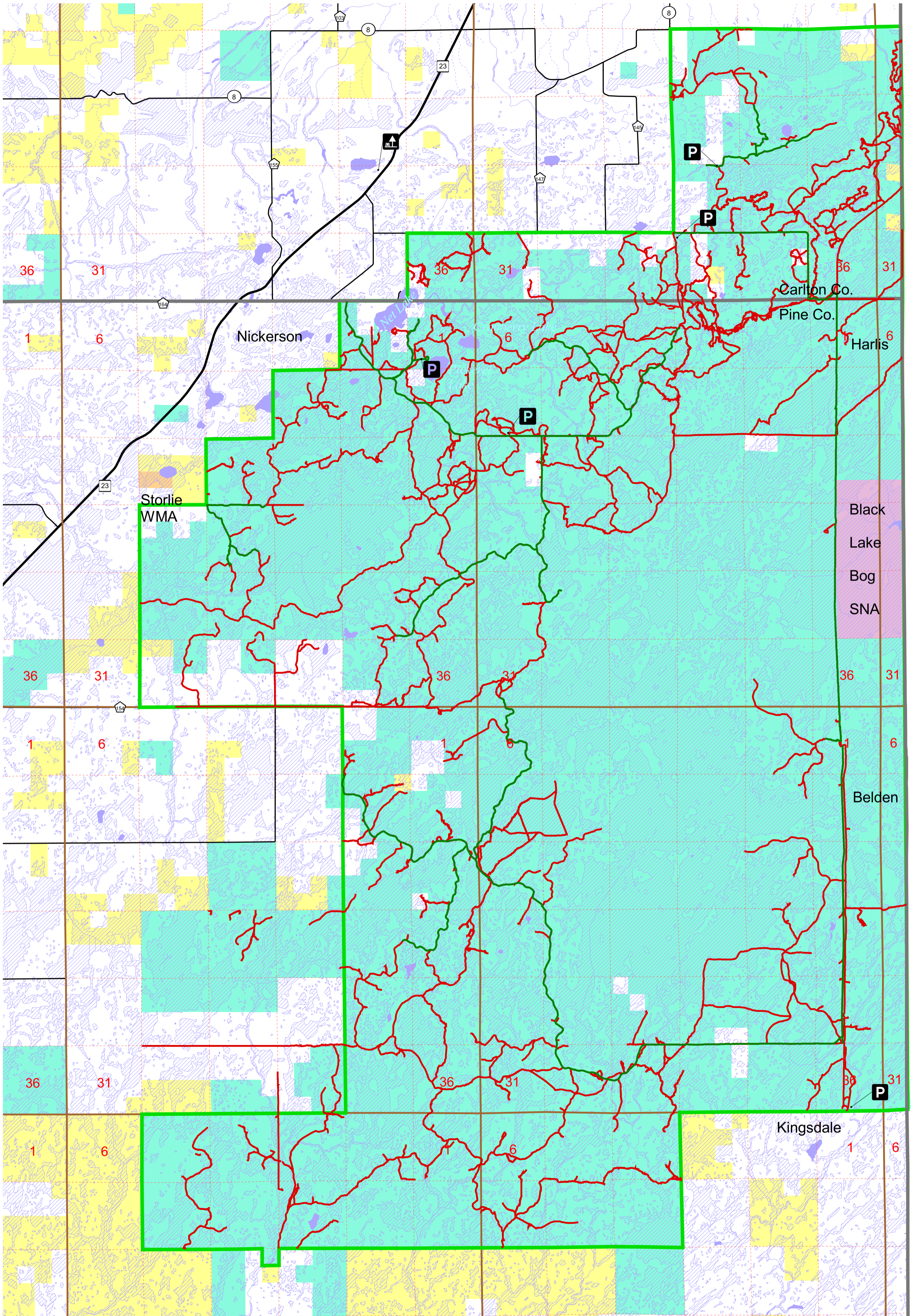


# Nemadji State Forest Forest Road and Trail Designation Plan Off Road Vehicle (ORV) Routes



-  Routes Where ORV Use is Allowed
-  Routes Where ORV Use is Prohibited
-  County Tax-Forfeit
-  Scientific and Natural Areas
-  State Parks
-  Wildlife Management Area
-  State Forestry Lands
-  State Forest Boundary
-  Wetlands

**Disclaimer:**  
The Minnesota Department of Natural Resources makes no representation or warranties, express or implied, with respect to the reuse of data provided herewith, regardless of its format or the means of its transmission. There is no guarantee or representation to the user as to the accuracy, currency, suitability, or reliability of this data for any purpose. The user accepts the data 'as is', and assumes all risks associated with its use. By accepting this data, the user agrees not to transmit this data or provide access to it or any part of it to another party unless the user shall include with the data a copy of this disclaimer. The Minnesota Department of Natural Resources assumes no responsibility for actual or consequential damage incurred as a result of any user's reliance on this data.

Public Ownership information on this map comes from a variety of sources:

State Park, Wildlife and County Tax-Forfeit lands are represented as 40 acre parcels. Those 40's not wholly under public ownership are not displayed on this map.

NOTE: Snowmobiles are considered by State Statute to be "non-motorized".

