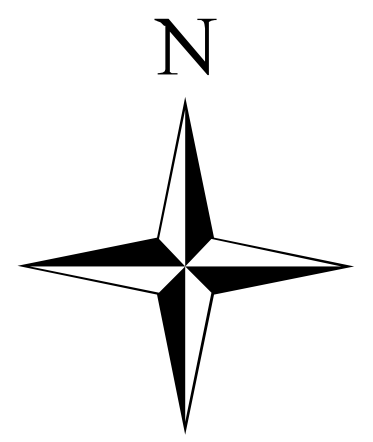
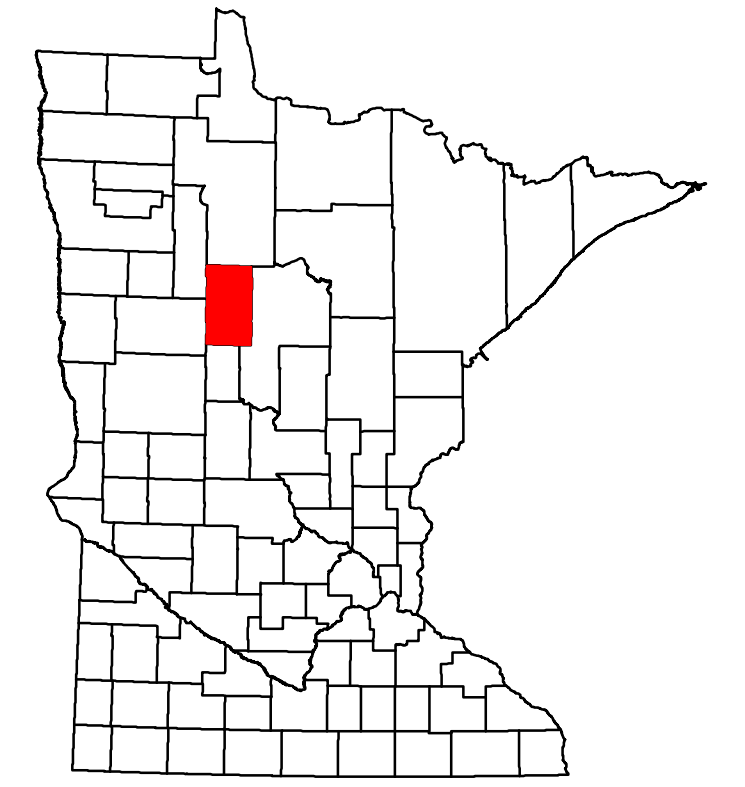


Hubbard County

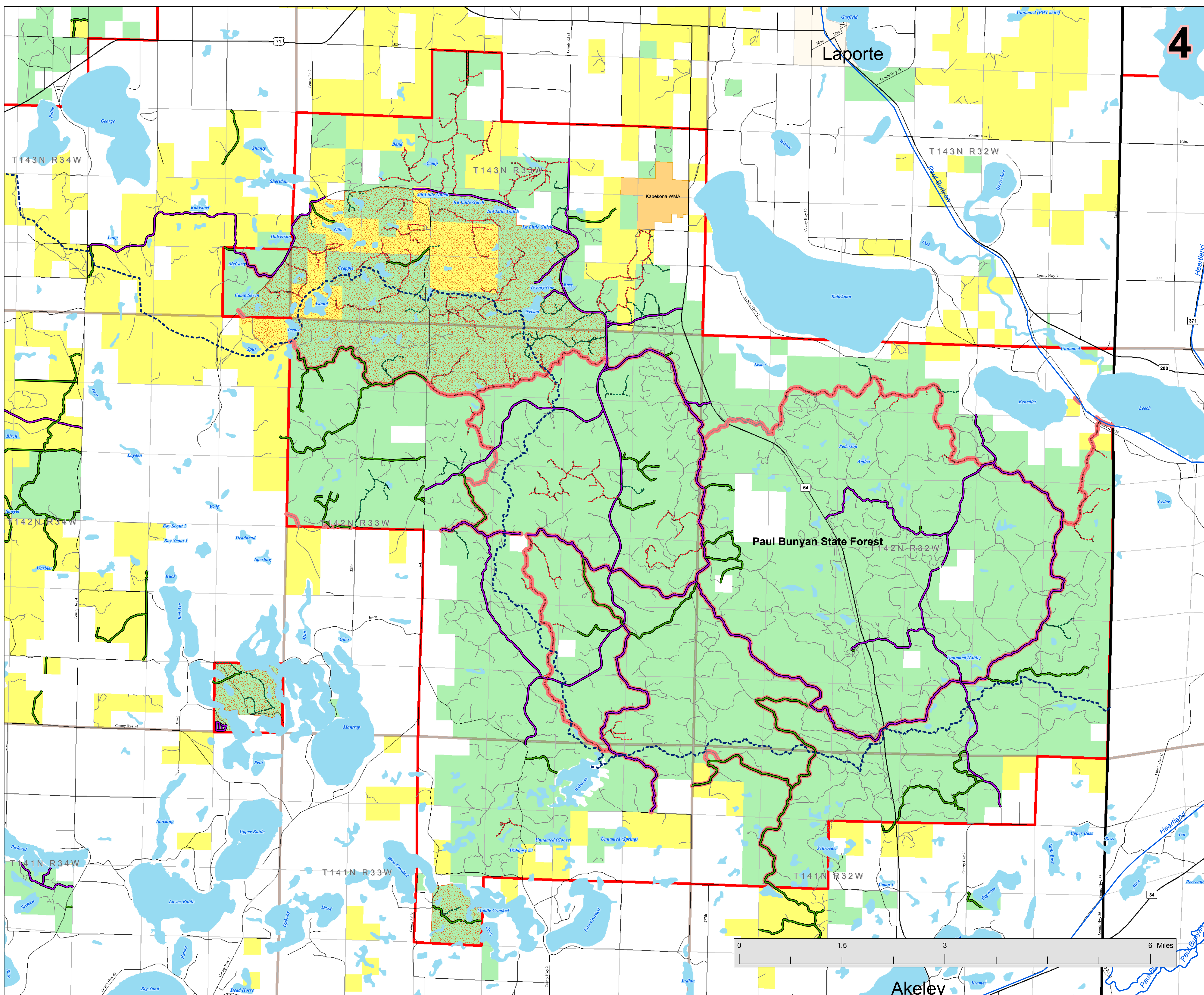
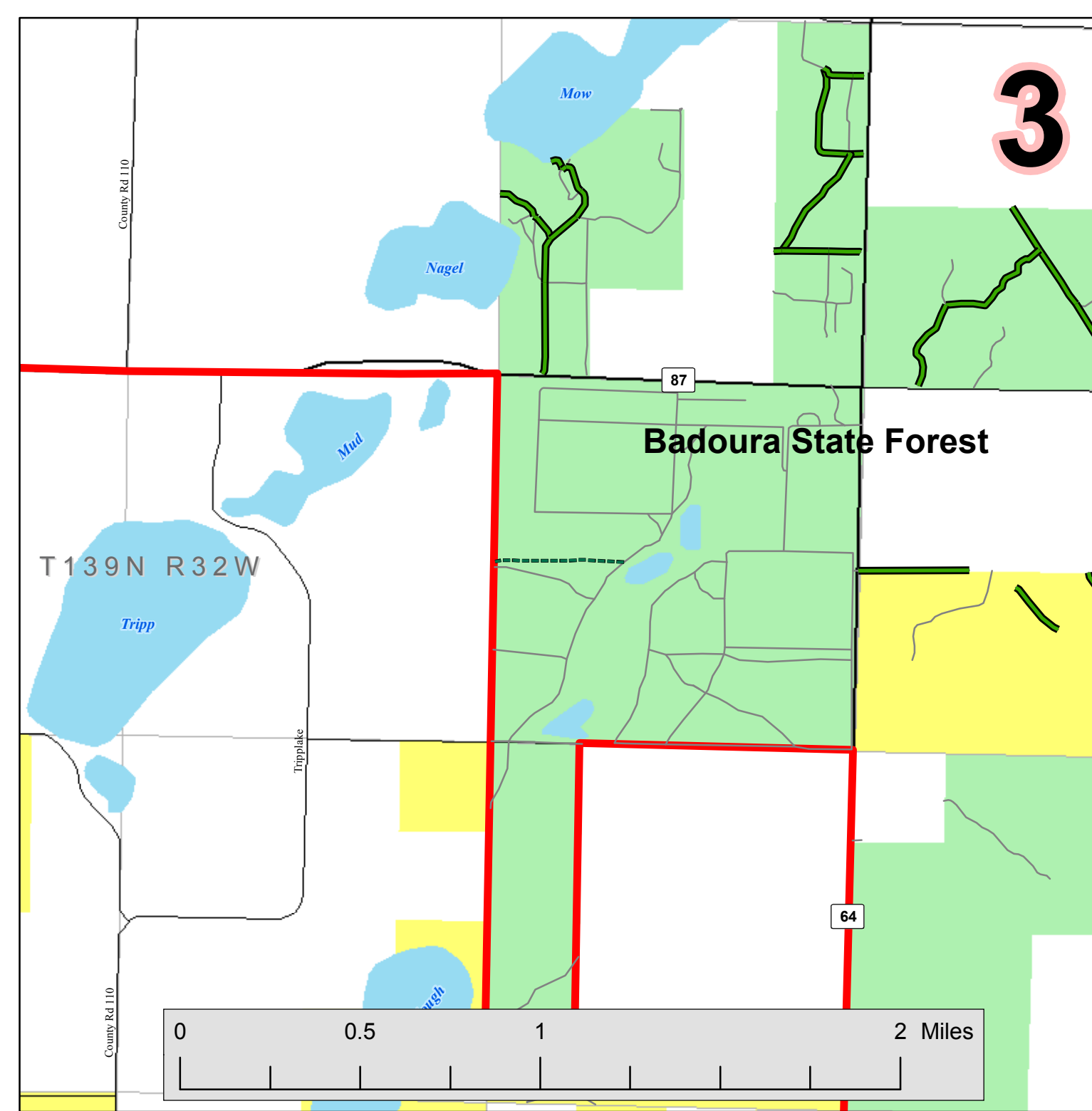
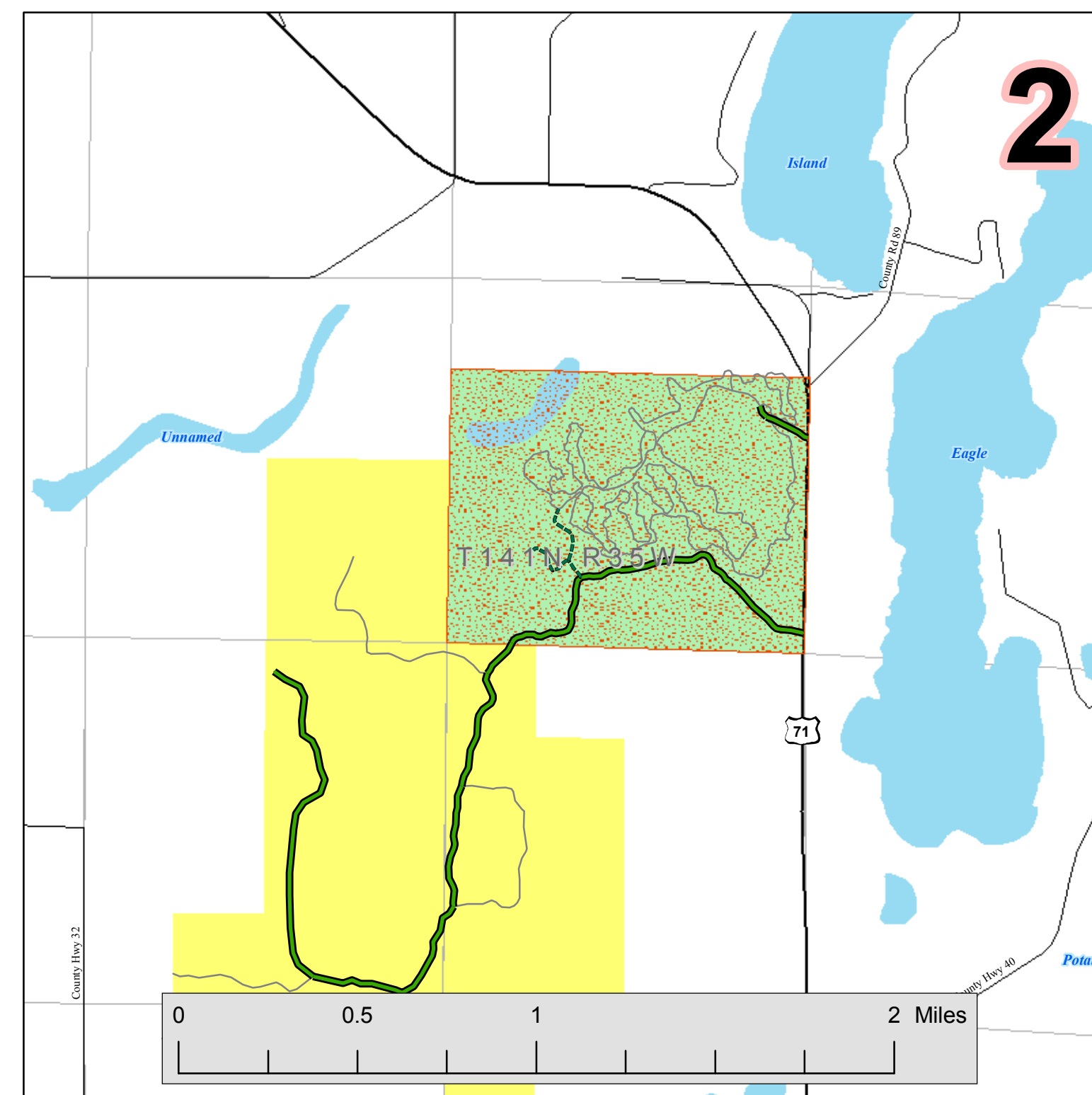
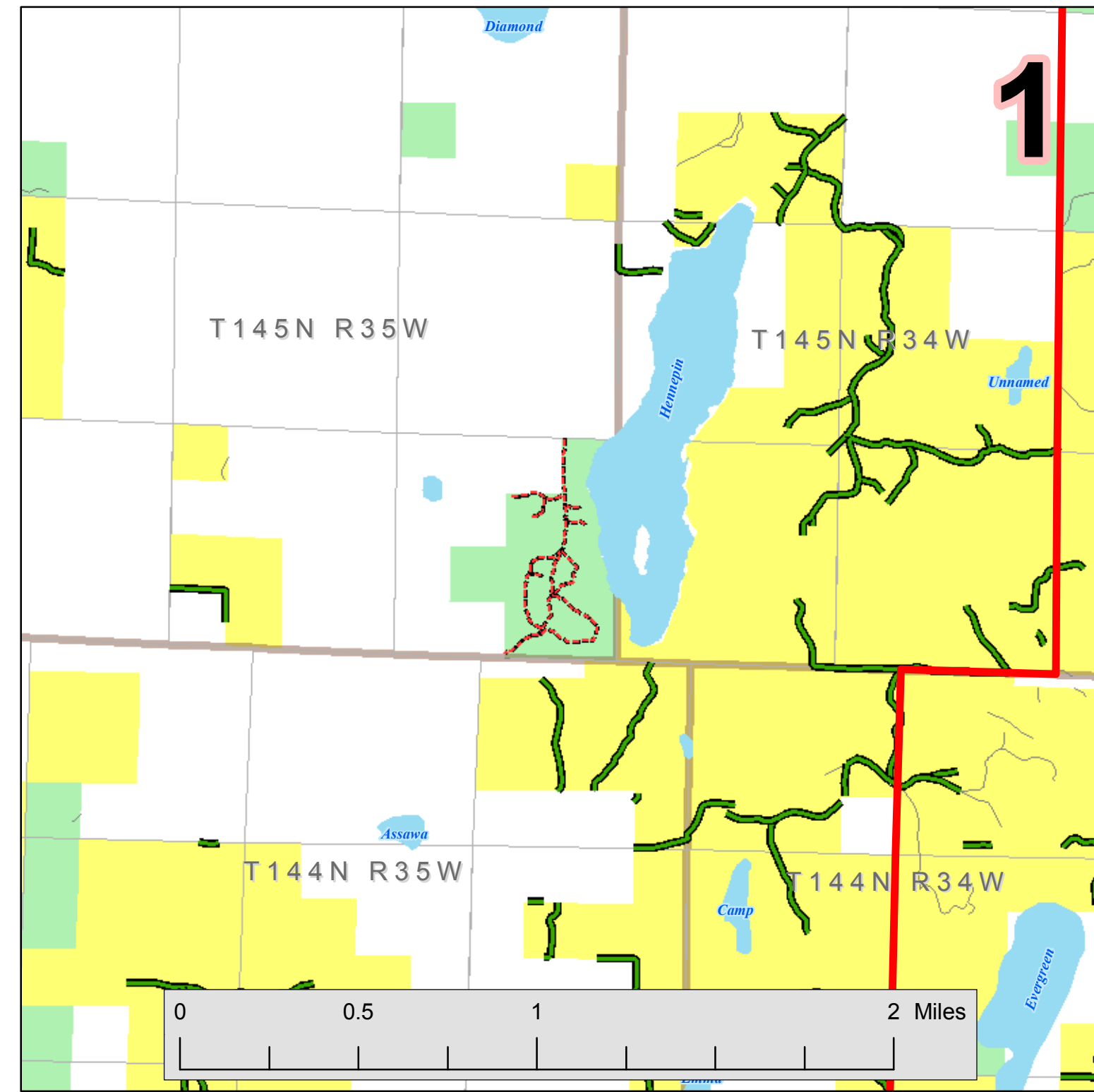
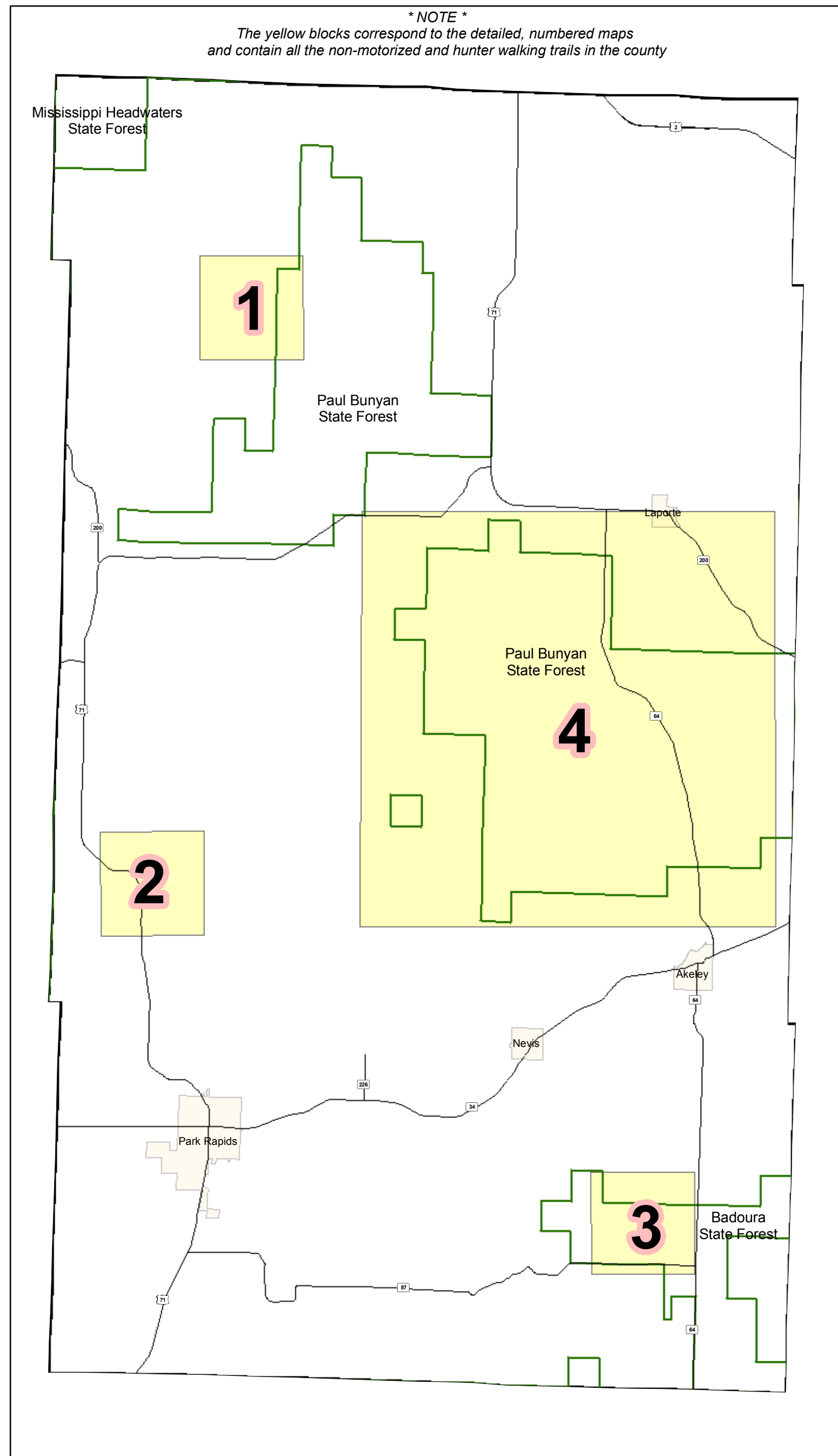
Forest Road and Trail Designation Plan

Details of Non-Motorized Trails

DNR Administered Only



Hubbard County



Legend

- Interstate
- Federal and State Trunk
- County and Township Roads
- Min. Maint. Forest Roads
- System Forest Roads
- Hunter Walking Trails
- Non-Motorized Trails
- Unit Snowmobile Trails
- All Inventoried Routes
- DNR Administered State Trails
- North Country Trail
- State Forests
- Areas with Limitations on Off-trail and Non-designated Trail Use
- State Forestry Lands
- County Tax-Forfeit Lands
- Wildlife Management Areas

Disclaimer:
The Minnesota Department of Natural Resources makes no representation or warranties, express or implied, with respect to the reuse of data provided herewith, regardless of its format or the means of its transmission. There is no guarantee or representation to the user as to the accuracy, currency, suitability, or reliability of this data for any purpose. The user accepts the data 'as is', and assumes all risks associated with its use. By accepting this data, the user agrees not to transmit this data or provide access to it or any part of it to another party unless the user shall include with the data a copy of this disclaimer.

The Minnesota Department of Natural Resources assumes no responsibility for actual or consequential damage incurred as a result of any user's reliance on this data.

Public Ownership information on this map comes from a variety of sources and every effort was made to define these areas as accurately as possible. Please refer to posted signs on the ground for exact locations.

Equal Opportunity to participate in and benefit from programs of the Minnesota Department of Natural Resources is available to all individuals regardless of race, color, creed, or religion, national origin, sex, marital status, status with regard to public assistance, sexual orientation, age, or disability. Discrimination inquiries should be sent to the Minnesota Department of Natural Resources, 500 Lafayette Road, St. Paul, MN 55155-4031, or the Equal Opportunity Office, Department of the Interior, Washington, D.C. 20240.



Hubbard County

Forest Road and Trail Designation Plan

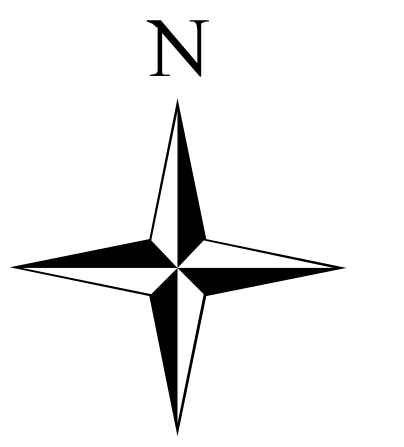
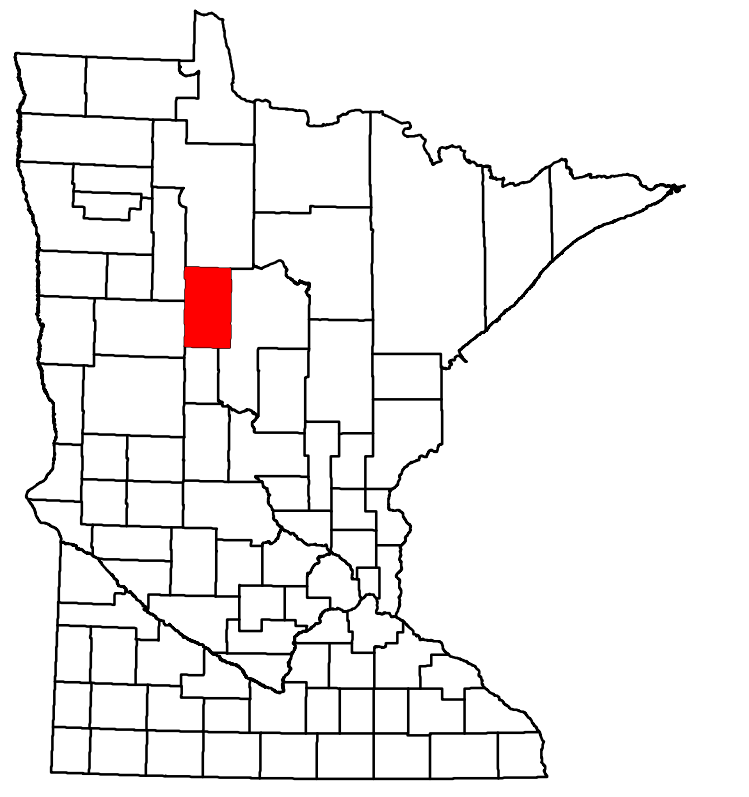
Areas With Limitations on Off-Trail and Non-Designated Trail Use

(as per MS 84.926, Subd5.)

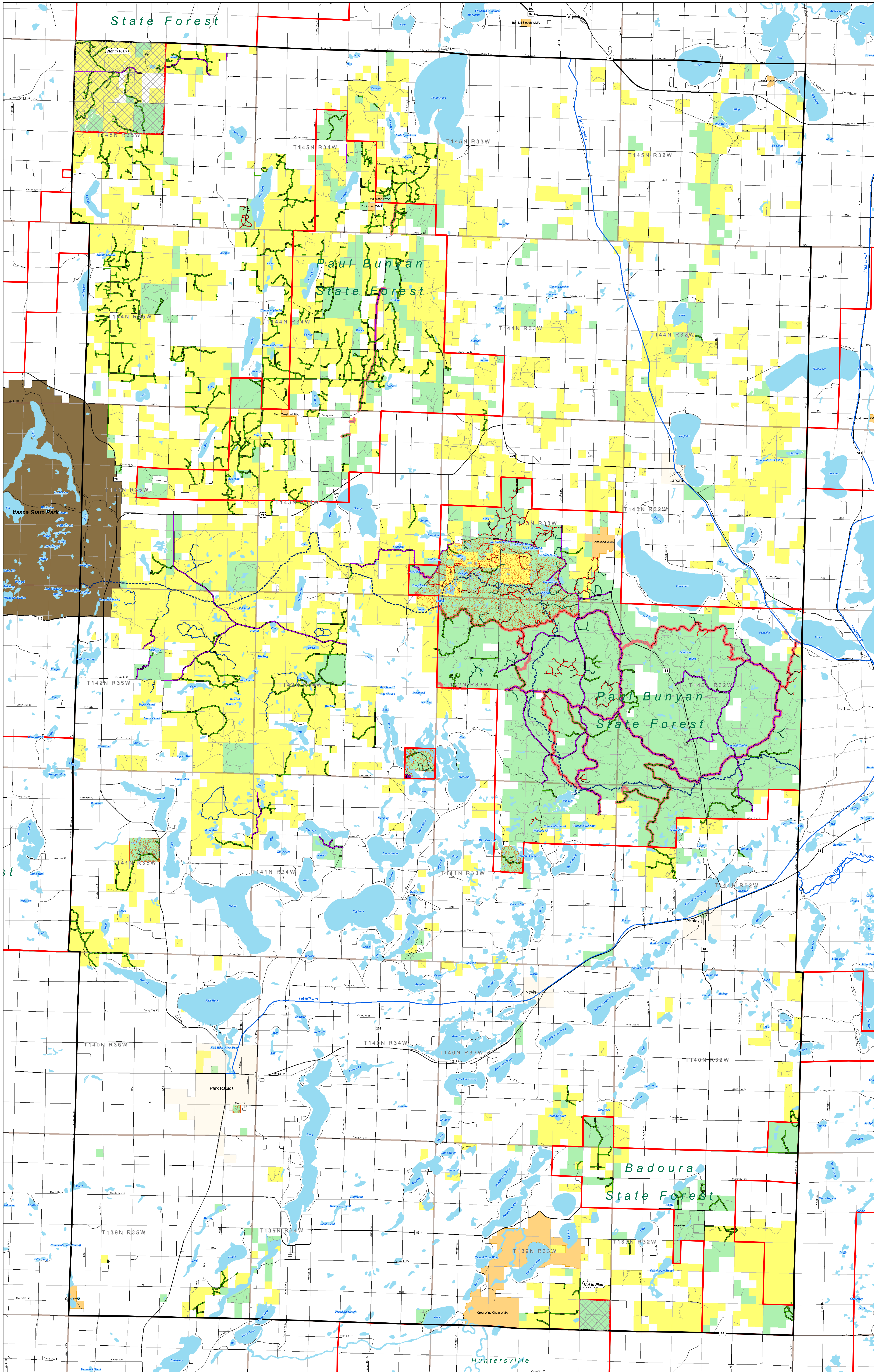
and

Non-Motorized Trails

DNR and County Administered



0 1 2 4 Miles



Legend

- Interstate
- Federal and State Trunk
- County and Township Roads
- Min. Maint. Forest Roads
- System Forest Roads
- Hunter Walking Trails
- Non-Motorized Trails
- County Hunter Walking Trails
- Unit Snowmobile Trails
- All Inventoried Routes
- DNR Administered State Trails
- North Country Trail
- State Forests
- Areas With Limitations on Off-Trail and Non-Designated Trail Use
- State Forestry Lands
- County Tax-Forfeit Lands
- State Park
- Wildlife Management Areas

Disclaimer:
The Minnesota Department of Natural Resources makes no representation or warranties, express or implied, with respect to the reuse of data provided herewith, regardless of its format or the means of its transmission. There is no guarantee or representation to the user as to the accuracy, currency, suitability, or reliability of this data for any purpose. The user accepts the data "as is", and assumes all risks associated with its use. By accepting this data, the user agrees not to transmit this data or provide access to it or any part of it to another party unless the user shall include with the data a copy of this disclaimer.

The Minnesota Department of Natural Resources assumes no responsibility for actual or consequential damage incurred as a result of any user's reliance on this data.

Public Ownership information on this map comes from a variety of sources and every effort was made to define these areas as accurately as possible. Please refer to posted signs on the ground for exact locations.

Equal Opportunity to participate in and benefit from programs of the Minnesota Department of Natural Resources is available to all individuals regardless of race, color, creed, or religion, national origin, sex, marital status, status with regard to public assistance, sexual orientation, age, or disability. Discrimination inquiries should be sent to the Minnesota Department of Natural Resources, 500 Lafayette Road, St. Paul, MN 55155-4031, or the Equal Opportunity Office, Department of the Interior, Washington, D.C. 20240.

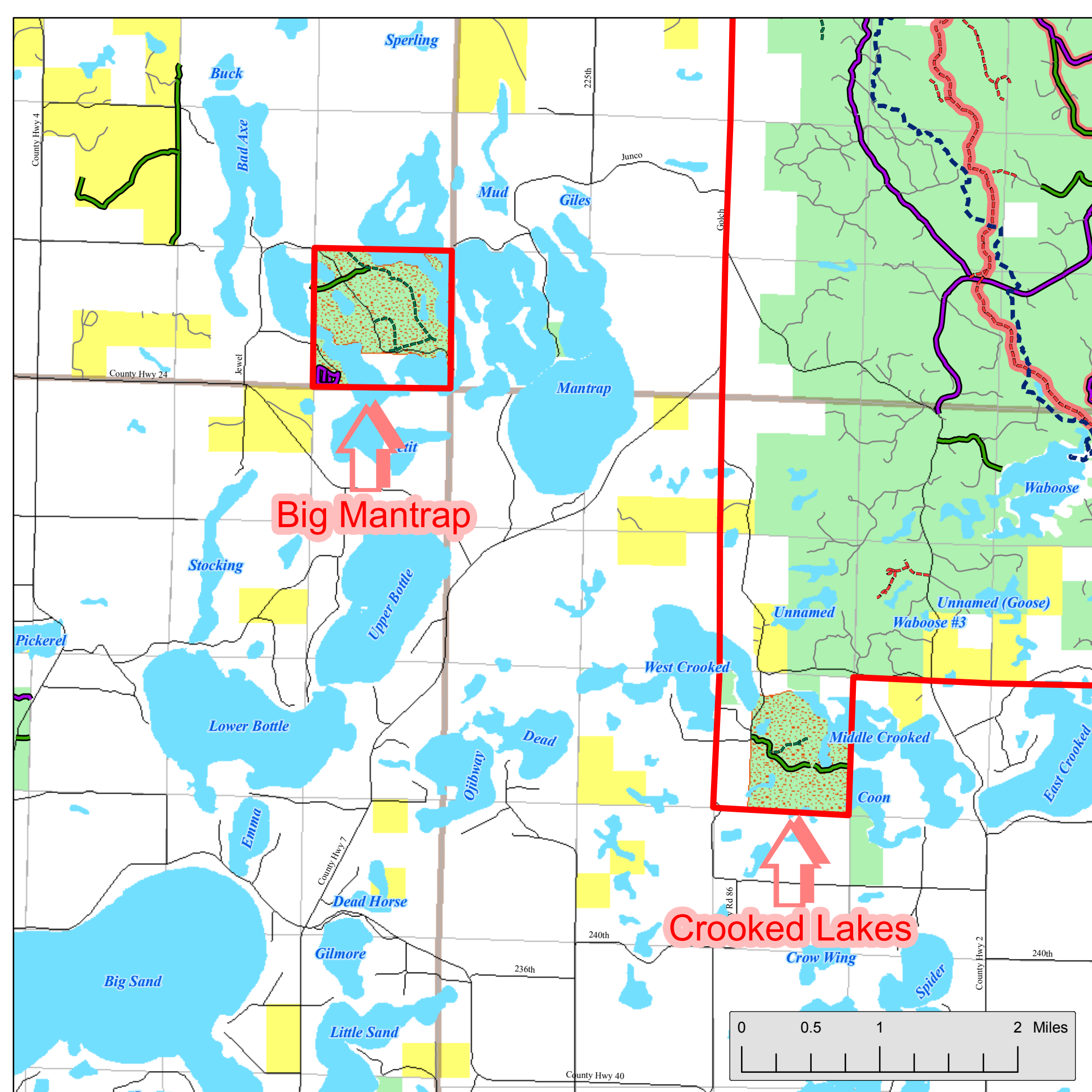
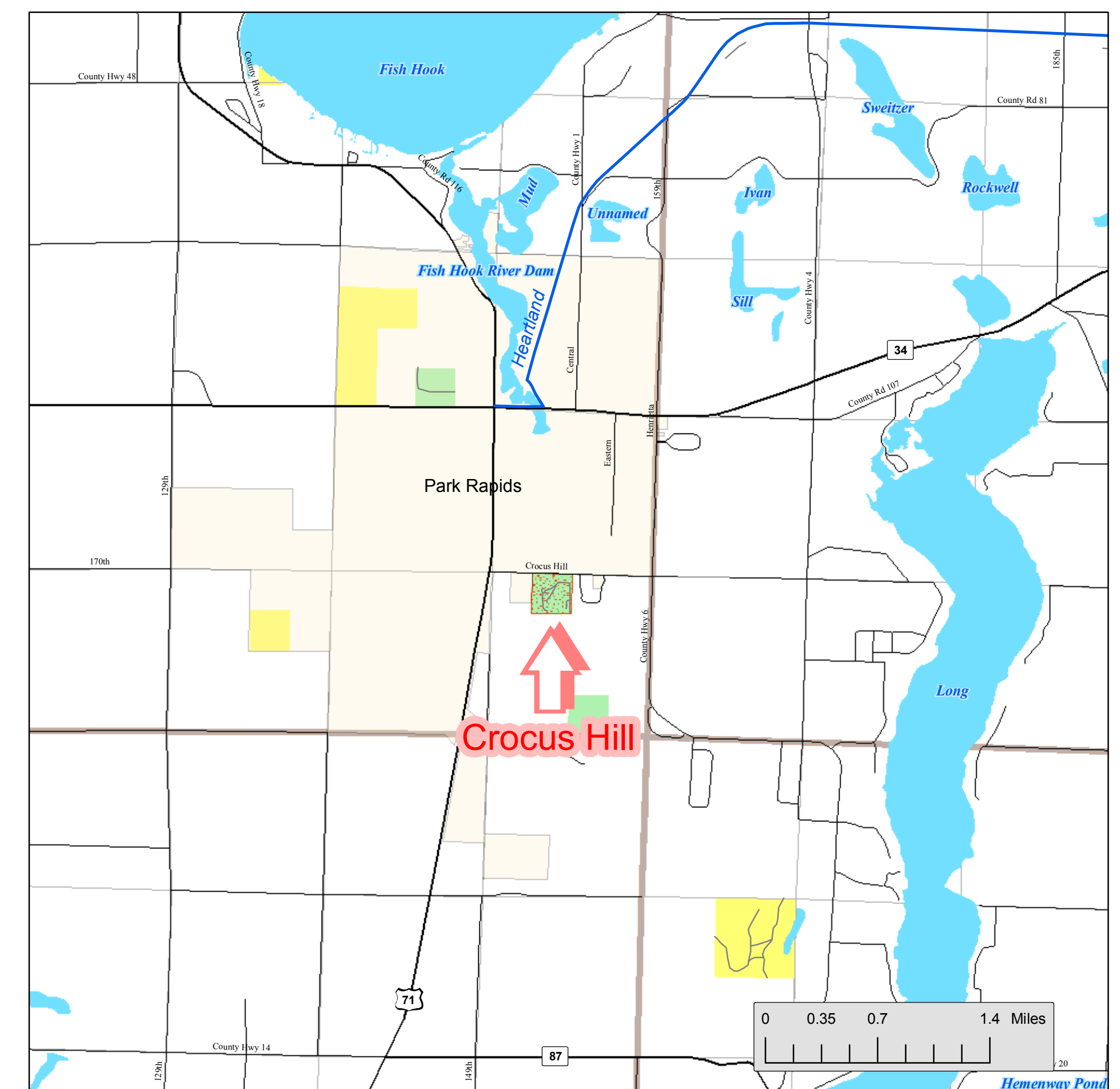
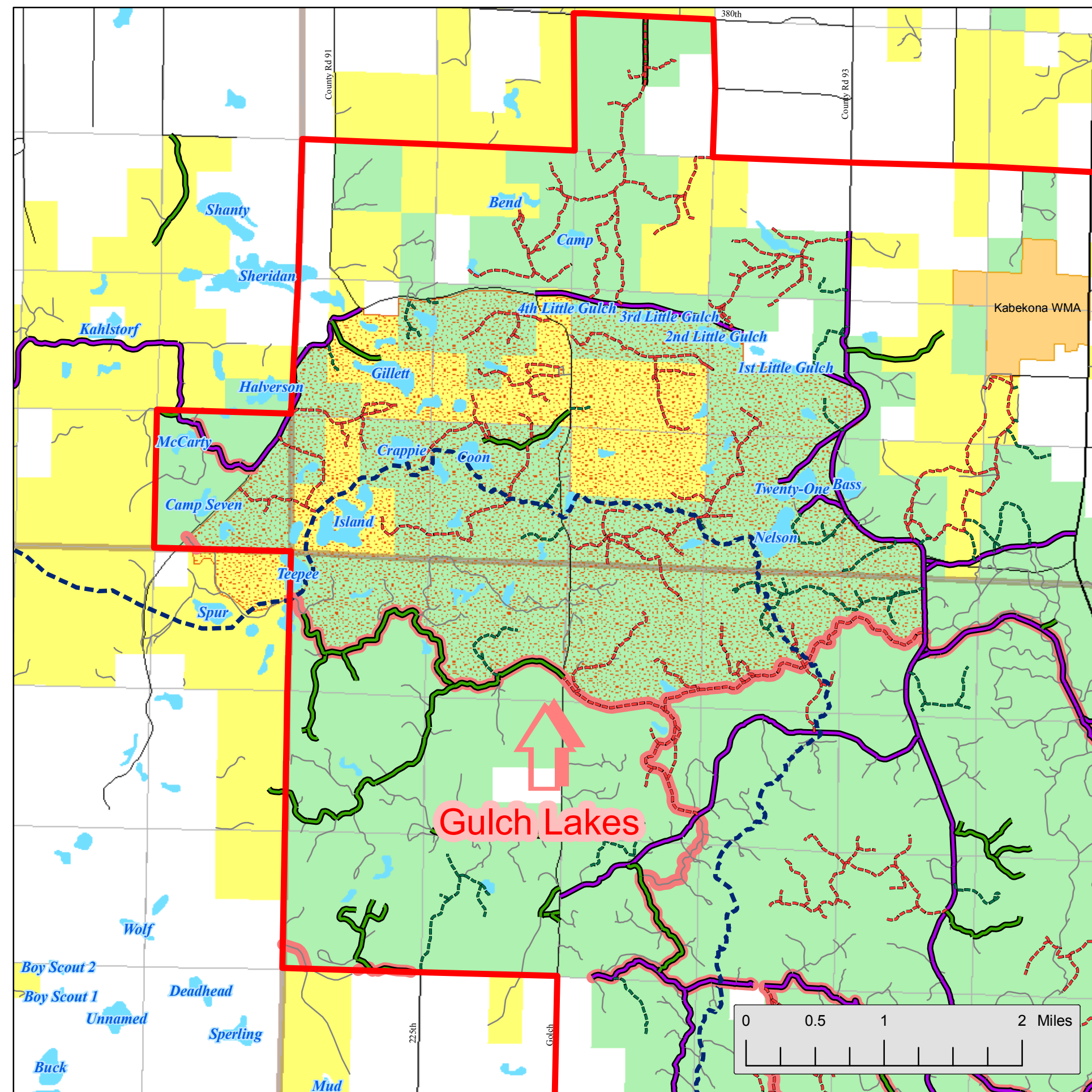
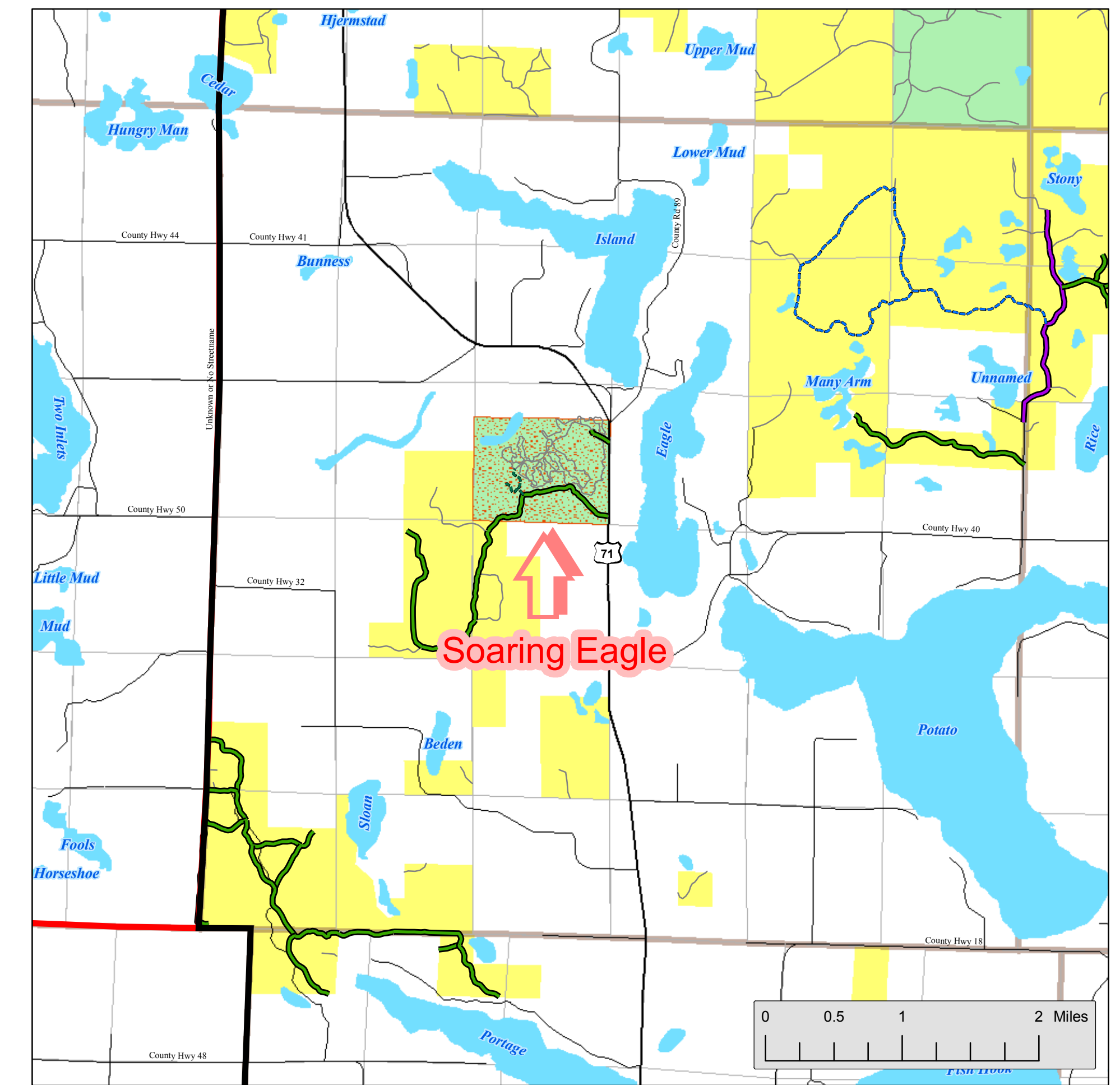
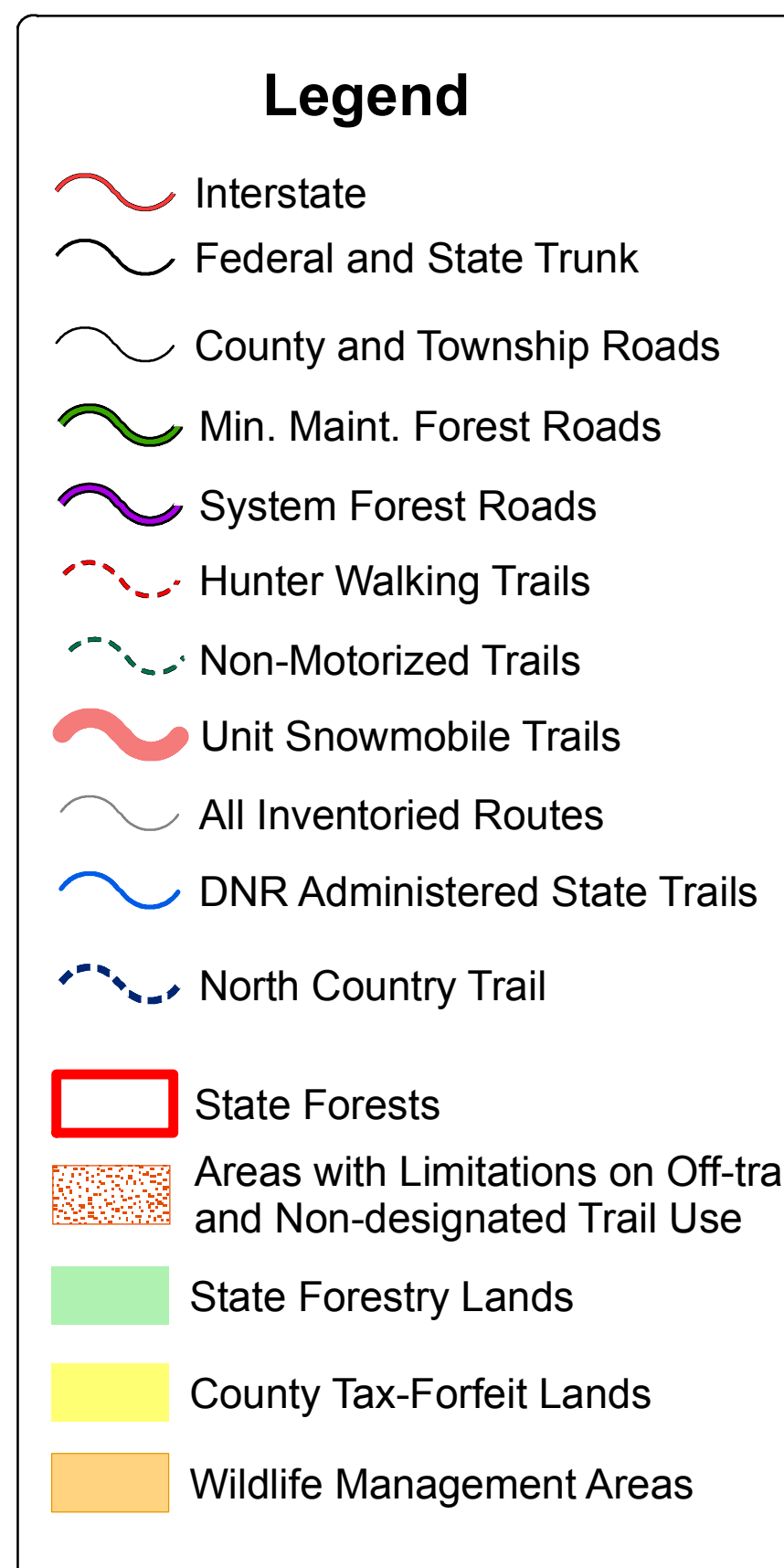
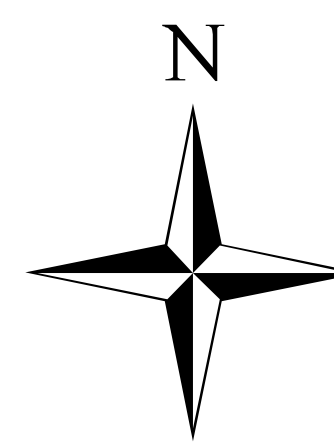
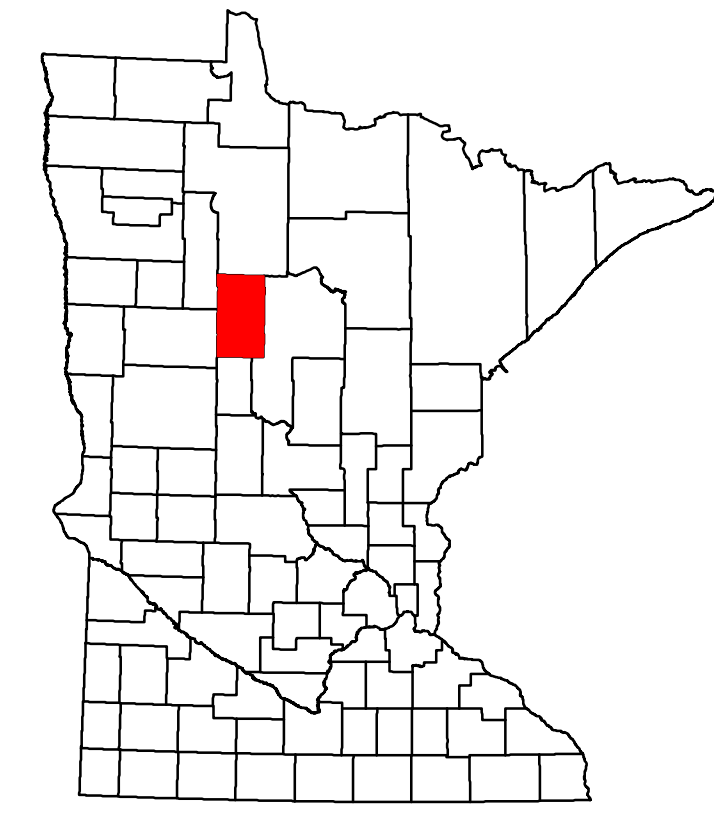
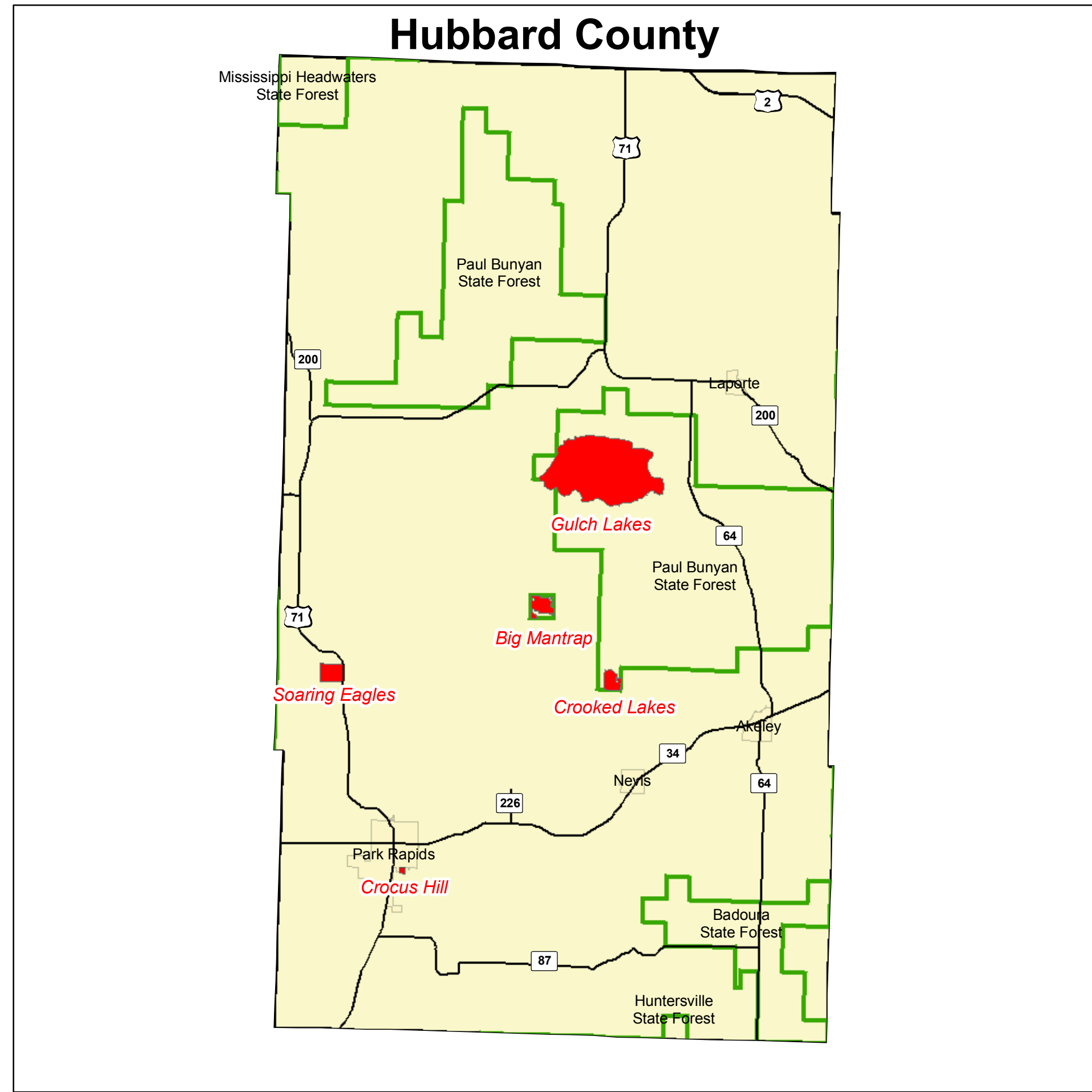


Map Copyright, 2007
Minnesota Department of Natural Resources
Division of Trails and Waterways
20070002

Hubbard County

Forest Road and Trail Designation Plan

Detail of Areas with Limitations on Off-trail and Non-designated Trail Use (as per MS 84.926, Subd5.)



Map Copyright, 2007
Minnesota Department of Natural Resources
Division of Trails and Waterways
20070302

Disclaimer:
The Minnesota Department of Natural Resources makes no representation or warranties, express or implied, with respect to the reuse of data provided herewith, regardless of its format or the means of its transmission. There is no guarantee or representation to the user as to the accuracy, currency, suitability, or reliability of this data for any purpose. The user accepts the data 'as is', and assumes all risks associated with its use. By accepting this data, the user agrees not to transmit this data or provide access to it or any part of it to another party unless the user shall include with the data a copy of this disclaimer.

The Minnesota Department of Natural Resources assumes no responsibility for actual or consequential damage incurred as a result of any user's reliance on this data.

Public Ownership information on this map comes from a variety of sources and every effort was made to define these areas as accurately as possible. Please refer to posted signs on the ground for exact locations.

Equal Opportunity to participate in and benefit from programs of the Minnesota Department of Natural Resources is available to all individuals regardless of race, color, creed, or religion, national origin, sex, marital status, status with regard to public assistance, sexual orientation, age, or disability. Discrimination inquiries should be sent to the Minnesota Department of Natural Resources, 500 Lafayette Road, St. Paul, MN 55155-4031; or the Equal Opportunity Office, Department of the Interior, Washington, D.C. 20240.