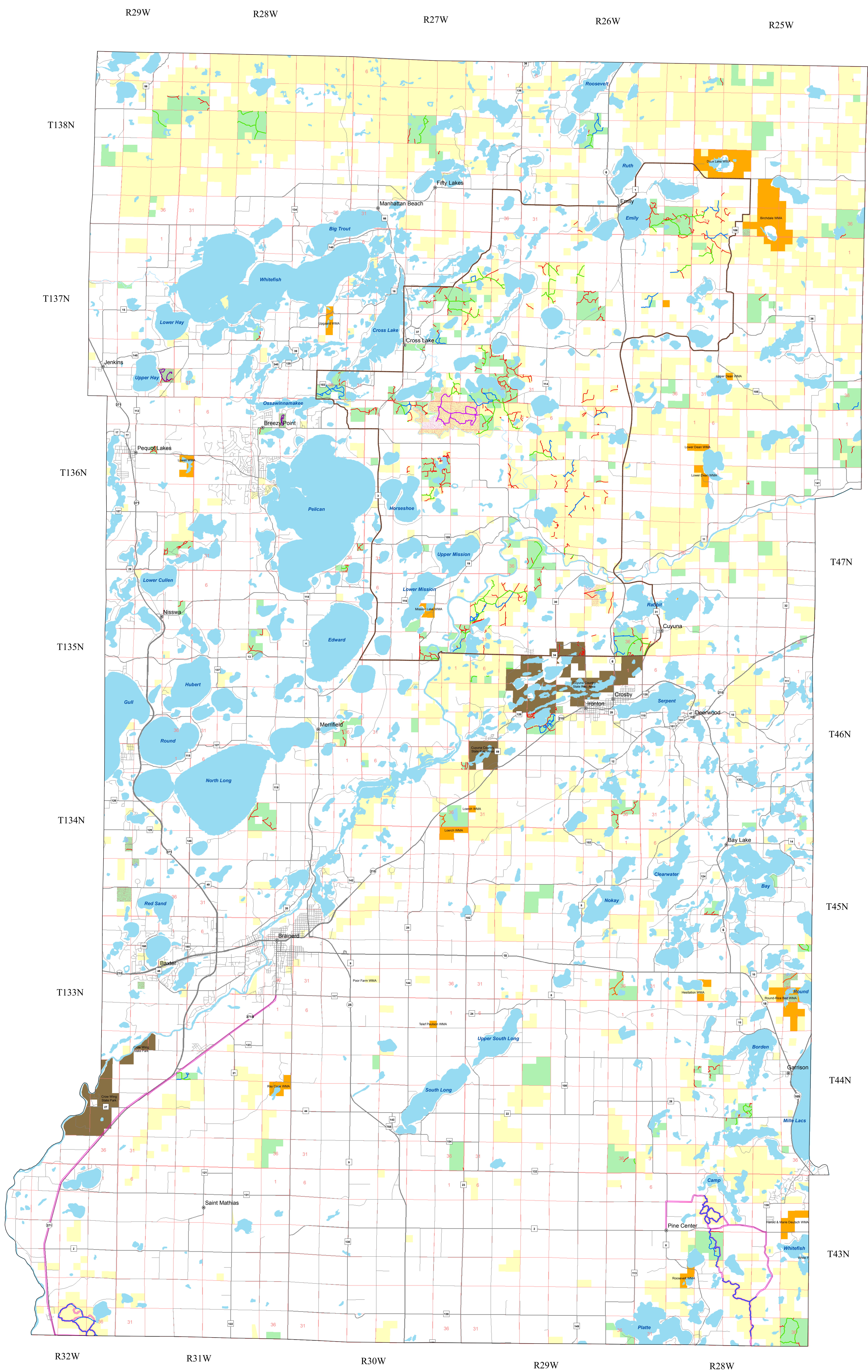
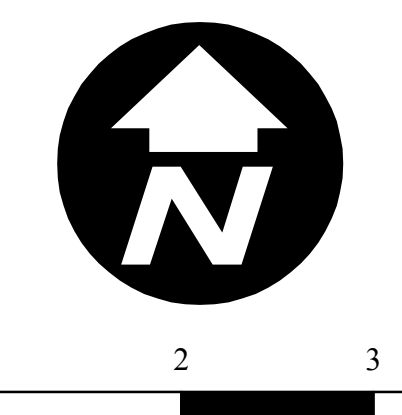


# Forest Road and Trail Designation - Crow Wing County



## Map Legend

- Areas Closed to Motor Vehicle Use
- Expanded Work Area
- Public Highways
- Forest Road
- ATV / OHM Trail
- Existing GIA ATV Trail
- Hunter Walking Trail
- Hiking Trail
- Scrub Oak Non-motorized Trail
- Non-designated Routes
- Lake, Pond, Stream, River
- PLS Townships
- PLS Sections
- State Forest Land
- State Wildlife Mgt. Land
- State Park Land
- County Tax-forfeited Land
- Populated Places



0 1 2 3 4 5 6  
Miles

Map Copyright 2008  
Minnesota Department of Natural Resources

ATV: All-Terrain Vehicle, includes Class 1 and Class 2  
 HLV: Highway Licensed Vehicle  
 OHM: Off-Highway Motorcycle  
 ORV: Off-Road Vehicle  
 ORV: Off-Highway Vehicle, a generic term that includes ORV, ATV, and OHM, but not HLV.

**Forest Roads**  
 \*Provide access for resource management activities and public use.  
 \*Are not considered "public highways" and the resource agencies are not "road authorities."  
 \*Are typically open to use by both highway-licensed vehicles (HLV) and off-highway vehicles (OHV).  
 \*Are classified as "System" or "Minimum Maintenance" depending on condition and intended use.

**System Forest Roads**  
 \*May be gravelled or native soil surfaced.  
 \*Maintained and graded to allow use by low clearance highway licensed vehicles.  
 \*Signed with road name at major intersections.

**Minimum Maintenance Forest Roads**  
 \*Typically narrow and native soil surfaced.  
 \*Caution is recommended when traveling, low-clearance highway vehicles may not be suited for use on these roads.  
 \*Will be signed "Road may be impassible. Travel at your own risk."

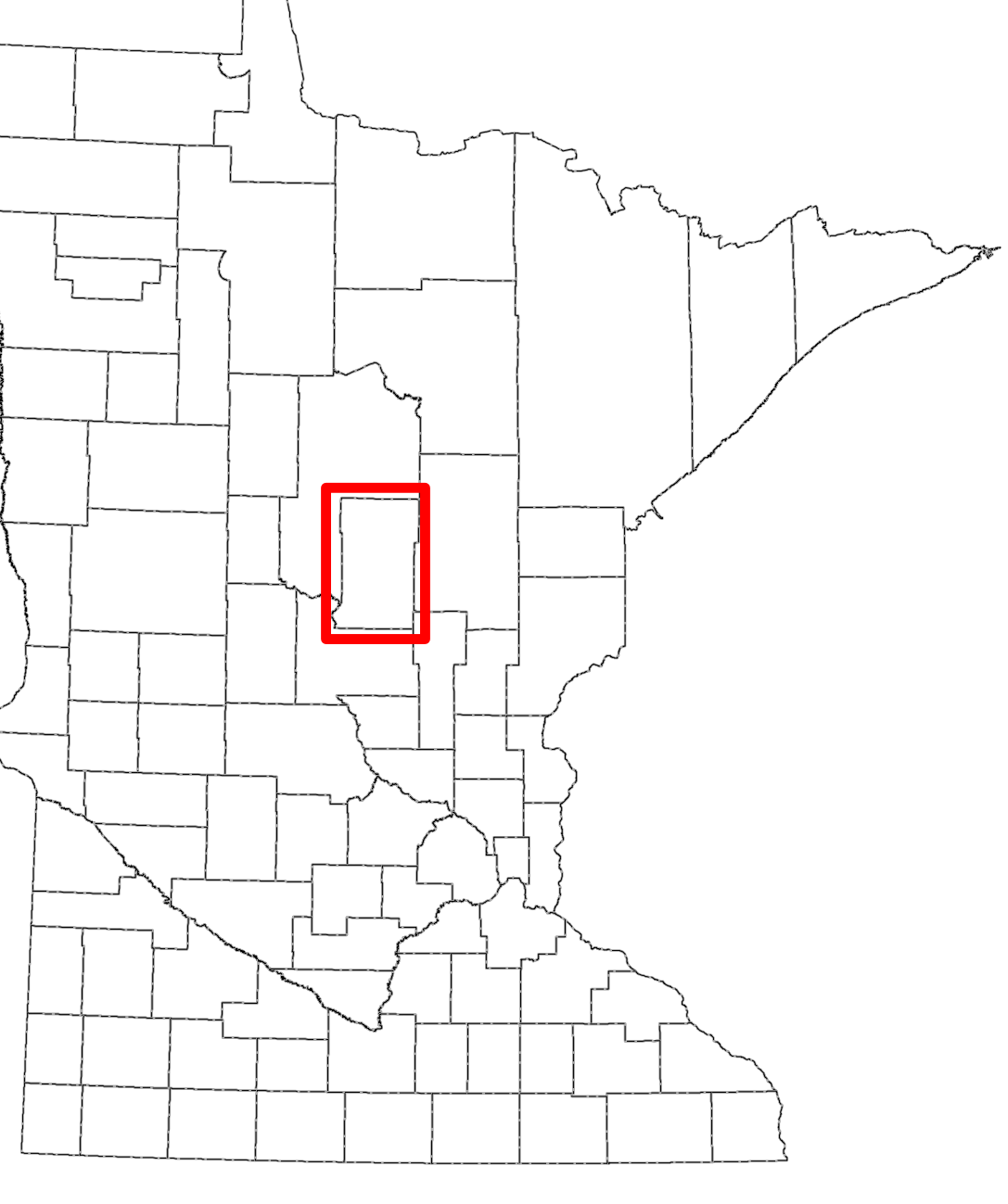
**Recreational Trails**  
 \*Trails are signed, mapped, and maintained for designated recreational uses.

**ATV and OHM Trails**  
 \*Trails that are signed, mapped, and maintained for use by ATVs and OHMs.  
 \*Use by HLVs and ORVs is prohibited.

**Hunter Walking Trails**  
 \*Maintained primarily for use by hunters on foot.  
 \*Use by motor vehicles and horses is prohibited.

**Hiking and other Non-motorized Trails**  
 \*Trails signed and managed primarily for hiking and other compatible non-motorized uses.  
 \*Use by motor vehicles is prohibited.

**Non-designated Routes**  
 \*Routes that are neither a forest road nor a recreational trail.  
 \*Not signed or maintained for public use.  
 \*Available for non-motorized use in an "as is" condition, with the user responsible for ensuring that there is no damage to the route.  
 \*Non-designated routes on forest lands classified as "limited" are available for motor vehicle use under the big game hunting and trapping exceptions allowed by MN Statutes 84.926.  
 \*Non-designated routes on forest lands classified as "closed" are not available for motor vehicle use under the big game hunting and trapping exceptions allowed by MN Statutes 84.926.  
 \*It is illegal to operate a vehicle on these routes in a manner that causes erosion, rutting, or damage to trees or crops (MN Rules 6100.0160 Subpart 7A).  
 \*Width and route surface varies. All routes depicted may not be passable for all types of uses.



Equal Opportunity to participate in and benefit from programs of the Minnesota Department of Natural Resources is available to all individuals regardless of race, color, creed, or religion, national origin, sex, marital status, status with regard to public assistance, sexual orientation, age, or disability. Discrimination inquiries should be sent to the Minnesota Department of Natural Resources, 500 Lafayette Road St. Paul, MN 55155-4031, or the Equal Opportunity Office, Department of the Interior, Washington, D.C. 20240.

Disclaimer: The Minnesota Department of Natural Resources makes no representation or warranties, express or implied, with respect to the reuse of data provided herewith, regardless of its format or the means of its transmission. There is no guarantee or presentation to the user as to the accuracy, currency, suitability, or reliability of his data for any purpose. The user accepts the data as is, and assumes all risks associated with its use. By accepting this data, the user agrees not to transmit this data or provide access to it or any part of it to another party unless the user shall include with the data a copy of this disclaimer. The Minnesota Department of Natural Resources assumes no responsibility for actual or consequential damage incurred as a result of any user's reliance on this data. Public Ownership information on this map comes from a variety of sources and every effort was made to define these areas as accurately as possible.