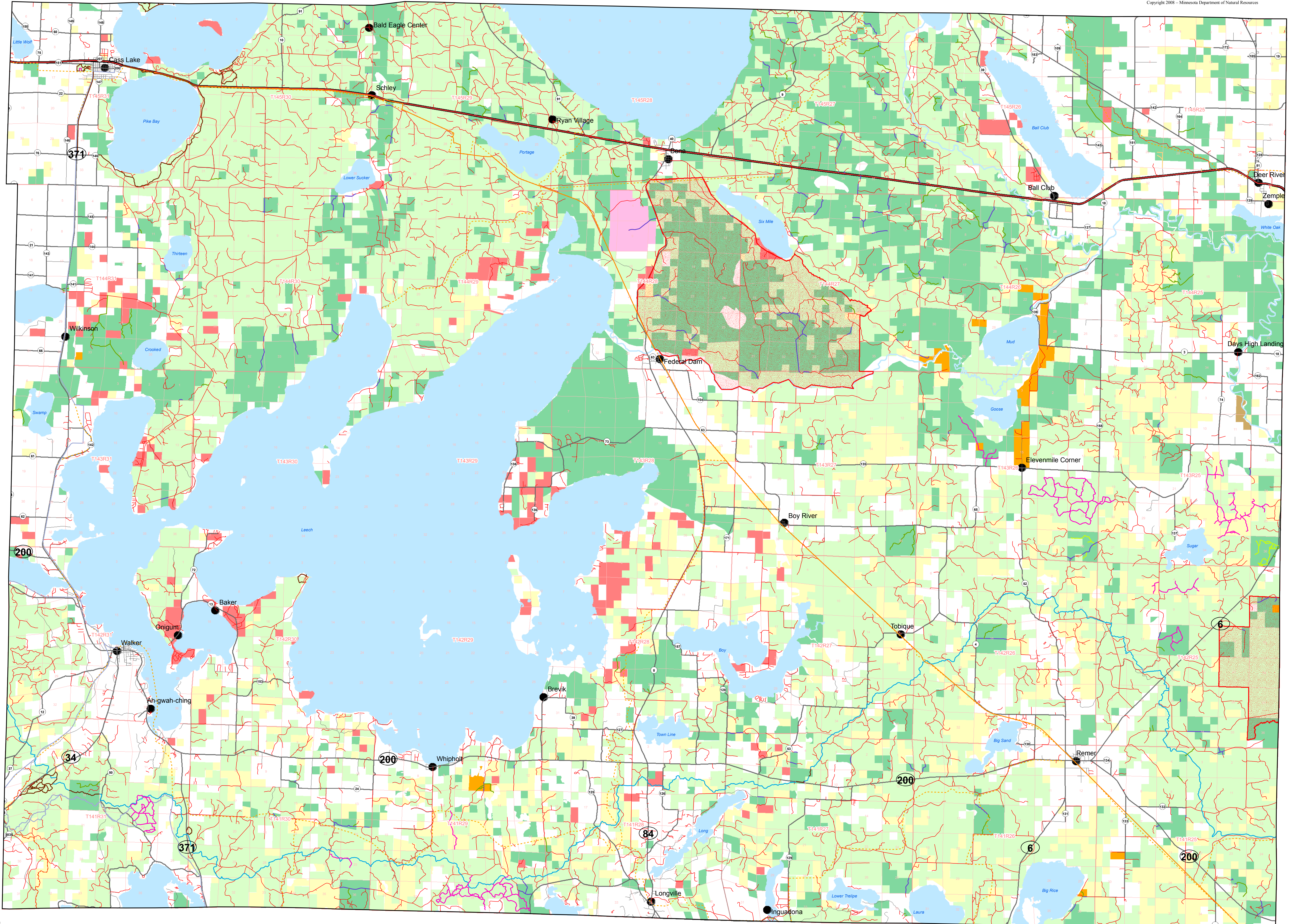


# Forest Road and Trail Designation South Chippewa Area

**Disclaimer:**  
The Minnesota Department of Natural Resources makes no representation or warranties, express or implied, with respect to the content of data provided herewith, regardless of its format or the means of its transmission. There is no guarantee or representation to the user as to the accuracy, currency, suitability, or reliability of this data for any purpose. The user accepts the data "as is," and assumes all risks associated with its use. By accepting this data, the user agrees not to transmit this data or provide access to it or any part of it to another party unless the user shall include with the data a copy of this disclaimer. The Minnesota Department of Natural Resources assumes no responsibility for actual or consequential damage incurred as a result of any user's reliance on this data. Public Ownership information on this map comes from a variety of sources and every effort was made to define these areas as accurately as possible.

**Equal Opportunity:**  
Equal opportunity to participate in and benefit from programs of the Minnesota Department of Natural Resources is available to all individuals regardless of race, color, creed, religion, national origin, sex, marital status, status with regard to public assistance, age, sexual orientation, or disability. Discrimination inquiries should be sent to MN DNR, 500 Lafayette Road, St. Paul, MN 55155-4031, or the Equal Opportunity Office, Department of the Interior, Washington, DC 20240.

Copyright 2008 - Minnesota Department of Natural Resources



**Motor Vehicle Access:**  
ATV - All Terrain Vehicle, includes Class 1 and Class 2  
BHV - Highway Limited Vehicle  
OHV - Off-Highway Motorcycle  
OHV - Off-Highway Vehicle  
OHV - Off-Highway Vehicle, a generic term that includes OHV, ATV, and OHV, but not BHV.

**State Forest Roads:**  
Provides access for resource management activities and public use.  
Access controlled trails (hiking, hunting, and OHV) are "road alternatives."  
Access controlled trails (hiking, hunting, and OHV) are "road alternatives."  
Access controlled trails (hiking, hunting, and OHV) are "road alternatives."  
Access controlled trails (hiking, hunting, and OHV) are "road alternatives."

**System State Forest Roads:**  
Motor vehicle use is prohibited.  
Motor vehicle use is prohibited.  
Motor vehicle use is prohibited.  
Motor vehicle use is prohibited.

**Minimum Maintenance State Forest Roads:**  
Motor vehicle use is prohibited.  
Motor vehicle use is prohibited.  
Motor vehicle use is prohibited.  
Motor vehicle use is prohibited.

**Non-Designated Roads on State Forest Lands:**  
Roads managed by the US Forest Service but located on State Forest land.  
Roads managed by the US Forest Service but located on State Forest land.  
Roads managed by the US Forest Service but located on State Forest land.  
Roads managed by the US Forest Service but located on State Forest land.

**Recreational Trails:**  
Trails are signed, mapped, and maintained for recreational use.  
Trails are signed, mapped, and maintained for recreational use.  
Trails are signed, mapped, and maintained for recreational use.  
Trails are signed, mapped, and maintained for recreational use.

**Hunter Walking Trails:**  
Motor vehicle use is prohibited.  
Motor vehicle use is prohibited.  
Motor vehicle use is prohibited.  
Motor vehicle use is prohibited.

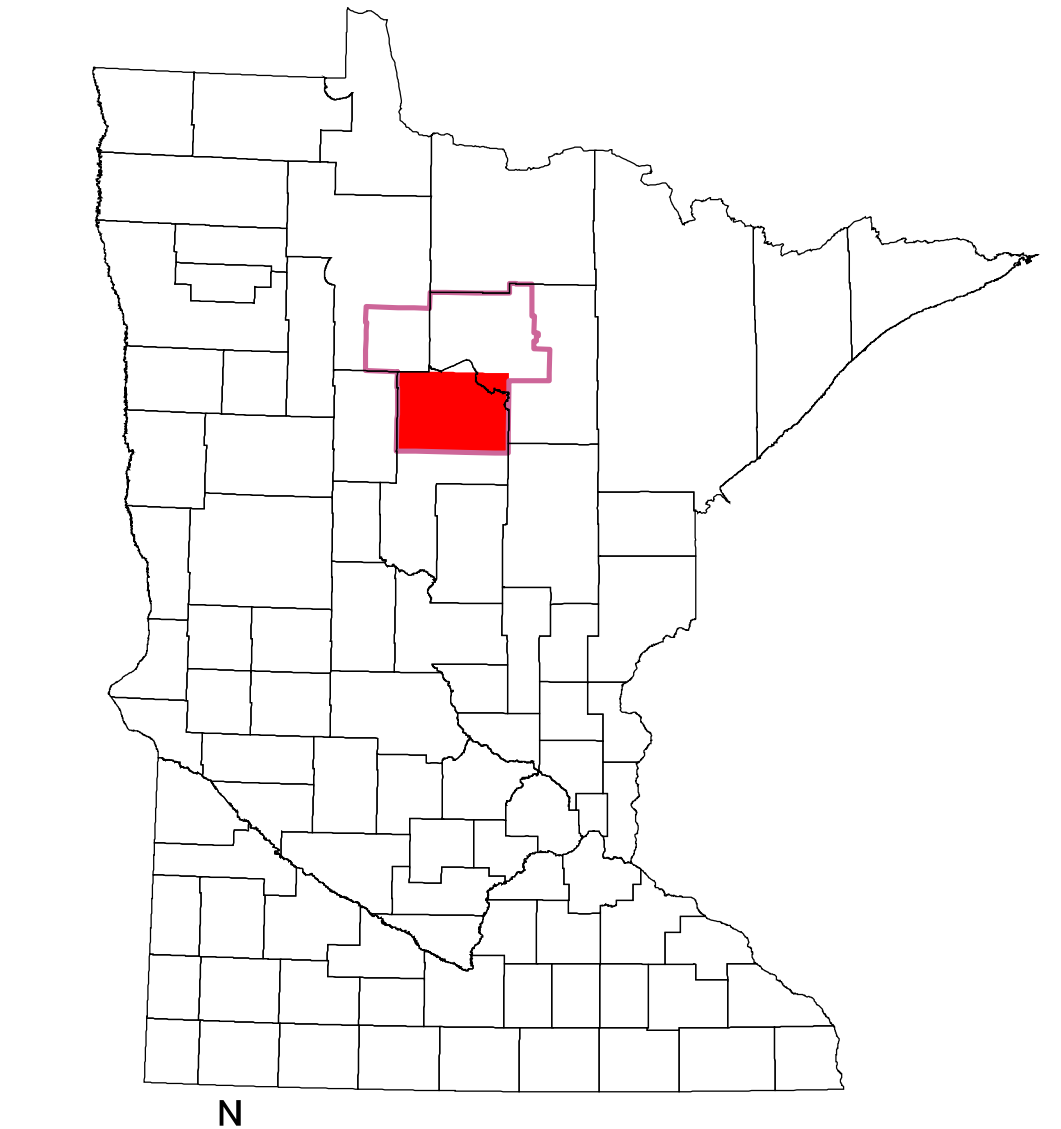
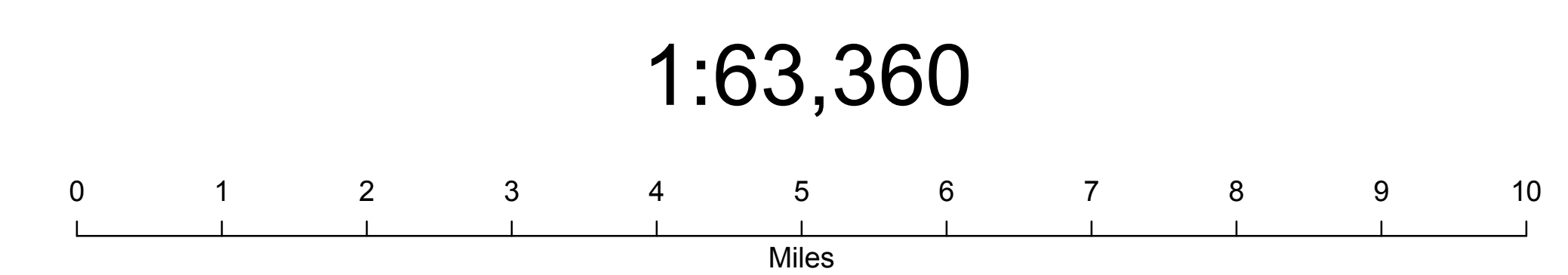
**Hiking, Biking, and other Non-motorized Trails:**  
Trails are signed, mapped, and maintained for recreational use.  
Trails are signed, mapped, and maintained for recreational use.  
Trails are signed, mapped, and maintained for recreational use.  
Trails are signed, mapped, and maintained for recreational use.

**Non-Designated Roads on State Forest Lands:**  
Roads managed by the US Forest Service but located on State Forest land.  
Roads managed by the US Forest Service but located on State Forest land.  
Roads managed by the US Forest Service but located on State Forest land.  
Roads managed by the US Forest Service but located on State Forest land.

- System State Forest Road
  - Min. Maint. State Forest Road
  - National Forest Road on State Forest Land
  - ATV/OHV Trail
  - Hunter Walking Trail
  - Hiking or Biking Trail
  - Access Route
  - Other Routes (non-designated)
- (Motor vehicle uses determined by US Forest Service)*
- (Routes that will be signed as closed to all motor vehicle use)*
- (Non-designated routes on lands classified as 'managed' with respect to motor vehicle use)*
- (Non-designated routes on 'closed' or 'limited' state forest land and routes not on state forest land)*

- North Country Trail
- Heartland & Paul Bunyan State Trails
- Soo Line North Trail
- Snowmobile Trail (approx. location)
- US Highway 2
- Public Highway
- Major River
- Populated Places

- PLS Townships
- PLS Sections
- Large Lakes (500+ acres)
- Chippewa National Forest Lands
- State Forest Lands
- County Tax-forfeited Lands
- State Wildlife Mgt. Area Lands
- State Park Lands
- State SNA Lands
- Leech Lake Band Lands
- Areas with Limitations (No hunting exception)



Jack Olson  
30MAY2008