

Forest Road and Trail Designation NE Chippewa Area

- Motor Vehicle Acronyms**
- ATV: All-Terrain Vehicle, includes Class 1 and Class 2
 - HLV: Highway-Licensed Vehicle
 - OHM: Off-Highway Motorcycle
 - ORV: Off-Road Vehicle
 - OHV: Off-Highway Vehicle, a generic term that includes ORV, ATV, and OHM, but not HLV.

- State Forest Roads**
- Provide access for resource management activities and public use.
 - Are not considered "public highways," and the DNR is not a "road authority."
 - Are typically open to use by both highway-licensed vehicles (HLV) and off-highway vehicles (OHV).
 - Are classified as "System" or "Minimum Maintenance" depending on condition and intended use.

- System State Forest Roads**
- May be gravelled or native soil surfaced.
 - Maintained and graded to allow use by low clearance highway licensed vehicles.
 - Signed with road name at major intersections.

- Minimum Maintenance State Forest Roads**
- Typically narrow and native soil surfaced.
 - Caution is recommended when traveling, low-clearance highway vehicles may not be suited for use on these roads.
 - Will be signed "Road may be impassible. Travel at your own risk."

- National Forest Roads on State Forest Lands**
- Roads managed by the US Forest Service but located on State Forest land.
 - Conditions vary widely.
 - Higher standard roads typically open to HLV use only. Medium standard roads typically open to HLVs and OHVs. Lower standard roads often closed to motor vehicle use.
 - See the Motor Vehicle Use Map on the Chippewa National Forest website for allowed uses on specific roads.

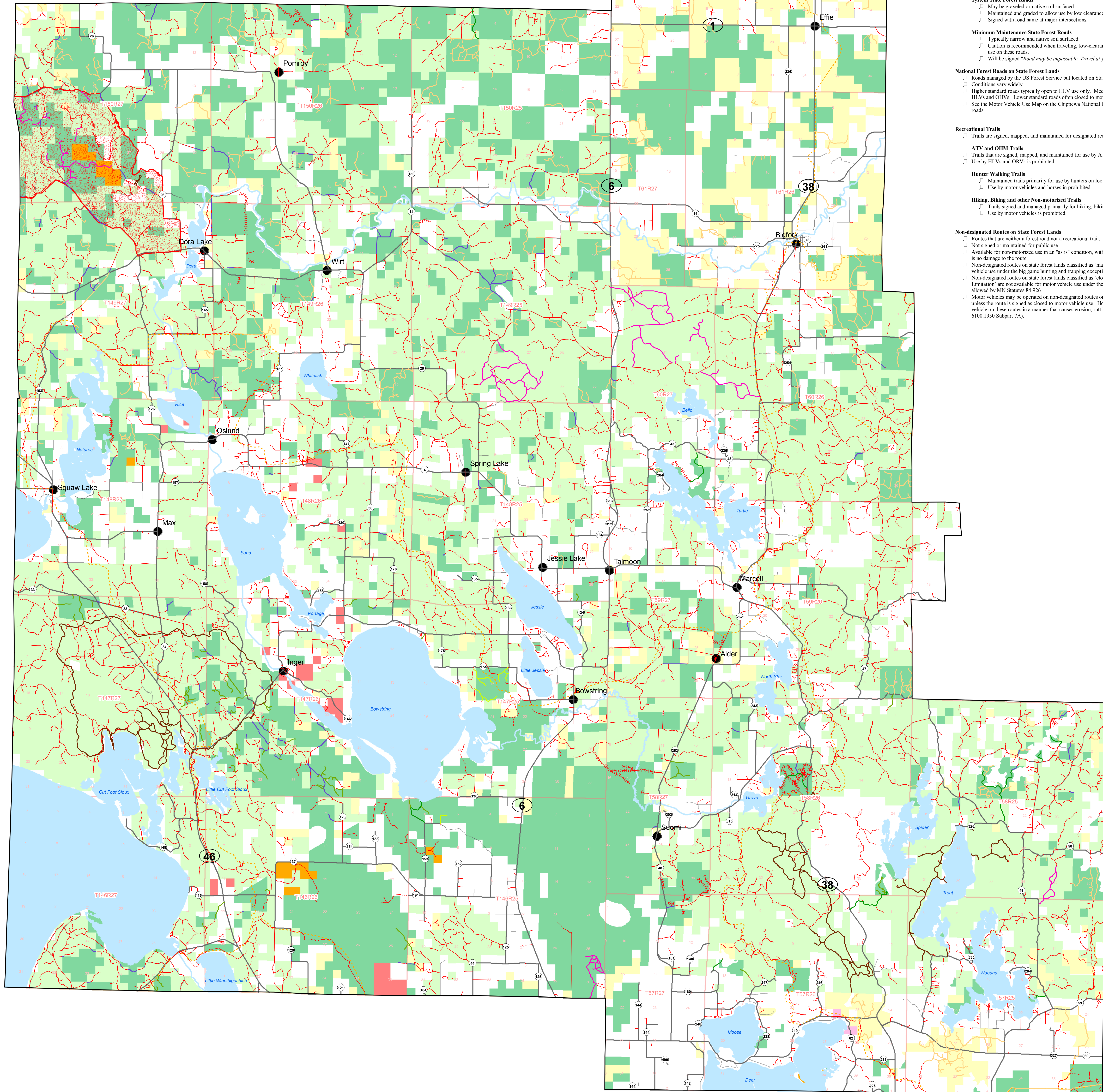
- Recreational Trails**
- Trails are signed, mapped, and maintained for designated recreational uses.

- ATV and OHM Trails**
- Trails that are signed, mapped, and maintained for use by ATVs and OHMs.
 - Use by HLVs and ORVs is prohibited.

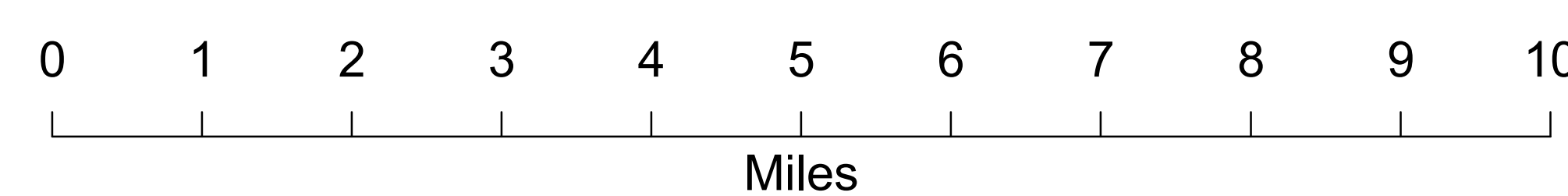
- Hunter Walking Trails**
- Maintained trails primarily for use by hunters on foot.
 - Use by motor vehicles and horses is prohibited.

- Hiking, Biking and other Non-motorized Trails**
- Trails signed and managed primarily for hiking, biking or other compatible non-motorized uses.
 - Use by motor vehicles is prohibited.

- Non-designated Routes on State Forest Lands**
- Routes that are neither a forest road nor a recreational trail.
 - Not signed or maintained for public use.
 - Available for non-motorized use in an "as is" condition, with the user responsible for ensuring that there is no damage to the route.
 - Non-designated routes on state forest lands classified as "managed" or "limited" are available for motor vehicle use under the big game hunting and trapping exceptions allowed by MN Statutes 84.926.
 - Non-designated routes on state forest lands classified as "closed" or designated as an "Area with Limitation" are not available for motor vehicle use under the big game hunting and trapping exceptions allowed by MN Statutes 84.926.
 - Motor vehicles may be operated on non-designated routes on state forest lands classified as "managed" unless the route is signed as closed to motor vehicle use. However, it is illegal to operate a motor vehicle on these routes in a manner that causes erosion, rutting, or damage to trees or crops (MN Rules 6100.1930 Subpart 7A).



1:63,360



- | | | |
|---|---|--|
| <ul style="list-style-type: none"> System State Forest Road Min. Maint. State Forest Road National Forest Road on State Forest Land ATV/OHM Trail Hunter Walking Trail Hiking or Biking Trail Proactive Closure Access Route Other Routes (non-designated) | <ul style="list-style-type: none"> North Country Trail Heartland & Paul Bunyan State Trails Soo Line North Trail Snowmobile Trail (approx. location) US Highway 2 Public Highway Major River Populated Places | <ul style="list-style-type: none"> PLS Townships PLS Sections Large Lakes (500+ acres) Chippewa National Forest Lands State Forest Lands County Tax-forfeited Lands State Wildlife Mgt. Area Lands State Park Lands State SNA Lands Leech Lake Band Lands Areas with Limitations (No hunting exception) |
|---|---|--|
- (Motor vehicle uses determined by US Forest Service)*
- (Routes that will be signed as closed to all motor vehicle use)*
- (Non-designated routes on lands classified as "managed" with respect to motor vehicle use)*
- (Non-designated routes on "closed" or "limited" state forest land and routes not on state forest land)*

Disclaimer:
The Minnesota Department of Natural Resources makes no representation or warranties, express or implied, with respect to the reuse of data provided hereunder, regardless of its format or the means of its transmission. There is no guarantee or representation to the user as to the accuracy, currency, suitability, or reliability of this data for any purpose. The user accepts the data "as is", and assumes all risks associated with its use. By accepting this data, the user agrees not to transmit this data or provide access to it or any part of it to another party unless the user shall include with the data a copy of this disclaimer. The Minnesota Department of Natural Resources assumes no responsibility for actual or consequential damage incurred as a result of any user's reliance on this data. Public Ownership information on this map comes from a variety of sources and every effort was made to define these areas as accurately as possible.

Equal Opportunity:
Equal opportunity to participate in and benefit from programs of the Minnesota Department of Natural Resources is available to all individuals regardless of race, color, creed, religion, national origin, sex, marital status, status with regard to public assistance, age, sexual orientation, or disability. Discrimination inquiries should be sent to MN DNR, 500 Lafayette Road, St. Paul, MN 55155-4031, or the Equal Opportunity Office, Department of the Interior, Washington, DC 20240.

