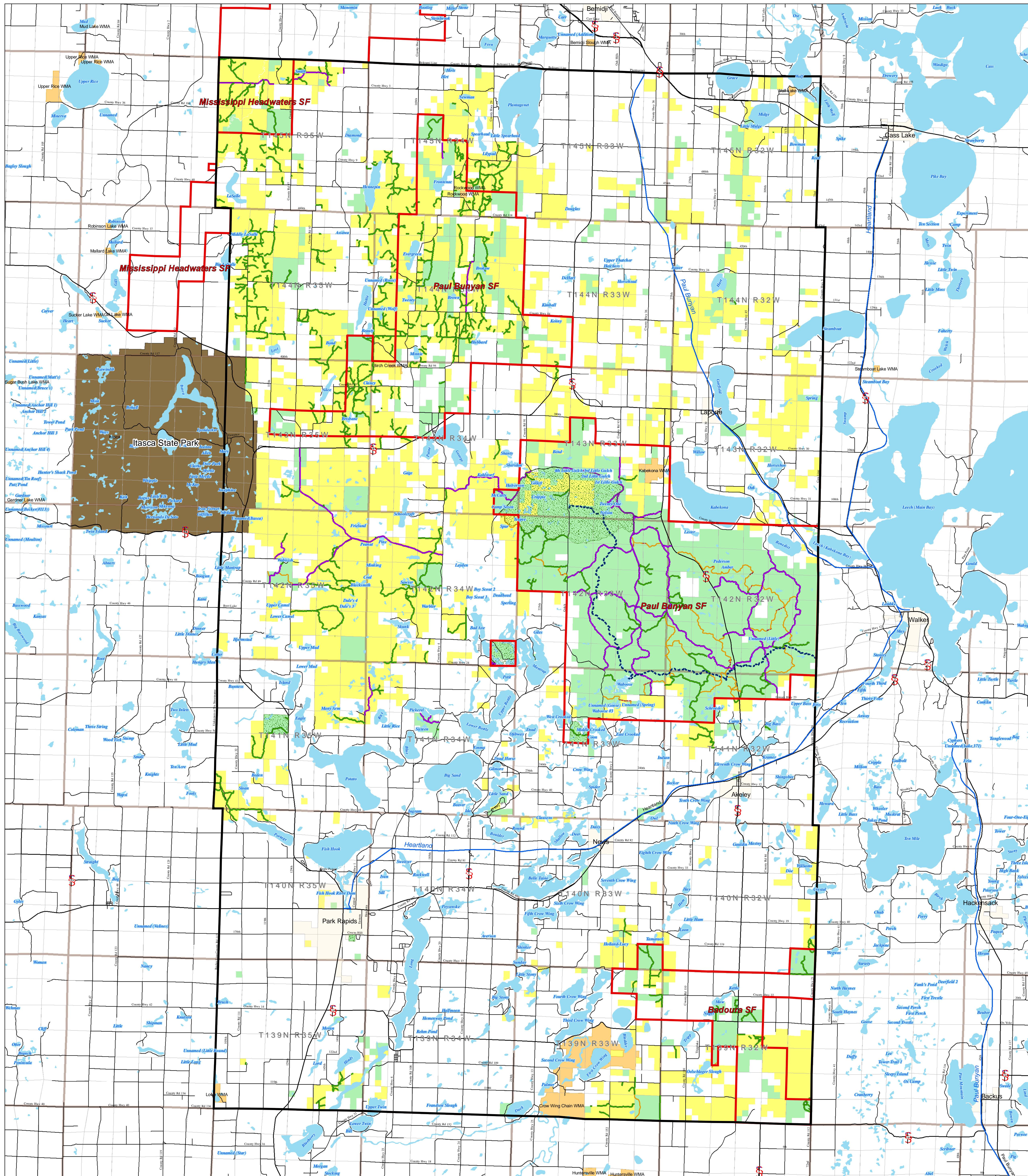
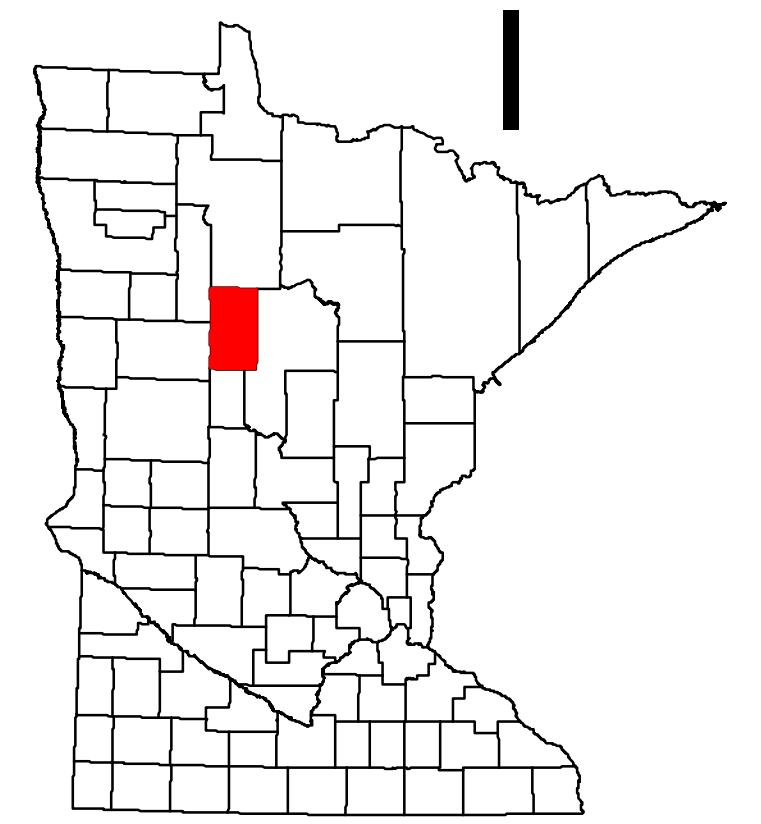


# Hubbard County

## Forest Road and Trail Designation Plan

### All Terrain Vehicle (ATV) Routes

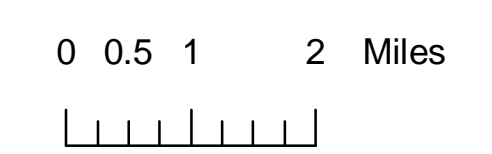


**Forest roads:** typically open to use by both highway-licensed vehicles and off-highway vehicles.  
**\*Forest roads on Hubbard County lands outside state forest boundaries are generally open to highway licensed vehicles only.**

**System Forest Roads:**  
 May be gravelled or native soil surfaced  
 Maintained and graded to allow use by highway vehicles including cars

**Forest Minimum Maintenance Roads:**  
 Are typically narrow and native soil surfaced  
 Caution is recommended when traveling, low clearance highway vehicles may not be suited for use on these roads

HLV: Highway-licensed Vehicles  
 OHV: Off-Highway Vehicles, includes ORV, ATV and OHM  
 ORV: Off-Road Vehicle  
 ATV: All-Terrain Vehicle  
 OHM: Off-Highway Motorcycle



#### Map Explanation

- System Forest Roads
- Minimum Maintenance Forest Roads
- ATV Trails
- Proposed New Construction
- North County Trail
- State, County and Township Roads
- State Forest Boundaries
- Proposed Non Motorized Areas
- County Lands
- State Forestry Lands
- Private and Other Public Lands

**Disclaimer:**  
 The Minnesota Department of Natural Resources makes no representation or warranties, express or implied, with respect to the reuse of data provided herewith, regardless of its format or the means of its transmission. There is no guarantee or representation to the user as to the accuracy, currency, suitability, or reliability of this data for any purpose. The user accepts the data 'as is', and assumes all risks associated with its use. By accepting this data, the user agrees not to transmit this data or provide access to it or any part of it to another party unless the user shall include with the data a copy of this disclaimer.

The Minnesota Department of Natural Resources assumes no responsibility for actual or consequential damage incurred as a result of any user's reliance on this data.

Public Ownership information on this map comes from a variety of sources and every effort was made to define these areas as accurately as possible. Please refer to posted signs on the ground for exact locations.



Map Copyright, January 2006  
 Minnesota Department of Natural Resources  
 Division of Trails and Waterways

Equal Opportunity to participate in and benefit from programs of the Minnesota Department of Natural Resources is available to all individuals regardless of race, color, creed, or religion, national origin, sex, marital status, status with regard to public assistance, sexual orientation, age, or disability. Discrimination inquiries should be sent to the Minnesota Department of Natural Resources, 500 Lafayette Road, St. Paul, MN 55155-4031; or the Equal Opportunity Office, Department of the Interior, Washington, D.C. 20240.