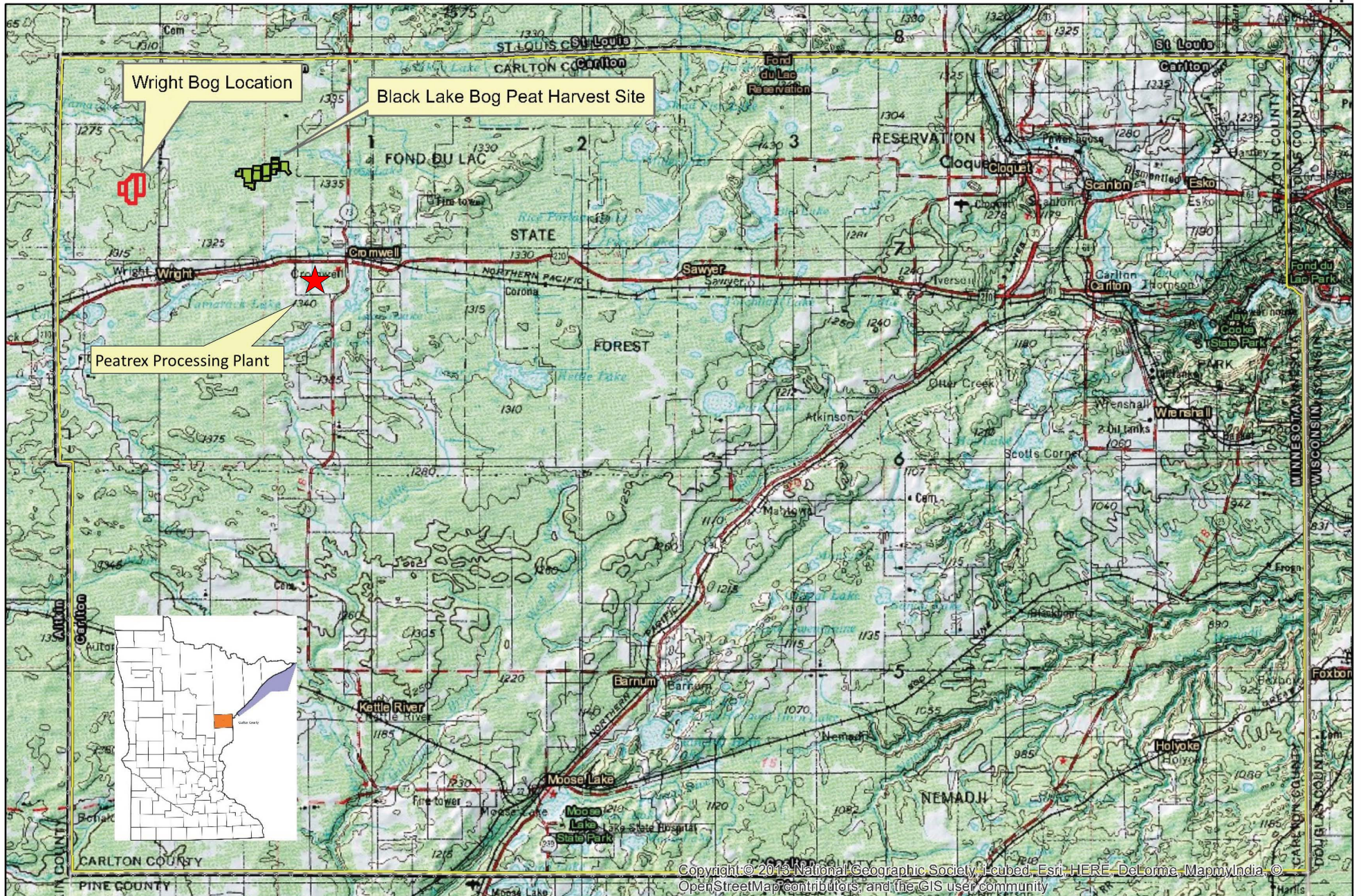


Figure 1: County Map



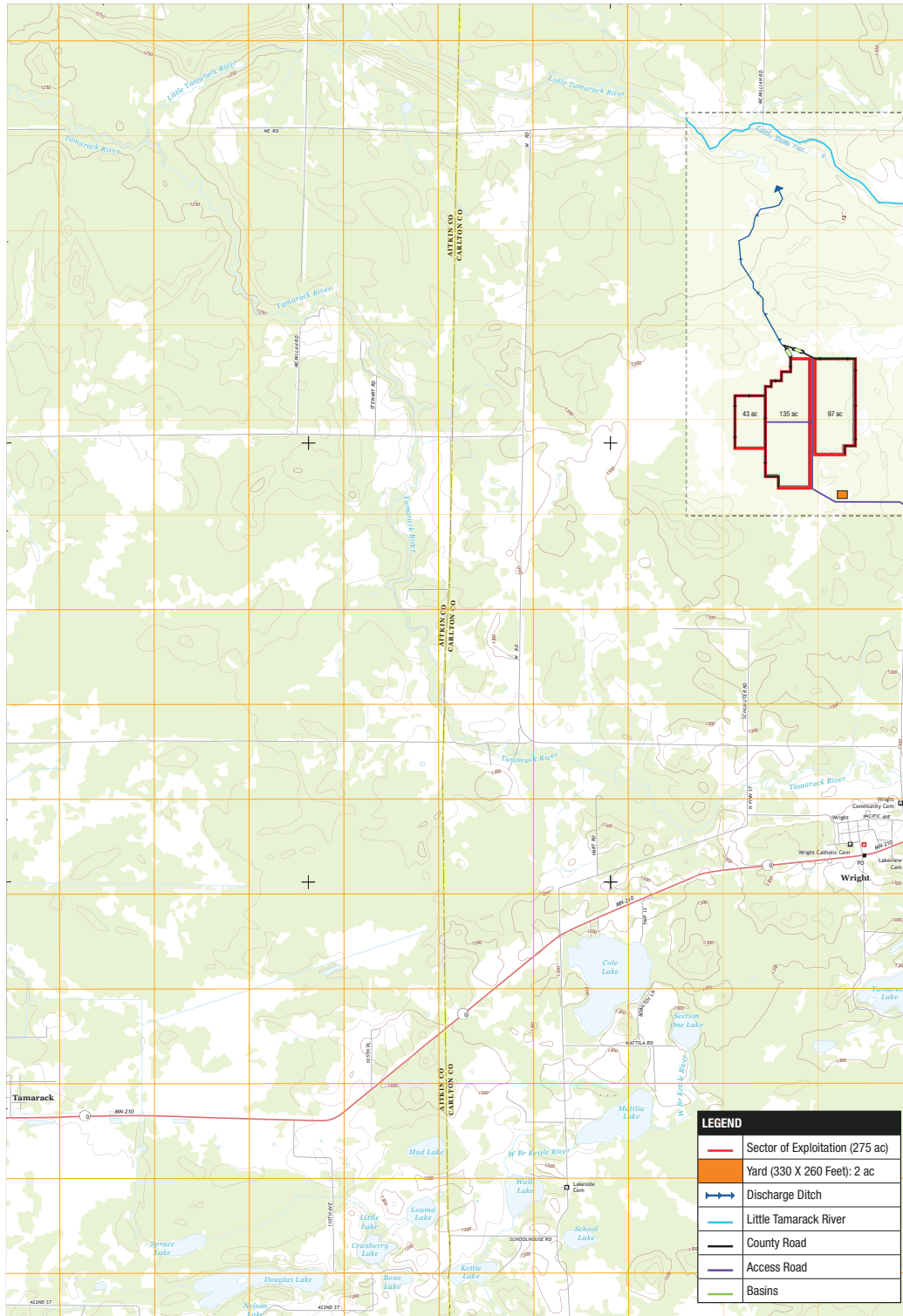
Copyright © 2013 National Geographic Society, iCubed, Esri, HERE, DeLorme, MapmyIndia, © OpenStreetMap contributors, and the GIS user community

**Legend**

Carlton County Limits



# Figure 2: USGS Topographic Map PREMIER HORTICULTURE WRIGHT BOG PROJECT



LEGEND	
	Sector of Exploitation (275 ac)
	Yard (330 X 260 Feet): 2 ac
	Discharge Ditch
	Little Tamarack River
	County Road
	Access Road
	Basins

Imagery: NADP, May 2010 - September 2010  
 Baseline: C2006-2012 True Color  
 Names: GNS, 2013  
 Photography: National Topographic Database, 2010  
 Contours: National Elevation Dataset, 1999  
 Boundaries: Census, IBC, BC, USGS, 1972-2012

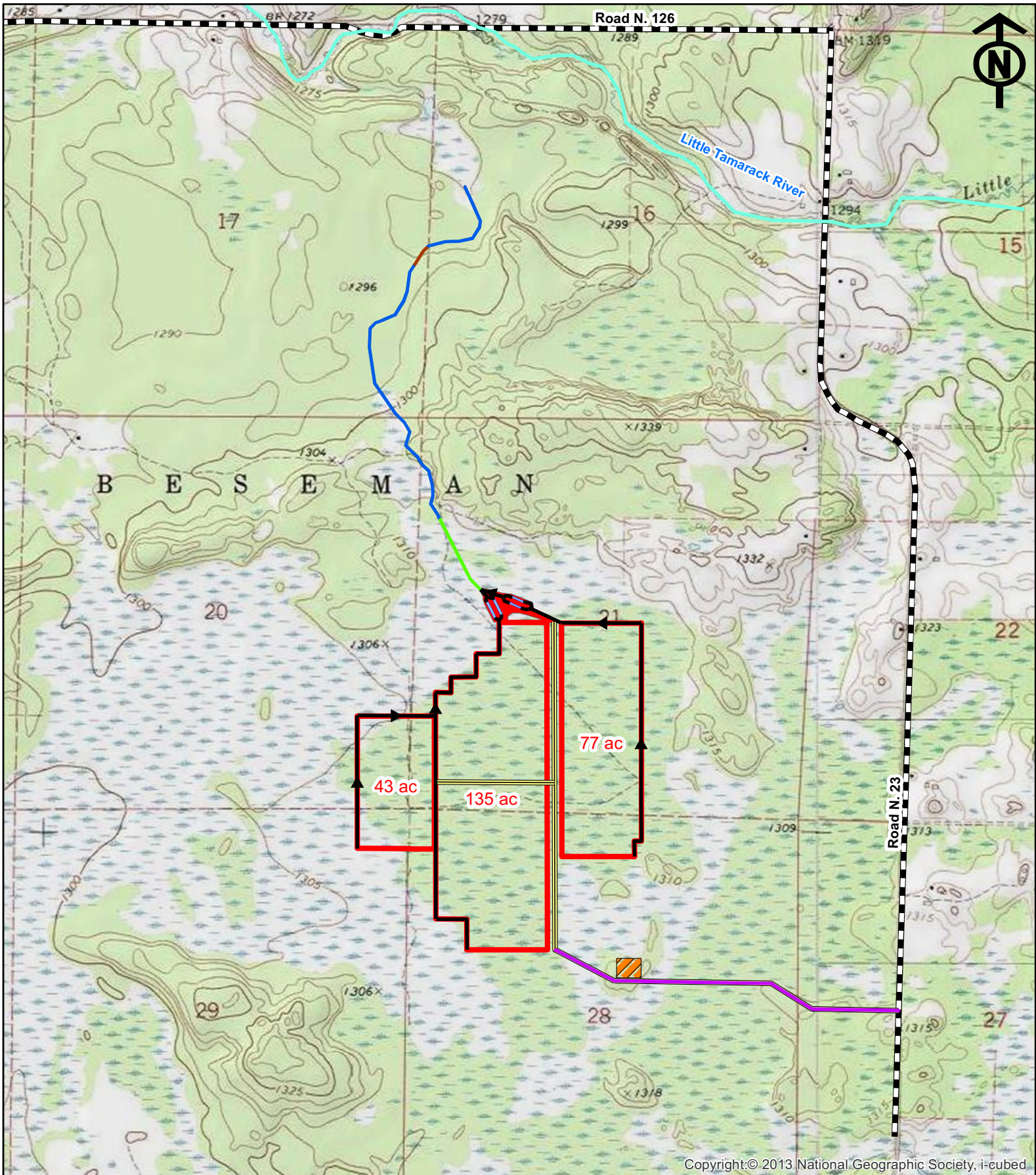
UTM GRID AND 2011 MAGNETIC NORTH DECLINATION AT CENTER OF SHEET	
U.S. National Grid	18S UTM in square M
NAD 83	18S
Grid Zone Designation	18S

CONTOUR INTERVAL 10 FEET  
 NORTH AMERICAN VERTICAL DATUM OF 1988  
 This map was produced to conform with the National Geospatial Program US Topographic Standard, 2011. A metadata file associated with this product is draft version 0.6.11

Basins	Little Tamarack River	Wright Bog
Tamarack	Wright Ave	Carlton
Lakes	Antonia	Wright Bog

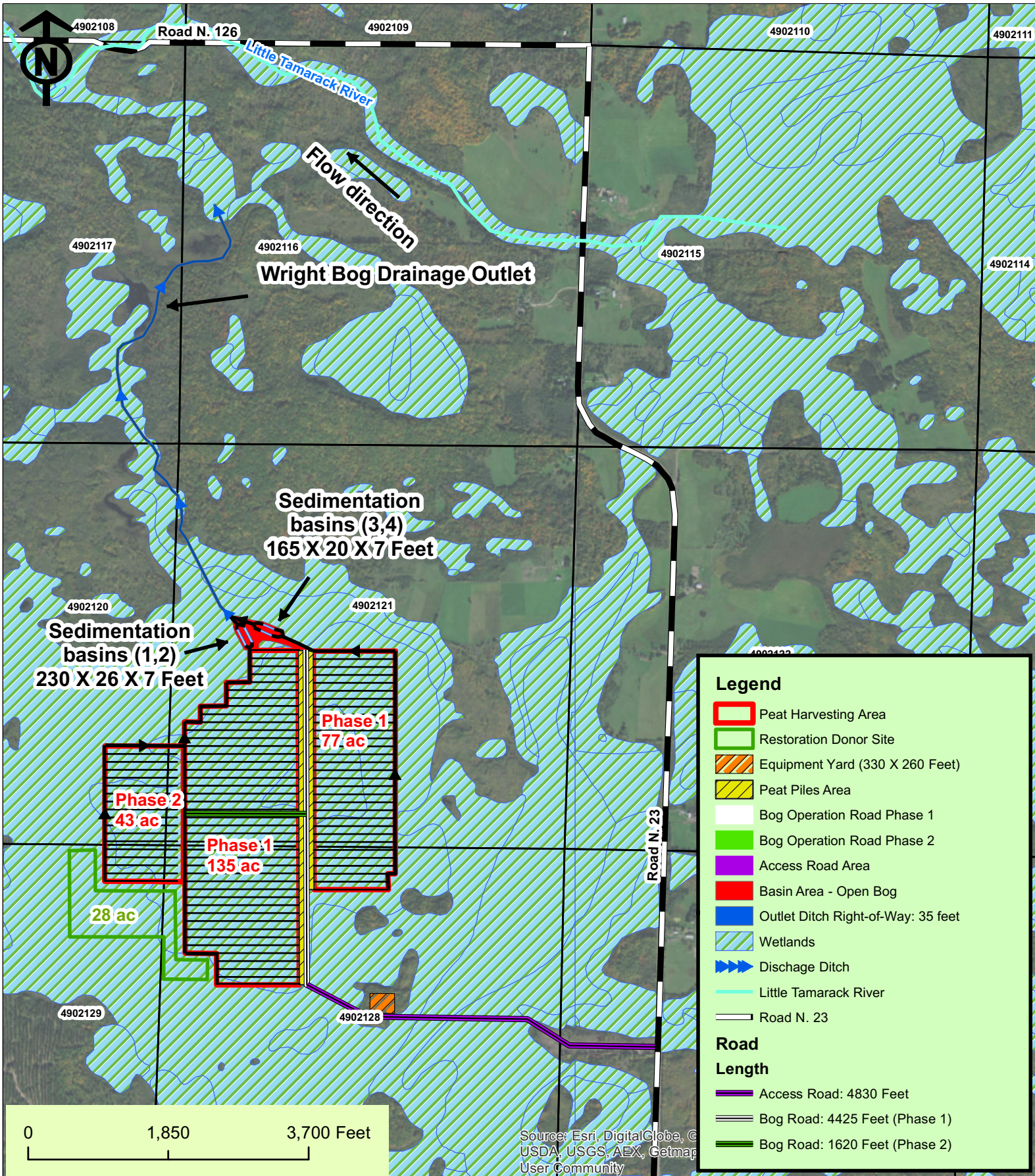
WRIGHT, MN  
2013

# Figure 2a: Local Topography



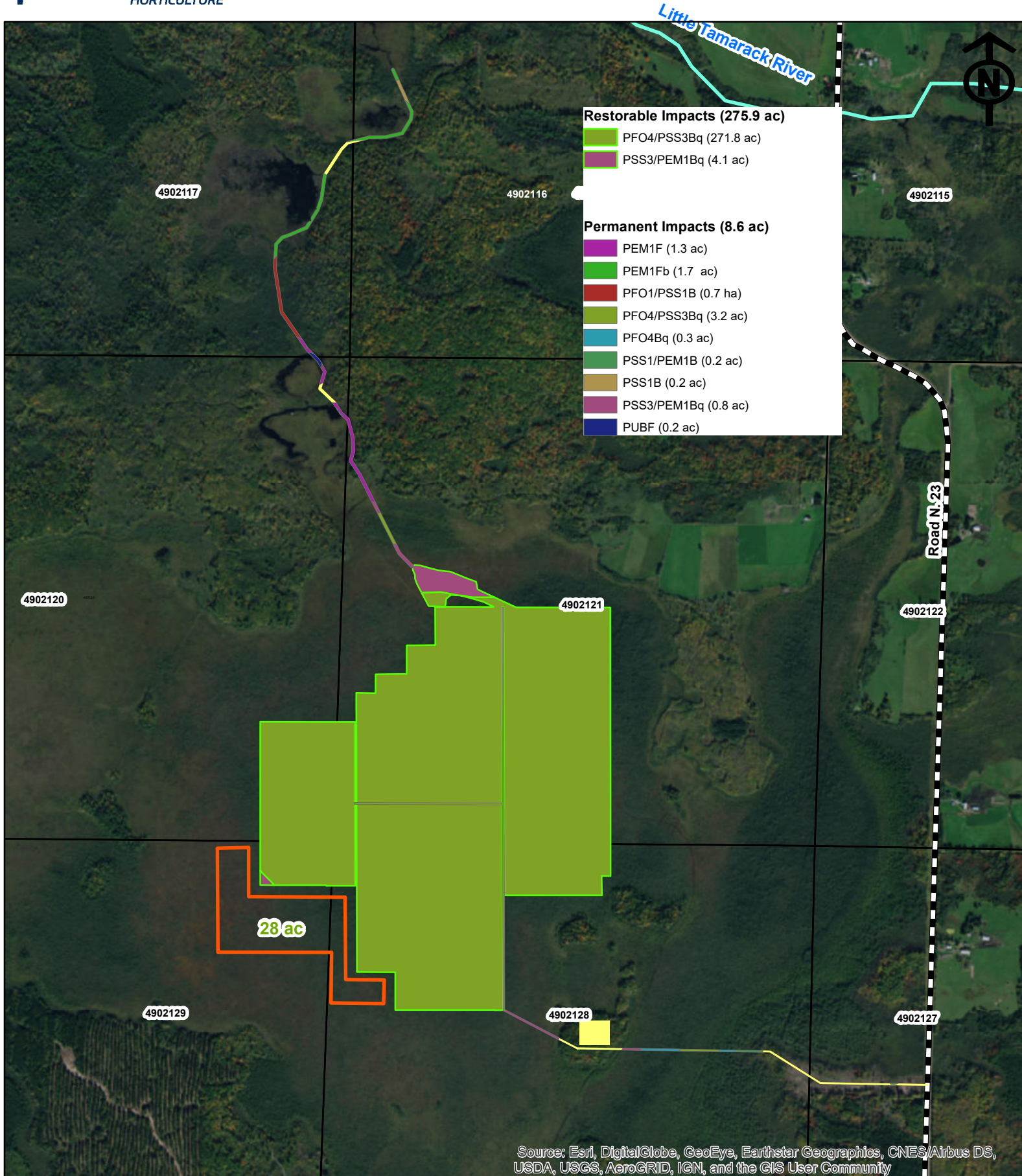
Copyright:© 2013 National Geographic Society, i-cubed

# Figure 3: Project Features and Wetland Resources

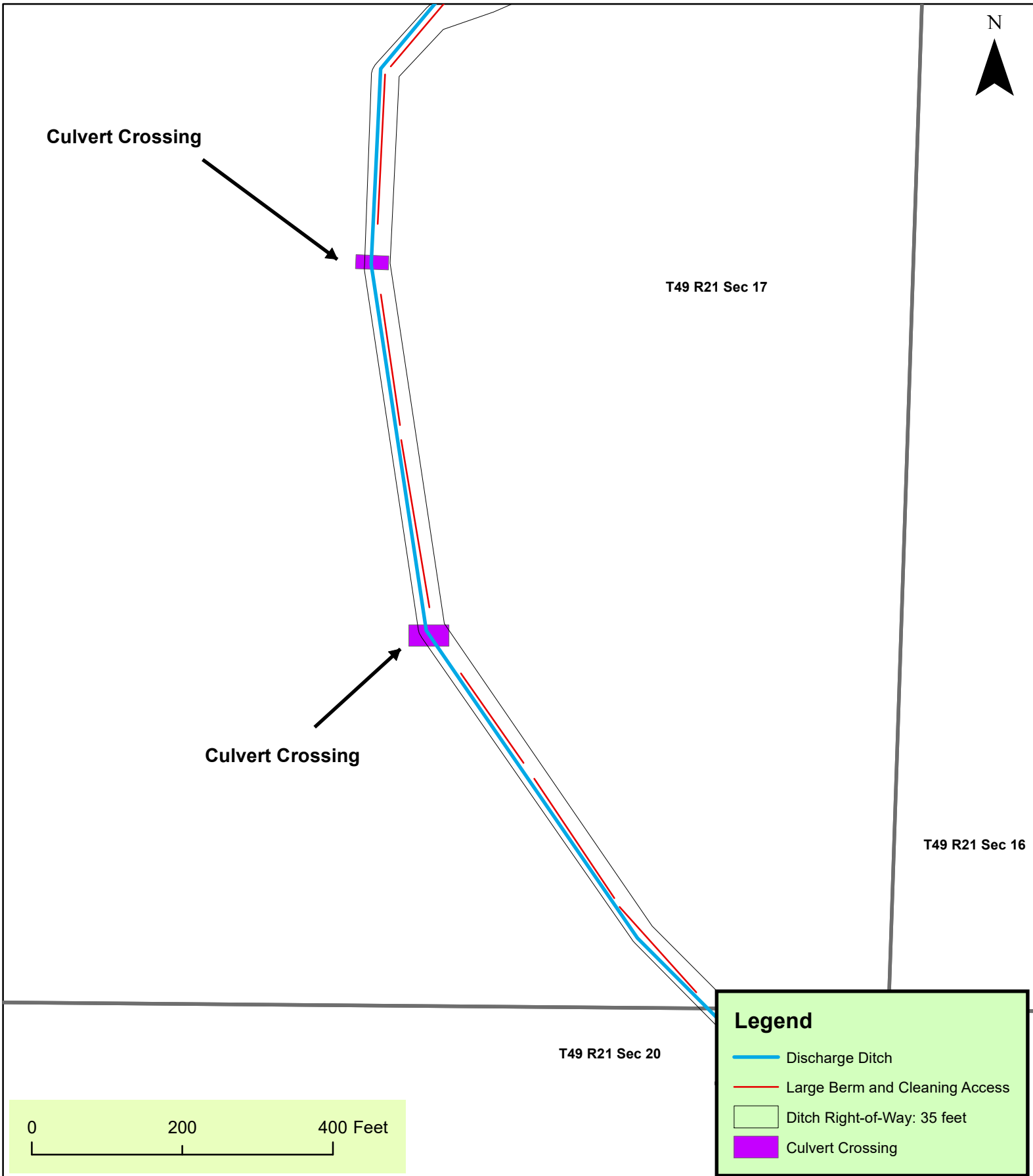




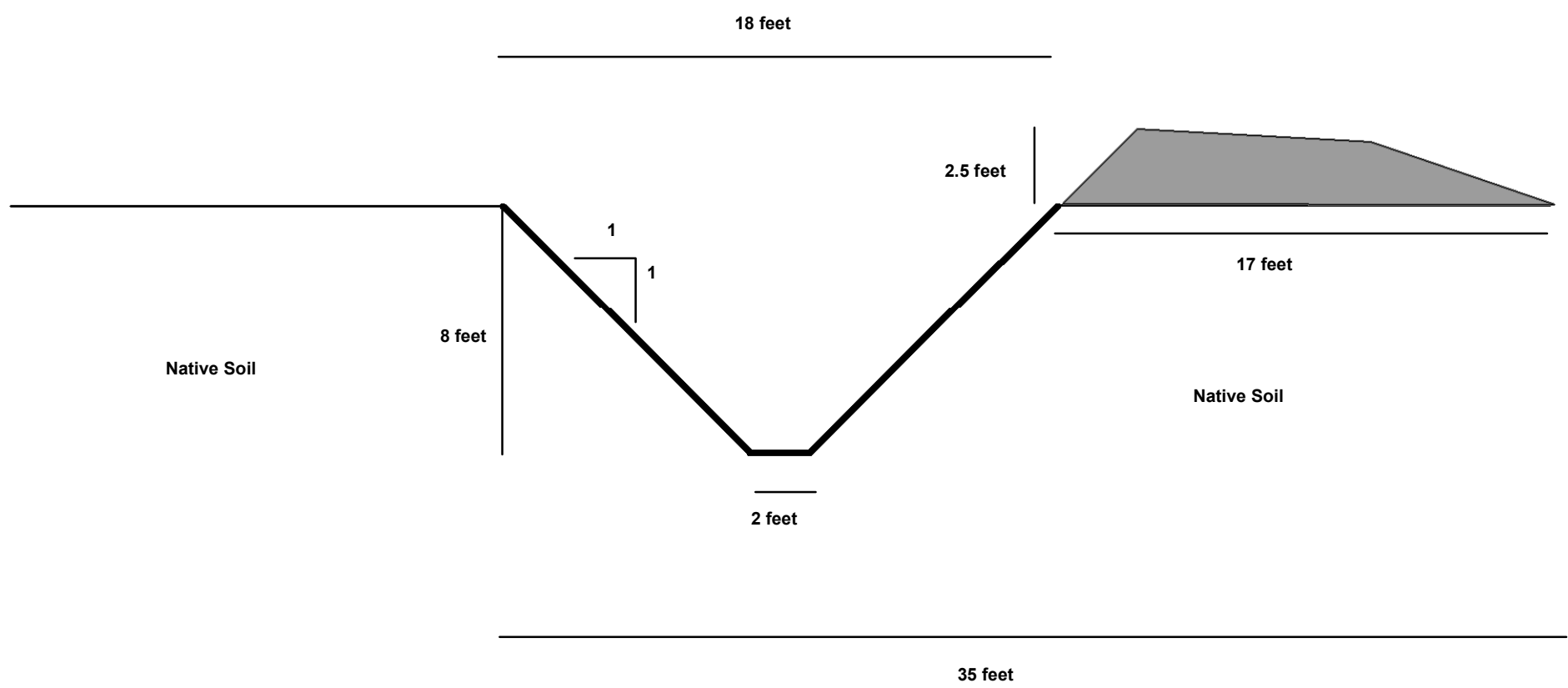
**Figure 4a: Permanent & Temporary Impacts on Wetland Plant Communities**



# Figure 4b: Culvert Crossing Details



# Figure 4c: Drainage Outlet - Cross Section View

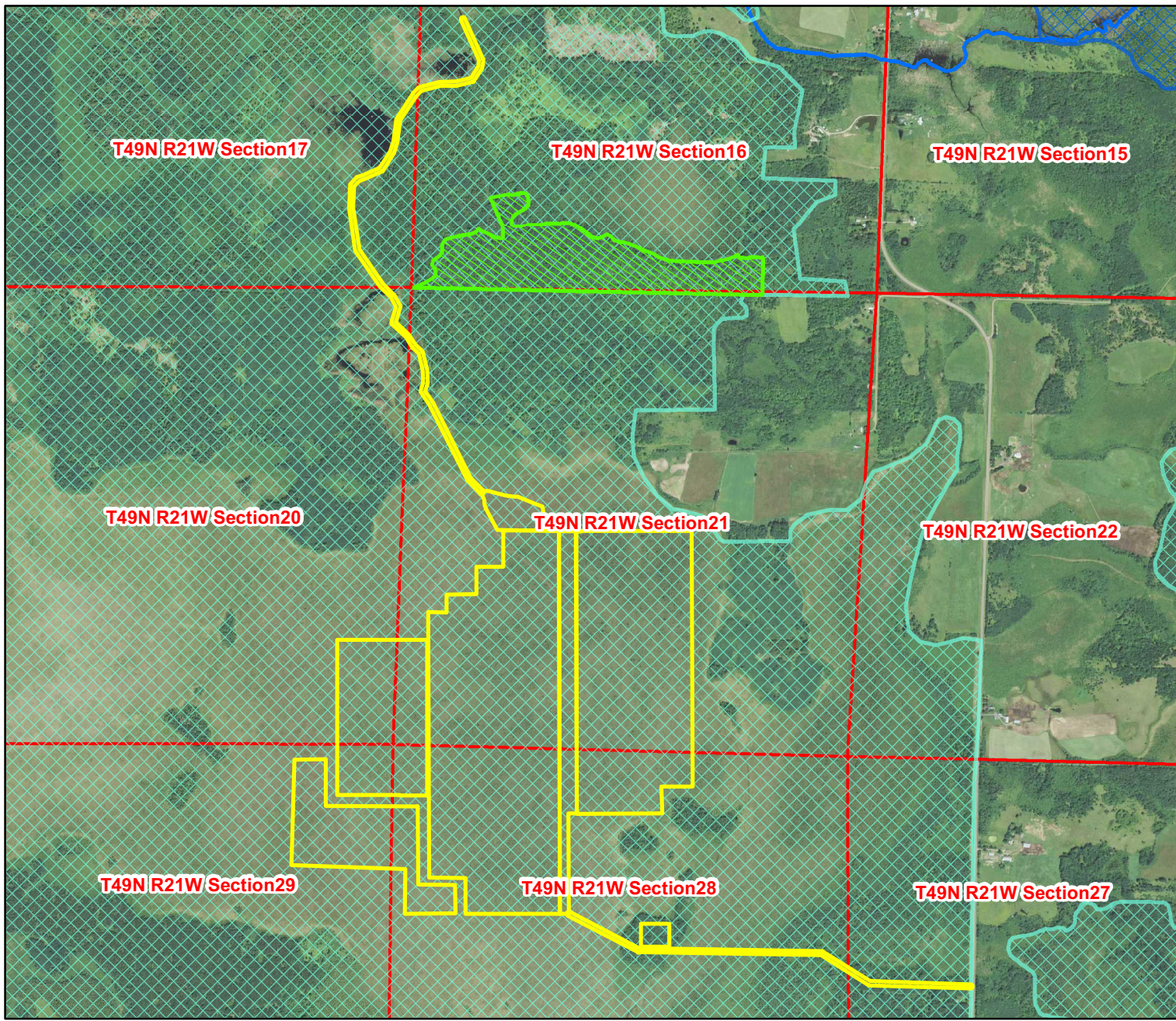




# Figure 5: MBS Sites of Biodiversity Significance & Designated Old Growth Forest

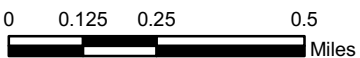
## Pre-Construction Site Plans

GIS shapefiles of MBS Sites of Biodiversity Significance and DNR Native Plant Communities can be downloaded from the MN Geospatial Commons at <https://gisdata.mn.gov/>.



**Legend**

- WrightBogOperationAreas\_2015\_09\_10
- Forest Stand Inventory - Old Growth**
  - Designated Old Growth
  - Designated Future Old Growth
  - Candidate Old Growth (Pending)
- MBS Sites of Biodiversity Significance**
  - Outstanding
  - High
  - Moderate
  - Below
  - Confluences and Flow Direction
  - PLS Section



Copyright 2015, State of Minnesota, DNR  
 Rare Feature, Prairie Railroad Survey, Native Plant Community, and Sites of Biodiversity Significance data are from the Natural Heritage Information System. The absence of rare features for a particular location should not be construed to mean that the DNR is confident rare features are absent from that location.

Figure 5a: MBS Sites of Biodiversity Significance at Wright Bog and Black Lake Bog

