

WEAVER BOTTOMS (POOL 5) AQUATIC HABITAT

ENHANCEMENT/RESTORATION PROJECT

ENVIRONMENTAL ASSESSMENT WORKSHEET FIGURES

Figure 1.

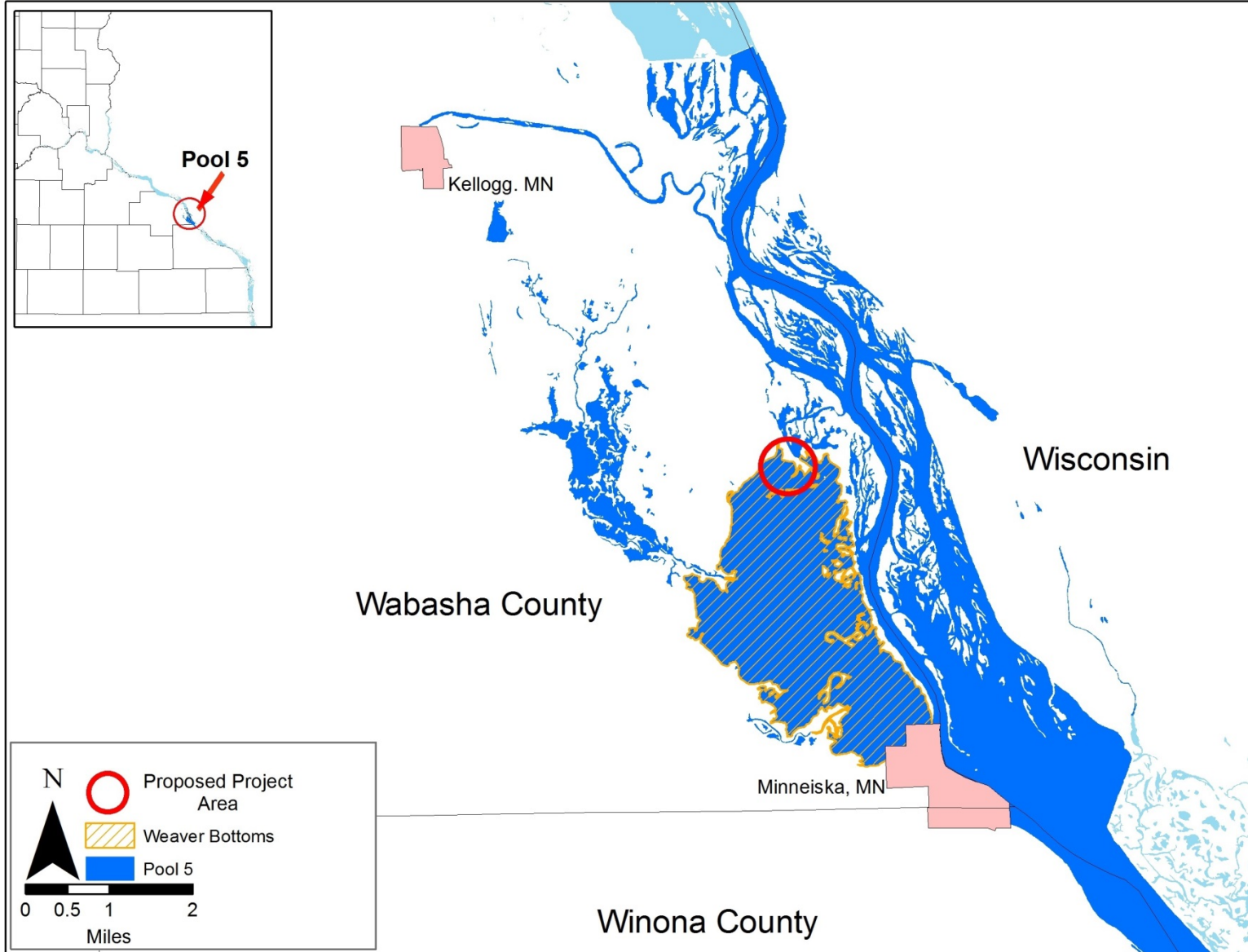


Figure 1. Project location map - Weaver Bottoms (Pool 5) overview.

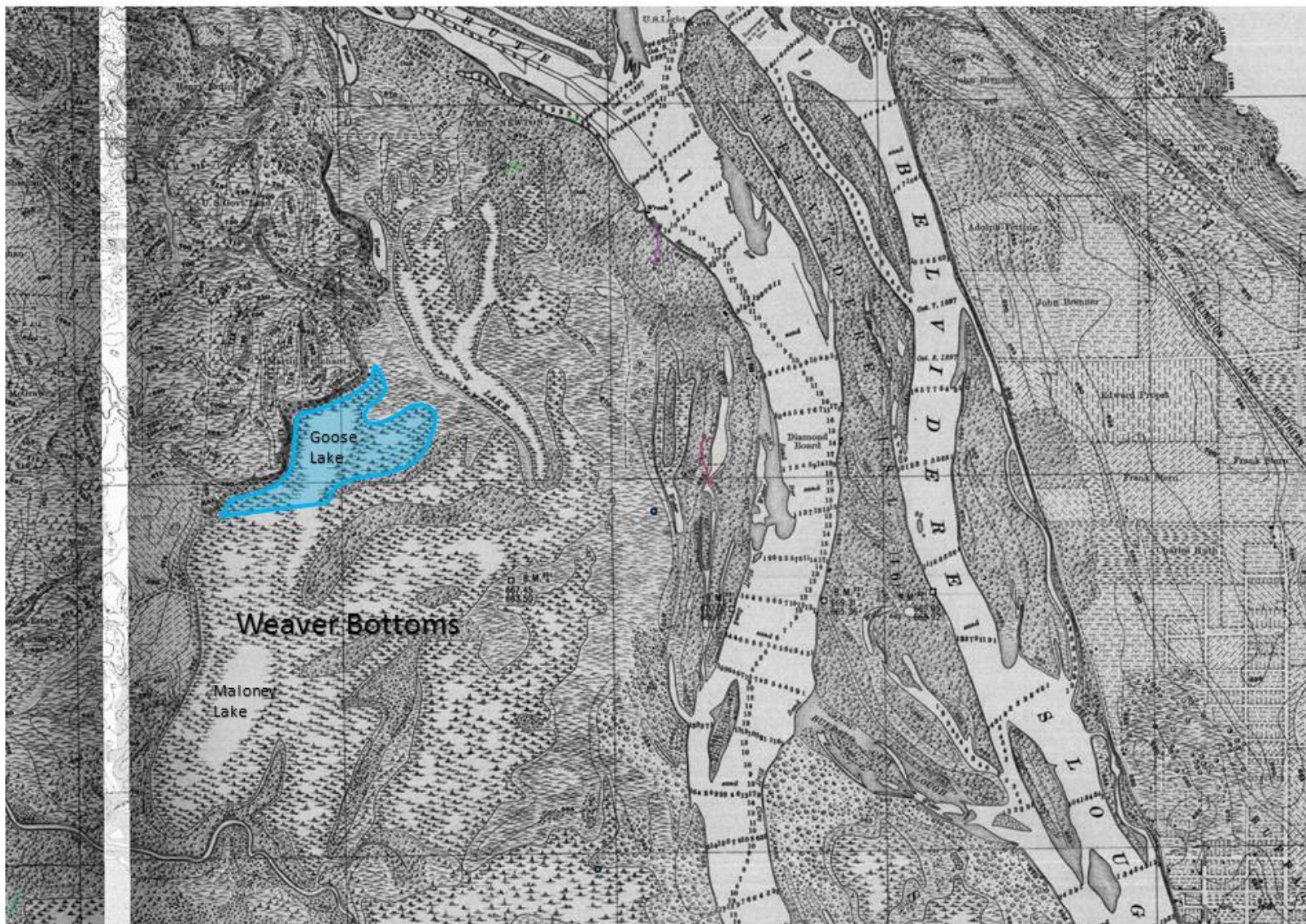


Figure 2. Brown's Survey map (1890s) of the Weaver Bottoms and Goose Lake project area pre-impoundment conditions.

Pool 5 – Weaver Bottoms – Goose Lake Restoration Project

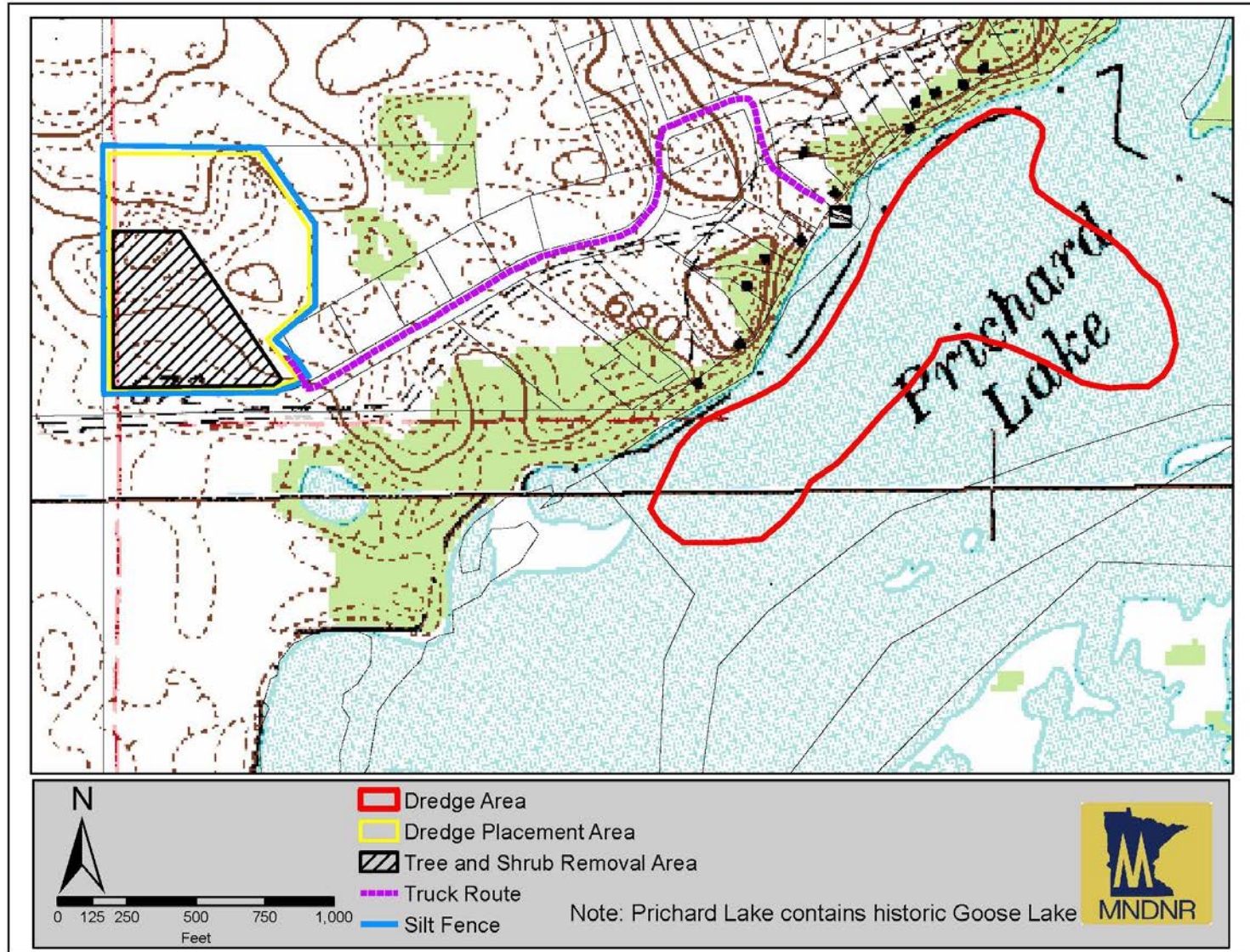
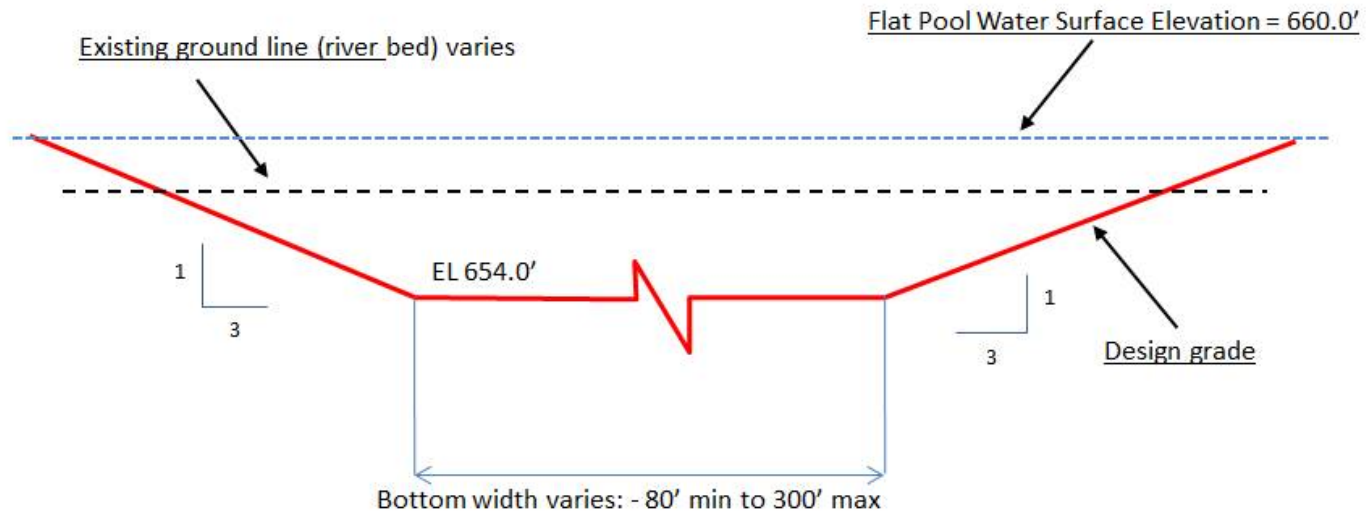


Figure 3. Topographic map with project boundaries for the dredge site, truck route, and dredge placement site.



Assume 6' deep dredge cut with dredging tolerance of +0" , -8" (EL 654.0 to 653.33)

Figure 4. Typical dredge cut specifications section drawing with side slopes and dredging elevations.

Pool 5 – Weaver Bottoms – Goose Lake Restoration Project

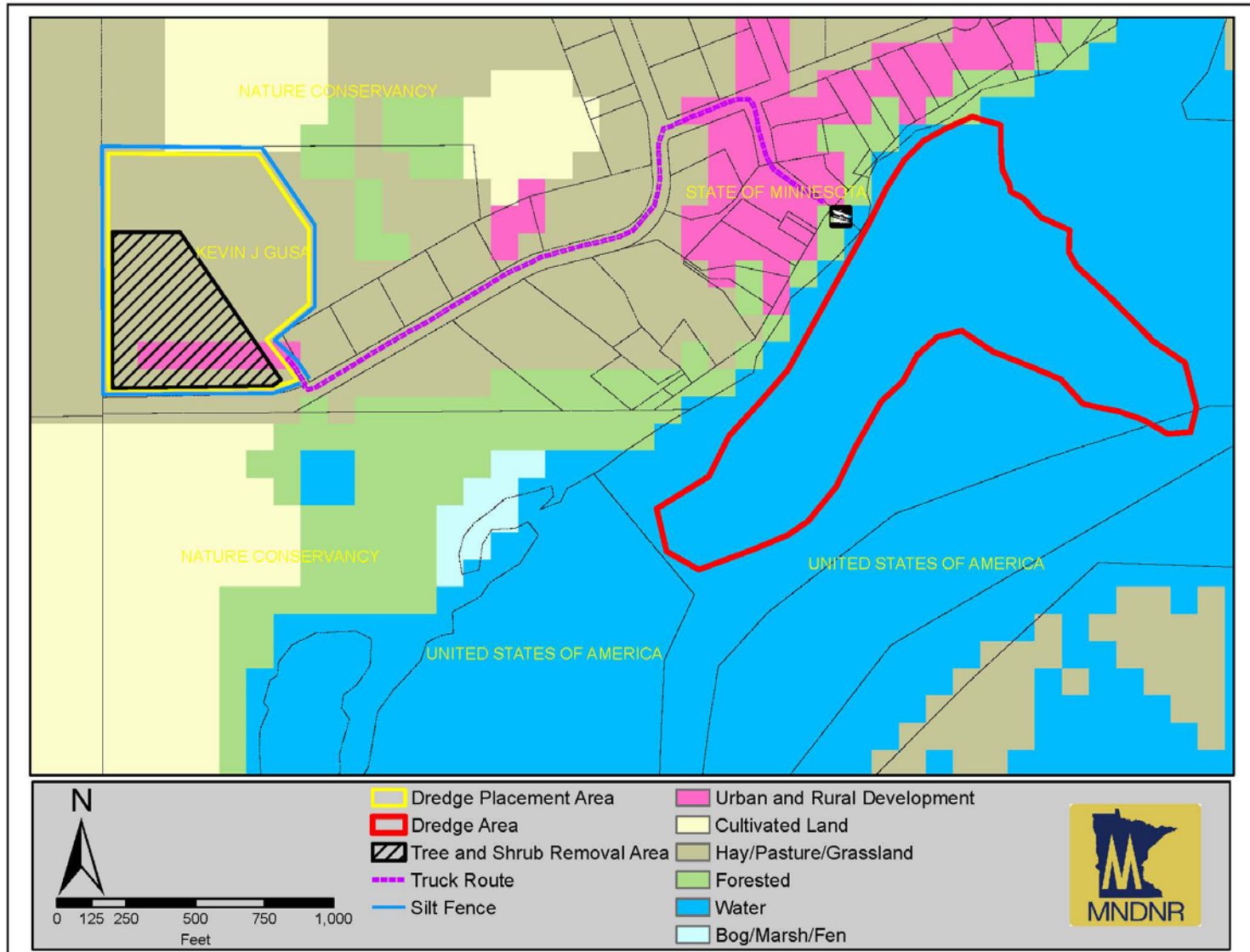


Figure 5. Map of land use and cover types in the project area.

Pool 5 – Weaver Bottoms – Goose Lake Restoration Project

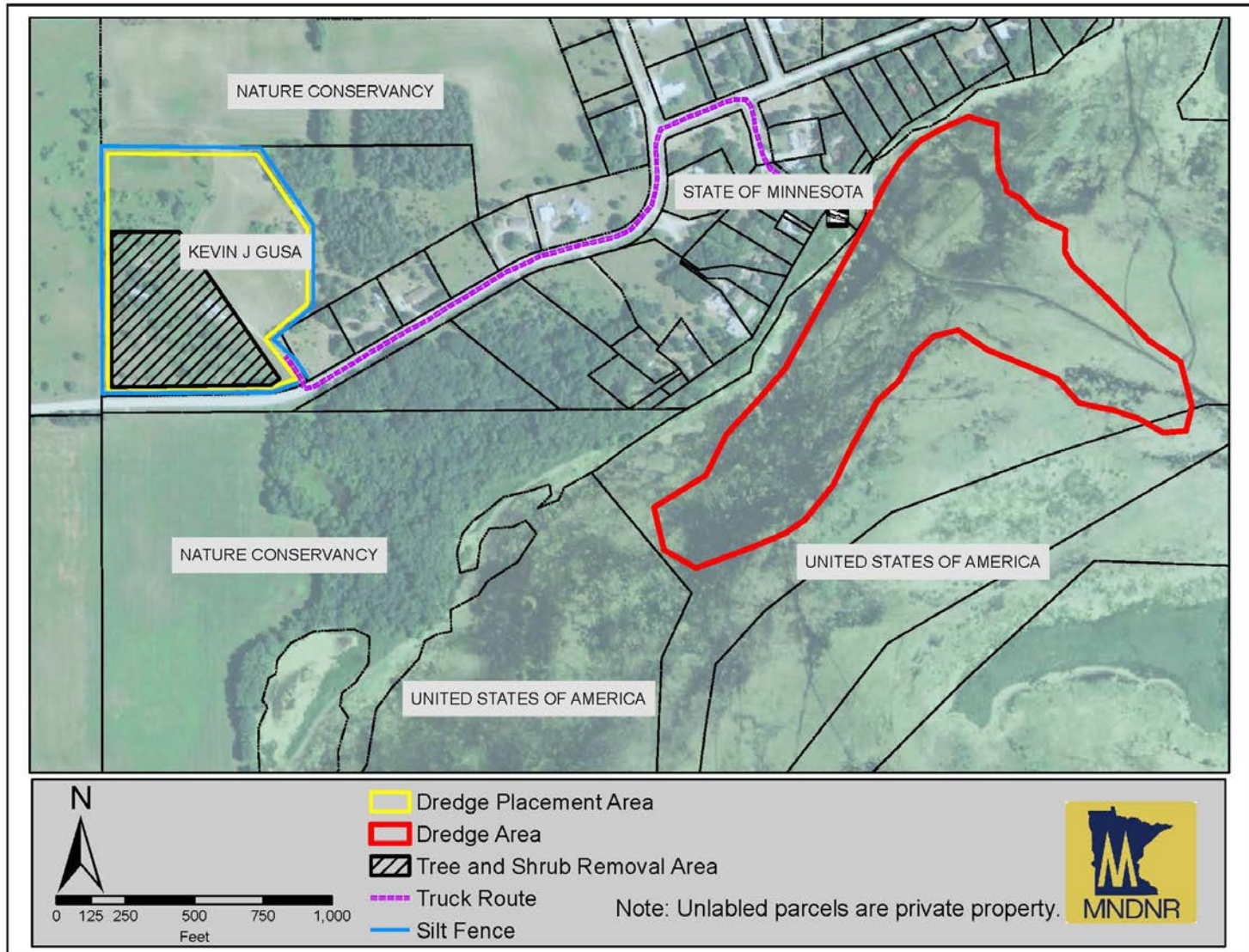


Figure 6. 2013 aerial photo of parcels and land ownership in the project area.

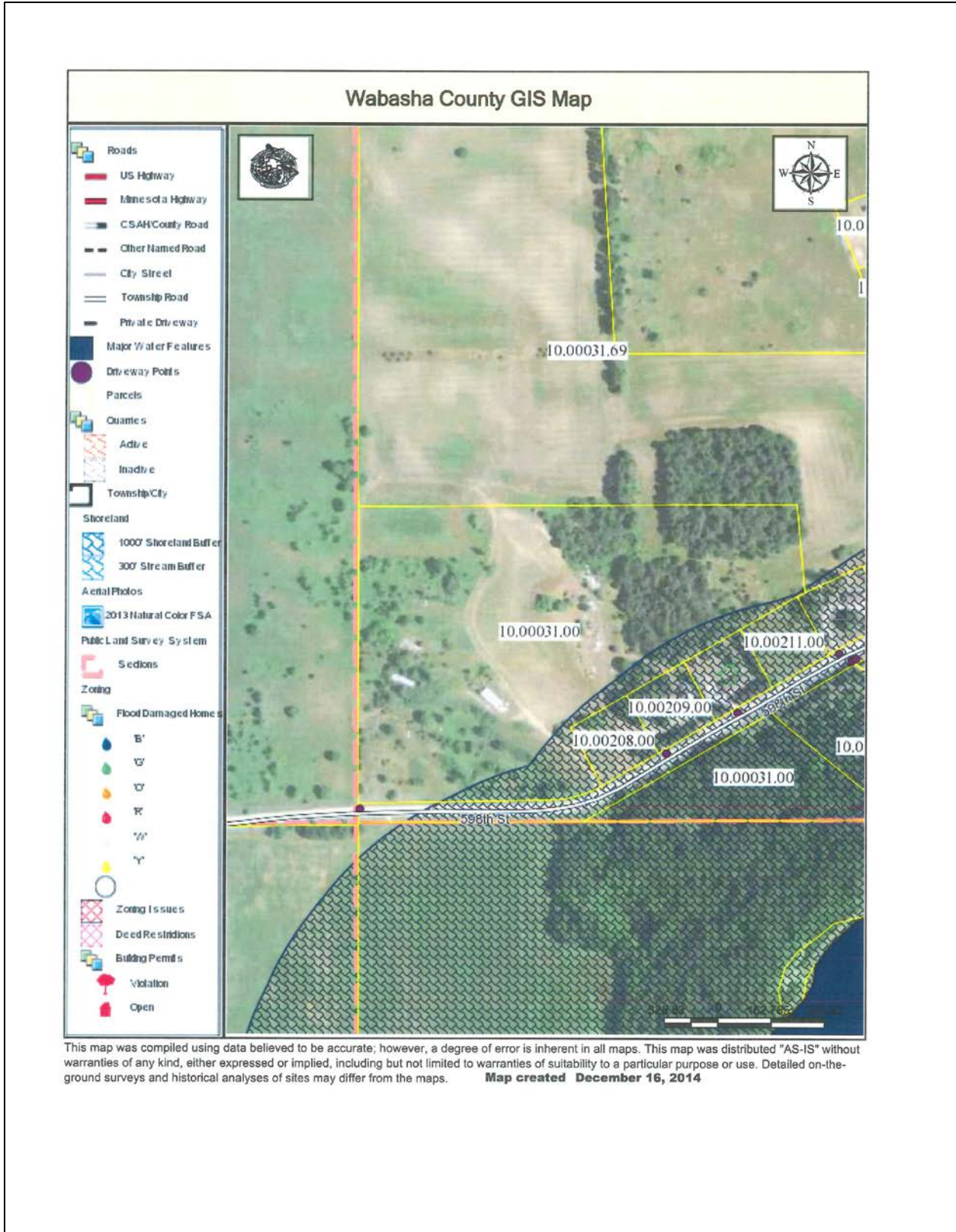


Figure7. Wabasha County Shoreland Zoning district map.