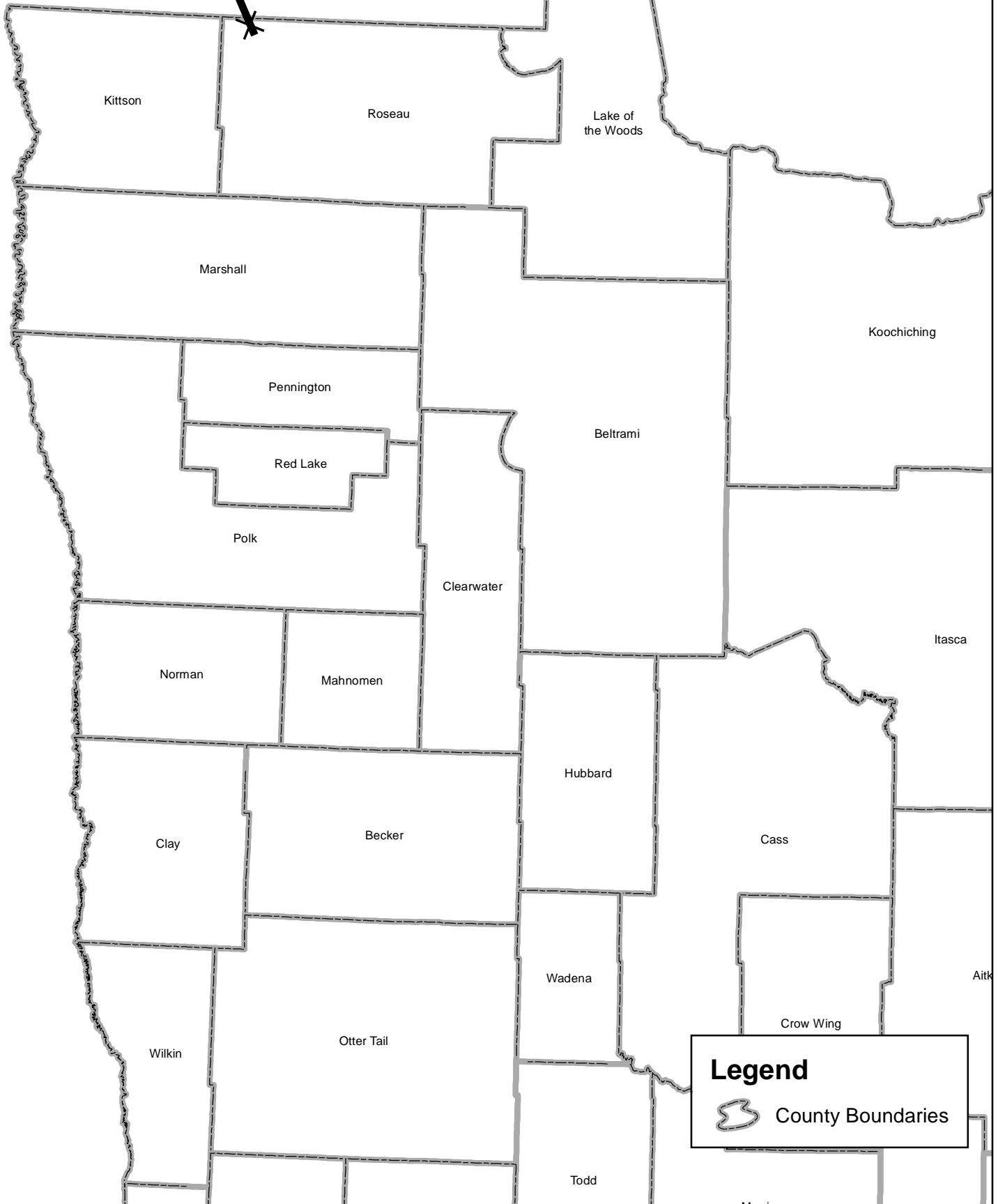


Project Location



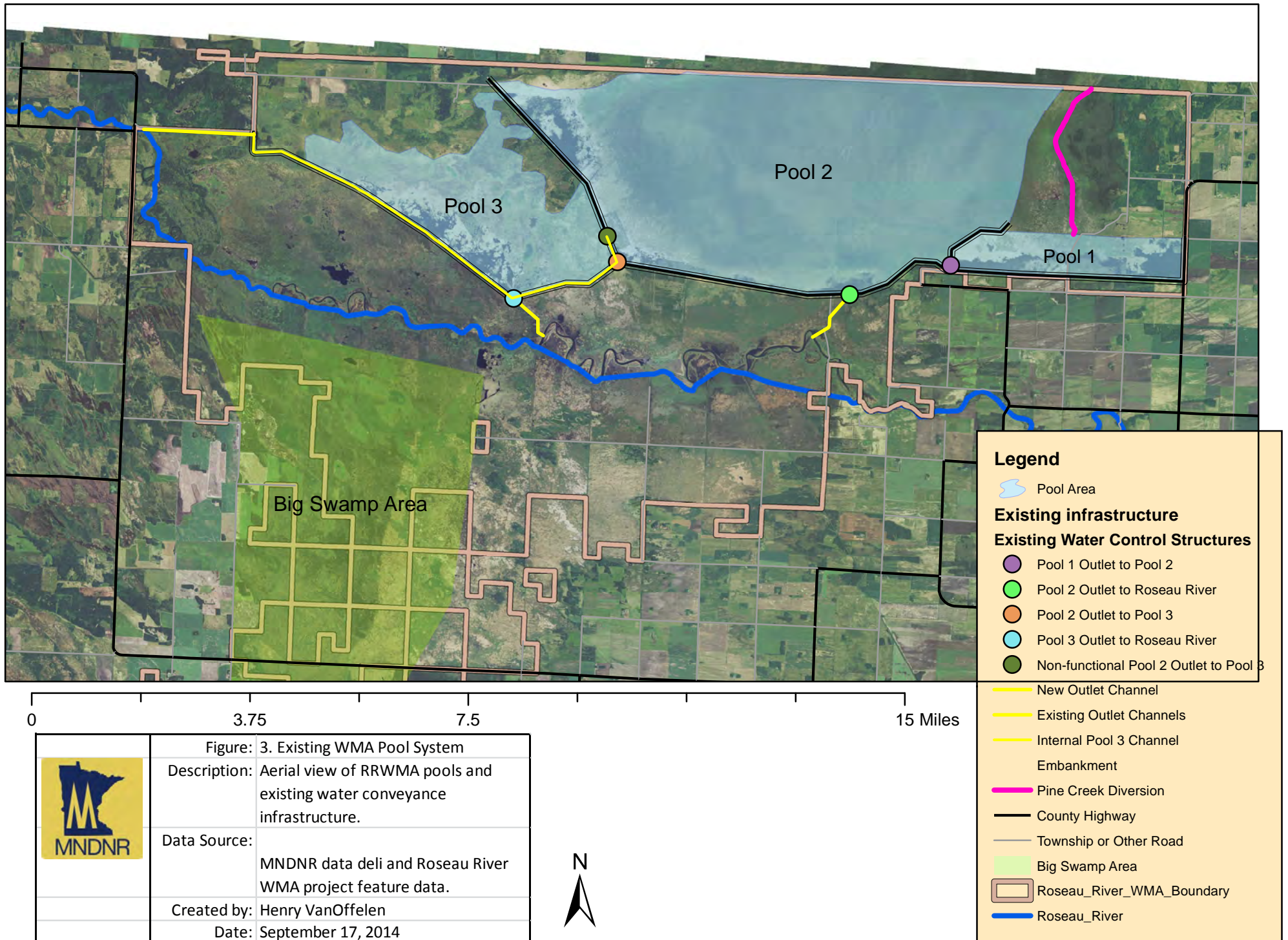




Figure 4. Picture of emergency spillway area along the south embankment of Pool 3 of the Roseau River Wildlife Management Area.

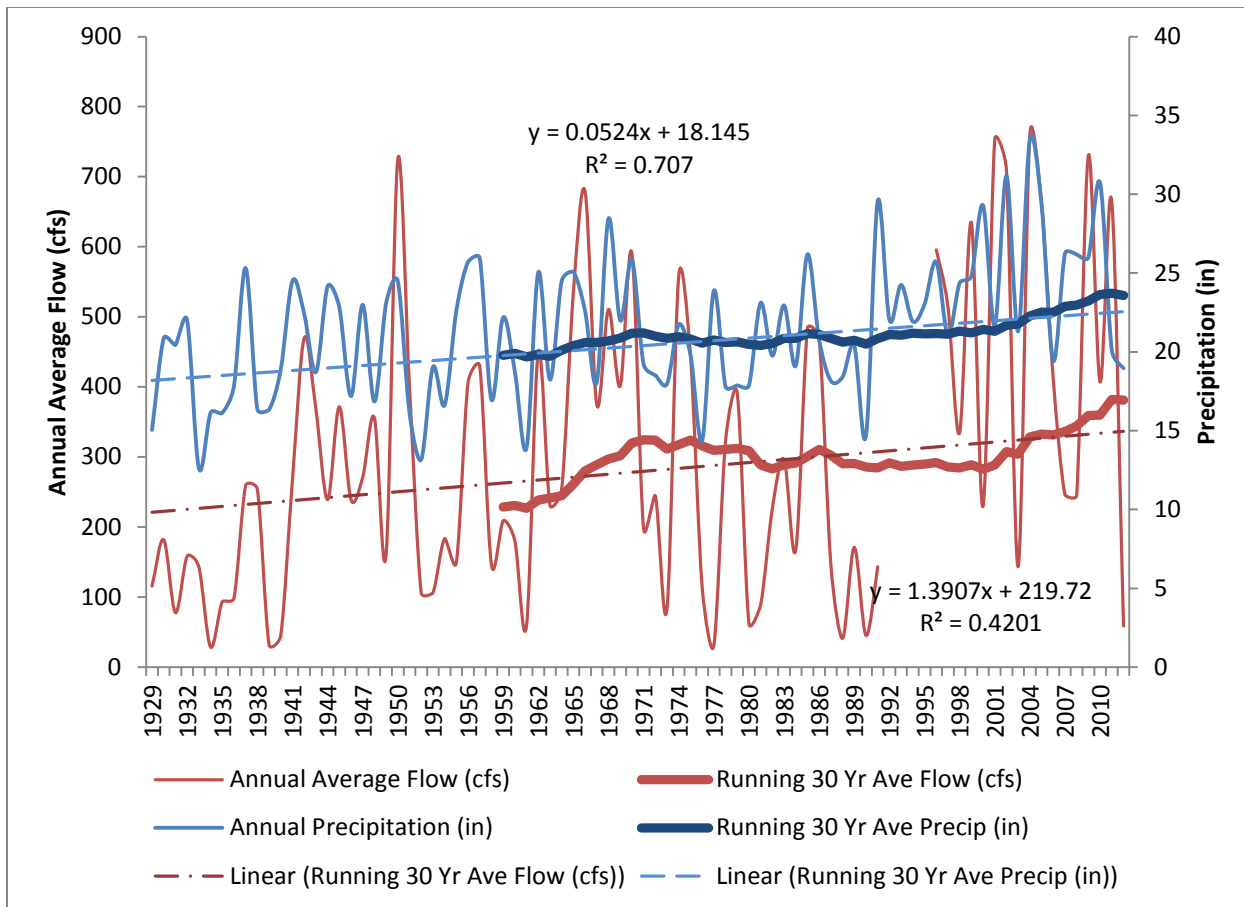
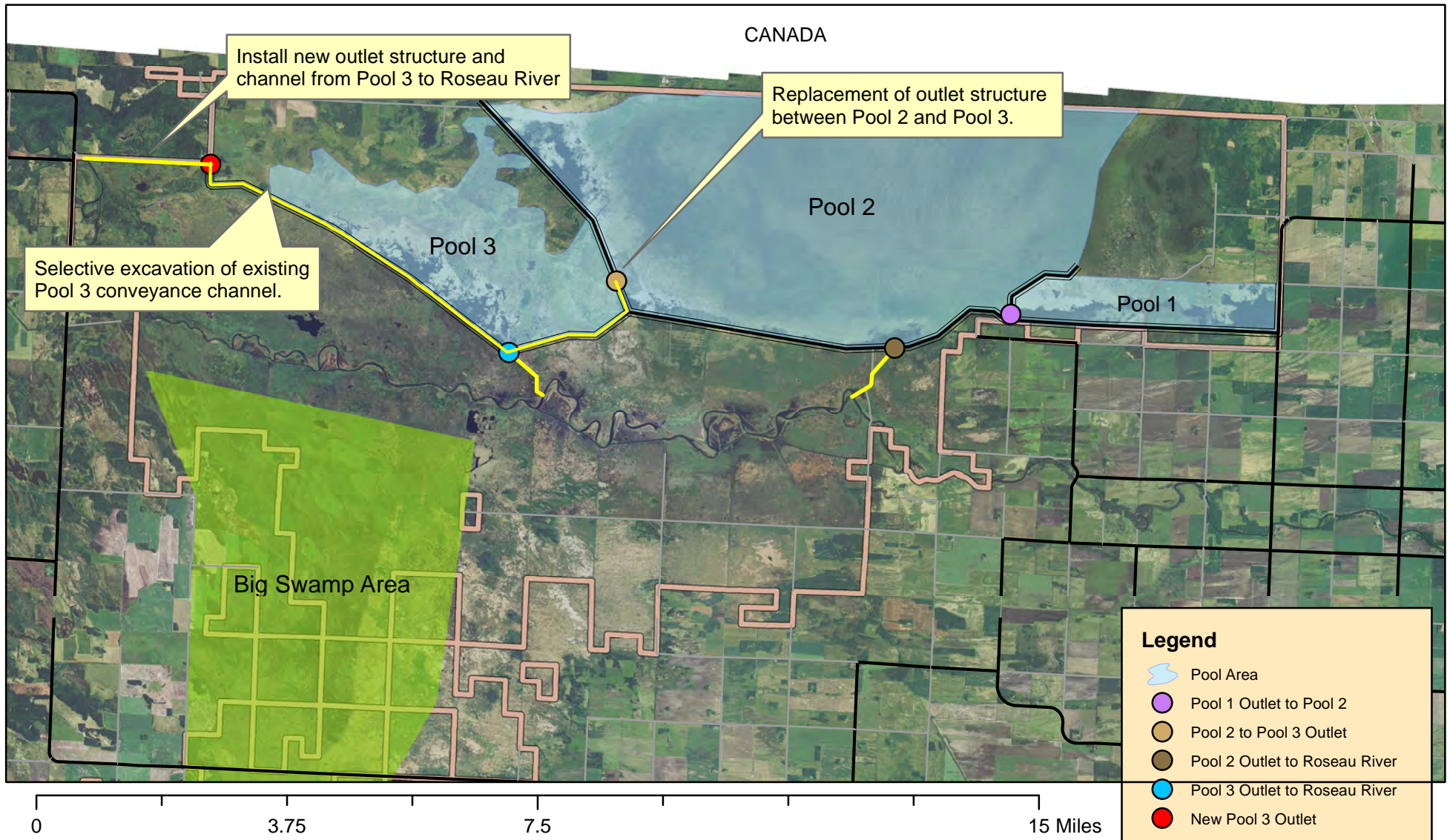



Figure 5. Graph of total annual precipitation and average annual flow at the USGS gage at Ross, MN upstream of the Roseau River Wildlife Management Area.

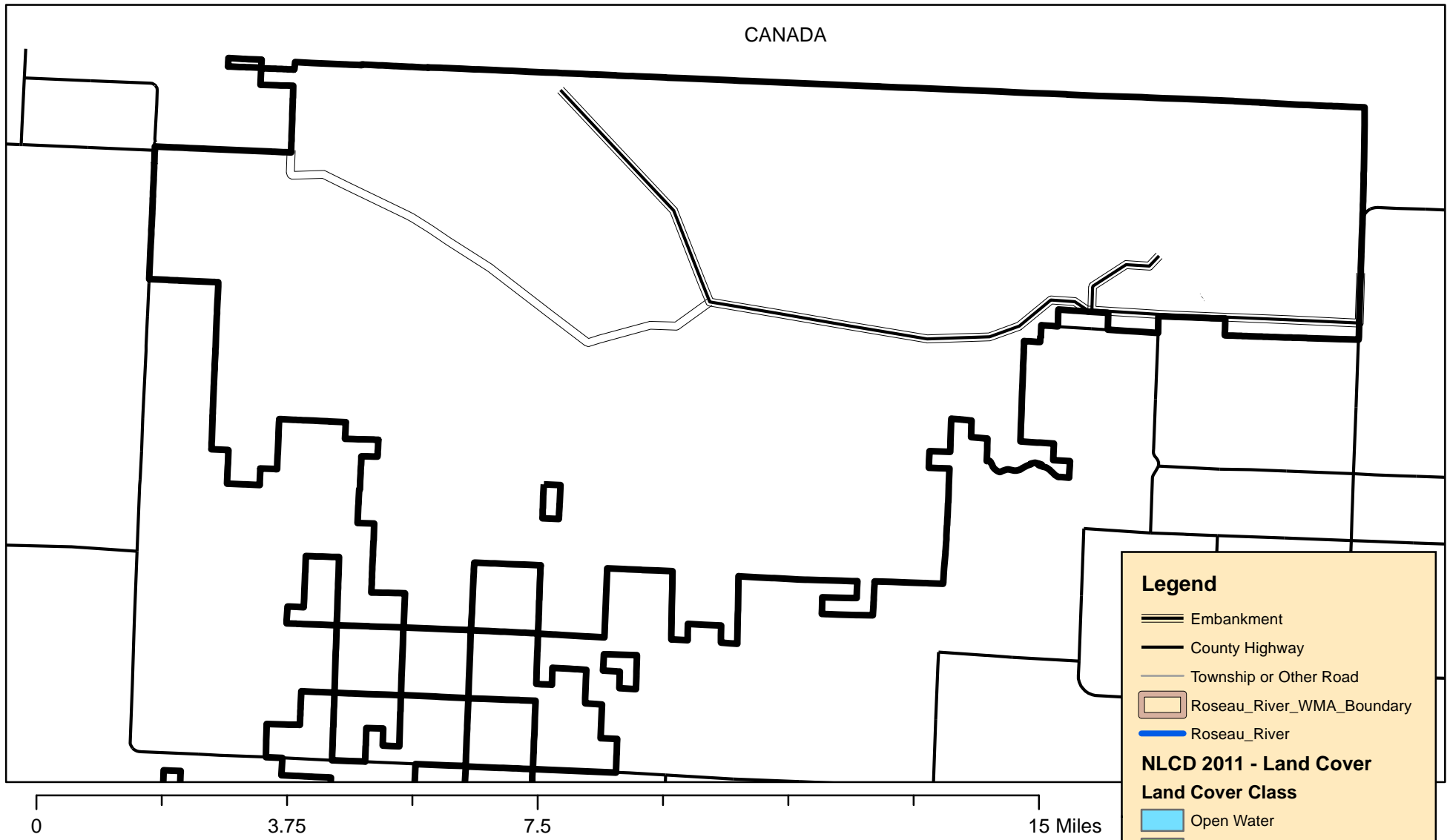


Legend

- Pool Area
- Pool 1 Outlet to Pool 2
- Pool 2 to Pool 3 Outlet
- Pool 2 Outlet to Roseau River
- Pool 3 Outlet to Roseau River
- New Pool 3 Outlet
- New Outlet Channel
- Existing Outlet Channels
- Internal Pool 3 Channel
- Embankment
- County Highway
- Township or Other Road
- Big Swamp Area
- Roseau_River_WMA_Boundary

	<p>Figure: 6. RRWMA Enhancement Project Features</p>
	<p>Description: Aerial view of RRWMA pools with enhancement project features included in conveyance infrastructure.</p>
	<p>Data Source: MNDNR data deli and Roseau River WMA project feature data.</p>
	<p>Created by: Henry VanOffelen Date: September 17, 2014</p>





CANADA

Legend

- Embankment
- County Highway
- Township or Other Road
- Roseau_River_WMA_Boundary
- Roseau_River

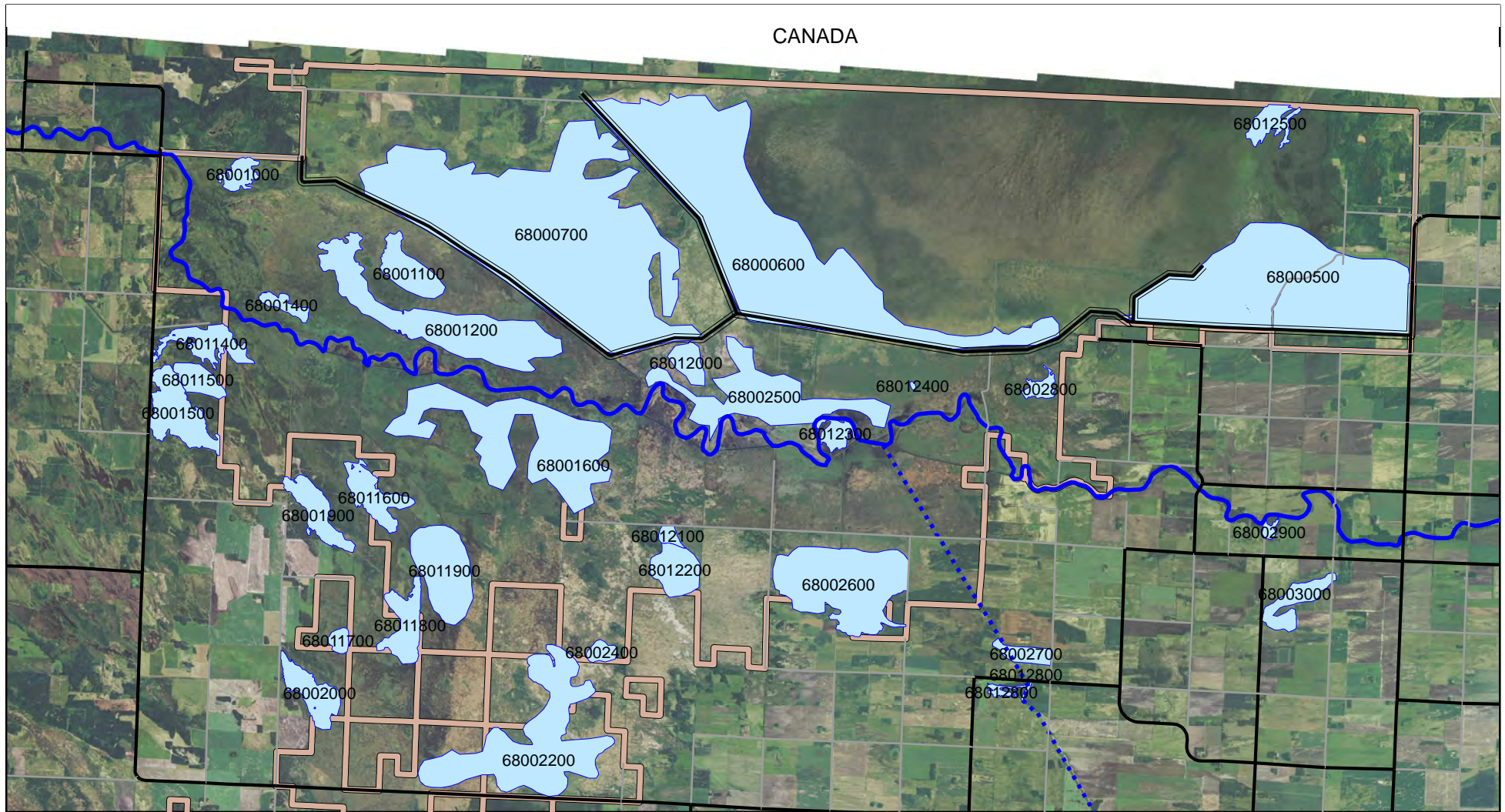
NLCD 2011 - Land Cover

Land Cover Class

- Open Water
- Deciduous Forest
- Mixed Forest
- Shrub/Scrub
- Grassland/Herbaceous
- Pasture/Hay
- Cultivated Crops
- Woody Wetlands
- Emergent Herbaceous Wetlands


	Figure: 7. Land Use
	Description: National Land Cover Dataset (2011) Land Use within the Project Area.
	Data Source: MNDNR data deli.
	Created by: Henry VanOffelen
	Date: September 24, 2014





CANADA

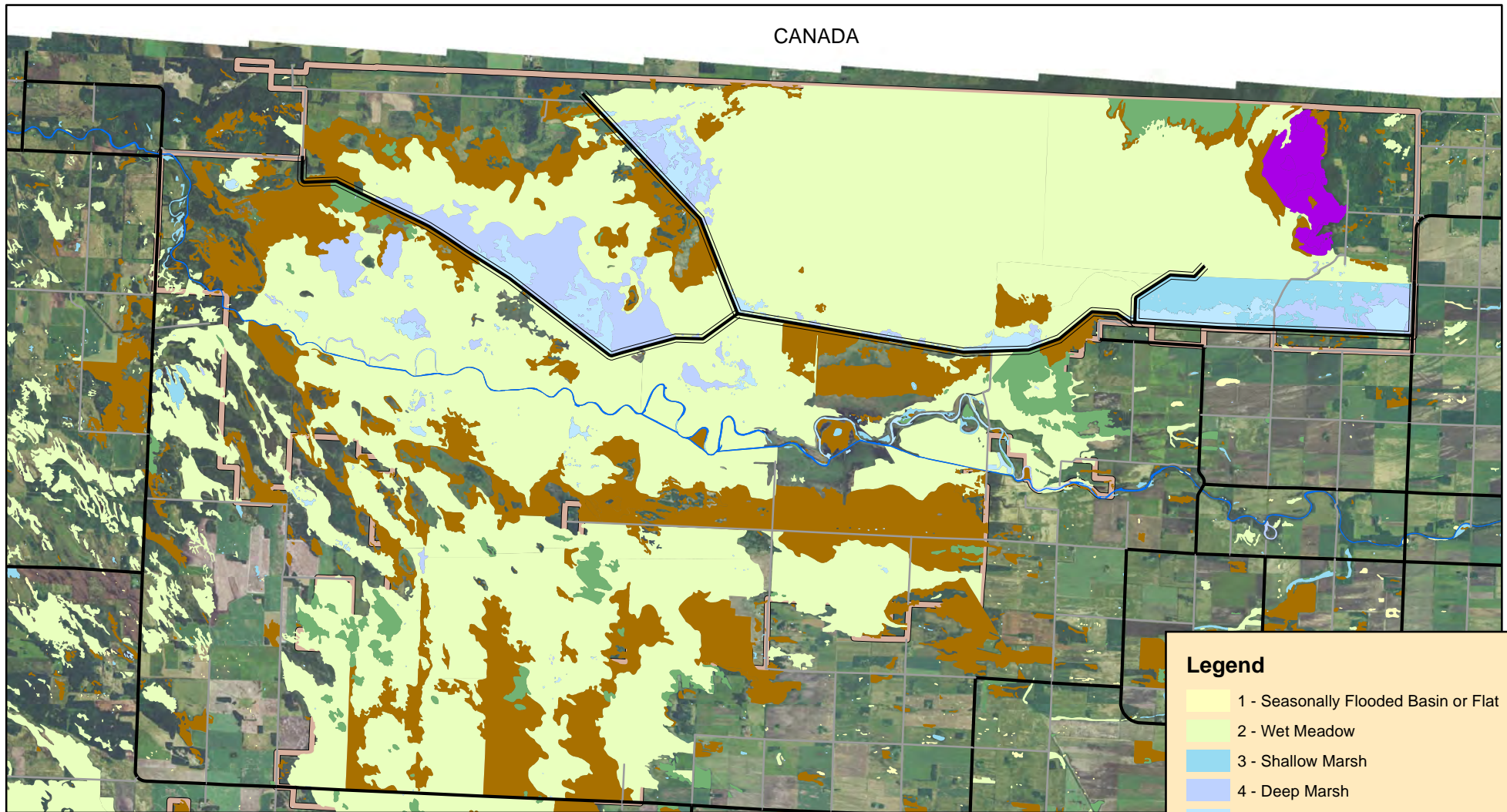
0 3.75 7.5 15 Miles

	Figure: 8. Public Waters Inventory
	Description: Public Waters Inventory data with DOW labels.
	Data Source: MNDNR data deli.
	Created by: Henry VanOffelen
	Date: September 24, 2014



Legend

- Public Water Watercourse
- ⋯ Public Ditch/Altered Natural Watercourse
- Public Waters Basins
- Embankment
- County Highway
- Township or Other Road
- Roseau_River_WMA_Boundary




CANADA

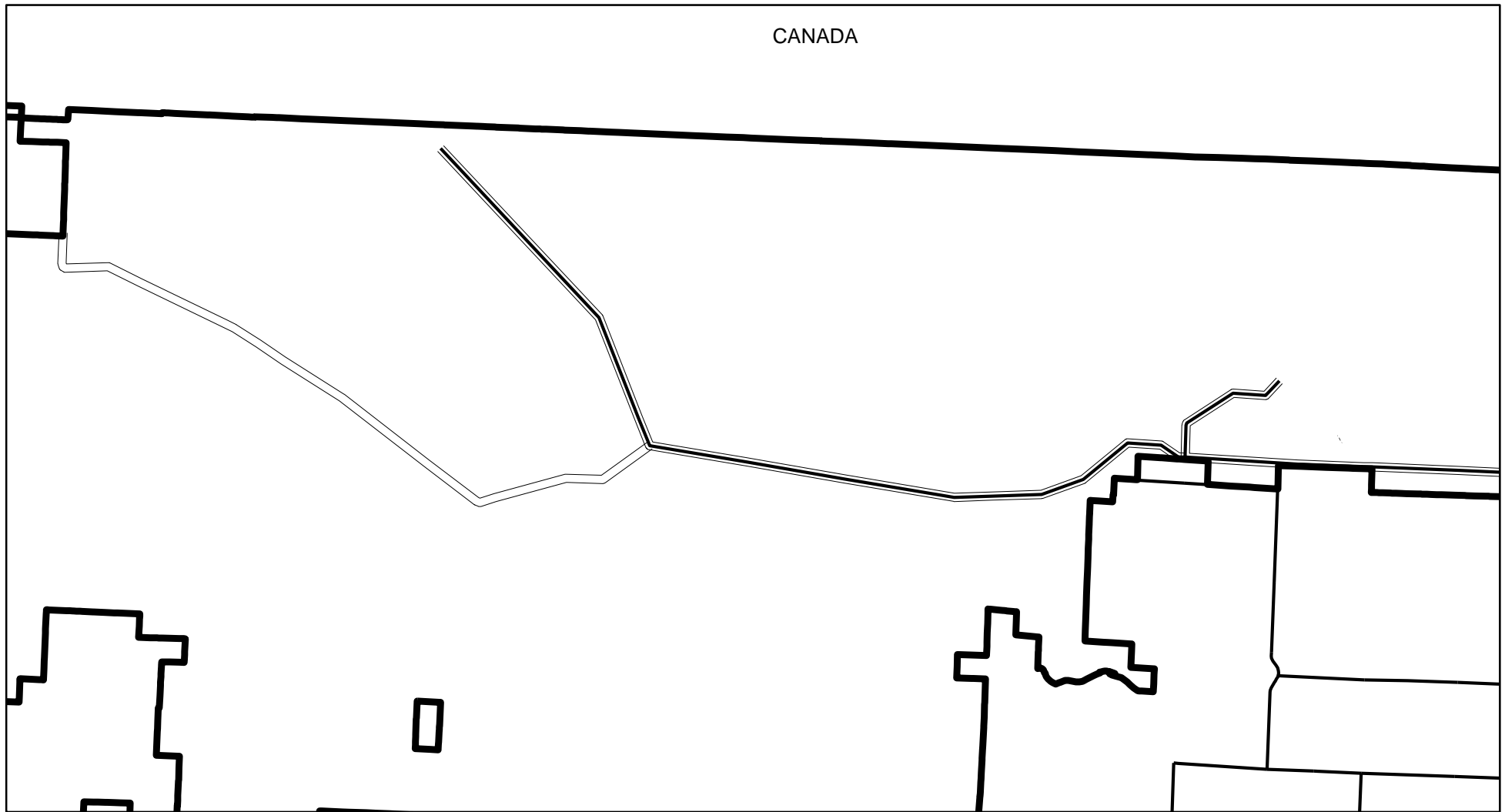
0 3.75 7.5 15 Miles

Legend

- 1 - Seasonally Flooded Basin or Flat
- 2 - Wet Meadow
- 3 - Shallow Marsh
- 4 - Deep Marsh
- 5 - Shallow Open Water
- 6 - Shrub Swamp
- 7 - Wooded Swamp
- 8 - Bogs
- Municipal and Industrial Activities
- Riverine Systems
- Embankment
- County Highway
- Township or Other Road
- Roseau_River_WMA_Boundary

	Figure: 9. National Wetlands Inventory (NWI)
	Description: National Wetlands Inventory data for the RRWMA Area.
	Data Source: MNDNR data deli.
	Created by: Henry VanOffelen
	Date: September 24, 2014






CANADA

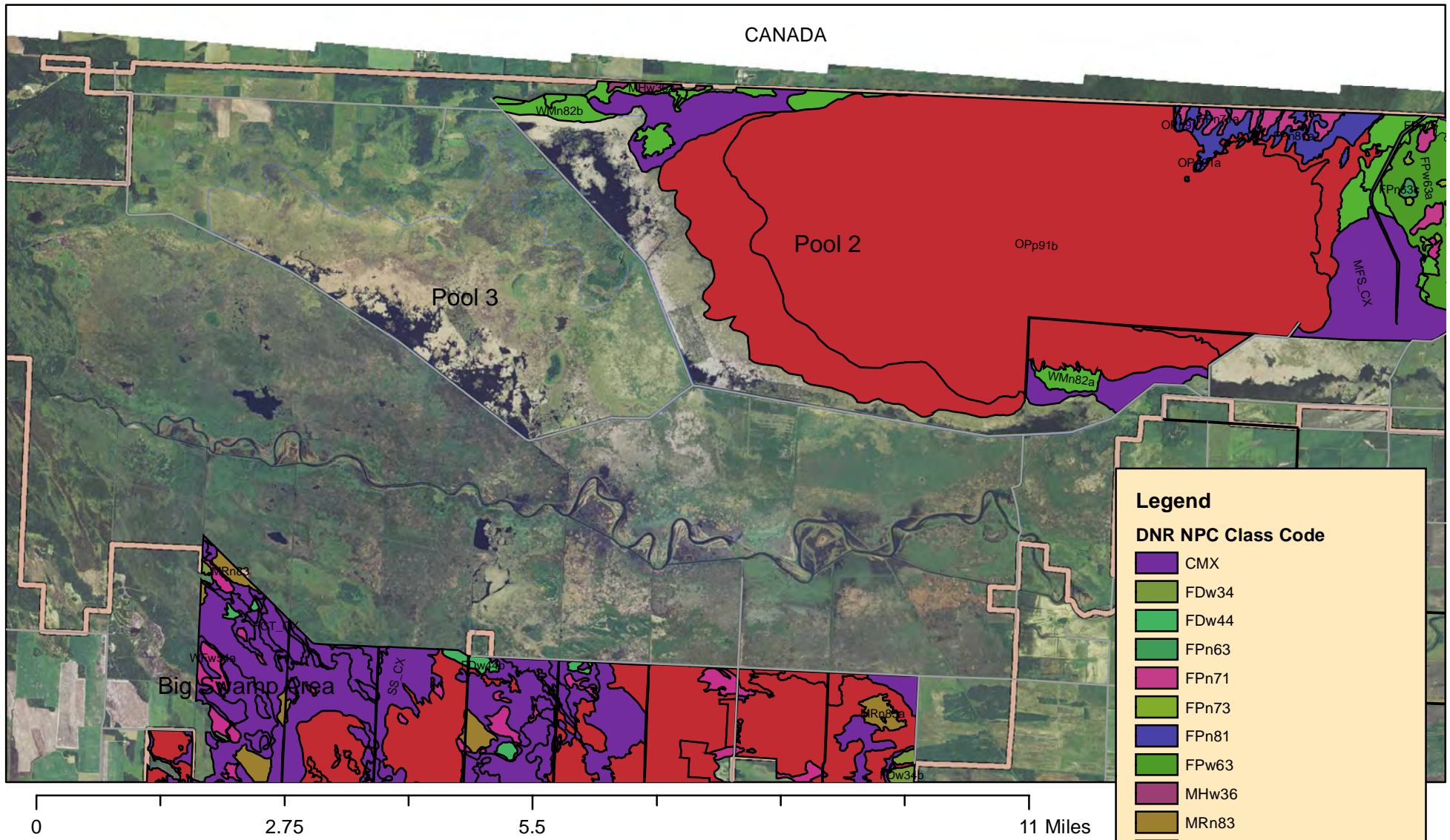
0 2.75 5.5 11 Miles

Legend

- Vegetation Zone 1
- Vegetation Zone 2
- Vegetation Zone 3
- Embankment
- County Highway
- Township or Other Road
- Roseau_River_WMA_Boundary

	Figure: 10. Vegetation Zones within Pool 2 and Pool 3.
	Description: Vegetation types characterized by zone in the RRWMA.
	Data Source: RRWMA staff data.
	Created by: Henry VanOffelen
	Date: September 24, 2014





Legend

DNR NPC Class Code

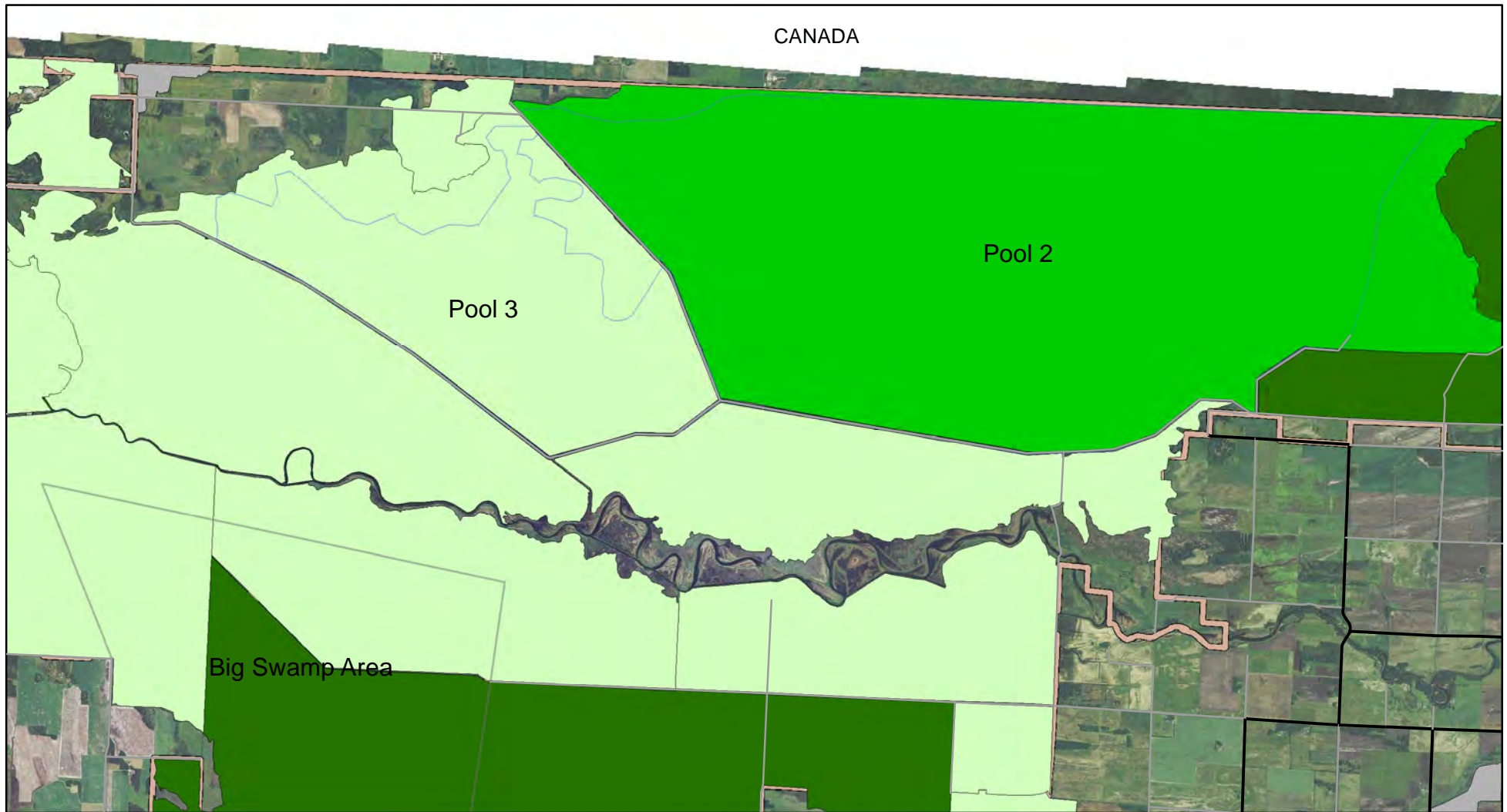
- CMX
- FDw34
- FDw44
- FPn63
- FPn71
- FPn73
- FPn81
- FPw63
- MHw36
- MRn83
- OPn91
- OPp91
- WFW54
- WMn82

- County Highway
- Township or Other Road
- Big Swamp Area
- Roseau_River_WMA_Boundary



Figure:	11. Native Plant Community Class Codes within Pool 2 and Big Swamp Area.
Description:	NPC Class Codes
Data Source:	MN DNR
Created by:	Henry VanOffelen
Date:	December 10, 2014





CANADA

Pool 2


Pool 3

Big Swamp Area

0 2.75 5.5 11 Miles

Legend

- County Highway
- Township or Other Road
- Big Swamp Area
- Outstanding
- High
- Moderate
- Below
- Roseau_River_WMA_Boundary

	Figure: 12. MBS Sites of Biodiversity Significance within Pool 2 and Pool 3.
	Description: MBS Biodiversity Significance
	Data Source: MN DNR
	Created by: Henry VanOffelen
	Date: December 10, 2014

