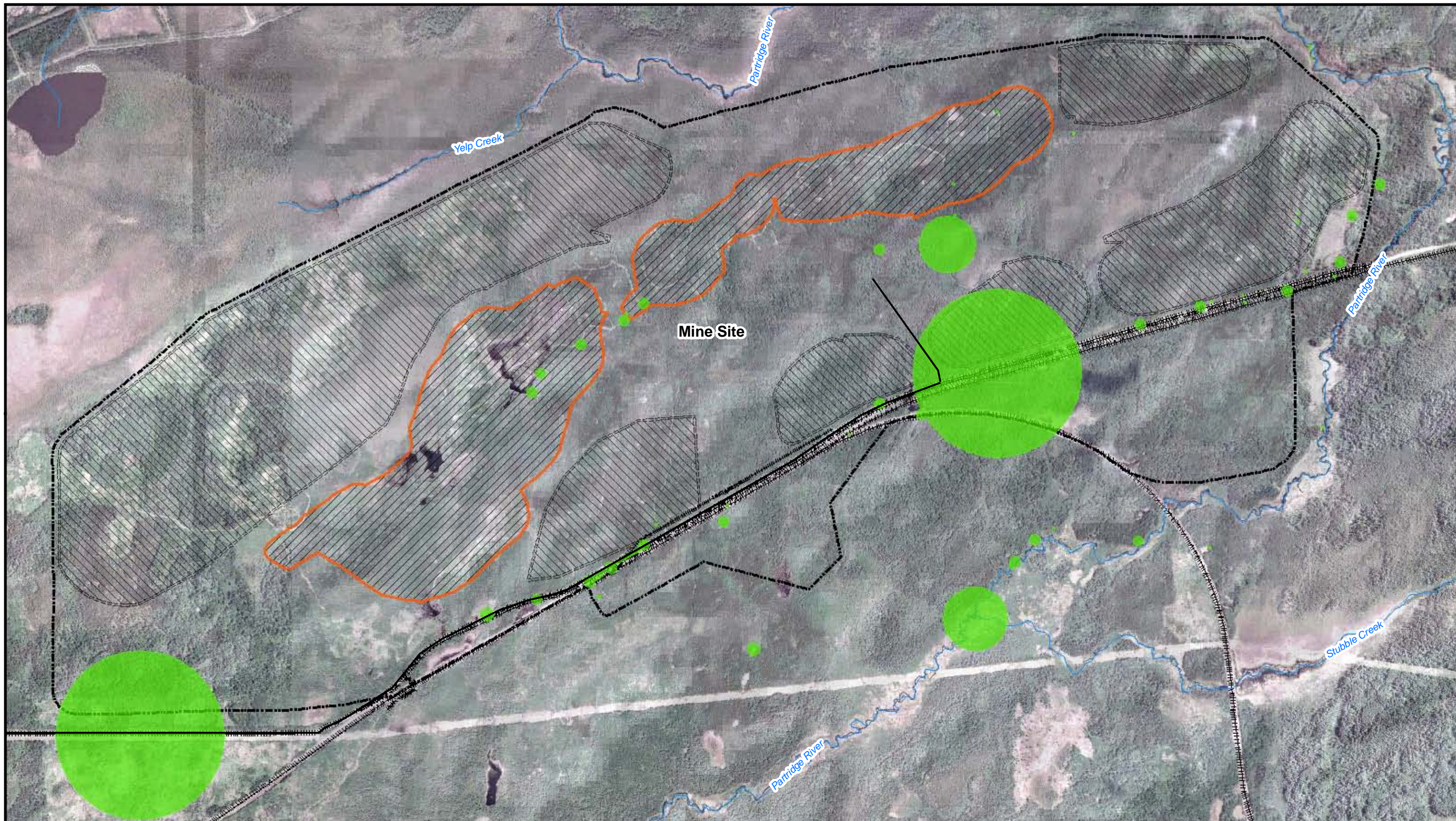


Figure 4.3-1
Land Cover at the Mine Site
 NorthMet Project
 PolyMet Mining, Inc.
 St. Louis County, Minnesota
 October 2009





Map/Data Source: 2009 MnDNR and Barr Engineering

- Rivers/Streams/Drains
- Existing Railroad
- Mine Pit Impact Areas
- Stockpile Impact Areas
- Endangered, Threatened, and Special Concern Vegetation Species

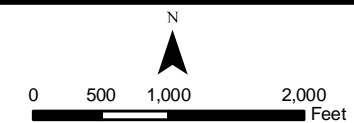


Figure 4.3-2
ETSC Vegetation Species at the Mine Site

NorthMet Project
PolyMet Mining, Inc.
St. Louis County, Minnesota

October 2009