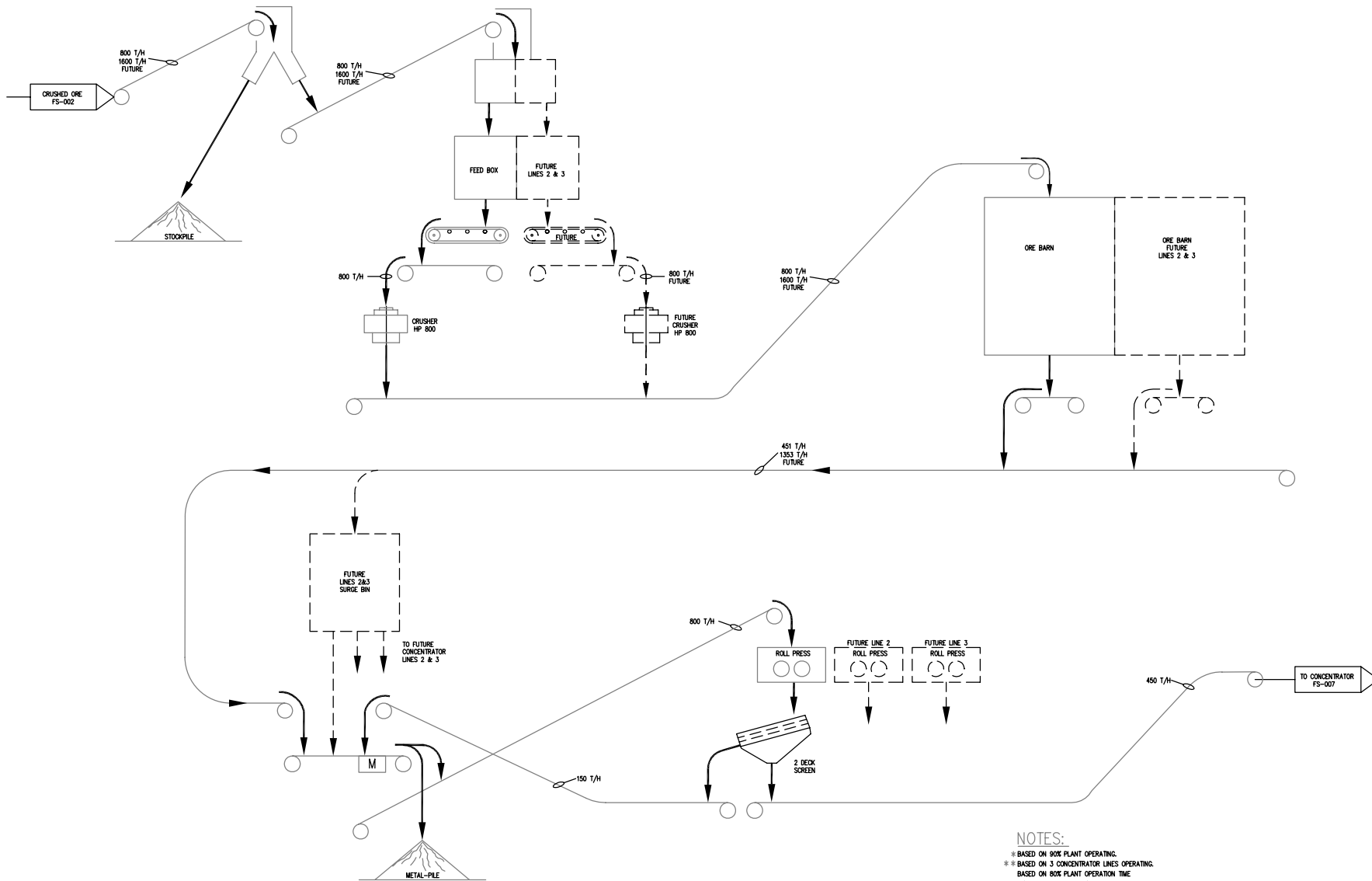


NOTE:
TONNAGE RATES ACCOUNT FOR
70% CRUSHER OPERATING TIME

REVISIONS NO. DESCRIPTION BY CH. APPROVED DATE 1. ISSUED FOR REVIEW DAW BEK 4/28/08 2. ISSUED FOR REVIEW SJP BEK 1/26/08										REVISIONS NO. DESCRIPTION BY CH. APPROVED DATE 1. ISSUED FOR REVIEW 2. APPROVED										SCALE NONE DESIGNED BY: BEK 3/28/08 DRAWN SJP 3/28/08 CHECKED APPROVED 1 APPROVED 2		DATE TO CLIENT 3/28/08 DATE TO FIELD 3/28/08 A B C 0 1 2 3 4 5 6 7							CLIENT MESABI NUGGET PHASE II HOYT LAKES, MN		ORAMCO engineering corporation HIBBING, MINNESOTA		TITLE COARSE CRUSHING TO SUPPORT ORE NUGGET LINE PROCESS FLOWSHEET 07927-FS-002 CAD: G:\07927\927FS002_B Wed, Mar 26, 2008 12:58pm	
---	--	--	--	--	--	--	--	--	--	--	--	--	--	--	--	--	--	--	--	--	--	--	--	--	--	--	--	--	---	--	--	--	---	--

Figure 6-5 Crusher/Concentrator Flow Sheet 1 of 5



NOTES:
 * BASED ON 80% PLANT OPERATING.
 ** BASED ON 3 CONCENTRATOR LINES OPERATING.
 BASED ON 80% PLANT OPERATION TIME
 T/H = METRIC TONNES/HOUR

NOTE: This print is the property of NORAMCO Engineering Corp. It must not be traced nor reproduced in any manner nor shall it be submitted to outside parties for examination without our consent. It shall be used only as a means of reference to work designed or furnished by us.

CLIENT
 MESABI NUGGET PHASE II
 HOYT LAKES, MN

NORAMCO
 engineering
 corporation
 HIBBING, MINNESOTA

NO.	DESCRIPTION	BY	CH.	APPROVED	DATE
1	REISSUED FOR REVIEW	DAW	BEK		1/25/08
2	REISSUED FOR REVIEW	SJP	BEK		3/26/08
3	REISSUED FOR REVIEW	SJP	BEK		12/01/07
4	ISSUED FOR REVIEW	SJP	BEK		11/20/07

NO.	DESCRIPTION	BY	CH.	APPROVED	DATE
1					
2					
3					
4					

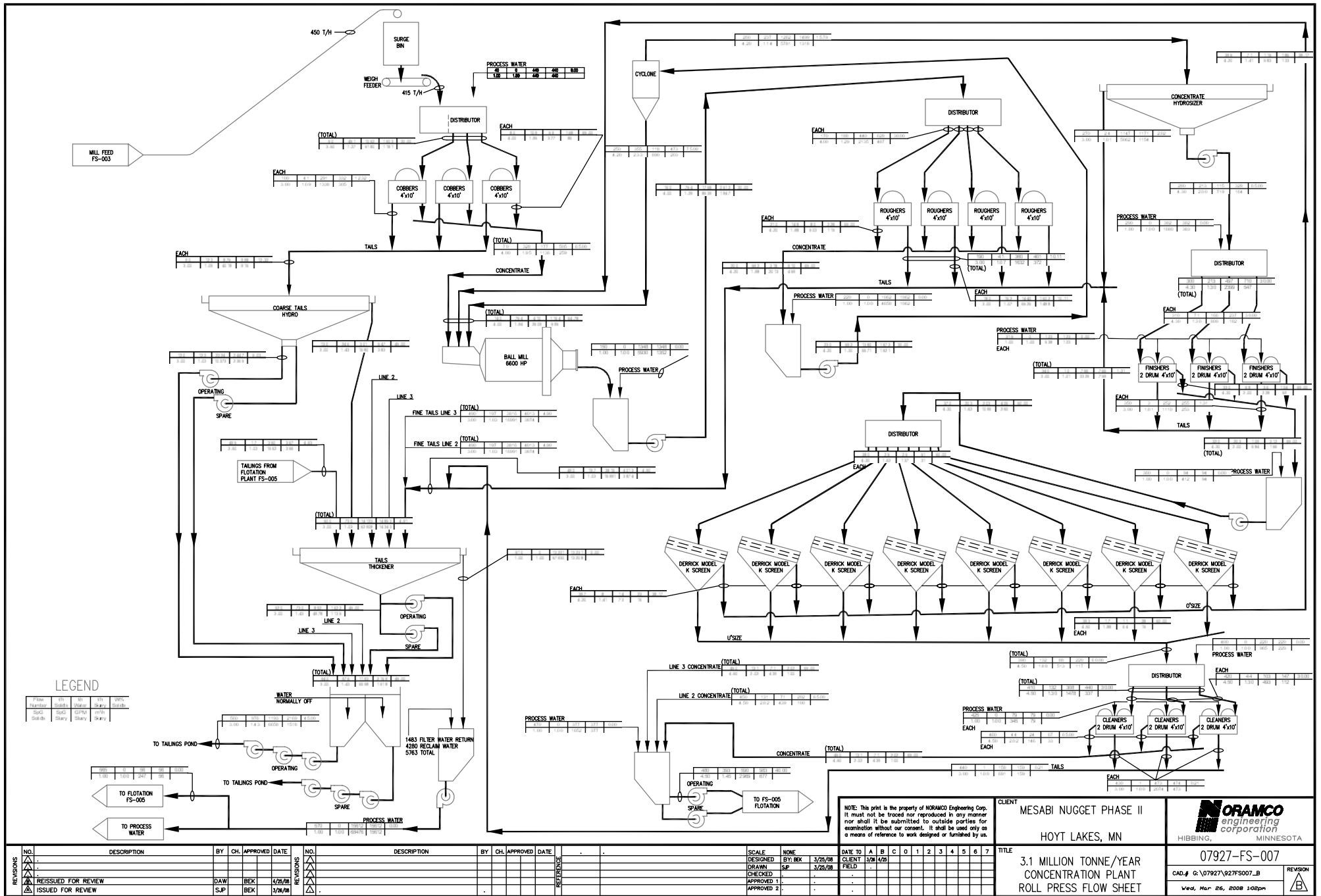
SCALE	DATE	BY	CH.	APPROVED	DATE
DESIGNED	11/26/07	BEK			
DRAWN	11/27/07	SJP			
CHECKED					
APPROVED 1					
APPROVED 2					

DATE TO	A	B	C	D	0	1	2	3	4	5	6
CLIENT											
FIELD											

TITLE
 3.1 MILLION TONNE/YEAR
 CONCENTRATION PLANT
 CRUSHING / ROLL PRESS

07927-FS-003
 CAD.# G:\07927\927FS003.D
 Wed, Mar 26, 2008 12:59pm

Figure 6-5 Crusher/Concentrator Flow Sheet 2 of 5



LEGEND

Process	Operating	Standby	Water	Skirt	Skirt	Skirt
4" Solid	4" Solid	4" Solid	4" Solid	4" Solid	4" Solid	4" Solid
4" Solid	4" Solid	4" Solid	4" Solid	4" Solid	4" Solid	4" Solid

NO.	DESCRIPTION	BY	CH.	APPROVED	DATE
1	ISSUED FOR REVIEW	DAW	BEX		4/28/08
2	ISSUED FOR REVIEW	SJP	BEX		1/26/08

NO.	DESCRIPTION	BY	CH.	APPROVED	DATE
1	DESIGNED	BY: BEX			3/25/08
2	DRAWN	SJP			3/26/08
3	CHECKED				
4	APPROVED				
5	APPROVED 2				

SCALE	NONE	DATE TO CLIENT	A	B	C	0	1	2	3	4	5	6	7
DESIGNED	BY: BEX	3/25/08											
DRAWN	SJP	3/26/08											
CHECKED													
APPROVED													
APPROVED 2													


CLIENT	MESABI NUGGET PHASE II	
	HOYT LAKES, MN	
TITLE	3.1 MILLION TONNE/YEAR CONCENTRATION PLANT ROLL PRESS FLOW SHEET	07927-FS-007
		CAD.# G: 07927/027FS007_B
		Wed, Mar 26, 2008 10:28pm

Figure 6-5 Crusher/Concentrator Flow Sheet 3 of 5

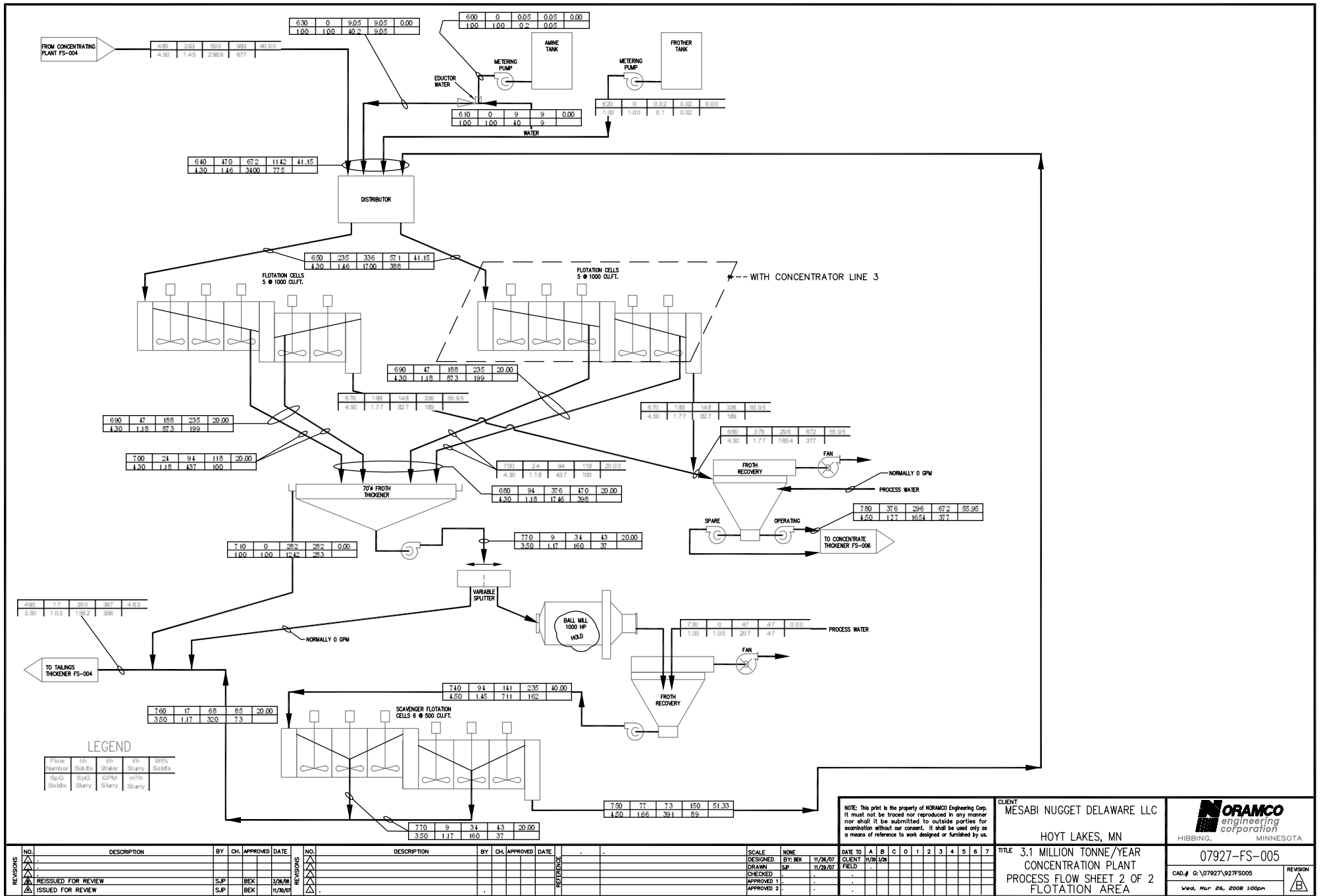


Figure 6-5 Crusher/Concentrator Flow Sheet 4 of 5

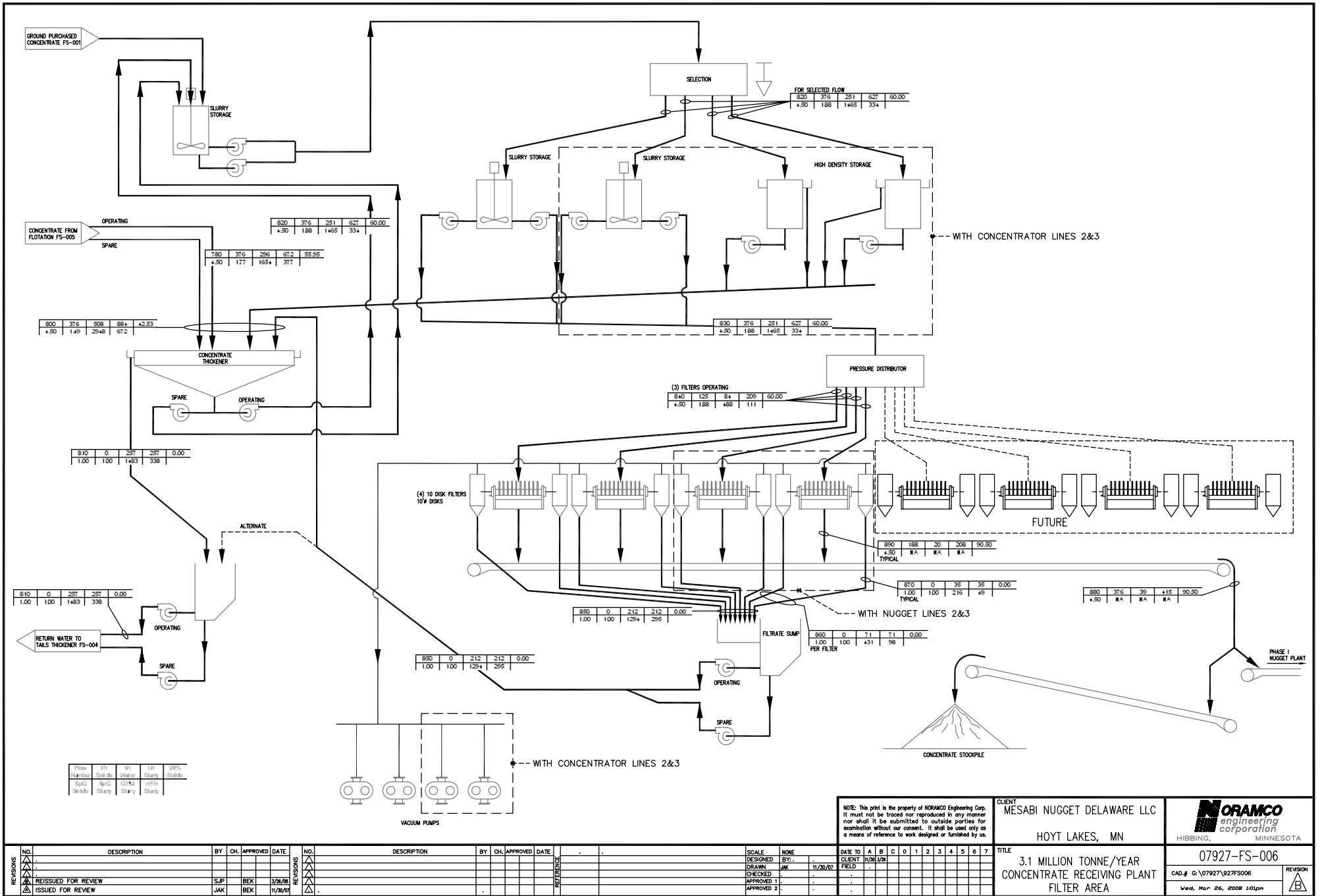


Figure 6-5 Crusher/Concentrator Flow Sheet 5 of 5