

ATTACHMENT A

Minnesota Department of Natural Resources

Marsh Lake Ecosystem Restoration Project

Project Maps (June, 2016)

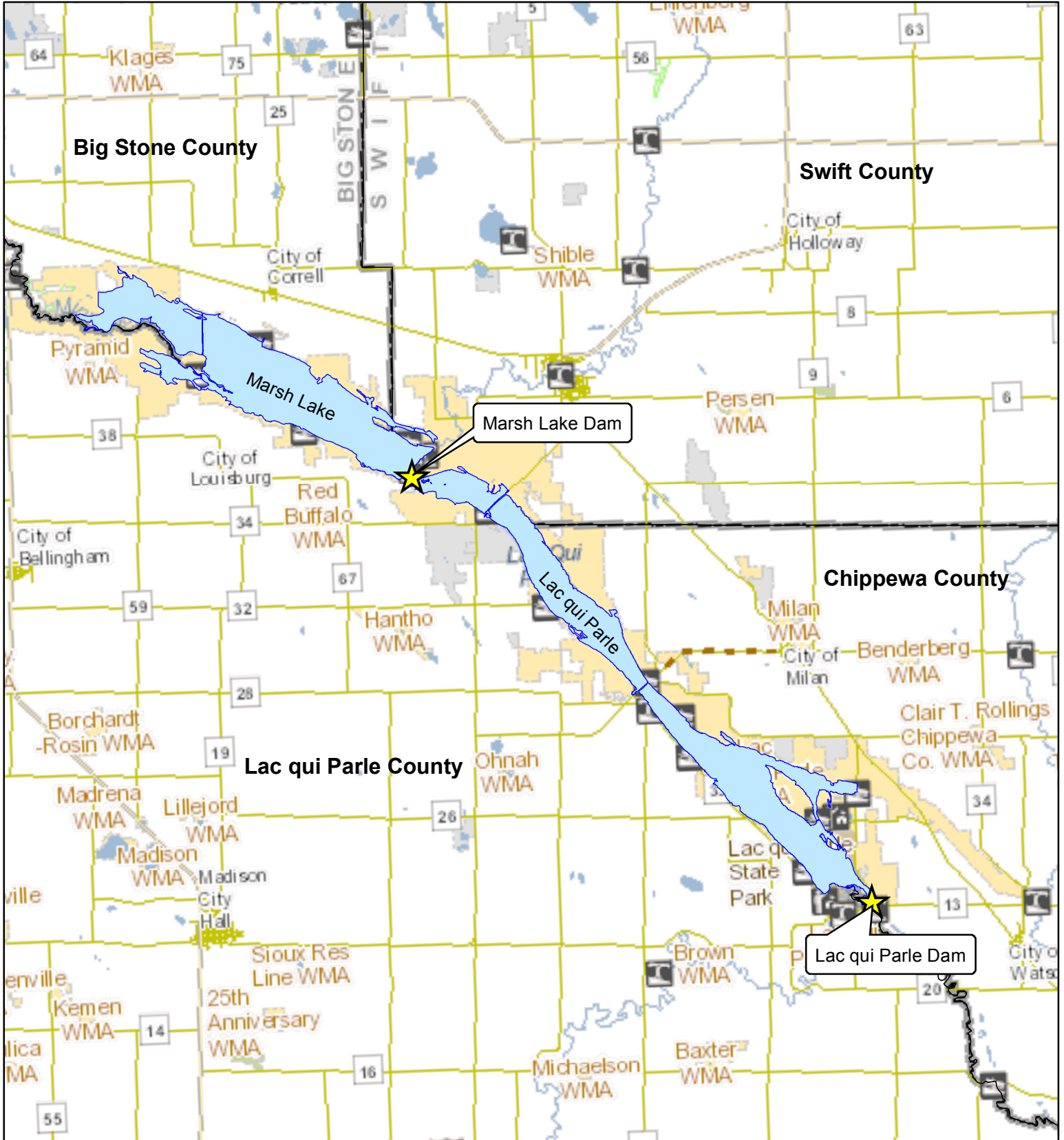


Marsh Lake Ecosystem Restoration Project

Project Location Map

Marsh Lake Division of Waters# 06000100

Map 1



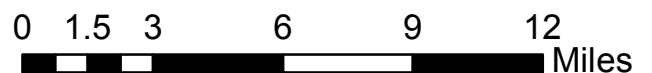
UPPER MINNESOTA RIVER
WATERSHED DISTRICT

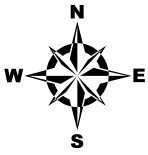


US Army Corps
of Engineers®



 Lac qui Parle WMA



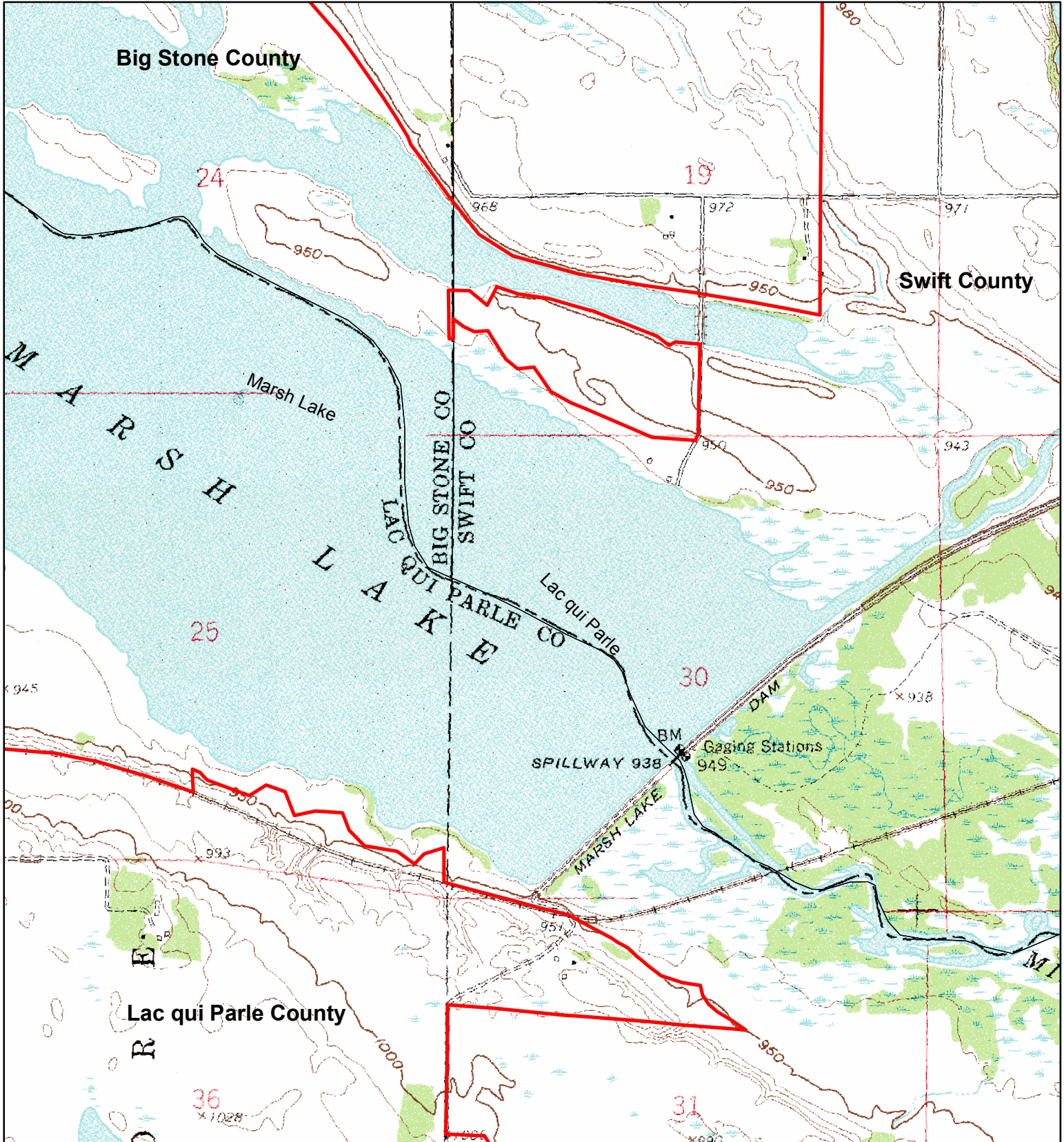


Marsh Lake Ecosystem Restoration Project

Marsh Lake U.S. Geological Survey 1:24,000

Marsh Lake Division of Waters# 06000100

Map 2




UPPER MINNESOTA RIVER
WATERSHED DISTRICT

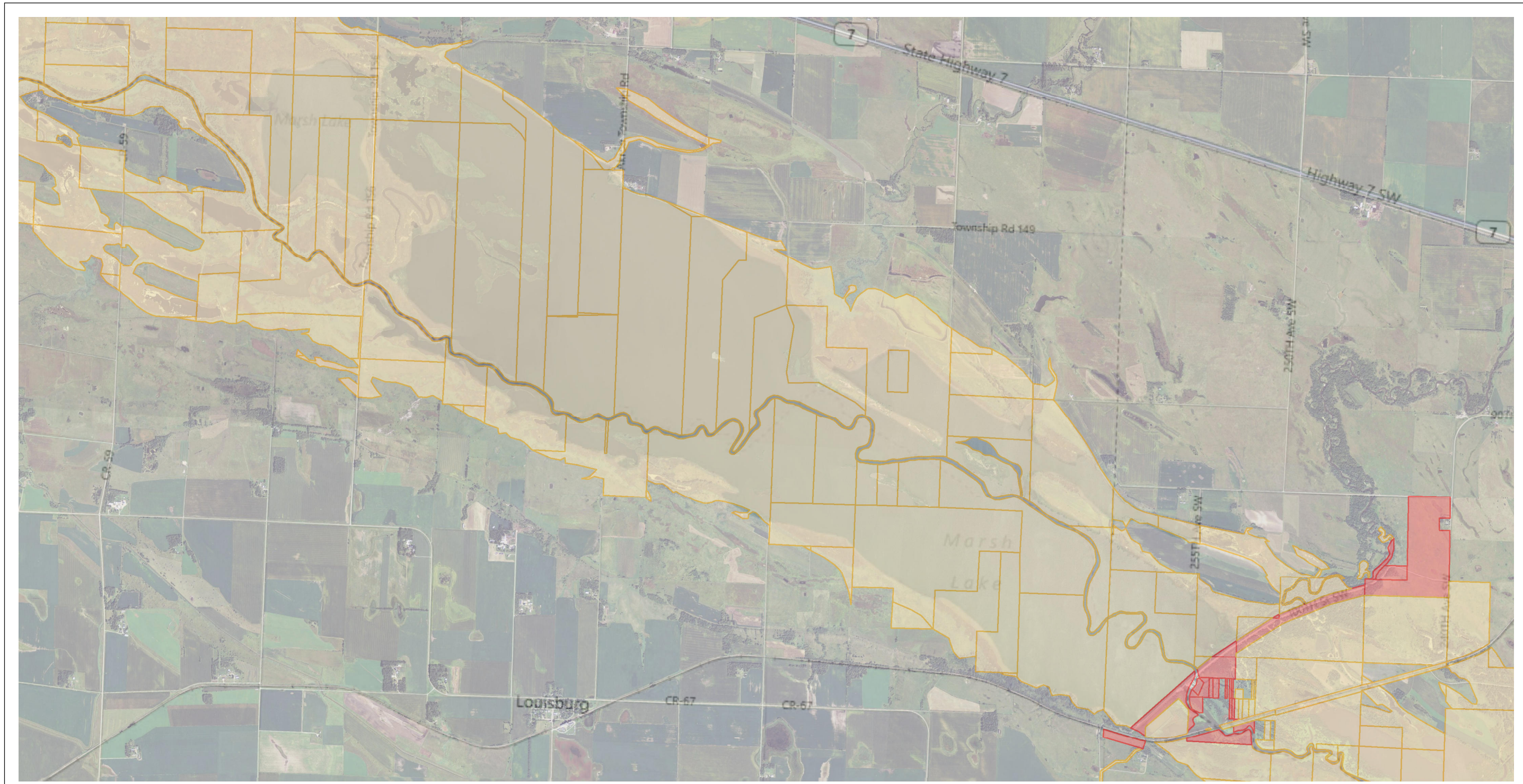


US Army Corps
of Engineers®



 Lac qui Parle WMA

0 0.125 0.25 0.5 0.75 1
 Miles



Marsh Lake, MN

Base Image: Bing Maps Road with 2010 USDA NAIP Imagery

0 1 2 Miles

USACE ACQUIRED ESTATE

- Easement
- Fee



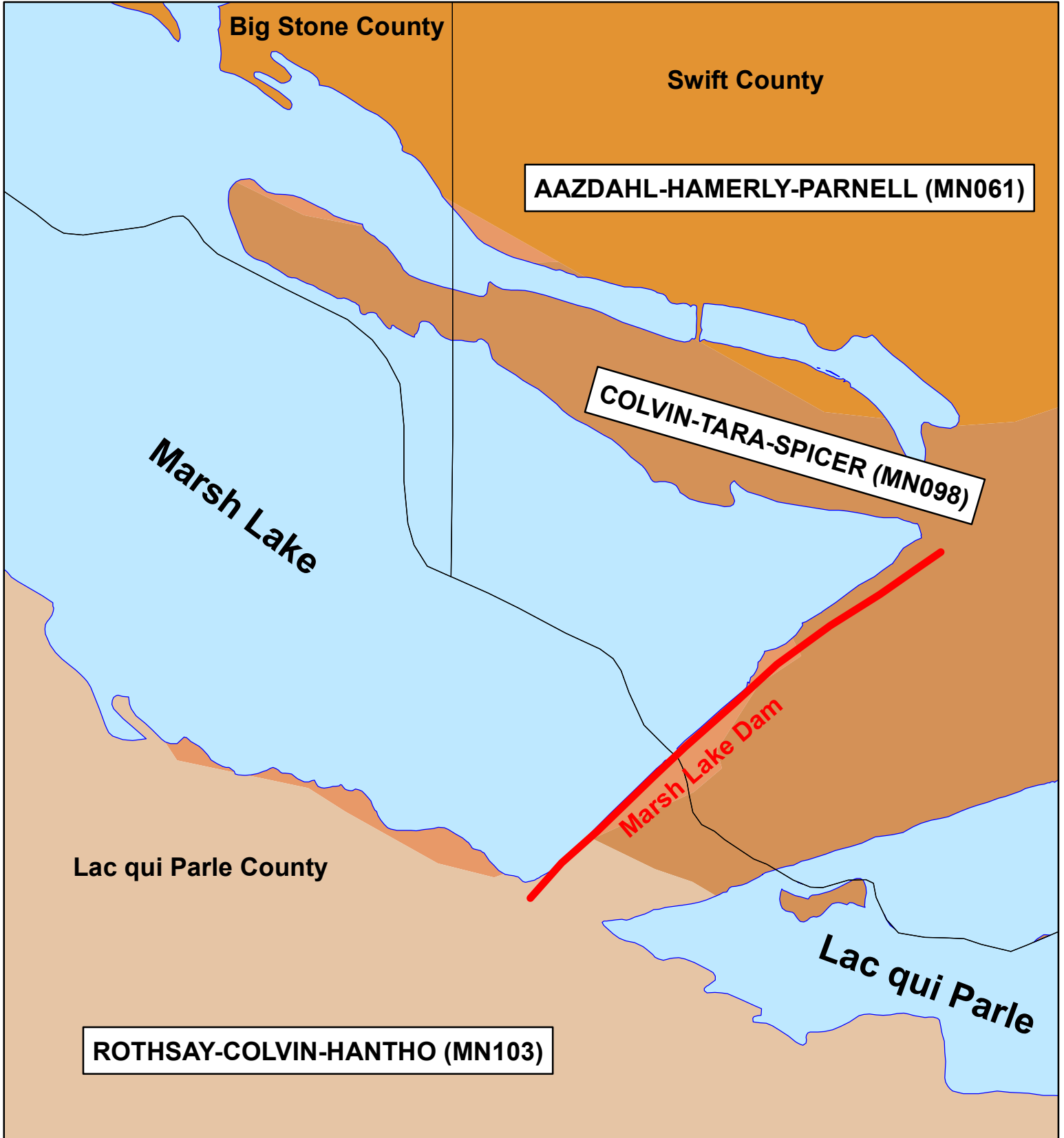


Marsh Lake Ecosystem Restoration Project

Marsh Lake Soils

Marsh Lake Division of Waters# 06000100

Map 4



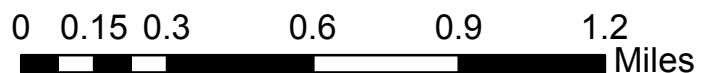
UPPER MINNESOTA RIVER
WATERSHED DISTRICT

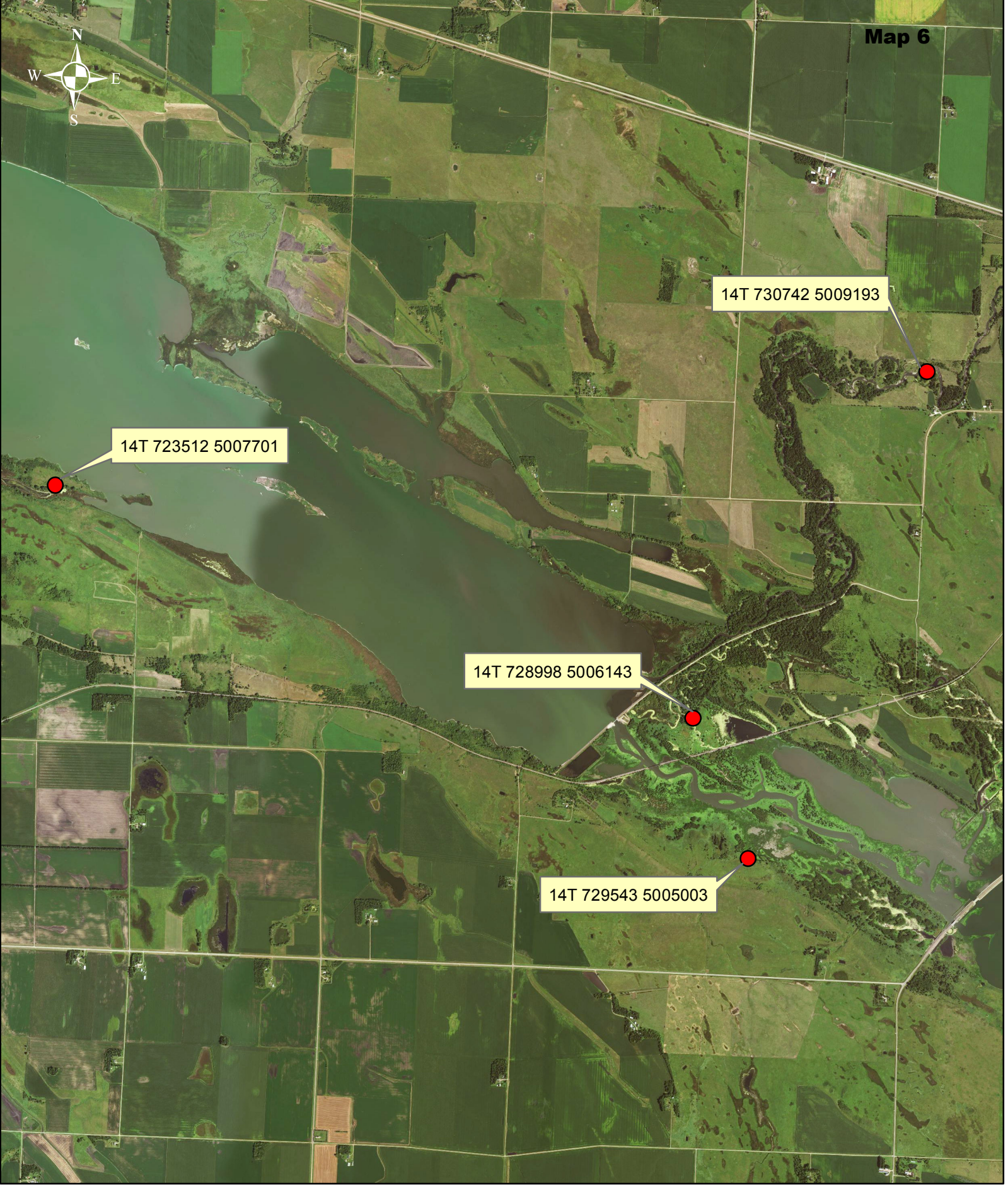


US Army Corps
of Engineers®



MNDNR





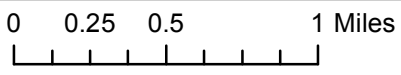
14T 723512 5007701

14T 730742 5009193

14T 728998 5006143

14T 729543 5005003

Marsh Lake-LQP Lake Active Eagle Nest Location - March 2016



255th Ave SW

240th Ave SW

PROPOSED EMBANKMENT ROADWAY

Restored Agricultural Field

7.28 acre borrow site

10.0 acre food plot

REALIGN ROADWAY

PROPOSED EMBANKMENT ROADWAY

100th St SW

PARKING LOT

OBLITERATE ROAD CORE

REMOVE ROAD CORE

CHANNEL PLUG

HISTORIC CHANNEL RESTORATION

FISH PASSAGE STRUCTURE

PARKING LOT

