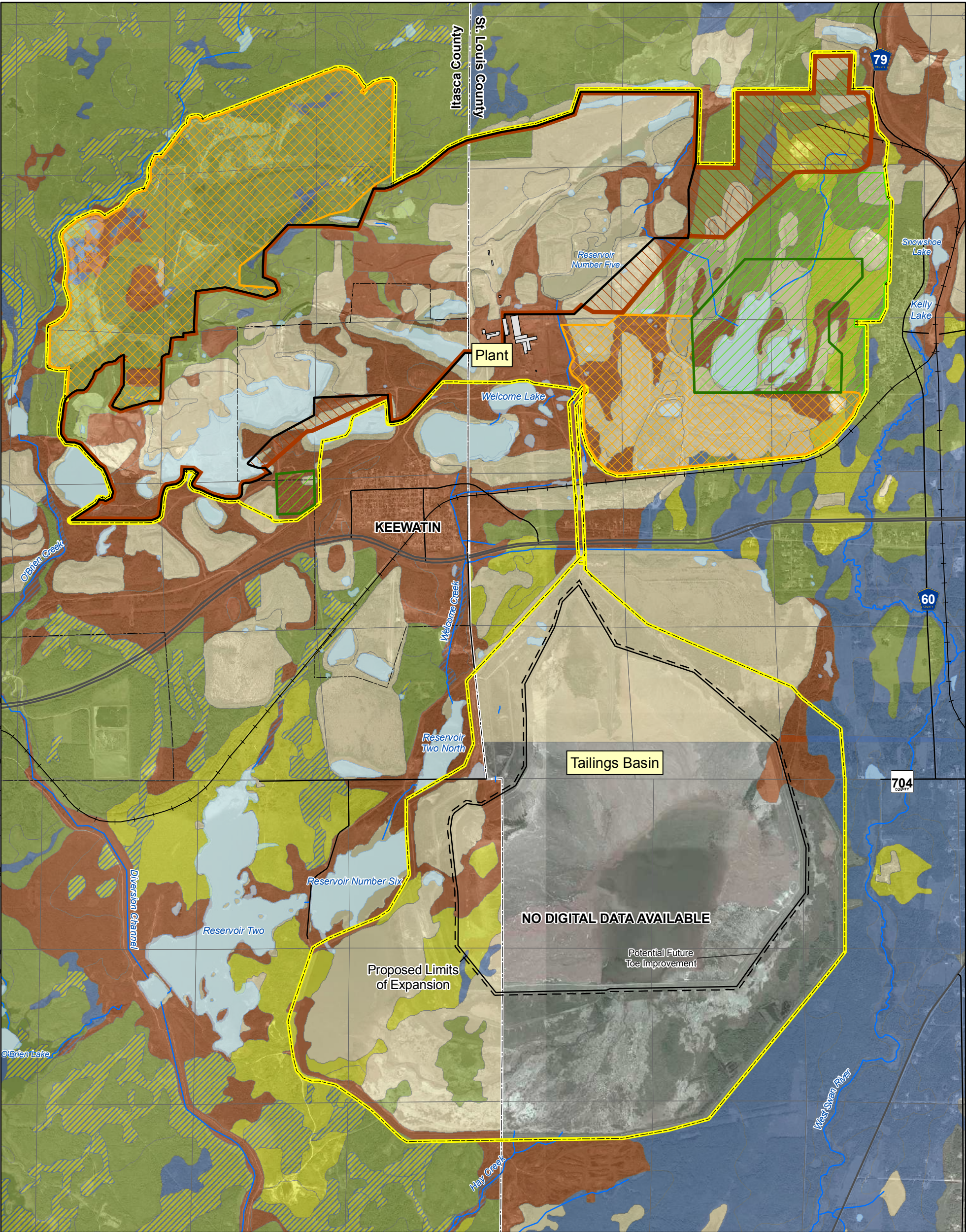


Barr Footer: Date: 8/28/2008 12:09:05 PM File: I:\Client\Keetac\2331335 Line 1\Workorders\Scoping EAW\Maps\Report\Map\EA\ 11x17\Figure 19_1 Soils Map.mxd User: arm2



Expansion Project

- Facility Boundary
- Total Final Pit Limit
- Proposed Pit Limit Expansion
- Current Permit to Mine Pit Limit
- Existing Permitted Stockpile Area Outside Pit
- Area Evaluated for Additional Stockpiles
- Proposed Stockpile Footprint
- Streams
- Lakes/Ponds

Soil Survey Data-Hydrologic Group

- A - Soils having high infiltration rates
- A - Drained Conditions/D - Undrained Conditions
- B - Soils having moderate infiltration rates
- B - Drained Conditions/D - Undrained Conditions
- C - Soils having slow infiltration rates
- C - Drained Conditions/D - Undrained Conditions
- D - Soils having very slow infiltration rates
- Not Classified

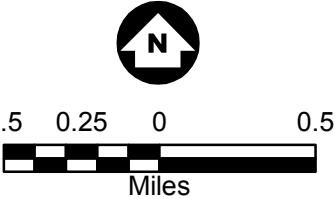


Figure 19-1
SOIL TYPES
Keetac Project
US Steel Corp.
Keewatin, Minnesota