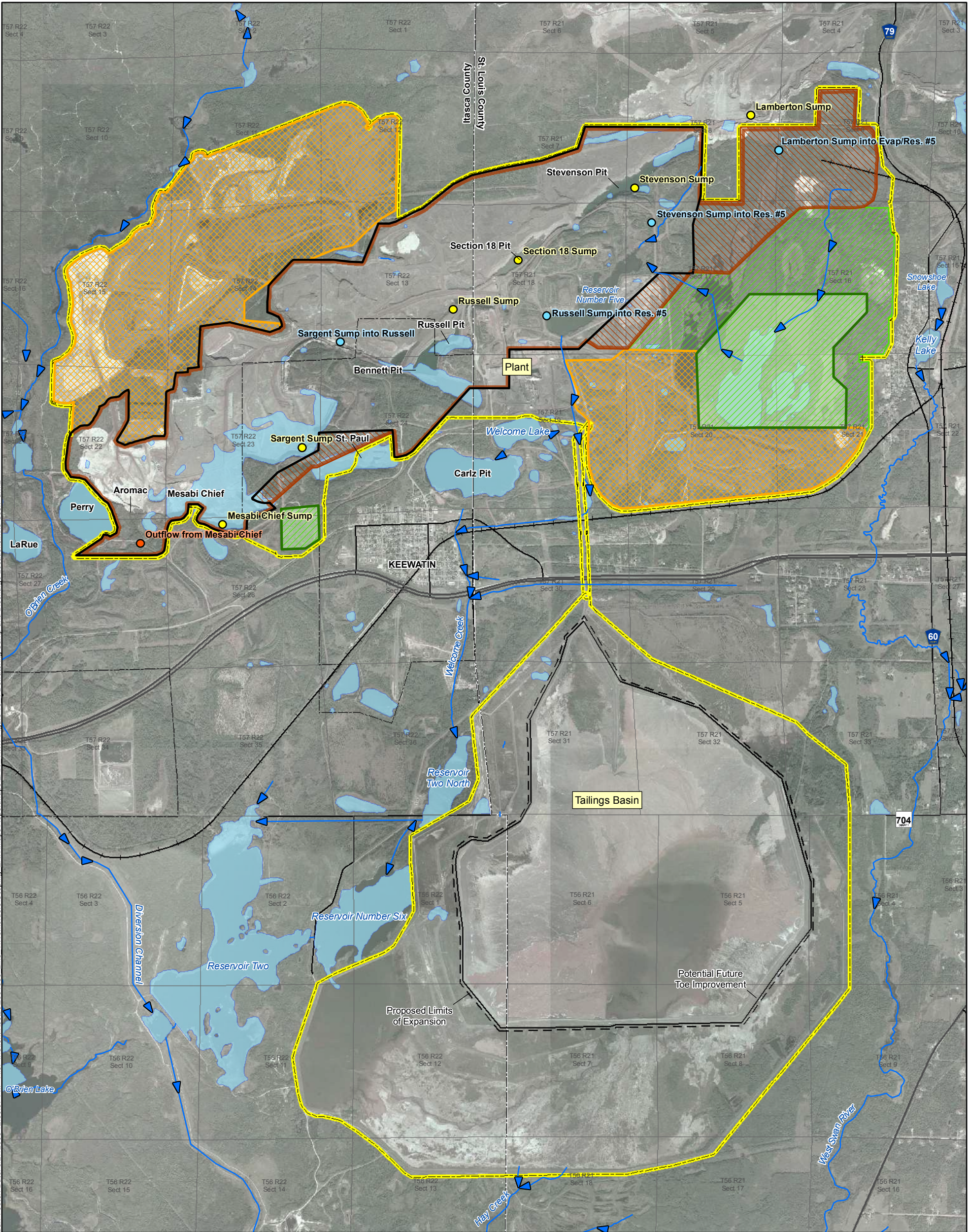


Barr Footer: Date: 8/27/2008 12:59:57 PM File: I:\Client\Keewatn\Scoping EAW\Maps\Report\Map\11x17\Figure 13.1 Dewatering Sump and Discharge Locations.mxd User: am2



Expansion Project

- Facility Boundary
- Total Final Pit Limit
- Proposed Pit Limit Expansion
- Current Permit to Mine Pit Limit
- Existing Permitted Stockpile Area Outside Pit
- Proposed Stockpile Footprint
- Area Evaluated for Additional Stockpiles

Flowlines

Water Discharge Locations

- Discharge Point
- Pumping Position
- Pumping Position Discharge Point
- City Boundary
- County Boundary
- Sections
- NHD Waterbodies

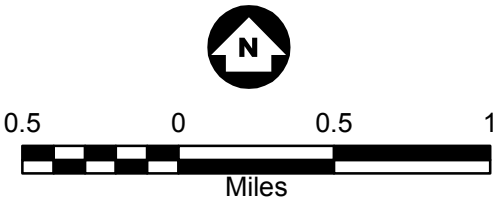
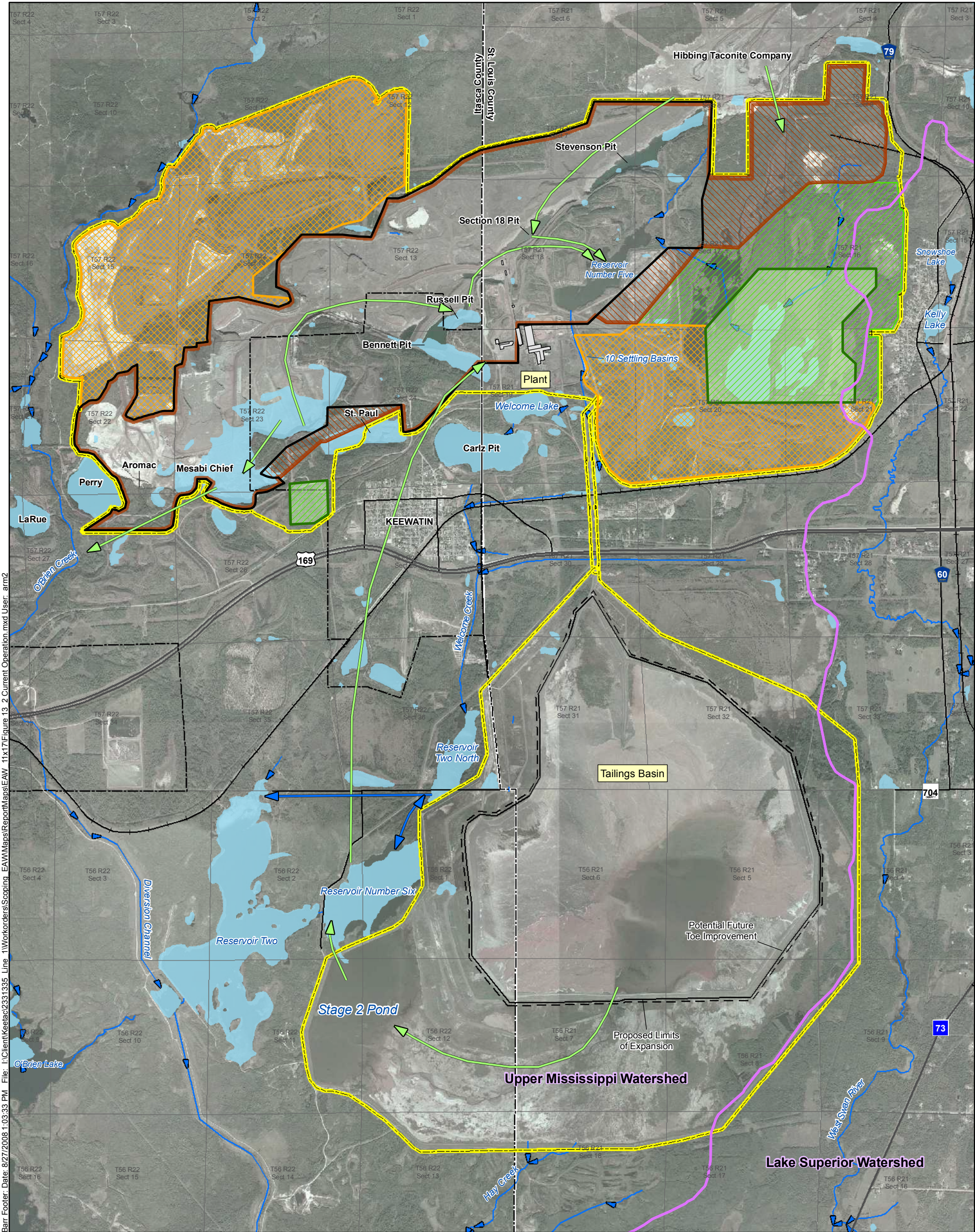


Figure 13-1
DEWATERING SUMP AND
DISCHARGE LOCATIONS
US Steel Corp.
Keewatin, MN



Barr Footer: Date: 8/27/2008 1:03:33 PM File: I:\Client\Keetac\2331335 Line 1\Workers\Scoping EAW\Maps\Report\Map\EA\ 11x17\Figure 13-2 Current Operation.mxd User: arm2

Expansion Project

- Facility Boundary
- Total Final Pit Limit
- Proposed Pit Limit Expansion
- Current Permit to Mine Pit Limit
- Existing Permitted Stockpile Area Outside Pit
- Area Evaluated for Additional Stockpiles
- Proposed Stockpile Footprint

- Current Operation Flows
- Flowlines
- Major Watersheds
- Waterbodies

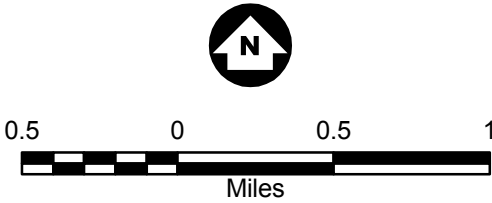


Figure 13-2
CURRENT FACILITY
WATER FLOW
Keetac Project
US Steel Corp.
Keewatin, MN

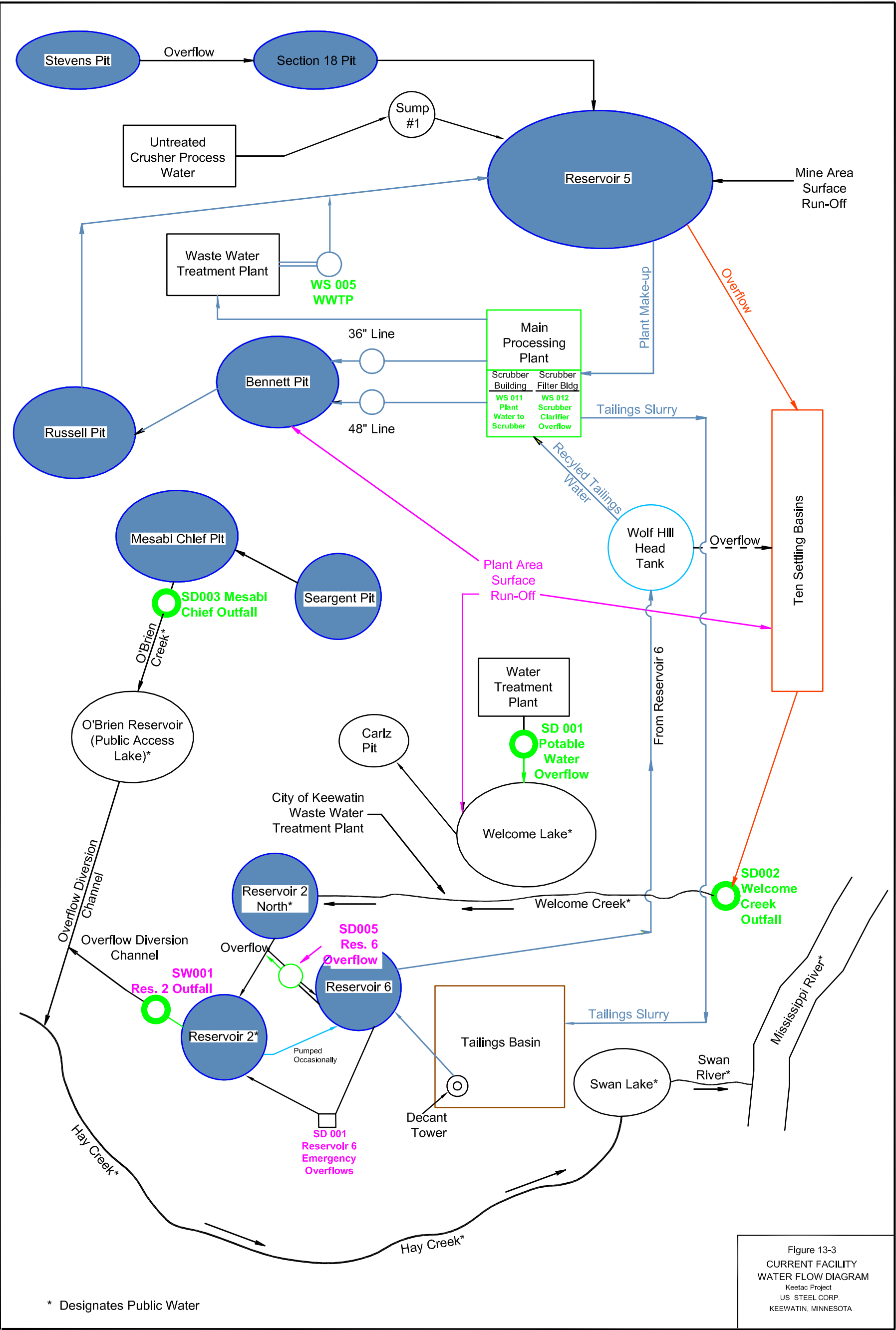
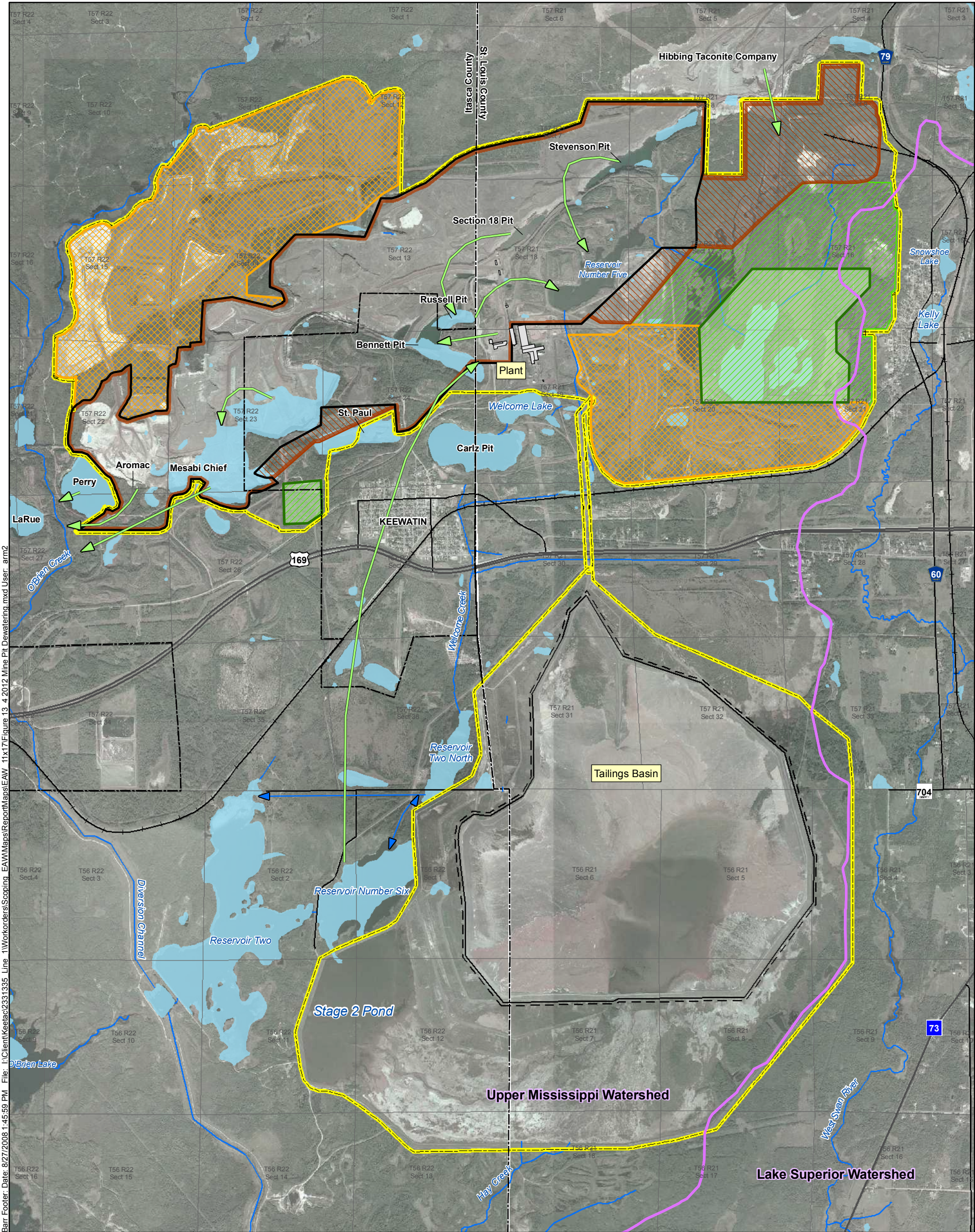


Figure 13-3
CURRENT FACILITY
WATER FLOW DIAGRAM
Keetac Project
US STEEL CORP.
KEEWATIN, MINNESOTA



Barr Footer: Date: 8/27/2008 1:45:59 PM File: I:\Client\Keewac\2331335 Line 1\Workers\Scoping_EAW\Maps\Report\Map\EA\ 11x17\Figure 13-4 2012 Mine Pit Dewatering.mxd User: am2

Expansion Project

- Facility Boundary
- Total Final Pit Limit
- Proposed Pit Limit Expansion
- Current Permit to Mine Pit Limit
- Existing Permitted Stockpile Area Outside Pit
- Area Evaluated for Additional Stockpiles
- Proposed Stockpile Footprint

- 2012 Dewatering Flow
- Ditch Flow Direction
- Major Watersheds
- City Boundary
- County Boundary
- Sections
- Streams
- Waterbodies

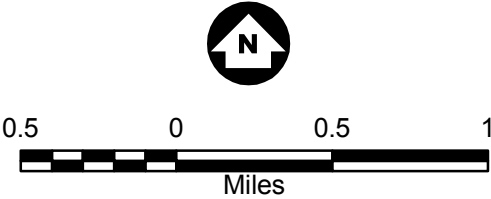
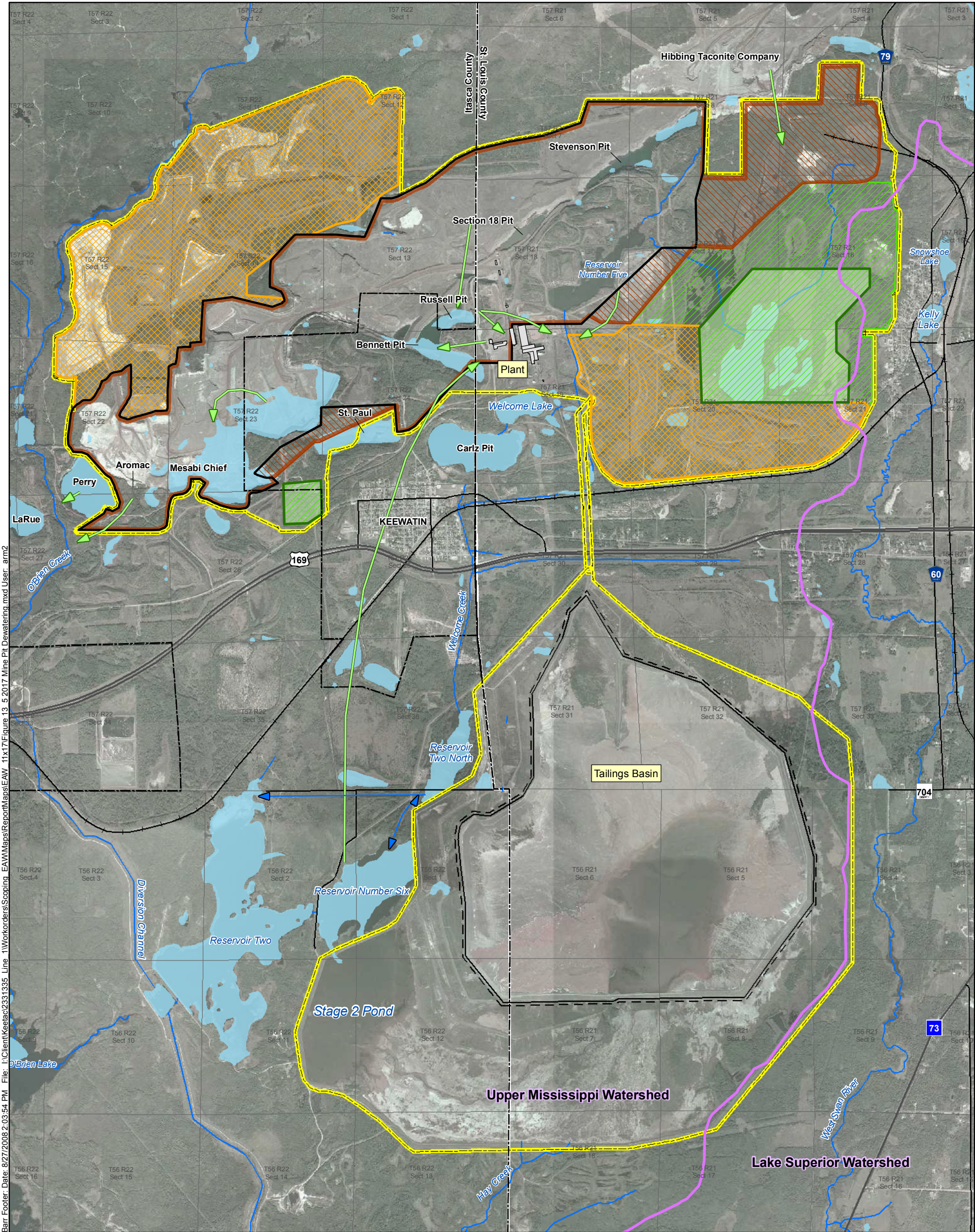


Figure 13-4
2012 MINE PIT DEWATERING
Keetac Project
US Steel Corp.
Keewatin, MN



Barr Footer: Date: 8/27/2008 2:03:54 PM File: I:\Client\Keetac\2331335 Line 1\Workers\Scoping_EAW\Maps\Report\Map\EA\ 11x17\Figure 13-5 2017 Mine Pit Dewatering.mxd User: am2

Expansion Project

- Facility Boundary
- Total Final Pit Limit
- Proposed Pit Limit Expansion
- Current Permit to Mine Pit Limit
- Existing Permitted Stockpile Area Outside Pit
- Area Evaluated for Additional Stockpiles
- Proposed Stockpile Footprint

- 2017 Dewatering Flow
- Ditch Flow Direction
- Major Watersheds
- Streams
- Waterbodies

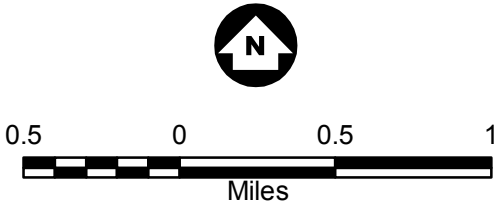
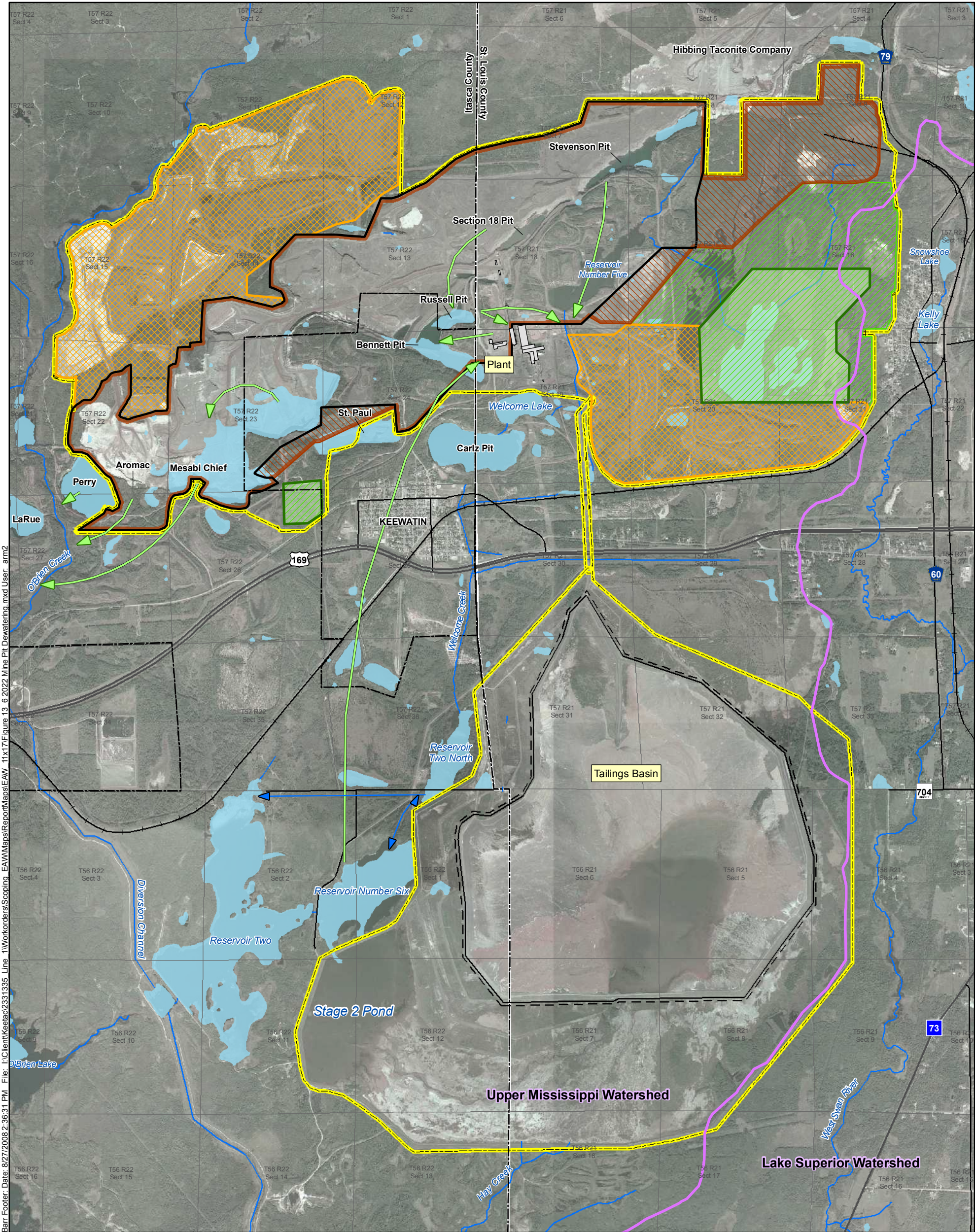


Figure 13-5
2017 MINE PIT DEWATERING
Keetac Project
US Steel Corp.
Keewatin, MN



Barr Footer: Date: 8/27/2008 2:36:31 PM File: I:\Client\Keetac\2331335 Line 1\Workers\Scoping_EAW\Maps\Report\Map\EA\ 11x17\Figure 13-6 2022 Mine Pit Dewatering.mxd User: am2

- Expansion Project**
 - Facility Boundary
 - Total Final Pit Limit
 - Proposed Pit Limit Expansion
 - Current Permit to Mine Pit Limit
 - Existing Permitted Stockpile
 - Area Outside Pit
 - Area Evaluated for Additional Stockpiles
 - Proposed Stockpile Footprint

- 2022 Dewatering Flow
 - Ditch Flow Direction
 - Major Watersheds
 - Streams
 - Waterbodies

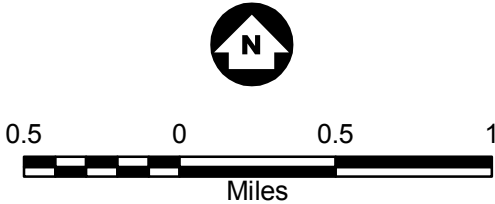
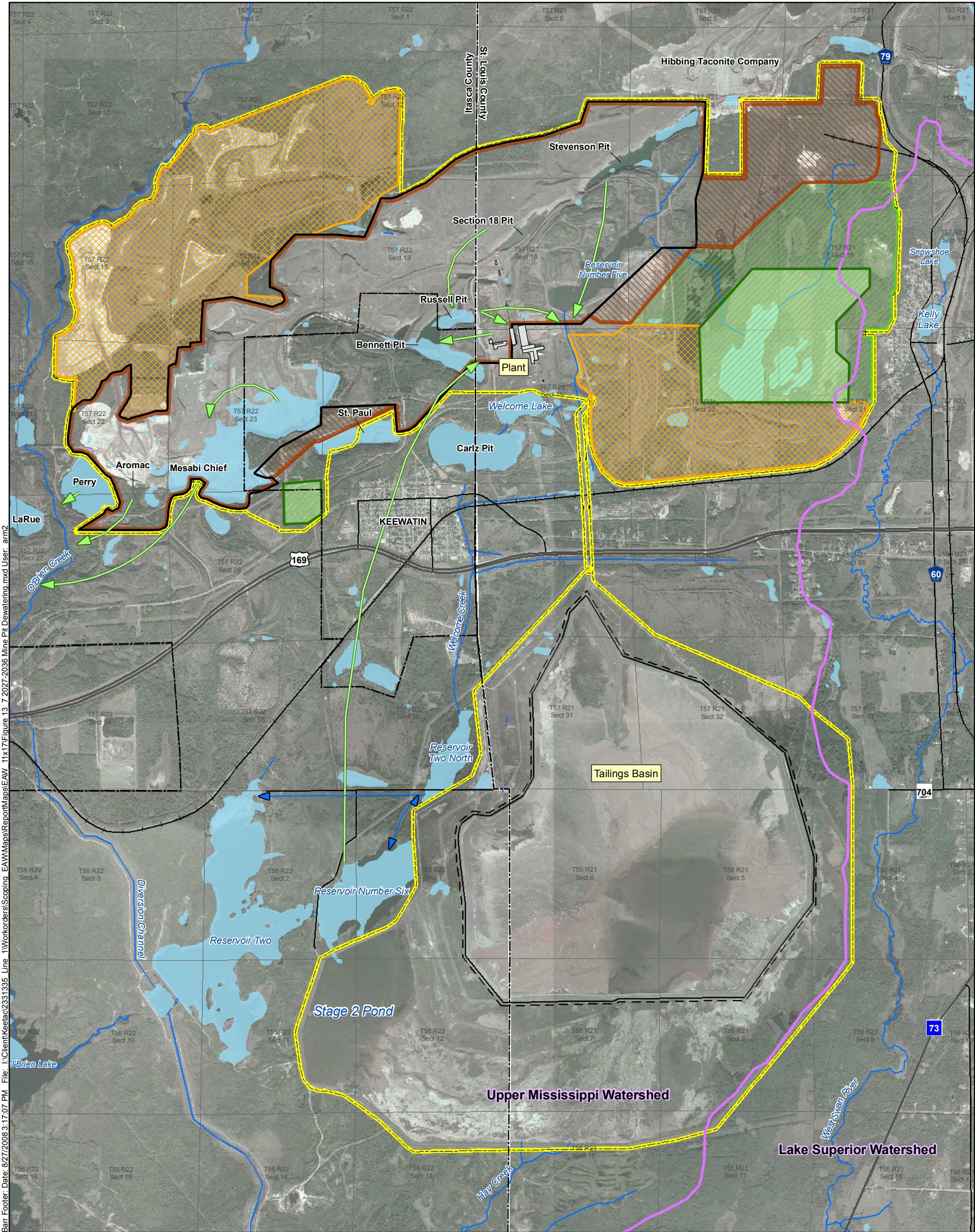


Figure 13-6
2022 MINE PIT DEWATERING
Keetac Project
US Steel Corp.
Keewatin, MN



Barr Footer: Date: 8/27/2008 3:17:07 PM File: J:\Client\Keetac\231335 Line 1\Workers\Scoping_EAW\Maps\Report\Map\EA\ 11x17\Figure 13-7 2027-2036 Mine Pit Dewatering.mxd User: arm2

Expansion Project

- Facility Boundary
- Total Final Pit Limit
- Proposed Pit Limit Expansion
- Current Permit to Mine Pit Limit
- Existing Permitted Stockpile
- Area Outside Pit
- Area Evaluated for Additional Stockpiles
- Proposed Stockpile Footprint

- 2027-2036 Dewatering Flow
- Ditch Flow Direction
- Major Watersheds
- Streams
- Waterbodies

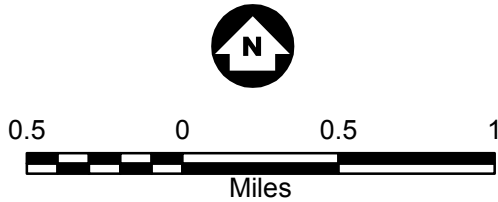
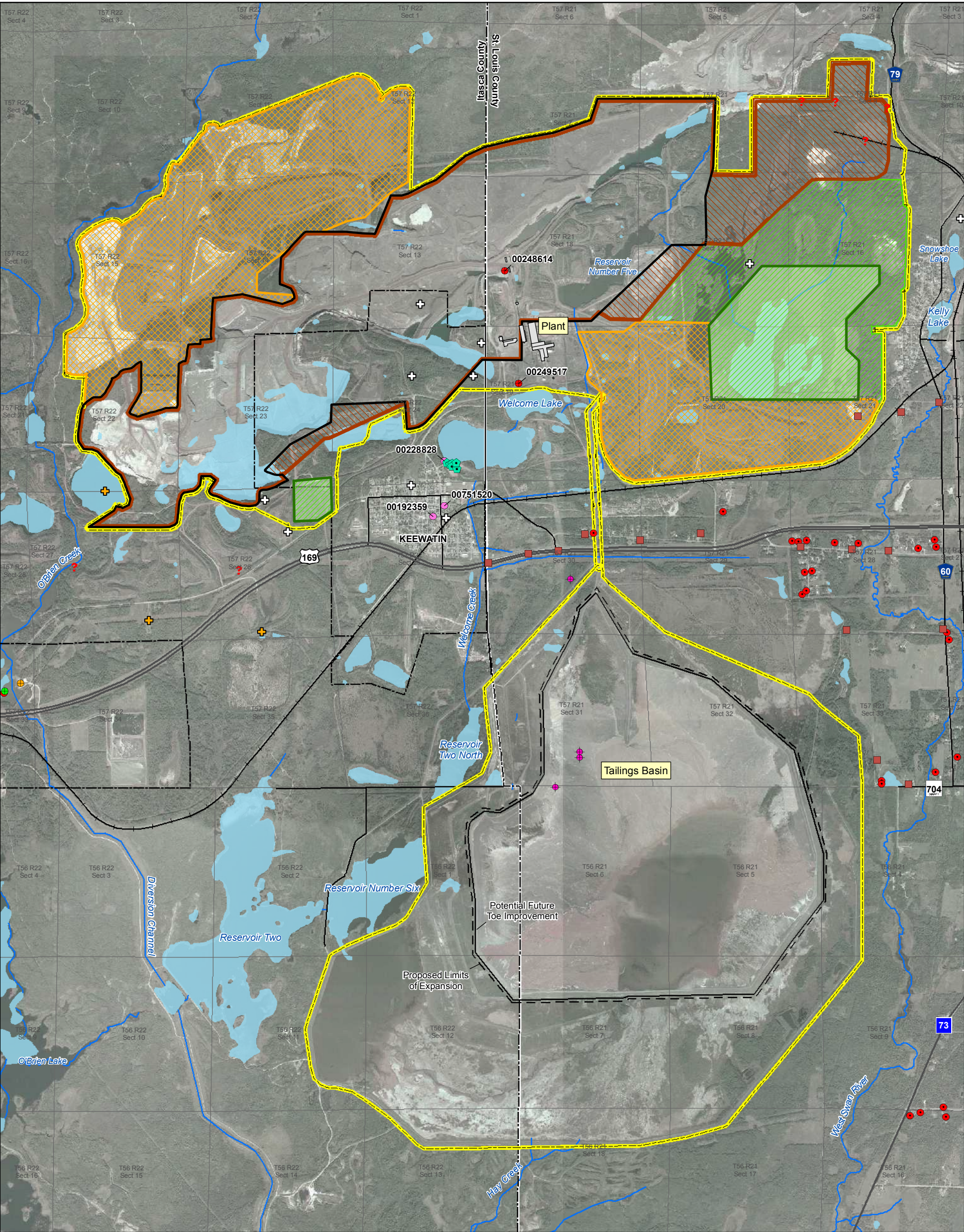


Figure 13-7
2027-2036
MINE PIT DEWATERING
Keetac Project
US Steel Corp.
Keewatin, MN



Expansion Project

- Facility Boundary
- Total Final Pit Limit
- Proposed Pit Limit Expansion
- Current Permit to Mine Pit Limit
- Existing Permitted Stockpile
- Area Outside Pit
- Area Evaluated for Additional Stockpiles
- Proposed Stockpile Footprint
- Streams
- Waterbodies

County Well Index

- Community Supply (municipal), Active
- Community Supply (municipal), Status Unknown
- Domestic, Active

- Domestic, Inactive
- Domestic, Sealed
- Industrial, Active
- Monitor well, Active
- Other, Active
- Public Supply/non-comm.-non-transient, Active
- Public Supply/non-comm.-transient,
- Public Supply/non-comm.-transient, Active
- Public Supply/non-community, Active
- Scientific Investigation
- Scientific Investigation, Status Unknown
- Test well, Status Inknown
- Test well, Active
- Test well, Status Unknown
- Unknown

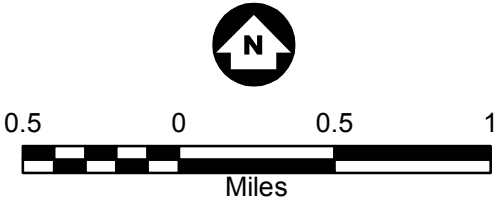
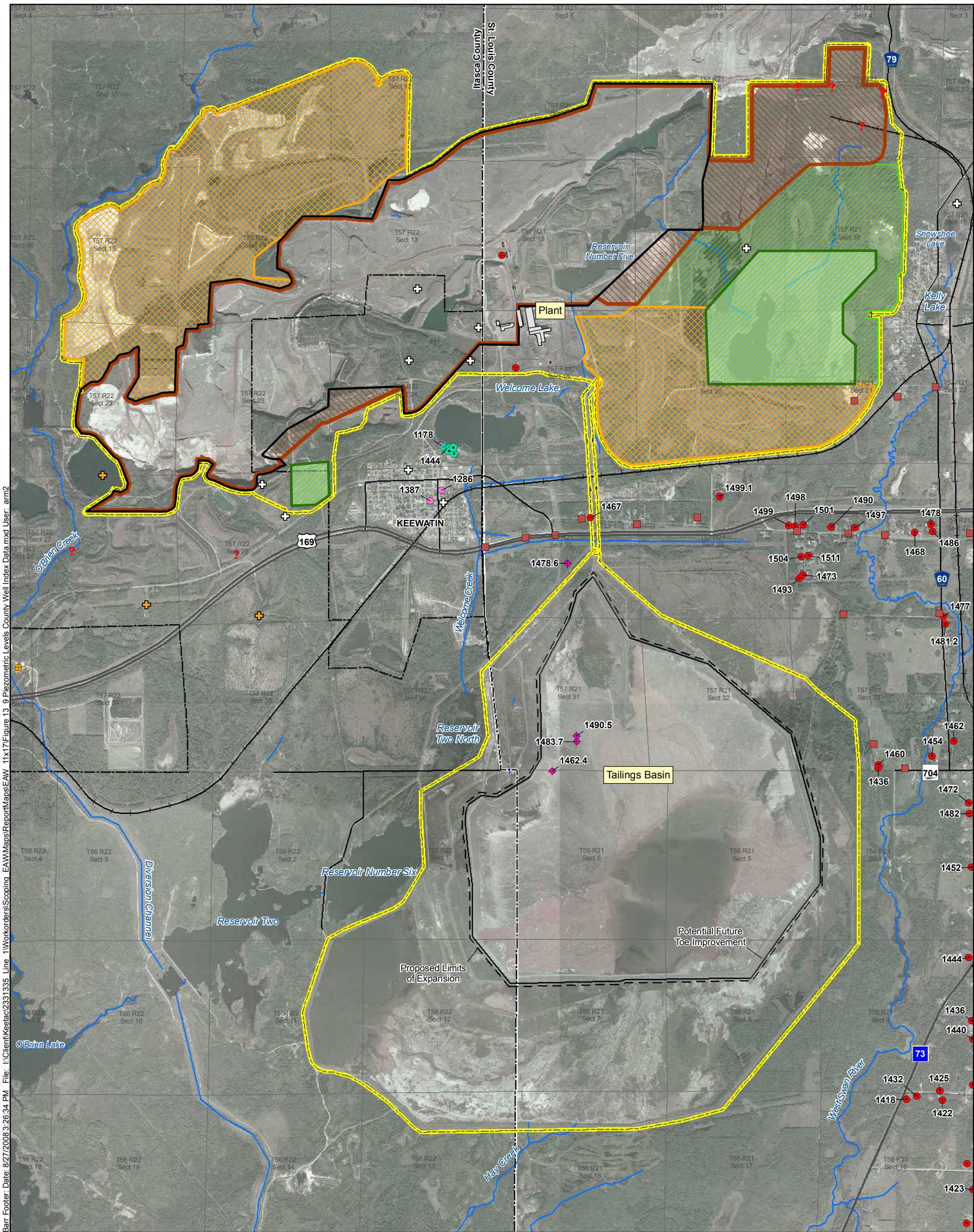


Figure 13-8
WELL LOCATION MAP
COUNTY WELL INDEX DATA
Keetac Project
US Steel Corp.
Keewatin, MN



Barr Footer: Date: 8/27/2008 3:26:34 PM File: I:\Client\Keewatin\Scoping_EAM\Maps\Report\Map\EA\ 11x17\Figure 13-9 Piezometric Levels County Well Index Data.mxd User: arm2

Expansion Project

- Facility Boundary
- Total Final Pit Limit
- Proposed Pit Limit Expansion
- Current Permit to Mine Pit Limit
- Existing Permitted Stockpile
- Area Outside Pit
- Area Evaluated for Additional Stockpiles
- Proposed Stockpile Footprint
- Streams

County Well Index

- Community Supply (municipal), Active
- Community Supply (municipal), Status Unknown
- Domestic, Active
- Domestic, Inactive

- Domestic, Sealed
- Industrial, Active
- Monitor well, Active
- Other, Active
- Public Supply/non-comm.-non-transient, Active
- Public Supply/non-comm.-transient, Active
- Public Supply/non-comm.-transient, Active
- Public Supply/non-community, Active
- Scientific Investigation
- Scientific Investigation, Status Unknown
- Test well, Status Unknown
- Test well, Active
- Test well, Status Unknown
- Unknown

Figure 13-9
PIEZOMETRIC LEVELS
COUNTY WELL INDEX DATA
Keetac Project
US Steel Corp.
Keewatin, MN