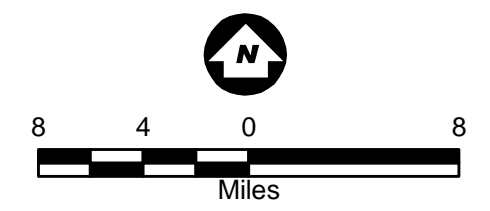
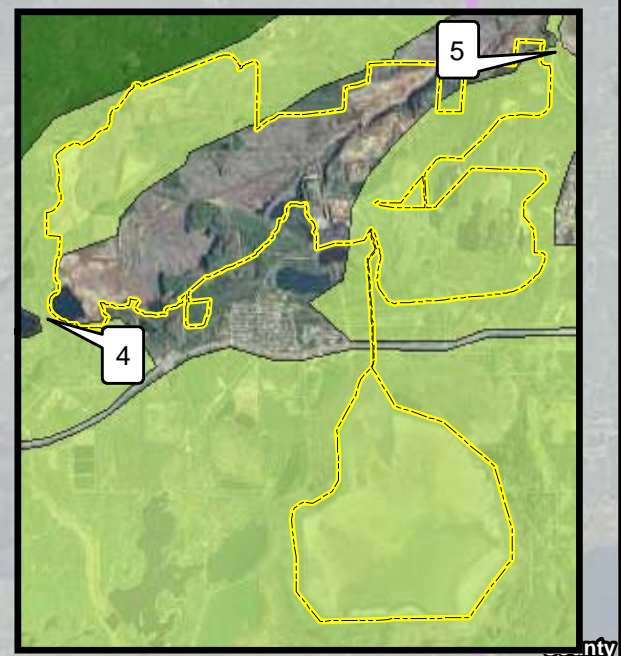




- Legend**
- Current and Proposed Keetac Footprint
  - Iron Range Study Area
  - County Boundary
  - High Quality Corridors
  - Moderate Quality Corridors



Source: USGS, Barr, LMIC, MNDNR, National Hydro Dataset, MPCA, Itasca County, EOR, St. Louis County, City of Hibbing, City of Nashauk, U.S. Steel, and Mn/DOT. 2008 Aerial Photograph



**Figure 5.6.4**  
**Existing Wildlife**  
**Travel Corridors**  
**U.S. Steel Keetac**  
**Keewatin, MN**



Mod: L:\1472\04\Maps\EIS Maps\Change 5 Cumulative Effects\Wildlife Travel Corridors.mxd  
 Cass County  
 Aitkin County