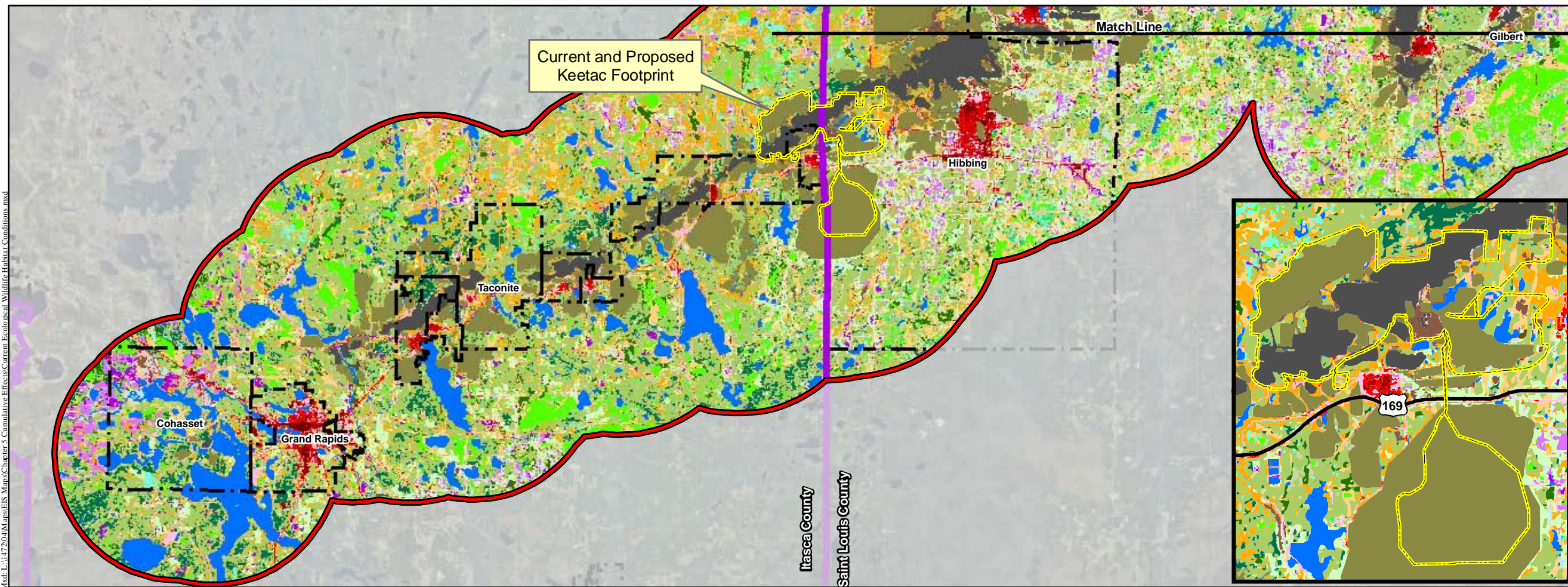


- Legend**
- Iron Range Study Area
  - Current and Proposed Keetac Footprint
  - County Boundary
  - City Boundary
- Existing Land Cover**
- 2007 DNR Mine Feature Shapefile - High Impact
  - 2007 DNR Mine Feature Shapefile - Moderate Impact
  - 20' buffer of MnDOT Railroads - Moderate Impact
  - USGS NLCD 2001 - Barren Land (Rock/Sand/Clay)
  - GAP-Barren Land
  - USGS NLCD 2001 - Developed High Intensity
  - USGS NLCD 2001 - Developed Medium Intensity
  - USGS NLCD 2001 - Developed Low Intensity
  - GAP-Mixed Development
  - USGS NLCD 2001 - Developed Open Space
  - Cropland
  - USGS NLCD 2001 - Cultivated Crops
  - Aquatic (Open Water)
  - Grassland
  - Lowland Conifer Forest
  - Lowland Conifer-Deciduous mix
  - Lowland Deciduous Forest
  - Lowland Shrub
  - Marsh
  - Aspen/White Birch
  - Pine
  - Upland Conifer Forest
  - Upland Conifer-Deciduous mix
  - Upland Deciduous Forest
  - Upland Shrub



Source: USGS, Barr, LMIC, MNDNR, National Hydro Dataset, MPCA, Itasca County, St. Louis County, City of Hibbing, City of Nashauk, U.S. Steel, and Mn/DOT. 2008 Aerial Photograph

**Figure 5.6.3**  
Current Ecological Wildlife  
Habitat Conditions  
U.S. Steel Keetac  
Keewatin, MN



X:\s\147204\Map\FIS Maps\Chapter 5 Cumulative Effects\Current Ecological Wildlife Habitat Conditions.mxd