

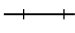


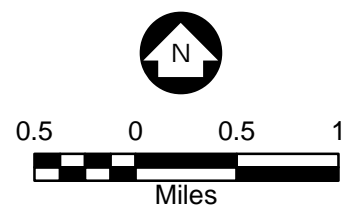


M:\d\1472\04\Maps\EIS\Maps\Chapter 1\Project Location Map.mxd

**Legend**

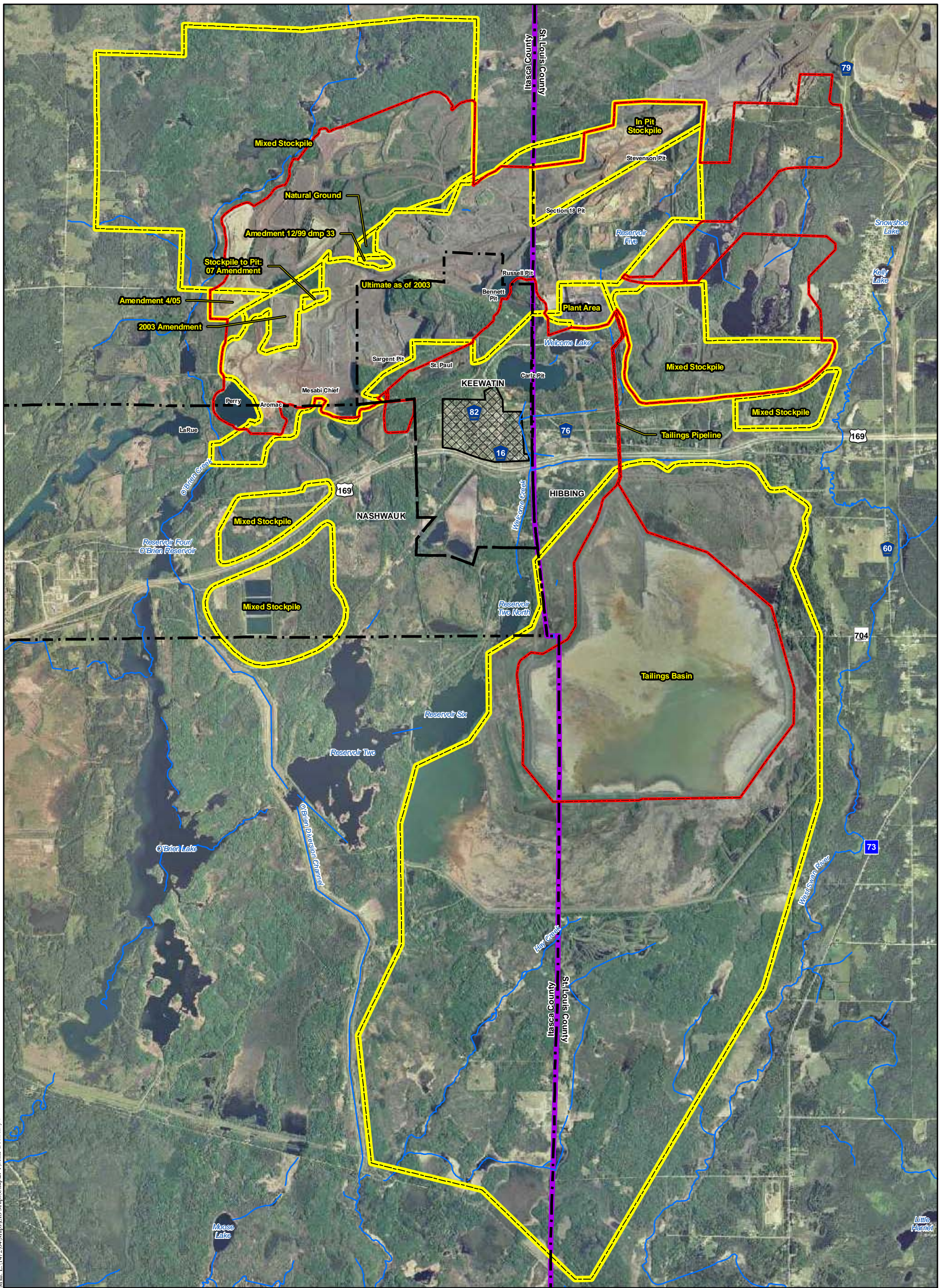
-  Keewatin Urban Development
-  City Boundary
-  Railroad
-  County Boundary
-  Current and Proposed Keetac Footprint



Source: USGS, Barr, LMIC, MNDNR, National Hydro Dataset, MPCA, Itasca County, St. Louis County, City of Hibbing, City of Nashwauk, U.S. Steel, and Mn/DOT. 2008 Aerial Photograph

Figure 1.1  
 Project Location Map  
 U.S. Steel Keetac  
 Keewatin, MN

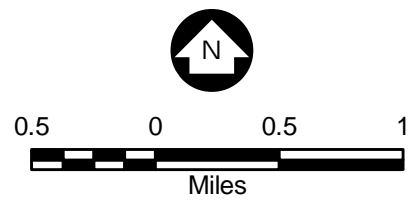




Mxd: L:\172\04\Maps\EIS Maps\Chapter 1\Mine Boundary in MNDNR Permit to Mine.mxd

**Legend**

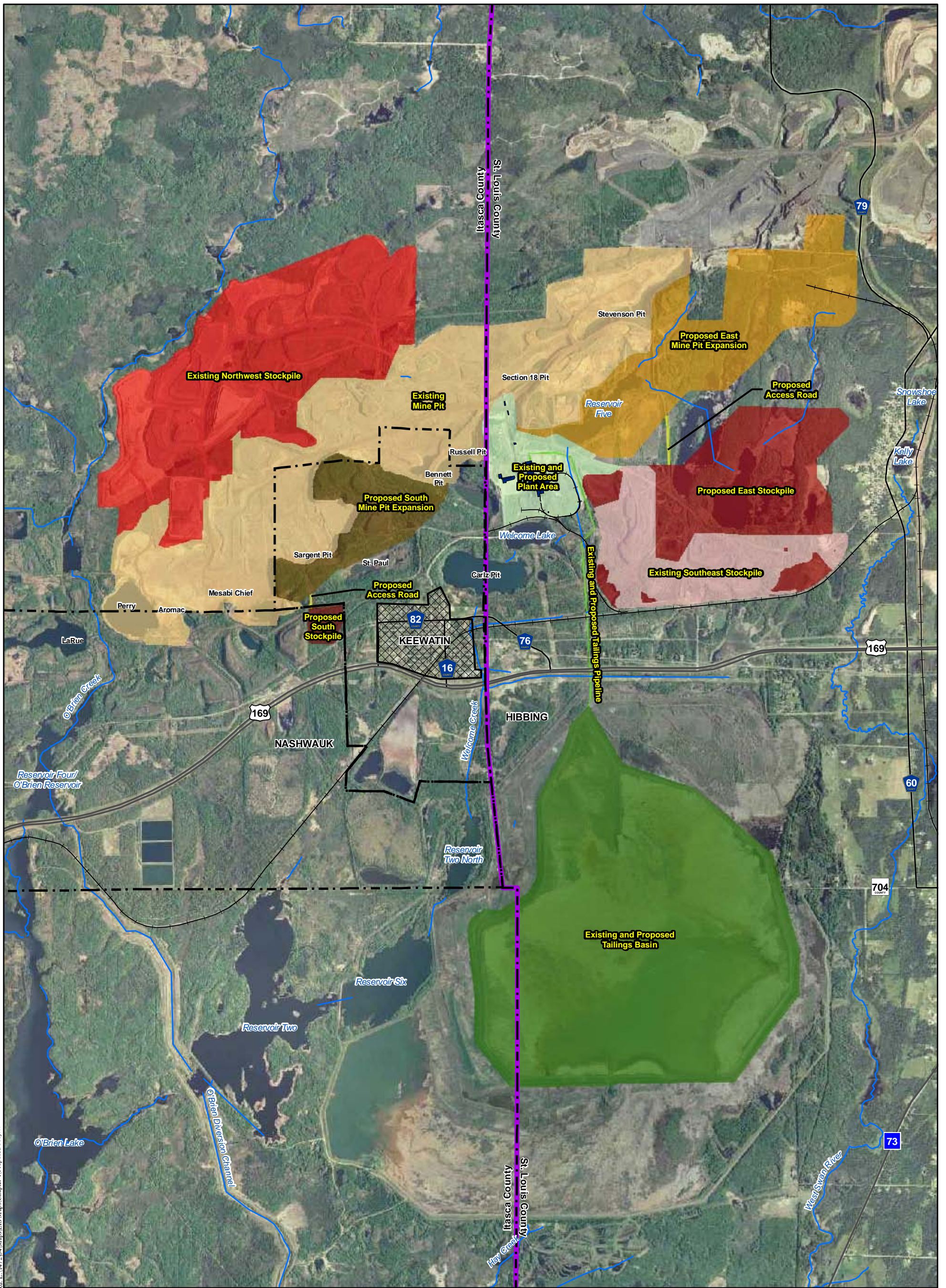
- Current MNDNR Permit to Mine Facilities Limit
- Current and Proposed Keetac Footprint
- City Boundary
- Keewatin Urban Development
- County Boundary
- Streams



Source: USGS, Barr, LMIC, MNDNR, National Hydro Dataset, MPCA, Itasca County, St. Louis County, City of Hibbing, City of Nashauk, U.S. Steel, and Mn/DOT. 2008 Aerial Photograph

Figure 1.2  
Comparison of Current and Proposed Keetac Footprint and Current MNDNR Permit to Mine Facilities Limit  
U.S. Steel Keetac  
Keewatin, MN





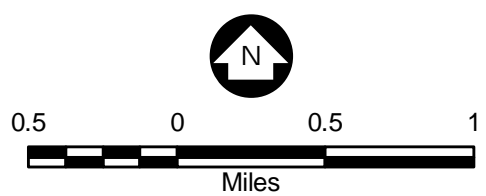
Map: L:\147204\Maps\EIS Maps\Chapter 1\Proposed Project Boundaries.mxd

**Legend**

**Project Areas**

- Existing Southeast Stockpile
- Existing Northwest Stockpile
- Proposed East Stockpile
- Proposed South Stockpile
- Proposed Stockpile Roads
- Existing Mine Pit
- Proposed East Mine Pit Expansion
- Proposed South Mine Pit Expansion
- Plant Area
- Tailings Basin
- Tailings Pipeline

- Keewatin Urban Development
- City Boundary
- County Boundary
- Streams
- Railroad



Source: USGS, Barr, LMIC, MNDNR, National Hydro Dataset, MPCA, Itasca County, St. Louis County, City of Hibbing, City of Nashauk, U.S. Steel, and Mn/DOT. 2008 Aerial Photograph

**Figure 1.3**  
Current and Proposed  
Keetac Footprint Areas  
U.S. Steel Keetac  
Keewatin, MN

