

Figure 1
Project Location

**Hawkes Peat
Mercil Site EAW**

Date: Friday, February 10, 2017



**DEPARTMENT OF
NATURAL RESOURCES**

Copyright 2017, State of Minnesota,
Department of Natural Resources (DNR).
Data was provided by the Minnesota DNR & Hawkes Co Inc.

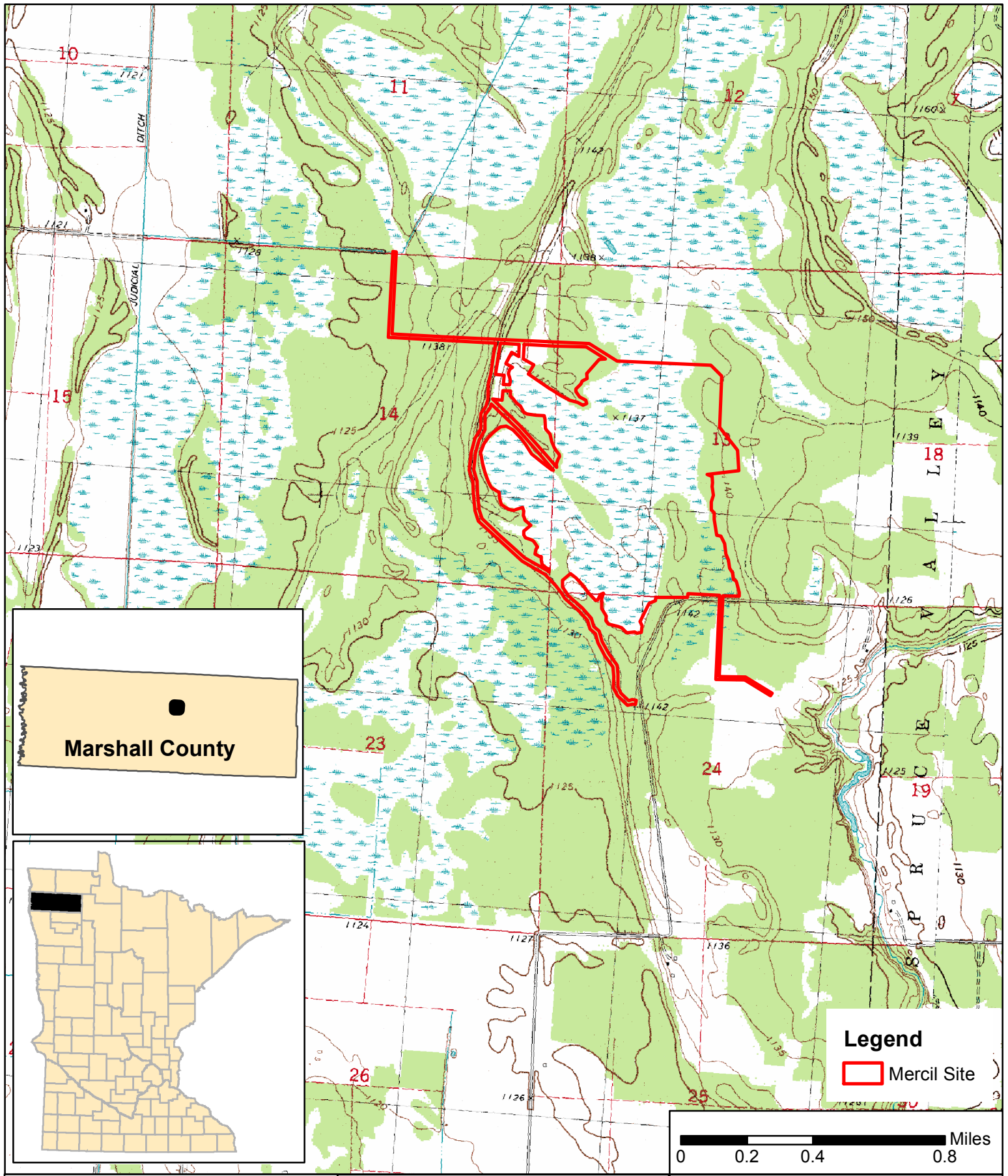


Figure 2
U.S. Geological
Survey Map

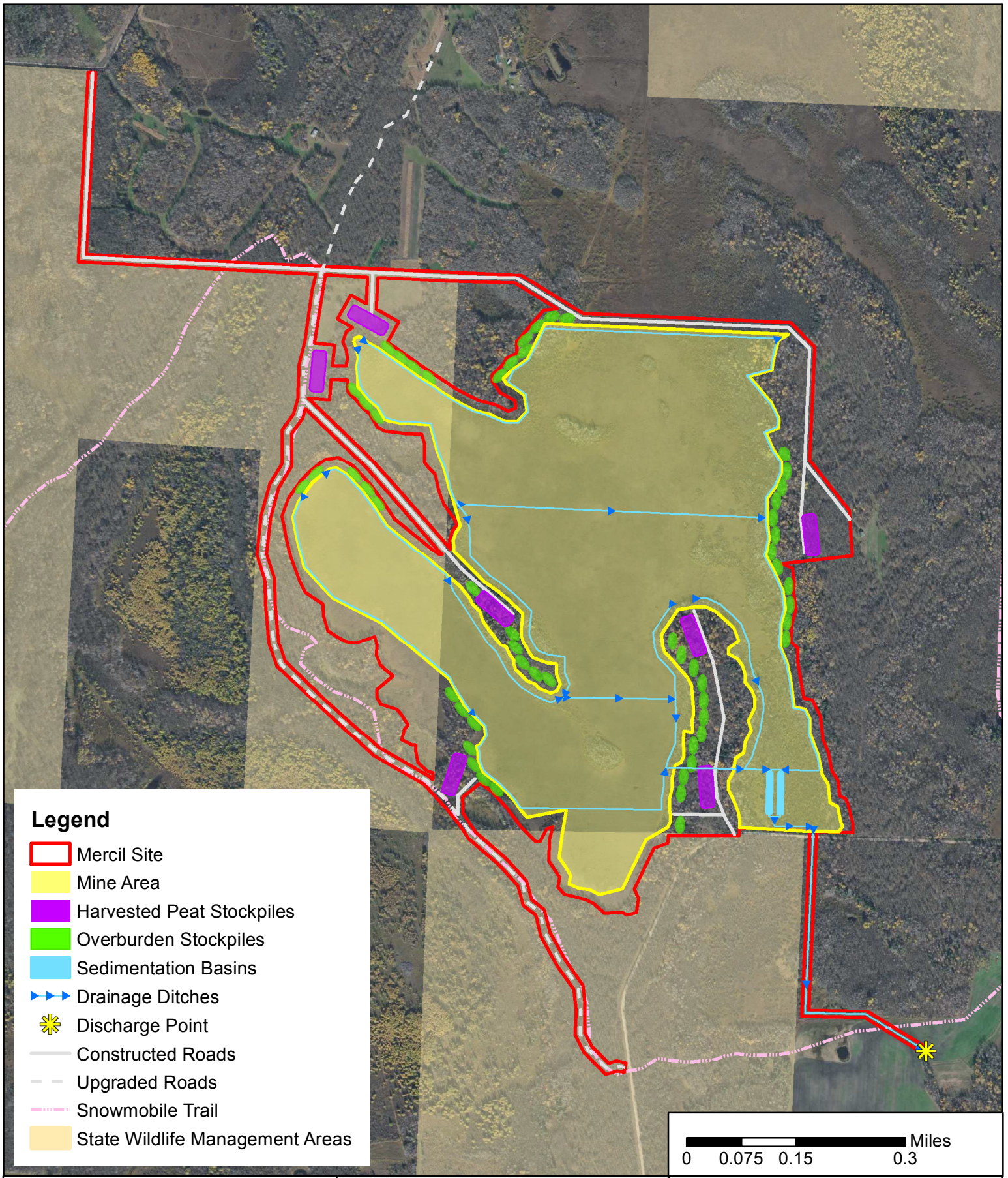
Hawkes Peat
Mercil Site EAW
 Date: Monday, February 13, 2017

Legend
 Mercil Site

0 0.2 0.4 0.8 Miles

m
 DEPARTMENT OF
 NATURAL RESOURCES

Copyright 2017, State of Minnesota,
 Department of Natural Resources (DNR).
 Data was provided by the Minnesota DNR & Hawkes Co Inc.



Legend

- Mercil Site
- Mine Area
- Harvested Peat Stockpiles
- Overburden Stockpiles
- ▶▶ Drainage Ditches
- ✱ Discharge Point
- Constructed Roads
- Upgraded Roads
- Snowmobile Trail
- State Wildlife Management Areas

0 0.075 0.15 0.3 Miles

Figure 3
Project Features

Hawkes Peat
Mercil Site EAW

Date: Friday, March 31, 2017



DEPARTMENT OF
NATURAL RESOURCES

Copyright 2017, State of Minnesota,
Department of Natural Resources (DNR).
Data was provided by the Minnesota DNR & Hawkes Co Inc.



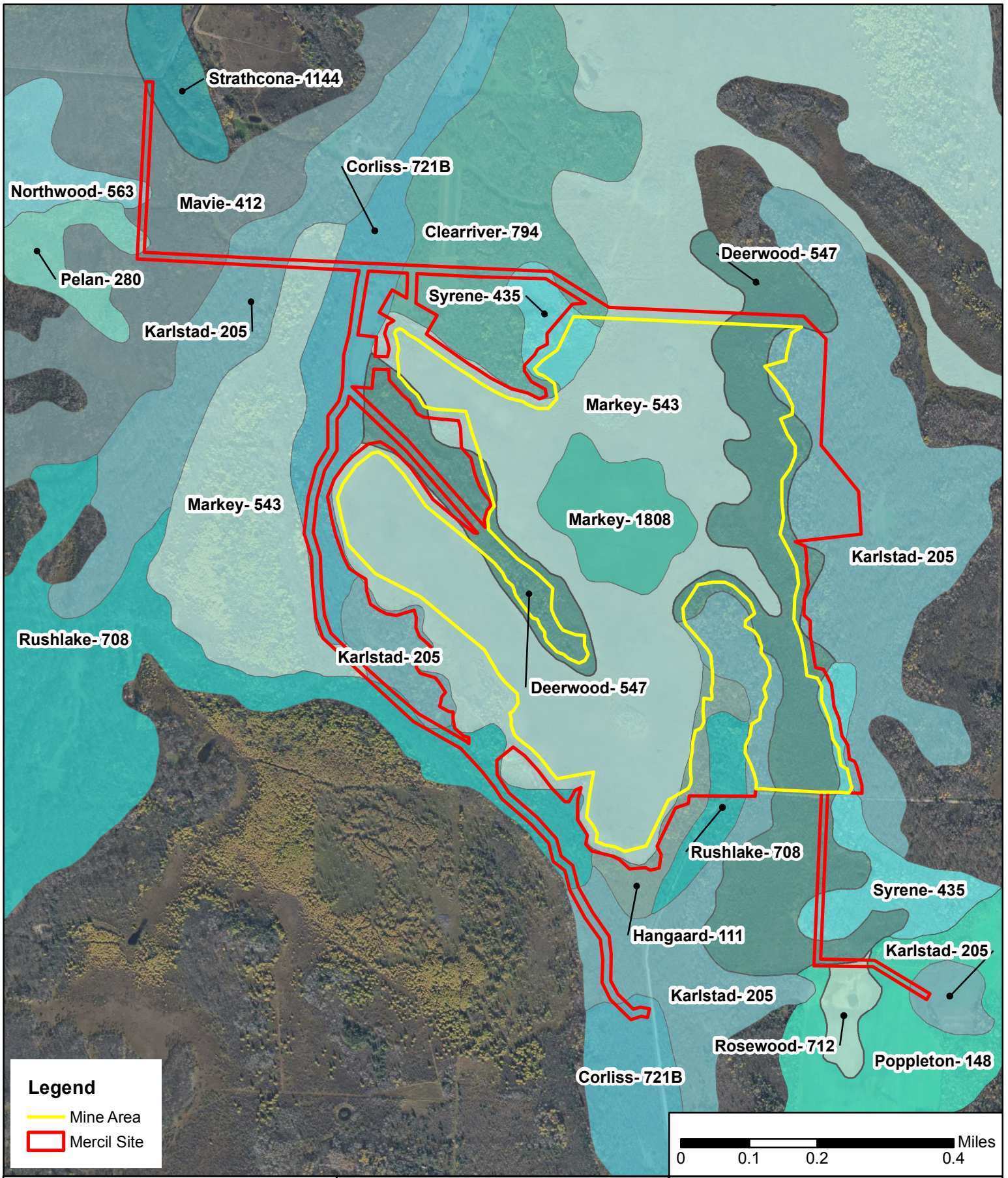


Figure 4
Soil Map

Hawkes Peat
Mercil Site EAW

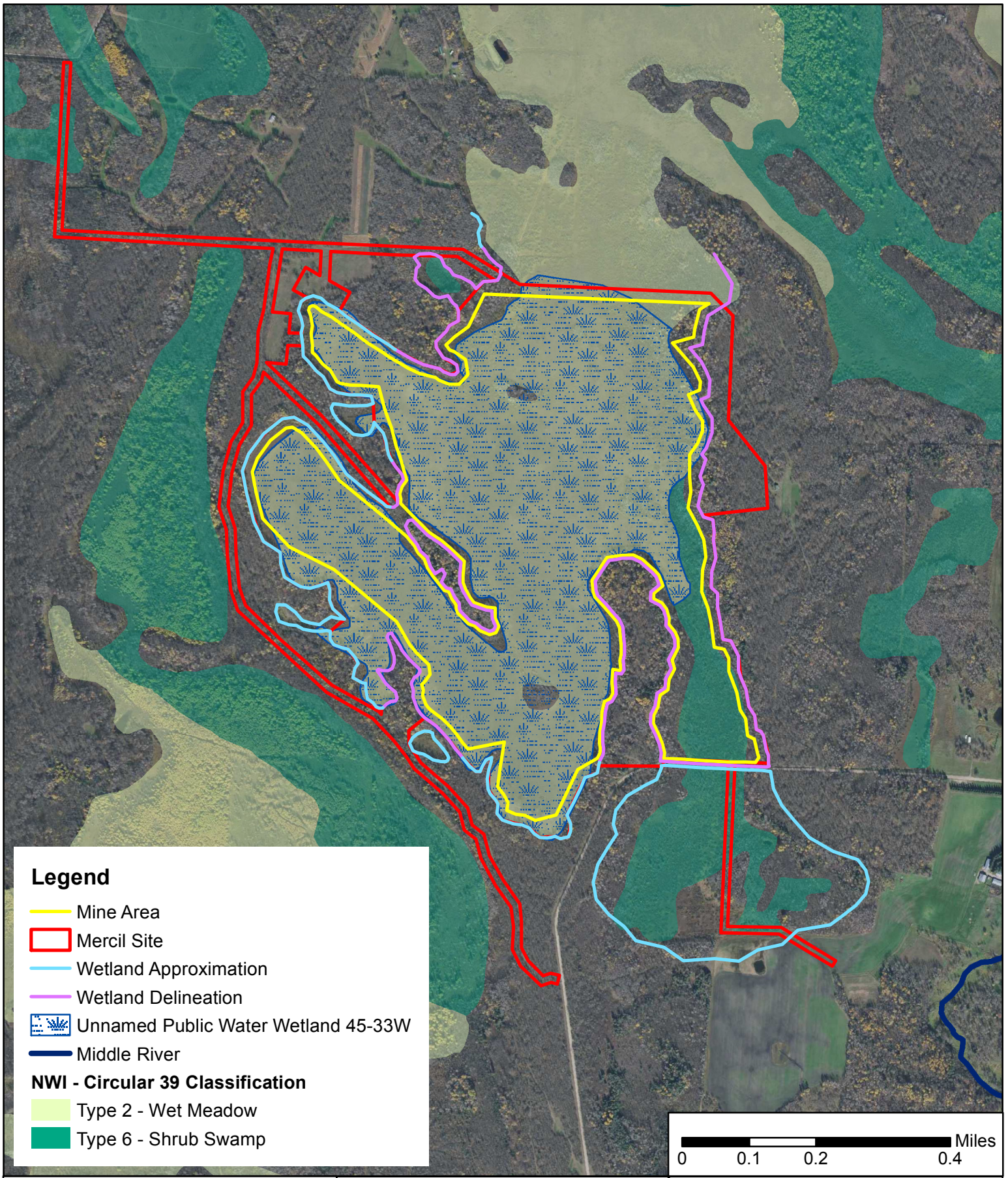
Date: Friday, February 10, 2017



DEPARTMENT OF
NATURAL RESOURCES

Copyright 2017, State of Minnesota,
Department of Natural Resources (DNR).
Data was provided by the Minnesota DNR & Hawkes Co Inc.





Legend

- Mine Area
- Mercil Site
- Wetland Approximation
- Wetland Delineation
- Unnamed Public Water Wetland 45-33W
- Middle River
- NWI - Circular 39 Classification**
- Type 2 - Wet Meadow
- Type 6 - Shrub Swamp

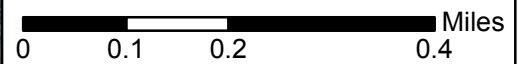


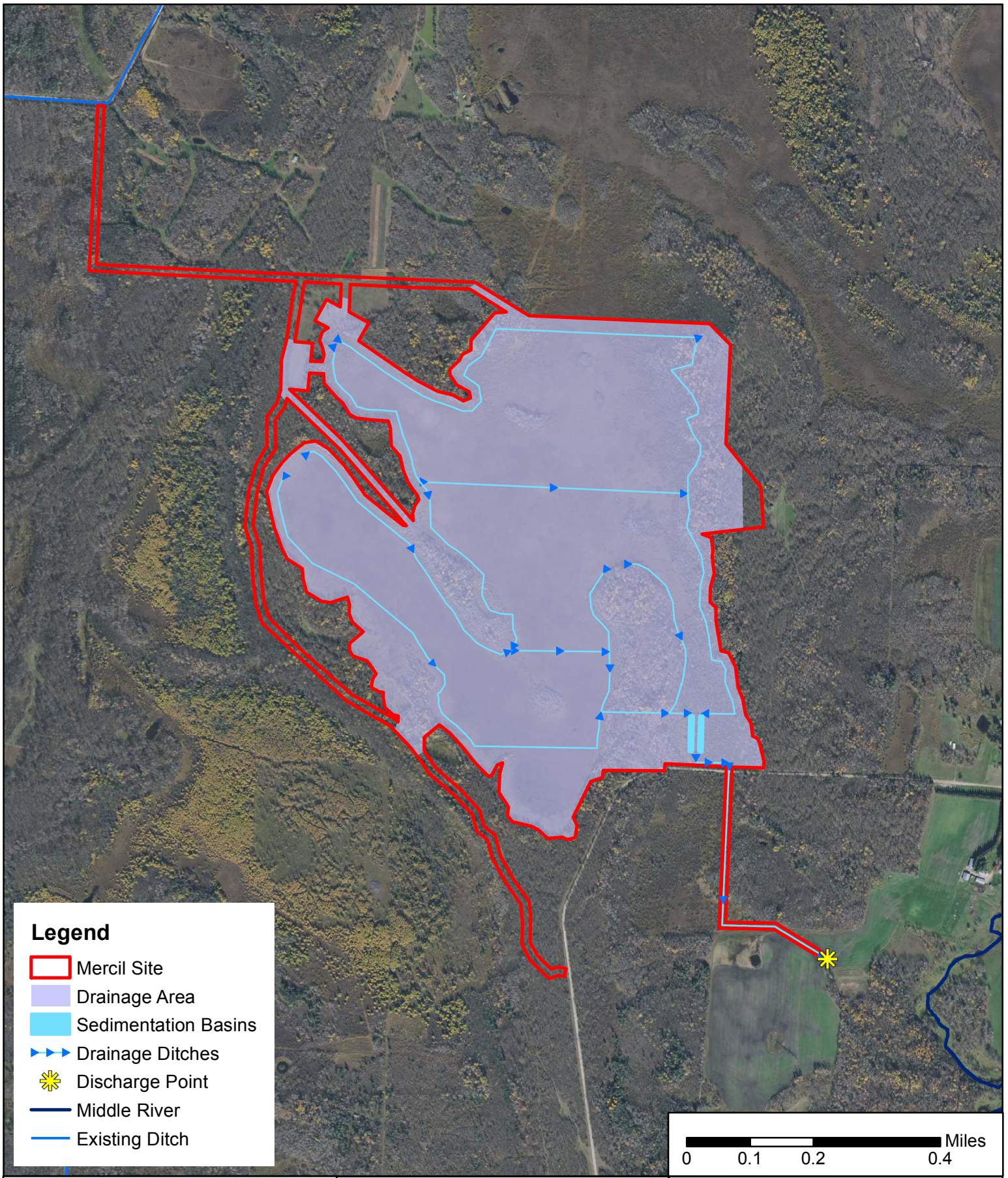
Figure 5
Public Waters & Wetlands

**Hawkes Peat
Mercil Site EAW**

Date: Friday, April 28, 2017

mn
**DEPARTMENT OF
NATURAL RESOURCES**

Copyright 2017, State of Minnesota,
Department of Natural Resources (DNR).
Data was provided by the Minnesota DNR & Hawkes Co Inc.



Legend

- Mercil Site
- Drainage Area
- Sedimentation Basins
- ▶▶▶ Drainage Ditches
- ✱ Discharge Point
- Middle River
- Existing Ditch

0 0.1 0.2 0.4 Miles

**Figure 6
Drainage Area**

**Hawkes Peat
Mercil Site EAW**

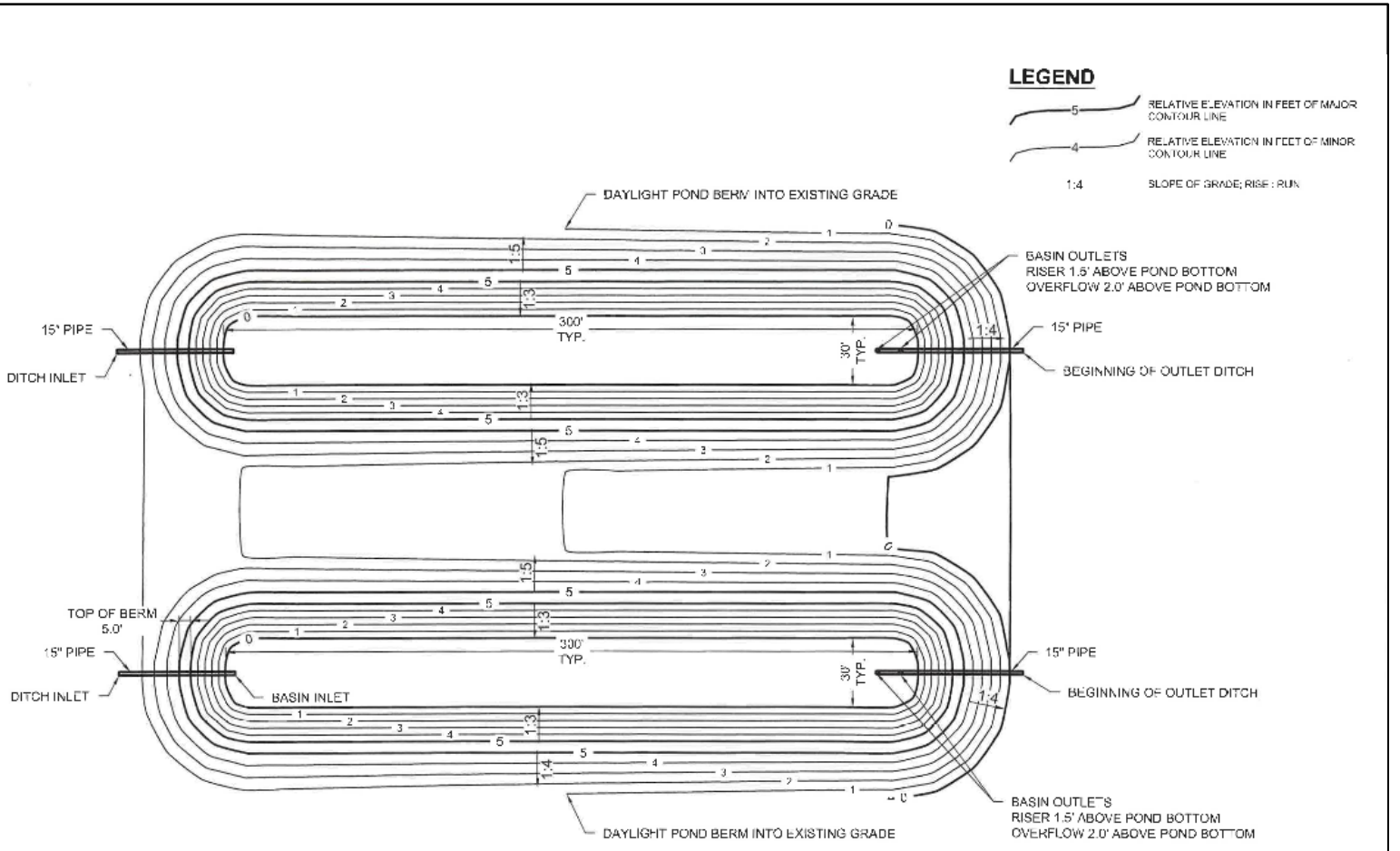
Date: Friday, March 31, 2017



**DEPARTMENT OF
NATURAL RESOURCES**

Copyright 2017, State of Minnesota,
Department of Natural Resources (DNR).
Data was provided by the Minnesota DNR & Hawkes Co Inc.





LEGEND

- RELATIVE ELEVATION IN FEET OF MAJOR CONTOUR LINE
- RELATIVE ELEVATION IN FEET OF MINOR CONTOUR LINE
- 1:4 SLOPE OF GRADE, RISE : RUN

	Engineering Architectural Surveying Environmental		HAWKES WETLAND PERMIT ASSISTANCE HAWKES COMPANY, INC NEWFOLDEN, MN	DATE: APRIL 2014 <small>DATE PREPARED BY: F.G.J.H.E.</small> <small>PROJECT NO.: 02808-232-001</small>
			TYPICAL SEDIMENTATION BASIN PLAN	

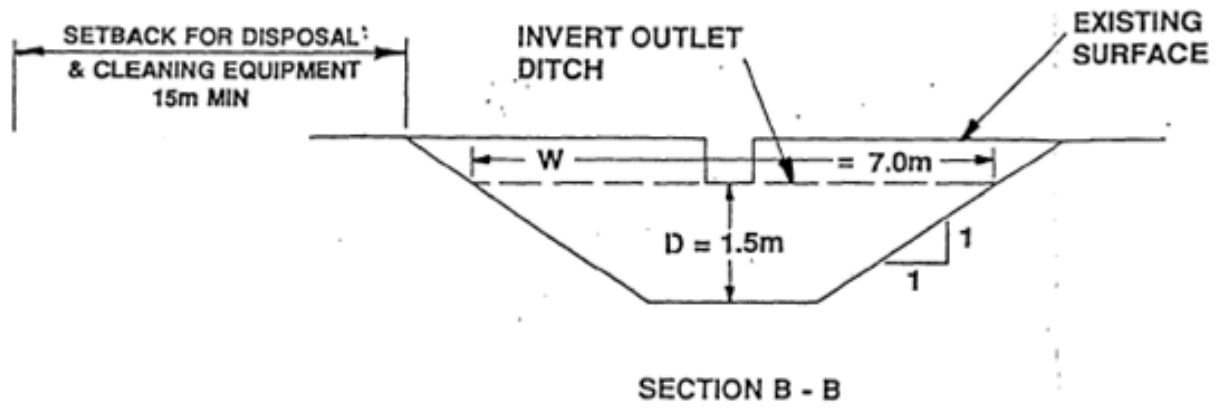


Figure 7
Sedimentation Basin Design

Hawkes Peat Mercil Site EAW

Date: Monday, February 13, 2017



Copyright 2017, State of Minnesota,
Department of Natural Resources (DNR).
Data was provided by the Minnesota DNR & Hawkes Co Inc.

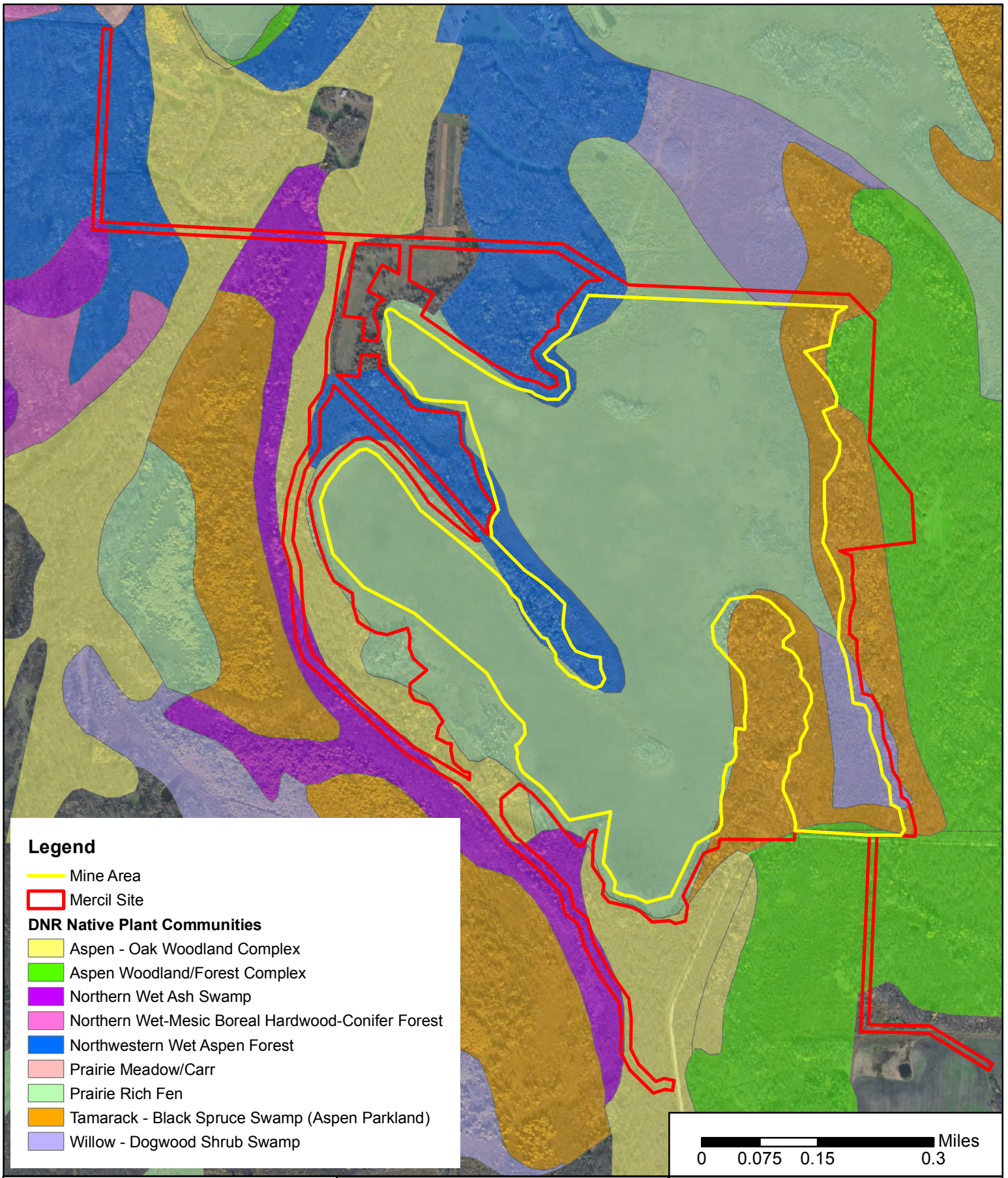


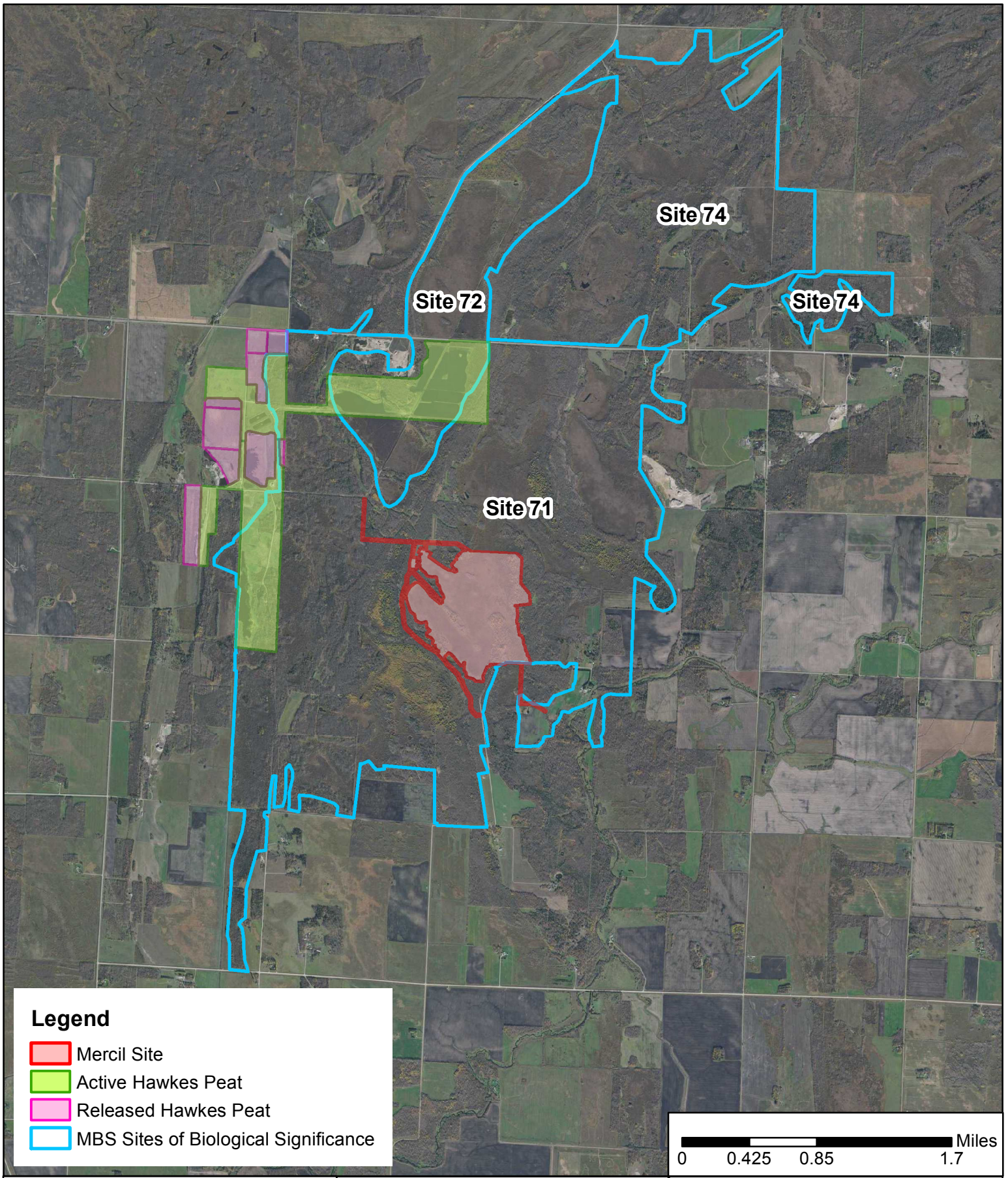
Figure 8
Native Plant Communities

Hawkes Peat
Mercil Site EAW

Date: Friday, February 10, 2017



Copyright 2017, State of Minnesota,
 Department of Natural Resources (DNR).
 Data was provided by the Minnesota DNR & Hawkes Co Inc.



Legend

- Mercil Site
- Active Hawkes Peat
- Released Hawkes Peat
- MBS Sites of Biological Significance

0 0.425 0.85 1.7 Miles

Figure 9
Sites of Biological
Significance: Cumulative
Effects Assessment Area

Hawkes Peat
Mercil Site EAW

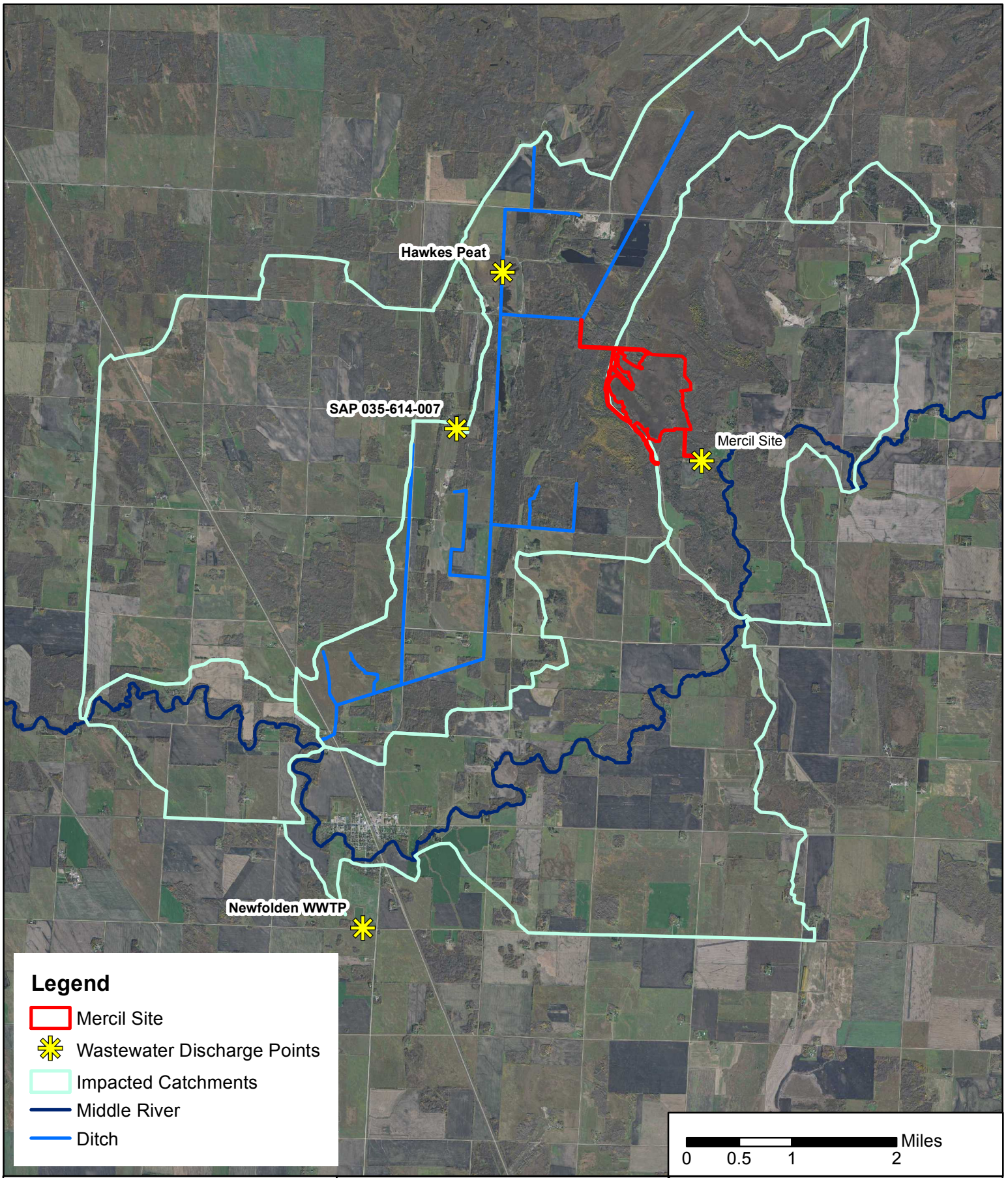
Date: Monday, May 01, 2017



DEPARTMENT OF
NATURAL RESOURCES

Copyright 2017, State of Minnesota,
 Department of Natural Resources (DNR).
 Data was provided by the Minnesota DNR & Hawkes Co Inc.





Legend

- Mercil Site
- ✱ Wastewater Discharge Points
- Impacted Catchments
- Middle River
- Ditch



Figure 10
Water Resource Catchments:
Cumulative Effects
Assessment Area

Hawkes Peat
Mercil Site EAW

Date: Friday, March 31, 2017