

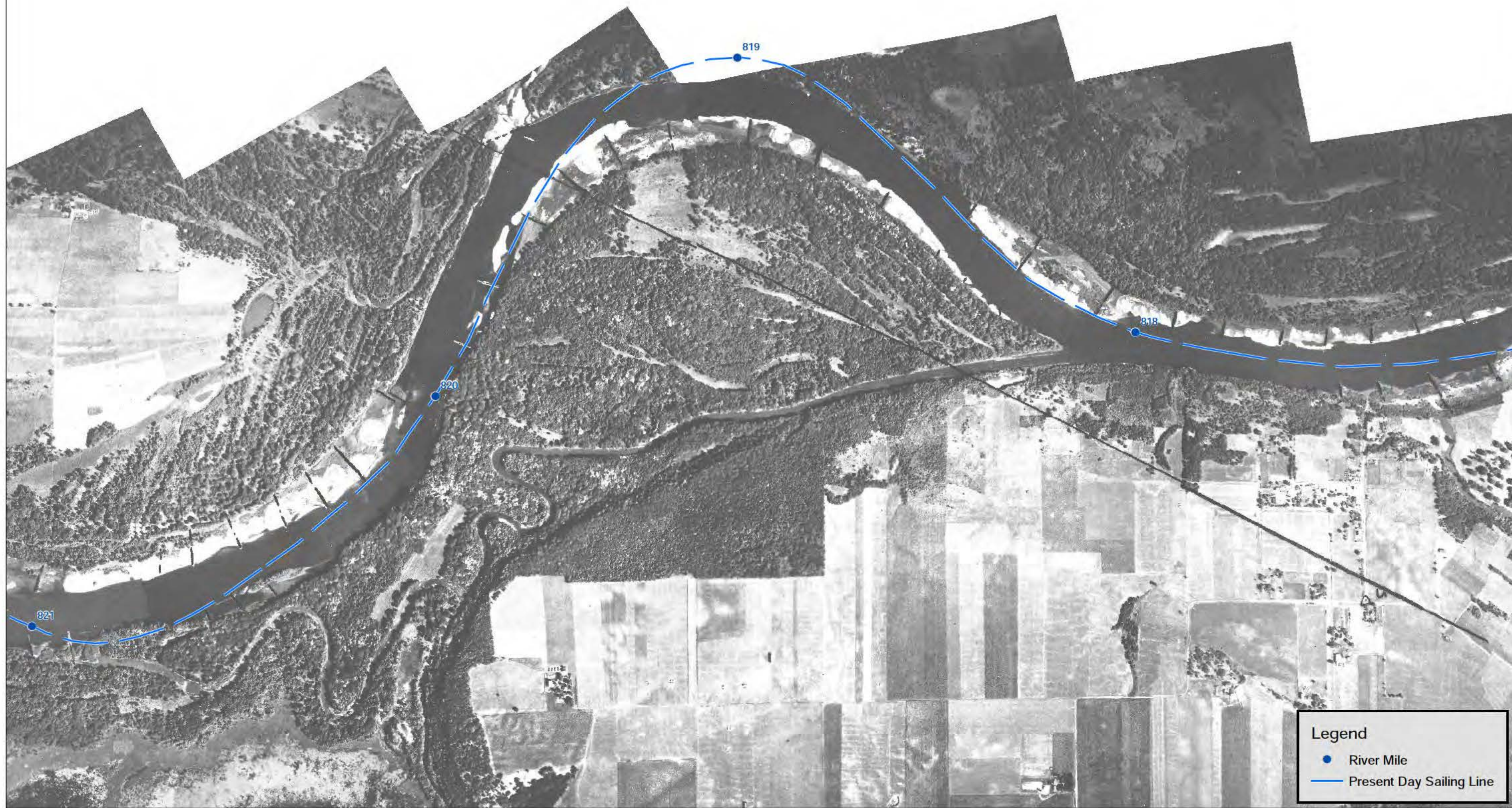
Pool 2 - Site Plan - Mississippi River

Base Image: National Geographic World Map



Plate 1: LP2-CMS





Legend

- River Mile
- Present Day Sailing Line

Pool 2 - Historic Channel - Mississippi River

Base Image: USACE 1927



Plate 2: LP2-CMS





- River Mile
- Present Day Sailing Line
- Current Channel Width

Depth in Feet

	> 8
	7 - 8
	6 - 7
	5 - 6
	4 - 5
	3 - 4
	2 - 3
	1 - 2
	0 - 1

Pool 2 - Bathymetry 2014/15 - Mississippi River

Base Image: 2015 NAIP



Plate 3: LP2-CMS





- River Mile
- Structure - Wing Dam
- - - Present Day Sailing Line
- Light Blue Area: Current Channel Width
- Dark Blue Area: Increased Channel Maintenance Width (ICM)

Pool 2 - Channel Width - Mississippi River

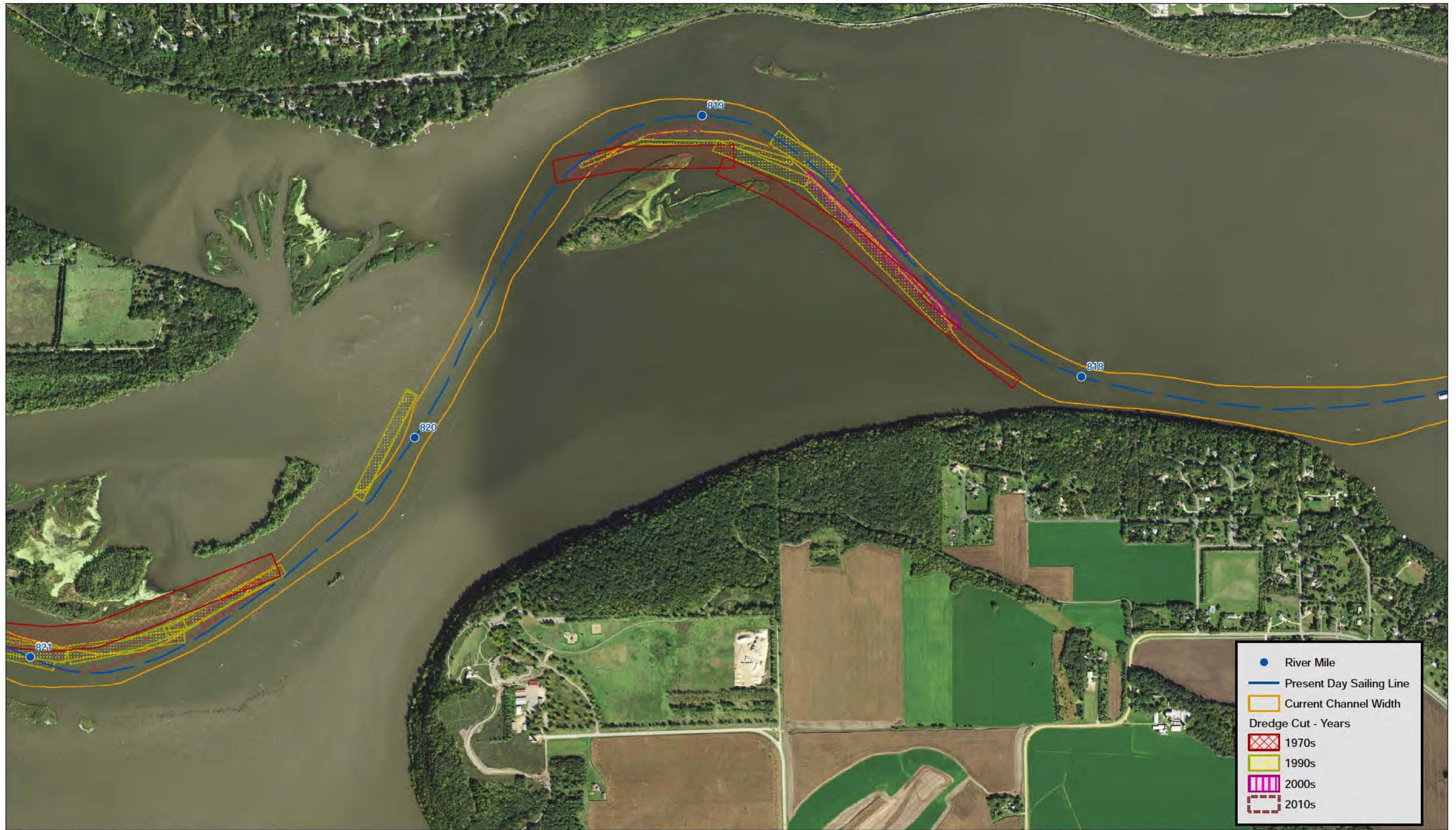
Base Image: 2015 NAIP



Plate 4: LP2-CMS

ICM dredging dimensions:
 818.0-820.5 - 350'
 820.5-821.0 - 450'
 Authorized dredging dimensions:
 817.8-820.3 - 400'
 820.3-821.5 - 500'





Pool 2 - Dredge Cuts - Mississippi River

Base Image: 2015 NAIP



Plate 5: LP2-CMS



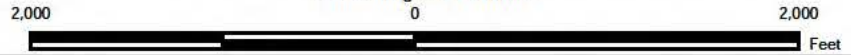


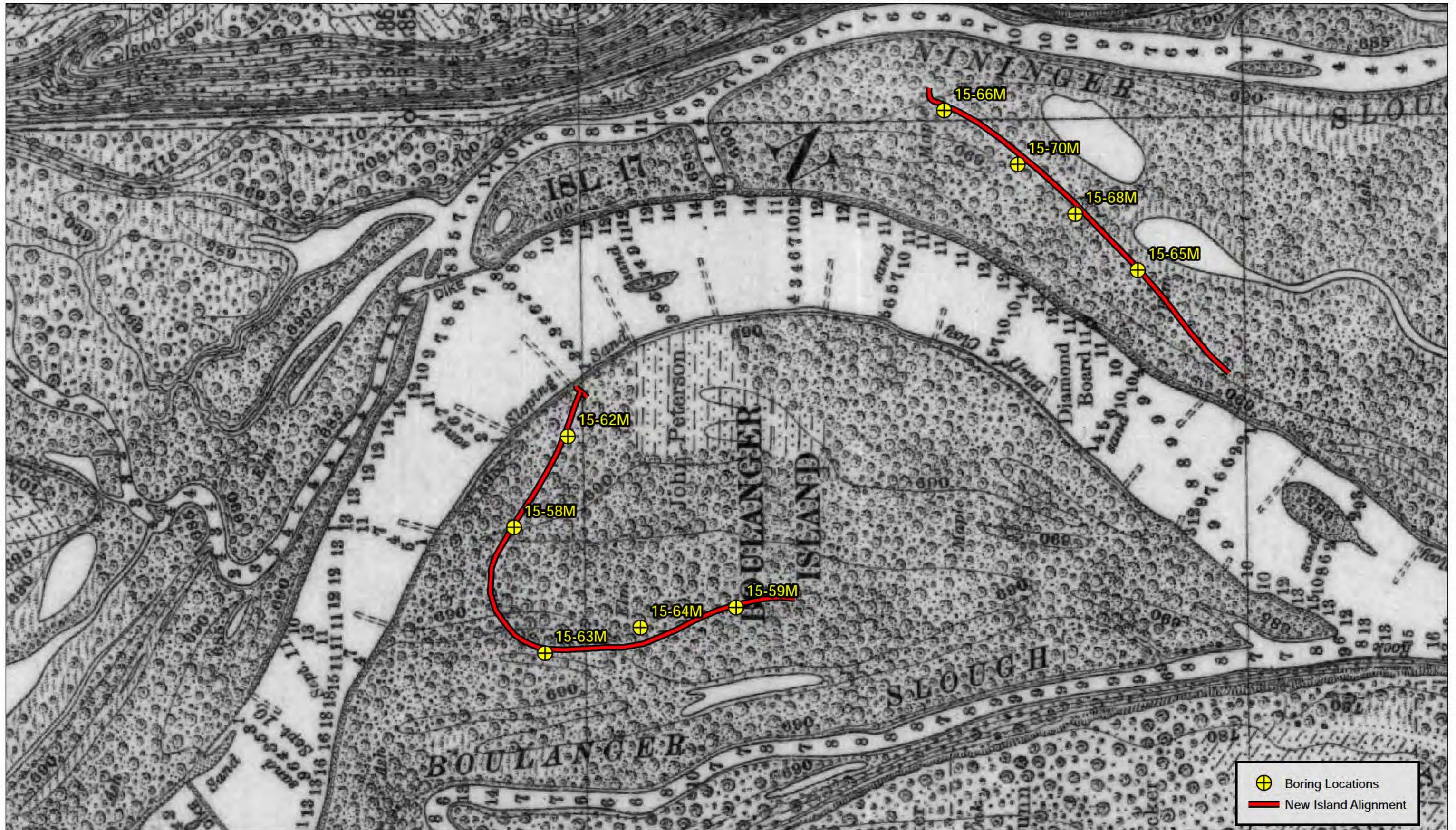
- New Island Alignment
- River Mile
- Present Day Sailing Line
- ▭ Current Channel Width
- ▭ Increased Channel Maintenance Width (ICM)



Pool 2 - Current TSP - Mississippi River
 Increase Channel Maintenance with Structures (ICMS)

Base Image: 2015 NAIP

Plate 6: LP2-CMS





	Boring Locations
	New Island Alignment

Pool 2 - Historic Channel - Mississippi River

Base Image: 1890 Brown Survey

Plate 7: LP2-CMS

