

Figure 1: Blazing Star State Trail - Myre-Big Island State Park to Hayward, Freeborn County

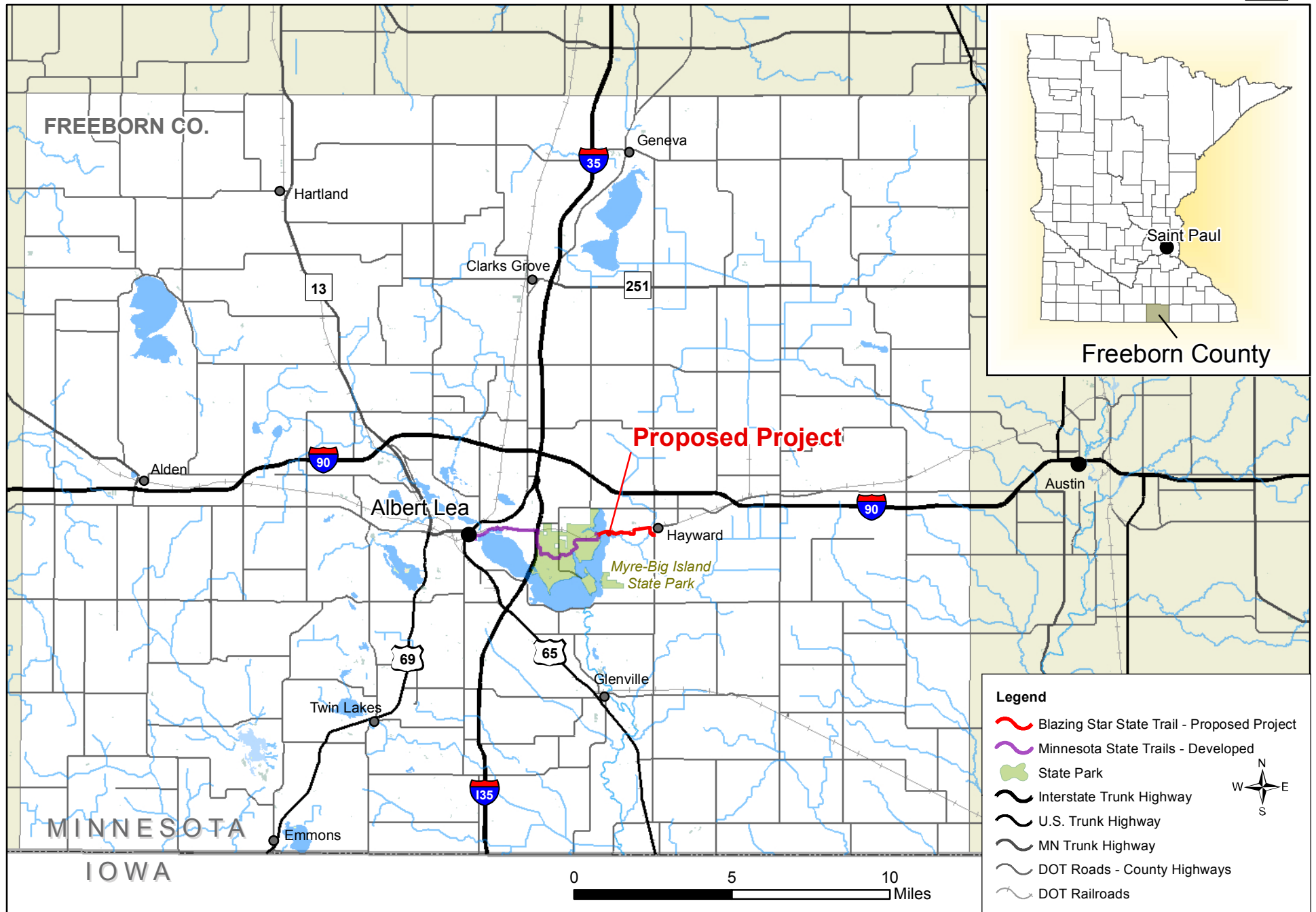
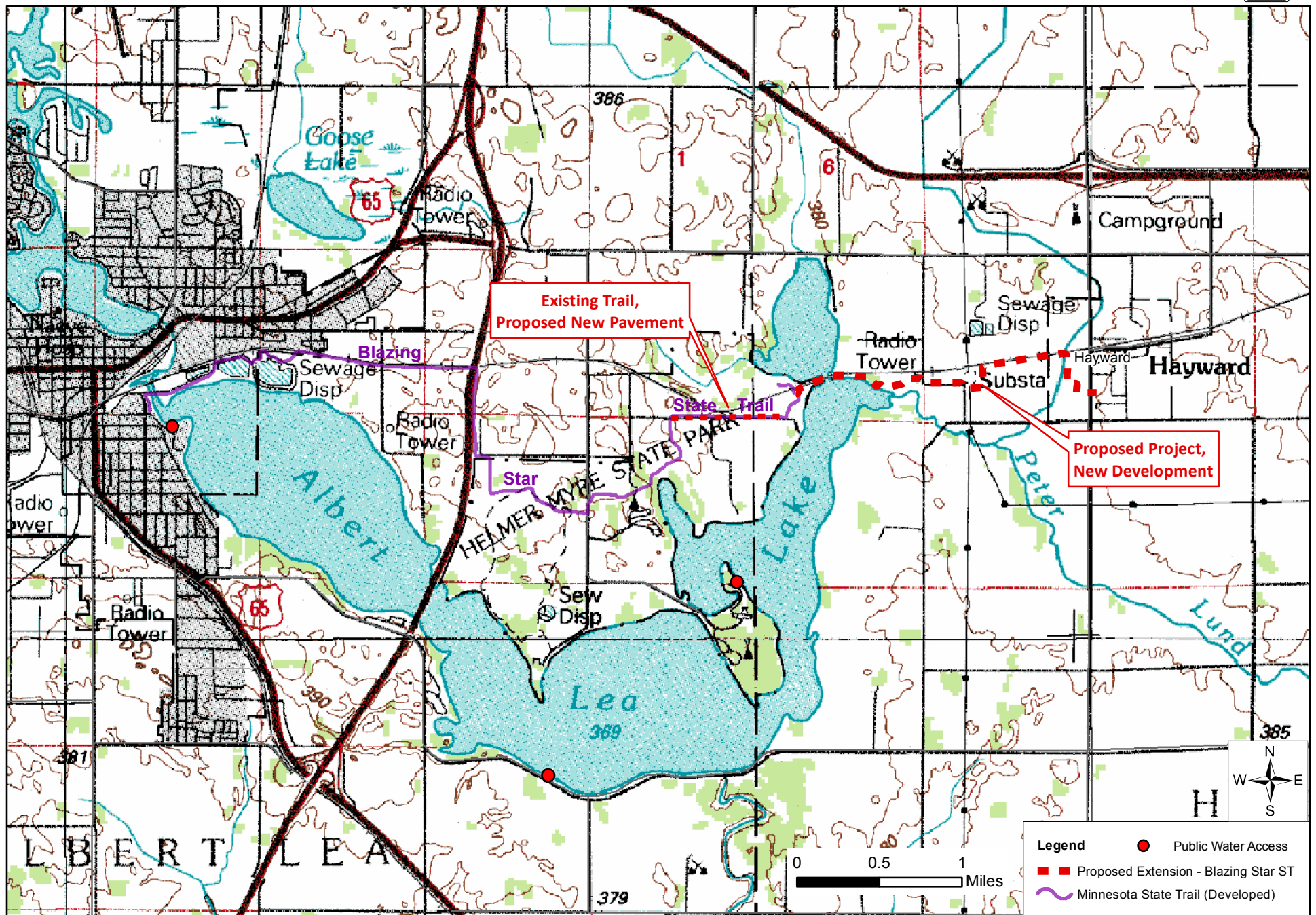


Figure 2: Blazing Star State Trail - Myre-Big Island State Park to Hayward, Freeborn County, USGS Map, 1:24,000



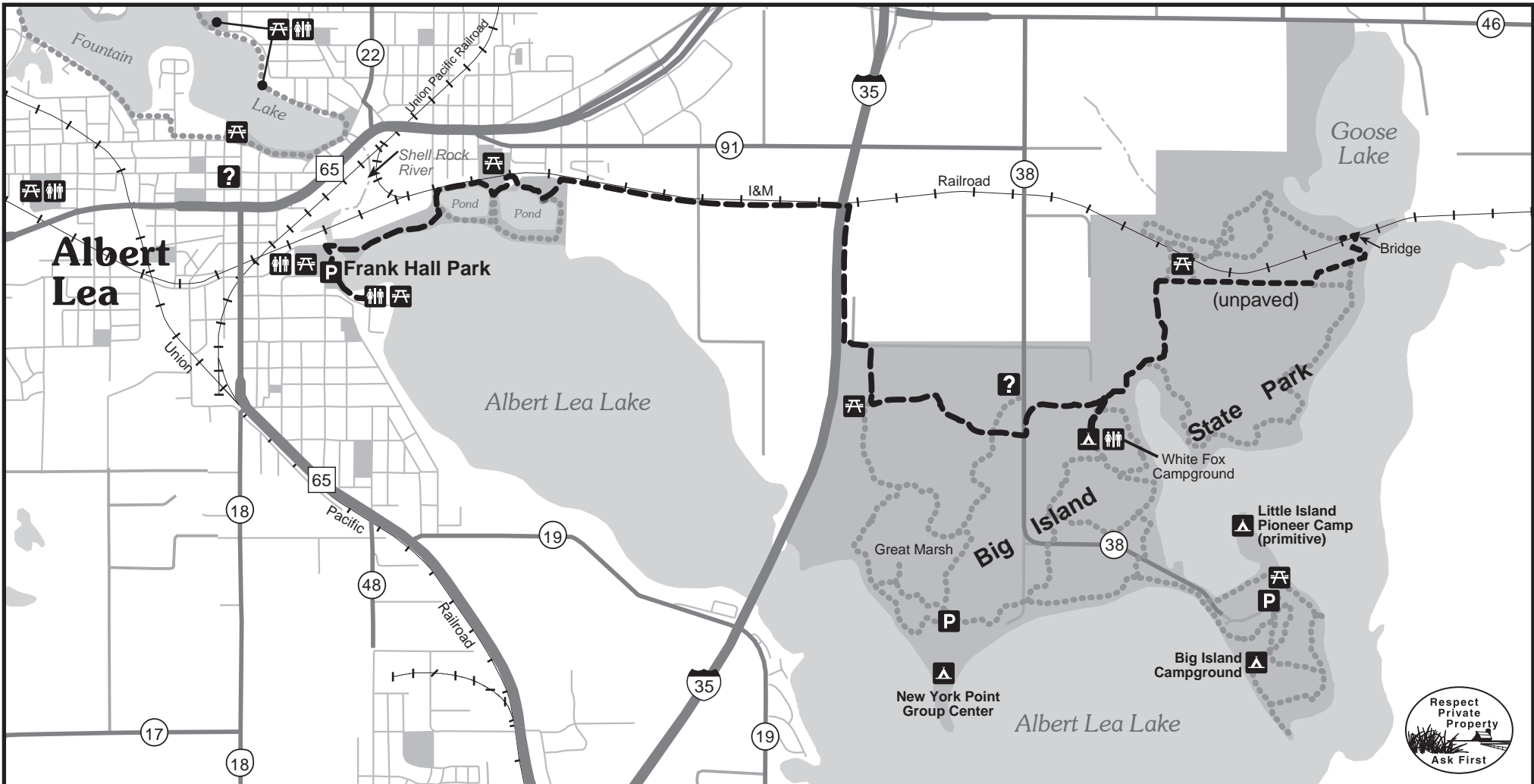


Figure 3: Blazing Star State Trail (Developed)

Map Legend

- State Trail (asphalt)
- State Trail (unpaved)
- Other Hiking/Biking Trails
- Park Areas
- Parking
- Picnic/Rest Area
- Toilet
- Information
- Camping

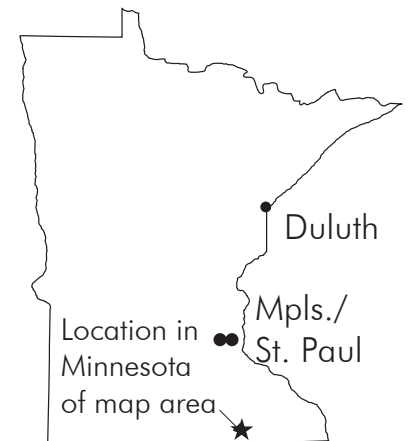
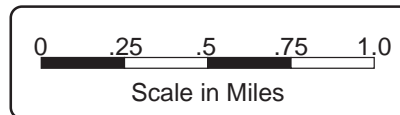


Figure 4: Blazing Star State Trail - Myre-Big Island State Park to Hayward Project Area, Including Land and Surface Water Features

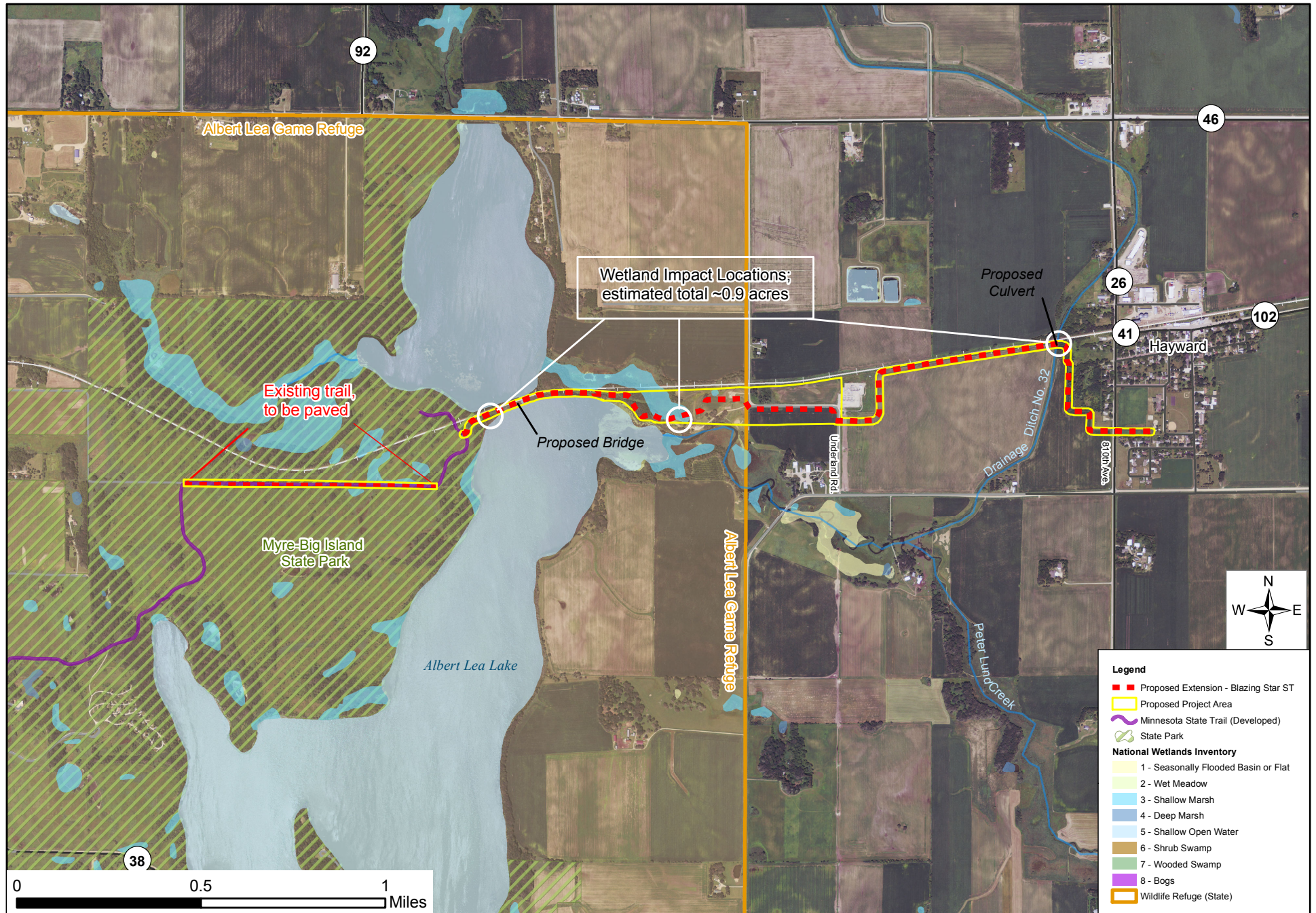


Figure 5: Blazing Star State Trail - Myre-Big Island State Park to Hayward -
 USDA, NRCS Soil Survey Map Units

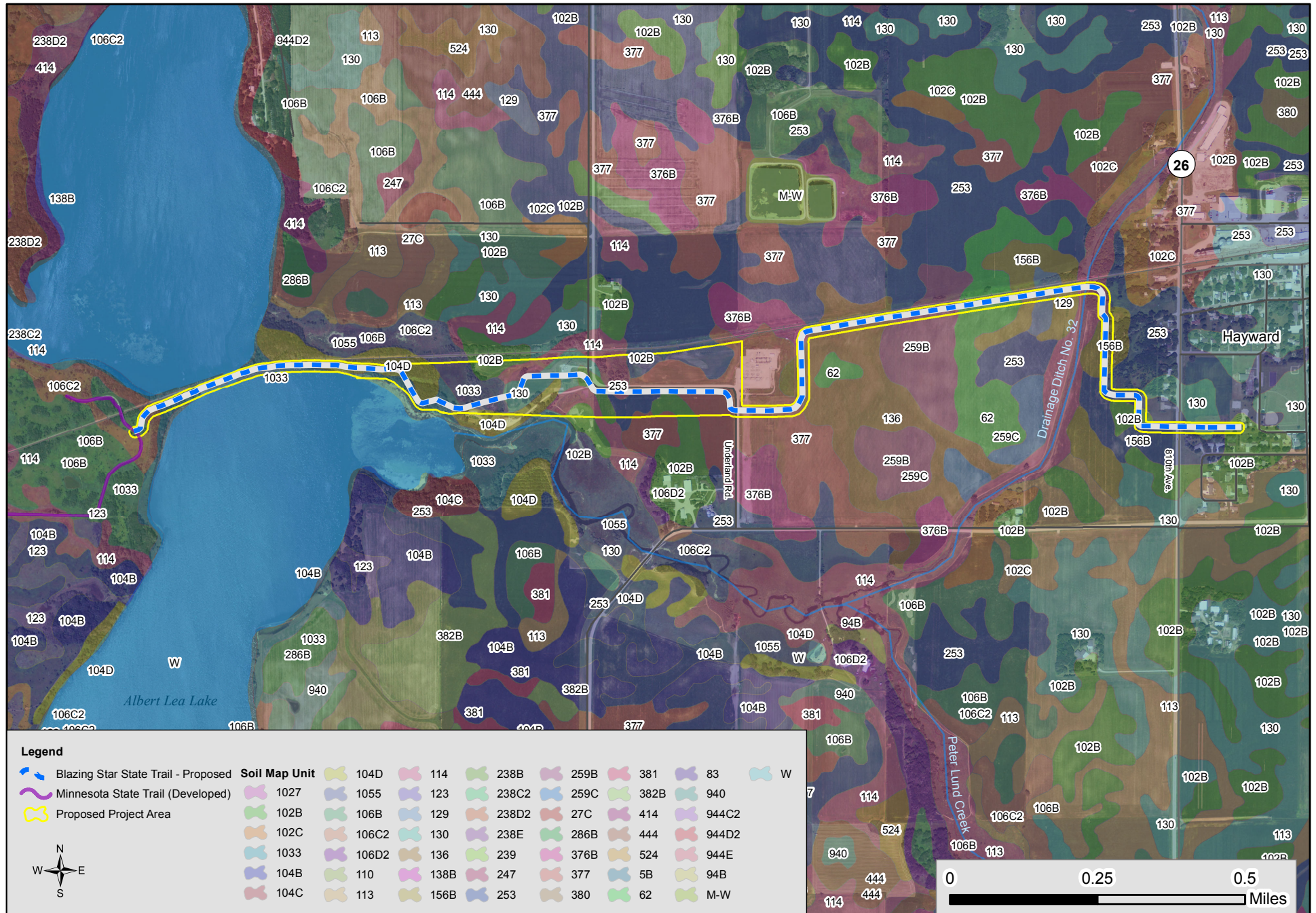
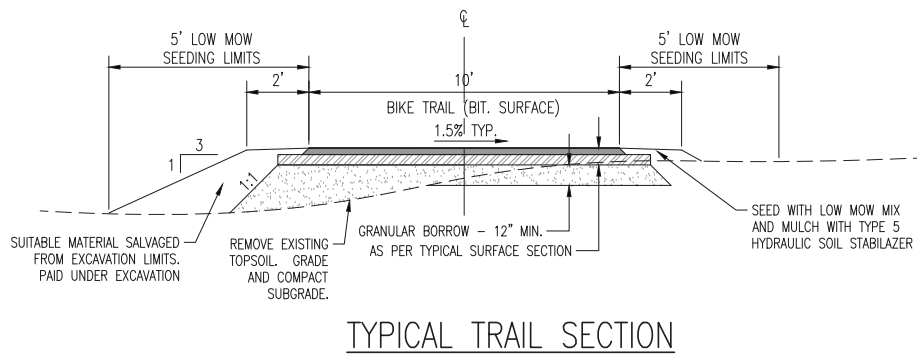
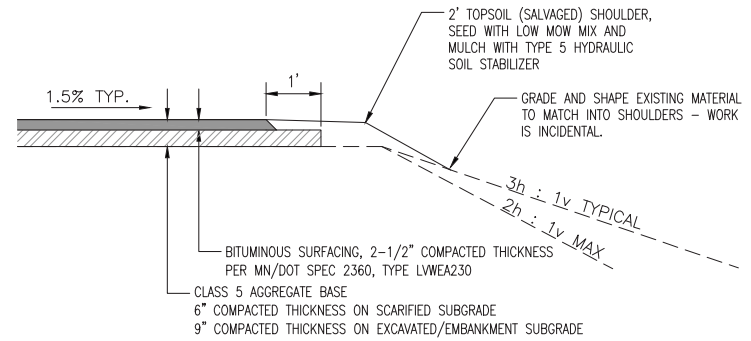


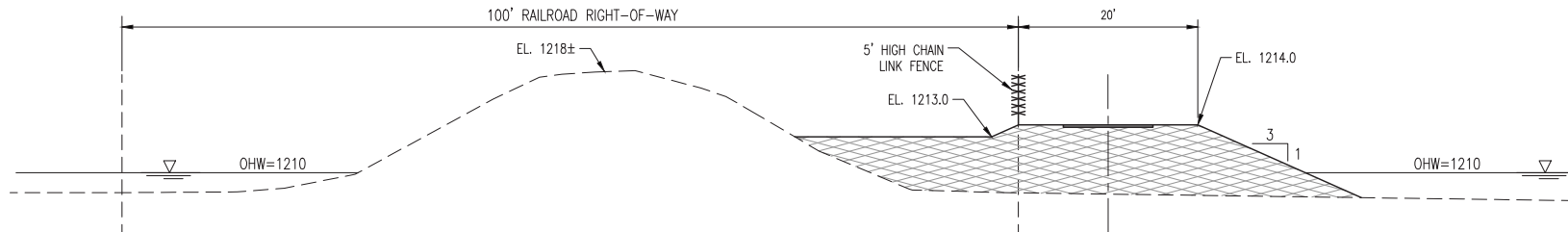
Figure 6: Blazing Star State Trail - Typical Trail Section Profiles



TYPICAL TRAIL SECTION



TYPICAL SURFACE SECTION



TYPICAL SECTION - FILL ADJACENT TO RAILROAD

EARTHWORK TABULATION		
EXCAVATION (CY)(LV)	EMBANKMENT (CY)(LV)	EXCESS EXCAVATION (CY)(LV)
XXXX	XXXX	XXXX

NOTES:
 1. VOLUMES CALCULATED BY AVERAGE END AREAS.
 2. ALL EXCESS EXCAVATED MATERIAL TO BE HAULED OFF SITE. NO DIRECT PAYMENT WILL BE MADE FOR HAULING OF EXCESS EXCAVATED MATERIAL OFF SITE.
 3. EXCAVATION QUANTITY INCLUDES EXCAVATION FOR PLACEMENT OF GRANULAR BORROW.

CONSTRUCTION NOTES

1. TYPICAL SECTIONS NOT DRAWN TO SCALE.
2. ALL DISTURBED AREAS OUTSIDE OF THE LOW MOW SEEDING LIMITS SHALL BE SEEDED WITH DRY PRAIRIE SOUTHWEST SEED MIX 35-521.
3. CONSTRUCT A TRANSITION BETWEEN EACH TYPICAL SECTION. BEGIN TRANSITION 50 FT PRIOR TO NOTED STATION AND END 50 FT BEYOND.

COPYRIGHT- MINNESOTA DEPARTMENT OF NATURAL RESOURCES



HEREBY CERTIFY THAT THIS PLAN, SPECIFICATION OR REPORT WAS PREPARED BY ME OR UNDER MY DIRECT SUPERVISION, AND THAT I AM A DULY LICENSED PROFESSIONAL ENGINEER UNDER THE LAWS OF THE STATE OF MINNESOTA

Name: Yancey Starn Reg Number: 26381
 Date: 3.22.2013

Operations Services Division
 Safety Facilities Materials Equipment Field Operations Information Management

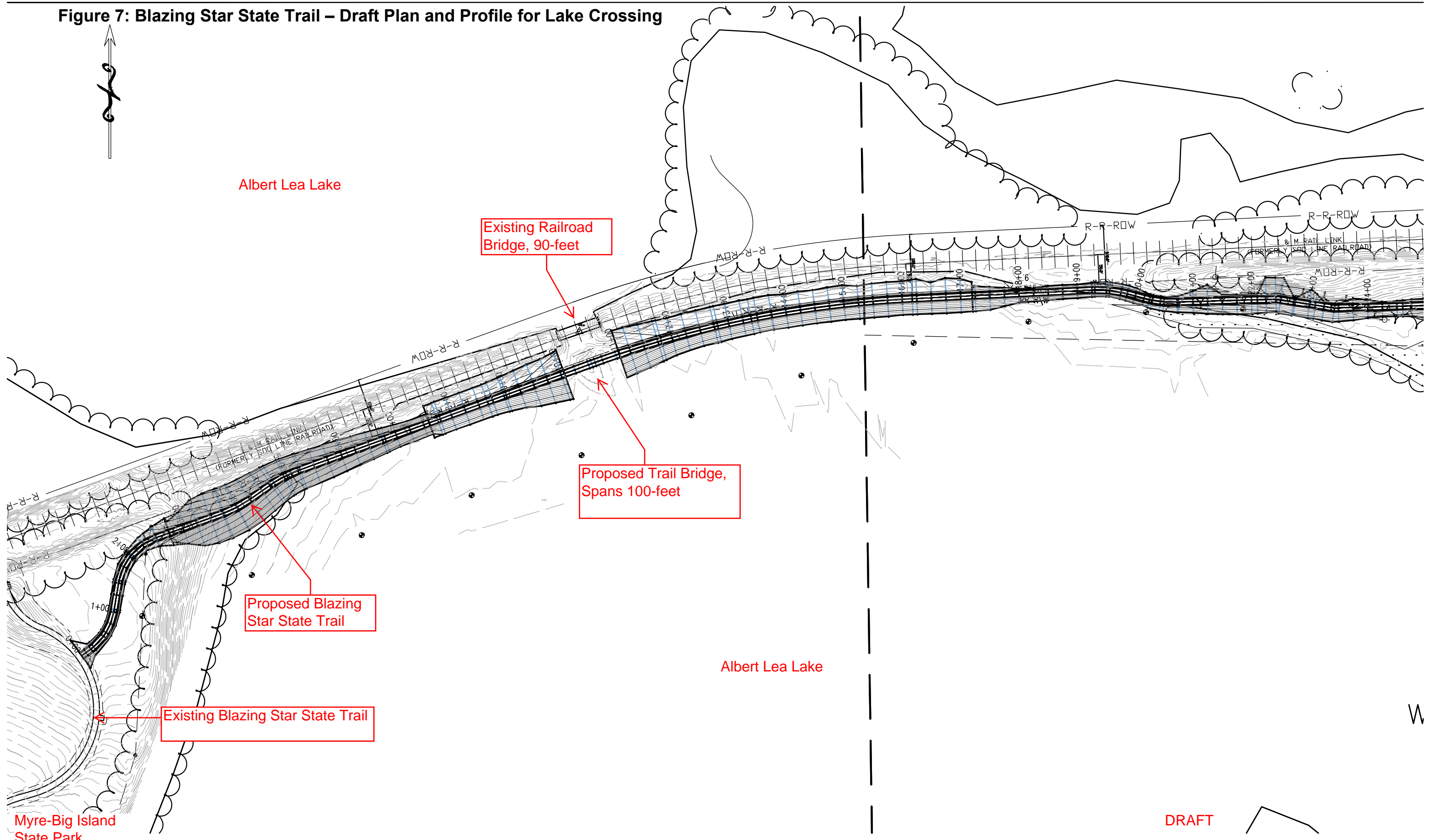
DNR Division of Parks and Trails
 Blazing Star State Trail
 Myre Big Island to Hayward
 Freeborn Section: 7 & 8 Township: 102 N Range: 20 W Hayward

Revisions	
Date	By

TRAIL SECTIONS & DETAILS			
Survey: W. NORDIN	DEC 2011	Designed: Y. STAM	3/08
Drawn: C. RICE	MAR 2012	Drawn: Y. STAM	6/09
Checked: Y. STAM	MAR 2012	Checked: T. REICH	6/09
Horiz datum: NAD 83 (96 ADJ)		Vert datum: NGVD 1929	

Sheet: **D2**
 Req. Number: **8T035**
 File Number: **TRA.0074.00.00.**

Figure 7: Blazing Star State Trail – Draft Plan and Profile for Lake Crossing



Myre-Big Island State Park

DRAFT



I HEREBY CERTIFY THAT THIS PLAN, SPECIFICATION OR REPORT WAS PREPARED BY ME OR UNDER MY DIRECT SUPERVISION, AND THAT I AM A DULY LICENSED PROFESSIONAL ENGINEER UNDER THE LAWS OF THE STATE OF MINNESOTA

Name: Yancey Stam Reg. Number: 26381
 Date: 3.22.2013

Operations Services Division
 Safety
Facilities
 Materials
 Equipment
 Field Operations
 Information Management

DNR Division of Parks and Trails
 Blazing Star State Trail
 Myre Big Island to Hayward

Freeborn Section: 7 & 8 Township: 102 N Hayward Range: 20 W

Revisions	
Date	By

Plan and Profile			
Survey: W. NORDIN	DEC 2011	Designed: Y.STAM	3/08
Drawn: C. RICE	MAR 2012	Drawn: Y.STAM	6/09
Checked: Y. STAM	MAR 2012	Checked: T.REICH	6/09
Horz datum: NAD 83 ('96 ADJ)		Vert datum: NGVD 1929	

Sheet: L1
Req. Number: 8T035
File Number: TRA.0074.00.00.