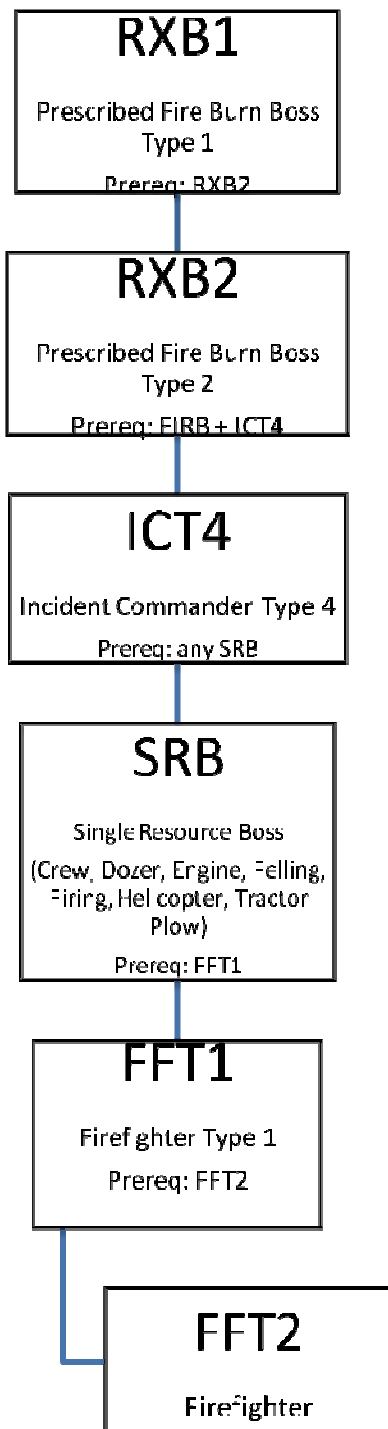


B. NWCG Prescribed Burn Qualifications Track



1. Principal NWCG Prescribed Burn Positions

**Firefighter (FFT2)**

A firefighter is the basic resource used in the control and extinguishment of wildfires and in the preparing, firing and holding of lines for prescribed burns. They

work either as an individual or as a member of a crew under the supervision of a higher qualified individual.

#### Required training

- S-130 Firefighter Training
- S-190 Introduction to Wildland Fire Behavior
- I-100 Introduction to Incident Command System
- IS-700 NIMS, An Introduction
- L-180 Human Factors on the Fireline
- RT-130 Annual Fireline Safety Refresher (not required for first year, however it is required for all subsequent years)

#### Position task books

- Satisfactory completion of the required training meets position requirements. The FFT2 position does not have a task book.

#### Physical fitness

- Arduous

### **Advanced Firefighter/Squad Boss (FFT1)**

A squad boss is a working leader of a small group of not more than 7 firefighters who is responsible for keeping assigned personnel fully employed on assigned jobs.

#### Required training

- S-130 Firefighter Training
- S-190 Introduction to Wildland Fire Behavior
- S-131 Firefighter Type 1
- S-133 Look Up, Look Down, Look Around
- I-100 Introduction to ICS
- IS-700 NIMS, An Introduction
- L-180 Human Factors on the Fireline
- RT-130 Annual Fireline Safety Refresher

#### Recommended training to support knowledge and skills

- S-211 Portable Pumps and Water Use
- S-212 Wildfire Power Saws

#### Position task books

- FFT1 Firefighter Type 1

#### Physical fitness

- Arduous

#### Other Position Assignments that will Maintain Currency

- Incident Commander Type 5 (ICT5)
- Any higher position for which this position is a prerequisite

**Single Resource Boss (Crew Boss CRWB, Engine Boss ENGB, Dozer Boss DOZB, Firing Boss FIRB, Tractor Plow Boss TRPB, Helicopter Boss HELB)**

A single resource boss is responsible for supervising and directing a fire suppression module such as a hand crew, an engine, a dozer, a helicopter, a firing team or a tractor plow. The Firing Boss (FIRB) is qualified to direct the ignition of low to moderate complexity (as per the NWCG Complexity Rating Guide NFES 2474) burns under the supervision of a Prescribed Fire Burn Boss Type 2 (RxB2). The FIRB typically supervises a group of 3-5 igniters and/or holding crew members and may be responsible for use of a variety of ground ignition devices. They may also be responsible for monitoring weather and burning conditions to meet the desired fire effects and necessary level of control.

Required training

- S-130 Firefighter Training
- S-190 Introduction to Wildland Fire Behavior
- S-131 Firefighter Type 1
- S-133 Look Up, Look Down, Look Around
- S-230 Crew Boss
- S-290 Intermediate Fire Behavior
- I-100 Introduction to ICS
- I-200 Basic ICS
- IS-700 NIMS, An Introduction
- L-180 Human Factors on the Fireline
- RT-130 Annual Fireline Safety Refresher

Recommended training to support knowledge and skills

- S-211 Portable Pumps and Water Use
- S-212 Wildfire Power Saws
- S-231 Engine Boss
- S-234 Ignition Operations
- S-260 Interagency Incident Business Management
- S-270 Basic Air Operations
- L-280 Followership to Leadership

Position task books

- FFT1 Firefighter Type 1
- CRWB Crew Boss OR ENGB Engine Boss OR DOZB Dozer Boss OR FIRB Firing Boss OR FELB Felling Boss or TRPB Tractor Plow Boss

Physical fitness

- Arduous

Other Position Assignments that will Maintain Currency

- Incident Commander Type 4 (ICT4)
- Any Single Resource Boss
- Any higher position for which this position is a prerequisite

### **Incident Commander Type 4 (ICT4)**

The incident commander is responsible for incident activities including the development and implementation of strategic decisions and for approving the ordering and releasing of resources. A type 4 incident is normally limited to one operational period. Resources may vary from one to several single resources and possibly a task force.

#### Required training

- S-130 Firefighter Training
- S-190 Introduction to Wildland Fire Behavior
- S-131 Firefighter Type 1
- S-133 Look Up, Look Down, Look Around
- S-200 Initial Attack Incident Commander
- S-230 Crew Boss
- S-290 Intermediate Fire Behavior
- I-100 Introduction to ICS
- I-200 Basic ICS
- IS-700 NIMS, An Introduction
- L-180 Human Factors on the Fireline
- RT-130 Annual Fire Safety Refresher

#### Recommended training to support knowledge and skills

- S-211 Portable Pumps and Water Use
- S-212 Wildfire Power Saws
- S-215 Fire Operations in the Urban Interface
- S-231 Engine Boss
- S-234 Ignition Operations
- S-260 Interagency Incident Business Management
- S-270 Basic Air Operations
- L-280 Followership to Leadership

#### Position task books

- FFT1 Firefighter Type 1
- CRWB Crew Boss OR ENGB Engine Boss OR DOZB Dozer Boss OR FIRB Firing Boss OR FELB Felling Boss or TRPB Tractor Plow Boss
- ICT4 Initial Attack Incident Commander

#### Physical fitness

- Arduous

#### Other Position Assignments that will Maintain Currency

- Prescribed Burn Boss Type 2 (RXB2)
- Any Single Resource Boss position
- Any higher position for which this position is a prerequisite

## **Prescribed Fire Burn Boss Type 2 (RXB2)**

Prescribed Fire Burn Boss Type 2's (RXB2) are capable of directing a prescribed burn of moderate or lower complexity (as per the NWCG Complexity Rating Guide NFES 2474) on agency or private lands. They have demonstrated proficiency in the fuel type(s) they are burning. Typically a RXB2 would handle medium to large grassland, oak savanna and hardwood under story burns, small to medium slash and small pine under story burns.

### Required training

- S-130 Firefighter Training
- S-190 Introduction to Wildland Fire Behavior
- S-131 Firefighter Type 1
- S-133 Look Up, Look Down, Look Around
- S-200 Initial Attack Incident Commander
- S-230 Crew Boss
- S-290 Intermediate Fire Behavior
- S-390 Wildland Fire Behavior Calculations
- I-100 Introduction to ICS
- I-200 Basic ICS
- IS-700 NIMS, An Introduction
- L-180 Human Factors on the Fireline
- RT-130 Annual Fire Safety Refresher

### Recommended training to support knowledge and skills

- S-211 Portable Pumps and Water Use
- S-212 Wildfire Power Saws
- S-215 Fire Operations in the Urban Interface
- S-231 Engine Boss
- S-234 Ignition Operations
- S-260 Interagency Incident Business Management
- S-270 Basic Air Operations
- L-280 Followership to Leadership
- L-380 Fireline Leadership or equivalent
- Rx-301 Prescribed Fire Implementation
- Rx-310 Introduction to Fire Effects
- RX-341 Prescribed Fire Burn Plan Preparation

### Position task books

- FFT1 Advanced Firefighter/Squad Boss
- CRWB Crew Boss OR ENGB Engine Boss OR DOZB Dozer Boss OR TRPB Tractor Plow Boss OR HELB Helicopter Boss
- ICT4 Initial Attack Incident Commander
- FIRB Firing Boss
- RXB2 Prescribed Fire Burn Boss Type 2 in representative fuel group

### Physical fitness

- Moderate

### Other Position Assignments that will Maintain Currency

- Any higher position for which this position is a prerequisite

## **Prescribed Fire Burn Boss Type 1 (RXB1)**

Prescribed Fire Burn Boss Type 1's (RXB1) are capable of directing a prescribed burn of high or lower complexity (based on the NIIMS Complexity Rating Guide) on all lands. They have demonstrated proficiency in the fuel type(s) they are burning. Typically they would handle large grass/brush, oak woods/savanna, hardwood under story, large slash and medium to large pine under story burns. RXB1 must meet the prerequisite qualifications of RXB2.

### Required training

- S-130 Firefighter Training
- S-190 Introduction to Wildland Fire Behavior
- S-131 Firefighter Type 1
- S-133 Look Up, Look Down, Look Around
- S-200 Initial Attack Incident Commander
- S-230 Crew Boss
- S-290 Intermediate Fire Behavior
- S-390 Wildland Fire Behavior Calculations
- S-490 Advanced Fire Behavior
- I-100 Introduction to ICS
- I-200 Basic ICS
- I-300 Intermediate ICS
- IS-700 NIMS, An Introduction
- L-180 Human Factors on the Fireline
- RT-130 Annual Fire Safety Refresher

### Recommended training to support knowledge and skills

- S-211 Portable Pumps and Water Use
- S-212 Wildfire Power Saws
- S-231 Engine Boss
- S-234 Ignition Operations
- S-260 Interagency Incident Business Management
- S-270 Basic Air Operations
- L-280 Followership to Leadership
- L-380 Fireline Leadership or equivalent
- RX-301 Prescribed Fire Implementation
- RX-310 Introduction to Fire Effects
- RX-341 Prescribed Fire Burn Plan Preparation
- RX-410 Smoke Management
- RX-510 Applied Fire Effects
- M-581 Fire Program Management

### Position task books

- FFT1 Advanced Firefighter/Squad Boss
- CRWB Crew Boss OR ENGB Engine Boss OR DOZB Dozer Boss OR TRPB Tractor Plow Boss OR HELB Helicopter Boss
- ICT4 Initial Attack Incident Commander
- FIRB Firing Boss
- RXB2 Prescribed Fire Burn Boss Type 2 in representative fuel group

- RXB1 Prescribed Fire Burn Boss Type 1
- Physical fitness
- Light
- Other Position Assignments that will Maintain Currency
- Prescribed Fire Burn Boss 2
  - Any higher position for which this position is a prerequisite

## 2. Position Task Books

Becoming qualified for most positions requires completing a task book. Task books are a means of evaluating the performance of an individual who is in training for a new position or for recertifying individuals whose currency in the position has lapsed. They contain critical tasks that are required to perform the job. The task book can be used as a teaching and/or mentoring tool for trainees to learn job skills under the guidance of qualified individuals. The trainee must perform each task while being observed by an evaluator or person who is already qualified in that position. It is strongly recommended that each task book have more than one evaluator and more than one assignment. See the Wildland and Prescribed Fire Qualifications System Guide PMS 310-1 for more detailed information.

Trainees must complete all prerequisite experience for a particular qualification prior to obtaining and initiating a position task book. Completion of a DNR Position Task Book does not qualify a person for an NWCG position. NWCG Task Books can be downloaded from the Internet at <http://www.nwcg.gov/pms/taskbook/taskbook.htm>

## 3. Training

Each prescribed burn position has identified required training and identified recommended training to support knowledge and skills. **Required position prerequisites must be attained prior to issuance of the task book for that position.** Training that is recommended to support knowledge and skills is not required; however, if the training is not completed the employee must be able to demonstrate they have the knowledge and skills contained in the recommended coursework.

## 4. Physical Fitness

Physical fitness standards for NWCG prescribed burn positions are established at the national level. Agencies may determine the method of evaluating the physical fitness level of their personnel, however, the testing method must be measureable. The Minnesota DNR gives employees the option of using one of three methods to measure their fitness level for NWCG qualifications: Work Capacity Test, the Step Test or the 1.5 mile run.

<b>Work Category</b>	<b>Work Capacity Test</b>	<b>Step Test</b>	<b>1.5 mile timed run</b>
Arduous	<b>Pack Test</b> – 3 miles walking with a 45 pound pack in 45 minutes or less	Score of 45 or higher	Capable of running a 1.5 mile course in 11 minutes and 40 seconds or less.
Moderate	<b>Field Test</b> – 2 miles walking with a 25-pound pack in 30 minutes or less.	Score of 40 to 44	Capable of running a 1.5 mile course in 12 minutes and 55 seconds or less.
Light	<b>Walk Test</b> – 1 mile walking with no pack in 16 minutes or less.	Score of 35 to 39	Capable of running a 1.5 mile course in 14 minutes or less

## 5. Certification and Recertification

Refer to certification guidelines outlined in section IV.A.6. in this document.

## 6. Position Currency

The maximum time allowed for maintaining currency of prescribed burn positions is 5 years.

Currency can be maintained in the following ways:

- Performance in the position qualified for within the 5 year period.
- Performance in a higher position for which that position is a prerequisite within the 5 year period.
- Position identified as “Other position assignments that will maintain currency” in the Minnesota Supplement to the Wildland and Prescribed Fire Qualification Guide.

For example, currency as a Firing Boss (FIRB) would be maintained by either performing as a FIRB once in a five year period or performing as an Incident Commander Type 4 (ICT4), any Single Resource Boss (Engine Boss, Crew Boss etc) or performing in a higher position that FIRB is a prerequisite for such as Prescribed Fire Burn Boss Type 2 (RXB2).

## V. Obtaining Prescribed Burn Supplies and Equipment

### A. Private Vendors

Prescribed burning supplies and equipment may be purchased from private vendors. Department of Administration Authority for Local Purchase guidelines and requirements must be followed. All supplies and equipment must meet National Fire Protection Administration (NFPA) Guidelines.

### B. Northeast Interagency Fire Cache

DNR Divisions can also acquire prescribed burning supplies and equipment from the Northeast Interagency Fire Cache located in Grand Rapids Minnesota. The