

M  
I  
N  
N  
E  
S  
O  
T  
A

2007 (revised 4/30/08)

# Public Stumpage Price Review and Price Indexes

## Highlights

In 2007, a total 2.1 million cords of pulpwood and bolts were sold by Minnesota's public agencies, including ~722,500 cords of resold volume that was forfeited during 2006.

Average stumpage prices received for all-species pulpwood & bolts dropped from \$36.36 per cord in 2006 to \$23.13 per cord in 2007, a year-to-year decrease of 36%.

In 2007, average R&W and Jack Pine stumpage prices received for pulpwood and bolts ranged from \$27.37 to \$33.52 per cord.

Average aspen stumpage prices received for pulpwood and bolts ranged from \$27.01 to \$28.44 per cord.

Average oak stumpage prices received for pulpwood and bolts ranged from \$17.46 to \$20.85 per cord.

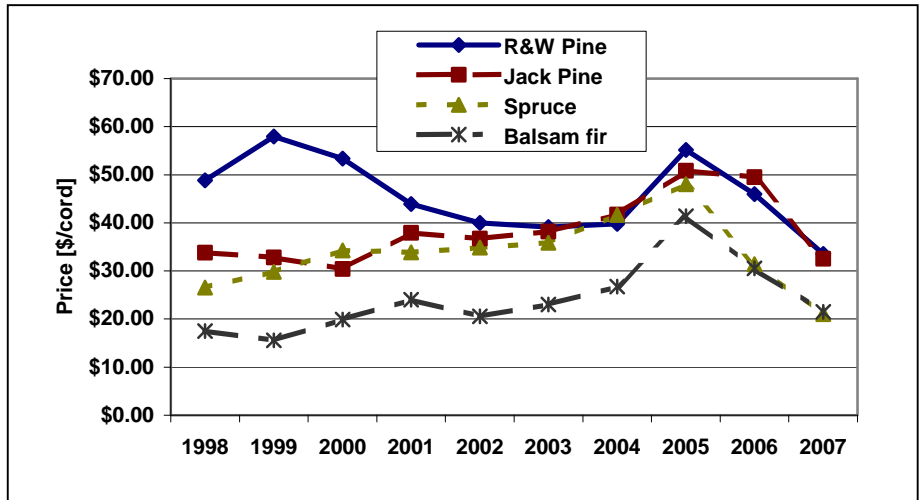


Figure 1. Public Softwood Pulp&Bolt Stumpage Prices, 1998-2007.

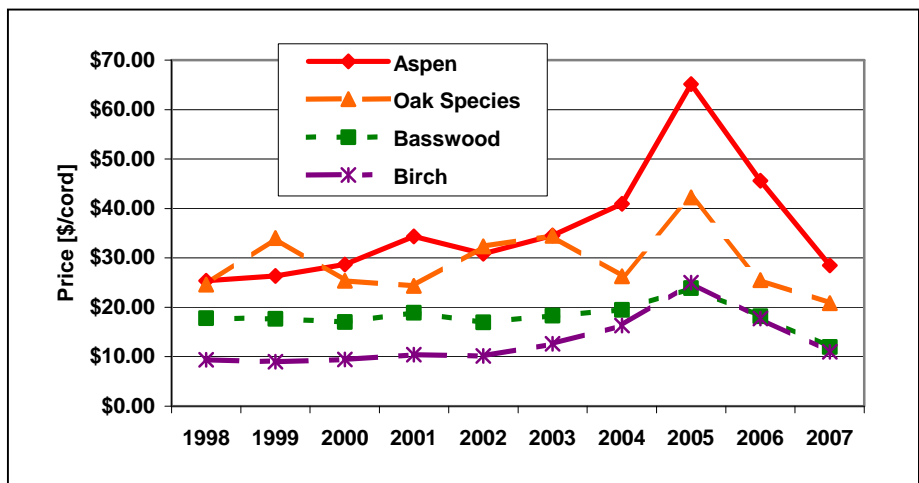


Figure 2. Public Hardwood Pulp&Bolt Stumpage Prices, 1998-2007.

For information about the Minnesota Stumpage Price Review, contact: Don Deckard, State Forest Economist, Minnesota Department of Natural Resources, Division of Forestry, 500 Lafayette Road, St. Paul, Minnesota 55155-4044; phone: (651) 259-5287, email: donald.deckard@dnr.state.mn.us.

In 2007, a total 18.2 MMBF of sawtimber was sold by Minnesota's public agencies as compared to 18.6 MMBF sold in 2006.

Average stumpage prices received for all-species sawtimber dropped from \$167.09 per MBF in 2006 to \$107.09 per MBF in 2007, a year-to-year decrease of 36%.

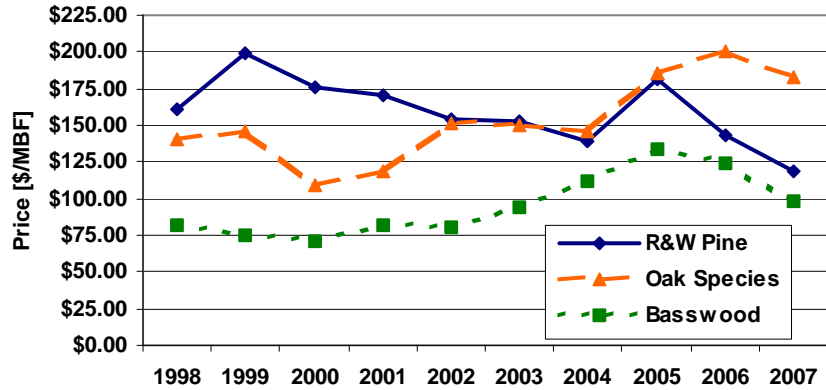


Figure 3. Public Sawtimber Prices, 1998-2007.

## Purpose and Methods

This report contains average stumpage prices received by all Minnesota public agencies in 2007 for the following product classifications: sawtimber, bolts, pulpwood, and fuelwood. Information presented may be useful for determining the total volume and value of stumpage sold and for comparing relative volumes and values of sawtimber and pulpwood sold during the reporting period by public agencies in Minnesota.

The various public agencies have different fiscal years. The reporting period for each agency is included as part of the agencies information. The fiscal year used by the counties is the same as the calendar year. Federal agencies (USFS and BIA) fiscal year runs from October 1 – September 30. The state's (Minnesota DNR) fiscal year runs from July 1 – June 30, but to make the data reported more consistent with the other agencies, the time period for the data included in the report is for CY2007. Some agencies report their data based on timber appraisal estimates from timber sales sold, while others report based on actual scale receipts from timber harvested and scaled. The reporting basis for each agency is included in the report.

**DISCLAIMER:** The reported timber sales data includes different products and units of measure. All volumes in MBF and cords and the associated values by product are reported as received from the various agencies. The reader should use caution when comparing the prices shown in this report with actual prices received or expected on any specific timber sale. Individual sale prices may vary significantly from the averages shown in this report because of variability in both economic and physical conditions.

### Definitions

**Average price:** volume weighted (mean) calculated by multiplying the corresponding volume by price for each species/species group and product/product group.

**Board foot:** a piece of wood 1" thick by 12" long by 12" wide.

**Bolt:** short length log, in Lake States usually 100" in length with minimum 6" top diameter. Depending on species and quality, may be suitable for the production of dimensional lumber (2x4s), industrial grade lumber (pallets), for manufacturing turned forest products, or for peeling.

**Cord:** unit of cubic volume measure 4 feet wide, 4 feet high, and 8 feet long, or equivalent, containing 128 cubic feet of well stacked roundwood, including bark and air space.

**MBF:** one thousand board feet; for stumpage purposes, a unit of volume measured using log or tree scale.

**MMBF:** one million board feet; for stumpage purposes, a unit of volume measured using log or tree scale.

**Pulpwood:** stem suitable for fiber used for paper and oriented strand board (OSB) manufacturing.

**Pulp & Bolts:** stem containing the mixed products of pulpwood and bolts.

**Sawtimber:** stems containing logs suitable for production of graded boards and/or dimensional lumber.

**Stumpage:** the value of standing trees.

**SUMMARY TABLE – ALL PUBLIC AGENCIES**

**All Agencies<sup>a</sup>**

Species Name	Sawtimber*		Bolts		Pulpwood		Pulp and Bolts		Fuelwood		
	MBF	Avg Price	Cords	Avg Price	Cords	Avg Price	Cords	Avg Price	Cords	Avg Price	
Aspen	44.3	\$41.33	15,615.0	\$32.74	540,709.4	\$27.52	596,666.0	\$28.44	17.0	\$1.41	
Balm of Gilead	0.0	\$0.00	1,096.0	\$27.55	12,523.0	\$23.70	5,125.0	\$17.00	0.0	\$0.00	
Birch Species	625.6	\$27.24	0.0	\$0.00	79,679.5	\$9.68	78,223.6	\$10.99	1,858.0	\$7.58	
Ash Species	189.2	\$38.21	7.0	\$15.00	16,731.1	\$7.65	9,836.0	\$6.21	565.0	\$1.99	
Elm Species	53.0	\$85.22	0.0	\$0.00	28.0	\$13.08	0.0	\$0.00	0.0	\$0.00	
Oak Species	1,419.5	\$182.83	172.0	\$26.10	5,877.9	\$16.23	22,116.1	\$20.85	1,340.0	\$8.20	
Basswood	668.0	\$97.73	60.0	\$16.61	8,846.0	\$10.98	12,096.0	\$10.35	403.0	\$5.93	
Other Hardwoods	2,346.3	\$52.91	0.0	\$0.00	18,491.7	\$12.55	22,635.0	\$11.85	1,583.0	\$3.48	
Balsam Fir	9.7	\$76.47	0.0	\$0.00	90,990.7	\$18.36	20,680.0	\$21.47	0.0	\$0.00	
Spruce Species	111.0	\$96.41	0.0	\$0.00	91,112.3	\$21.94	77,767.5	\$20.97	0.0	\$0.00	
Black Spruce	0.0	\$0.00	0.0	\$0.00	14,839.0	\$0.76	166.0	\$30.29	0.0	\$0.00	
Tamarack	0.0	\$0.00	0.0	\$0.00	27,489.2	\$5.40	50,160.0	\$3.18	4,546.0	\$1.94	
White Cedar	3.3	\$16.20	0.0	\$0.00	1,952.0	\$9.35	830.0	\$6.39	0.0	\$0.00	
Jack Pine	352.7	\$115.21	95.0	\$57.20	16,280.0	\$28.50	94,628.0	\$32.07	1,602.4	\$1.74	
Red & White Pine	12,311.9	\$114.04	66.0	\$36.68	31,169.2	\$27.15	41,490.0	\$33.52	0.0	\$0.00	
Maple	102.3	\$137.17	0.0	\$0.00	40,782.2	\$7.91	24,450.0	\$8.30	120.0	\$2.33	
Spruce	0.0	\$0.00	0.0	\$0.00	11.0	\$22.76	103.0	\$30.91	0.0	\$0.00	
<b>All Agencies</b>	<b>All Species</b>	<b>18,236.7</b>	<b>\$106.92</b>	<b>17,111.0</b>	<b>\$32.43</b>	<b>997,512.2</b>	<b>\$22.03</b>	<b>1,056,972.2</b>	<b>\$24.32</b>	<b>12,034.4</b>	<b>\$3.82</b>

\*Sawtimber volumes and prices include a variety of individual agency specifications and are presented as reported.

<sup>a</sup>Sold volume includes ~722,500 cords of resold stumpage permits that were forfeited during CY2006.

**MINNESOTA COUNTIES**

Species Name	Sawtimber		Bolts		Pulpwood		Pulp and Bolts		Fuelwood		
	MBF	Avg Price	Cords	Avg Price	Cords	Avg Price	Cords	Avg Price	Cords	Avg Price	
Aspen	0.0	\$0.00	0.0	\$0.00	30,584.0	\$22.08	0.0	\$0.00	0.0	\$0.00	
Birch Species	0.0	\$0.00	0.0	\$0.00	4,310.0	\$10.75	0.0	\$0.00	0.0	\$0.00	
Ash Species	0.0	\$0.00	0.0	\$0.00	1,214.0	\$14.20	0.0	\$0.00	0.0	\$0.00	
Oak Species	0.0	\$0.00	0.0	\$0.00	2,036.0	\$28.17	0.0	\$0.00	0.0	\$0.00	
Basswood	0.0	\$0.00	0.0	\$0.00	1,211.0	\$16.02	0.0	\$0.00	0.0	\$0.00	
Other Hardwoods	0.0	\$0.00	0.0	\$0.00	3,195.0	\$9.85	0.0	\$0.00	0.0	\$0.00	
Balsam Fir	0.0	\$0.00	0.0	\$0.00	1,871.0	\$23.58	200.0	\$0.25	0.0	\$0.00	
Spruce Species	0.0	\$0.00	0.0	\$0.00	661.0	\$23.91	0.0	\$0.00	0.0	\$0.00	
Tamarack	0.0	\$0.00	0.0	\$0.00	197.0	\$9.01	197.0	\$0.11	0.0	\$0.00	
Red & White Pine	0.0	\$0.00	0.0	\$0.00	1,658.0	\$26.10	41.0	\$0.25	0.0	\$0.00	
Maple	0.0	\$0.00	0.0	\$0.00	6,707.0	\$8.38	0.0	\$0.00	0.0	\$0.00	
<b>Aitkin Co.</b>	<b>All Species</b>	<b>0.0</b>	<b>\$0.00</b>	<b>0.0</b>	<b>\$0.00</b>	<b>53,644.0</b>	<b>\$18.80</b>	<b>438.0</b>	<b>\$0.19</b>	<b>0.0</b>	<b>\$0.00</b>

**Becker Co. Reporting Period: 01/07 to 12/07 Reporting Basis: Scale Receipts**

Species Name	Sawtimber		Bolts		Pulpwood		Pulp and Bolts		Fuelwood	
	MBF	Avg Price	Cords	Avg Price	Cords	Avg Price	Cords	Avg Price	Cords	Avg Price
Aspen	0.0	\$0.00	0.0	\$0.00	10,845.0	\$30.78	0.0	\$0.00	0.0	\$0.00
Balm of Gilead	0.0	\$0.00	0.0	\$0.00	15.0	\$40.00	0.0	\$0.00	0.0	\$0.00
Birch Species	0.0	\$0.00	0.0	\$0.00	86.0	\$11.83	1,410.0	\$10.66	0.0	\$0.00
Oak Species	0.0	\$0.00	0.0	\$0.00	27.0	\$7.93	54.0	\$10.96	0.0	\$0.00
Basswood	0.0	\$0.00	0.0	\$0.00	1.0	\$5.40	130.0	\$14.40	0.0	\$0.00
Balsam Fir	0.0	\$0.00	0.0	\$0.00	815.0	\$24.89	0.0	\$0.00	0.0	\$0.00
Black Spruce	0.0	\$0.00	0.0	\$0.00	40.0	\$15.00	166.0	\$30.29	0.0	\$0.00
Tamarack	0.0	\$0.00	0.0	\$0.00	2.0	\$4.00	300.0	\$6.97	0.0	\$0.00
Red & White Pine	0.0	\$0.00	0.0	\$0.00	10.0	\$45.39	975.0	\$30.26	0.0	\$0.00
Spruce	0.0	\$0.00	0.0	\$0.00	5.0	\$21.28	0.0	\$0.00	0.0	\$0.00

**Becker Co. All Species 0.0 \$0.00 0.0 \$0.00 11,846.0 \$30.14 3,035.0 \$17.83 0.0 \$0.00**

**Beltrami Co. Reporting Period: 01/07 to 12/07 Reporting Basis: Scale Receipts**

Species Name	Sawtimber		Bolts		Pulpwood		Pulp and Bolts		Fuelwood	
	MBF	Avg Price	Cords	Avg Price	Cords	Avg Price	Cords	Avg Price	Cords	Avg Price
Aspen	0.0	\$0.00	15,615.0	\$32.74	0.0	\$0.00	0.0	\$0.00	0.0	\$0.00
Balm of Gilead	0.0	\$0.00	1,096.0	\$27.55	0.0	\$0.00	0.0	\$0.00	0.0	\$0.00
Birch Species	0.0	\$0.00	0.0	\$0.00	2,300.0	\$19.63	0.0	\$0.00	0.0	\$0.00
Ash Species	0.0	\$0.00	0.0	\$0.00	274.0	\$16.01	0.0	\$0.00	0.0	\$0.00
Elm Species	0.0	\$0.00	0.0	\$0.00	10.0	\$22.22	0.0	\$0.00	0.0	\$0.00
Oak Species	0.0	\$0.00	147.0	\$20.91	318.0	\$17.55	0.0	\$0.00	0.0	\$0.00
Basswood	0.0	\$0.00	60.0	\$16.61	1,836.0	\$19.04	0.0	\$0.00	0.0	\$0.00
Other Hardwoods	0.0	\$0.00	0.0	\$0.00	128.0	\$21.84	0.0	\$0.00	0.0	\$0.00
Balsam Fir	0.0	\$0.00	0.0	\$0.00	3,056.0	\$28.34	0.0	\$0.00	0.0	\$0.00
Spruce Species	0.0	\$0.00	0.0	\$0.00	825.0	\$18.48	0.0	\$0.00	0.0	\$0.00
Tamarack	0.0	\$0.00	0.0	\$0.00	236.0	\$16.45	0.0	\$0.00	0.0	\$0.00
White Cedar	0.0	\$0.00	0.0	\$0.00	21.0	\$9.67	0.0	\$0.00	0.0	\$0.00
Jack Pine	0.0	\$0.00	0.0	\$0.00	1,875.0	\$41.87	0.0	\$0.00	0.0	\$0.00
Red & White Pine	238.2	\$165.62	0.0	\$0.00	216.0	\$27.86	0.0	\$0.00	0.0	\$0.00
Maple	0.0	\$0.00	0.0	\$0.00	566.0	\$18.18	0.0	\$0.00	0.0	\$0.00

**Beltrami Co. All Species 238.2 \$165.62 16,918.0 \$32.24 11,661.0 \$25.20 0.0 \$0.00 0.0 \$0.00**

<b>Carlton Co.</b>		<b>Reporting Period: 1/07 to 12/07</b>				<b>Reporting Basis: Appraisal Reports</b>					
<u>Species Name</u>	<u>Sawtimber</u>		<u>Bolts</u>		<u>Pulpwood</u>		<u>Pulp and Bolts</u>		<u>Fuelwood</u>		
	<u>MBF</u>	<u>Avg Price</u>	<u>Cords</u>	<u>Avg Price</u>	<u>Cords</u>	<u>Avg Price</u>	<u>Cords</u>	<u>Avg Price</u>	<u>Cords</u>	<u>Avg Price</u>	
Aspen	0.0	\$0.00	0.0	\$0.00	13,821.0	\$29.55	0.0	\$0.00	0.0	\$0.00	
Balm of Gilead	0.0	\$0.00	0.0	\$0.00	226.0	\$23.92	0.0	\$0.00	0.0	\$0.00	
Birch Species	0.0	\$0.00	0.0	\$0.00	3,107.0	\$13.50	0.0	\$0.00	0.0	\$0.00	
Ash Species	0.0	\$0.00	0.0	\$0.00	1,966.0	\$10.00	0.0	\$0.00	0.0	\$0.00	
Basswood	0.0	\$0.00	0.0	\$0.00	846.0	\$13.37	0.0	\$0.00	0.0	\$0.00	
Balsam Fir	0.0	\$0.00	0.0	\$0.00	1,269.0	\$24.21	0.0	\$0.00	0.0	\$0.00	
Black Spruce	0.0	\$0.00	0.0	\$0.00	14,799.0	\$0.72	0.0	\$0.00	0.0	\$0.00	
Maple	0.0	\$0.00	0.0	\$0.00	2,469.0	\$13.15	0.0	\$0.00	0.0	\$0.00	
Spruce	0.0	\$0.00	0.0	\$0.00	6.0	\$24.00	0.0	\$0.00	0.0	\$0.00	
<b>Carlton Co.</b>	<b>All Species</b>	<b>0.0</b>	<b>\$0.00</b>	<b>0.0</b>	<b>\$0.00</b>	<b>38,509.0</b>	<b>\$14.56</b>	<b>0.0</b>	<b>\$0.00</b>	<b>0.0</b>	<b>\$0.00</b>

<b>Cass Co.</b>		<b>Reporting Period: 01/07 to 12/07</b>				<b>Reporting Basis: Appraisal Reports</b>					
<u>Species Name</u>	<u>Sawtimber</u>		<u>Bolts</u>		<u>Pulpwood</u>		<u>Pulp and Bolts</u>		<u>Fuelwood</u>		
	<u>MBF</u>	<u>Avg Price</u>	<u>Cords</u>	<u>Avg Price</u>	<u>Cords</u>	<u>Avg Price</u>	<u>Cords</u>	<u>Avg Price</u>	<u>Cords</u>	<u>Avg Price</u>	
Aspen	0.0	\$0.00	0.0	\$0.00	0.0	\$0.00	68,744.0	\$28.45	0.0	\$0.00	
Birch Species	0.0	\$0.00	0.0	\$0.00	0.0	\$0.00	16,531.0	\$17.92	0.0	\$0.00	
Ash Species	0.0	\$0.00	0.0	\$0.00	0.0	\$0.00	161.0	\$18.19	0.0	\$0.00	
Oak Species	0.0	\$0.00	0.0	\$0.00	0.0	\$0.00	7,785.0	\$22.79	0.0	\$0.00	
Basswood	0.0	\$0.00	0.0	\$0.00	0.0	\$0.00	1,839.0	\$18.92	0.0	\$0.00	
Other Hardwoods	0.0	\$0.00	0.0	\$0.00	0.0	\$0.00	0.0	\$0.00	800.0	\$2.50	
Balsam Fir	0.0	\$0.00	0.0	\$0.00	0.0	\$0.00	1,347.0	\$22.47	0.0	\$0.00	
Spruce Species	0.0	\$0.00	0.0	\$0.00	0.0	\$0.00	184.0	\$34.11	0.0	\$0.00	
Tamarack	0.0	\$0.00	0.0	\$0.00	0.0	\$0.00	40.0	\$0.63	0.0	\$0.00	
Jack Pine	0.0	\$0.00	0.0	\$0.00	1,310.0	\$36.03	4,112.0	\$34.39	0.0	\$0.00	
Red & White Pine	*65.1	*\$192.54	66.0	\$36.68	2.0	\$15.00	297.0	\$25.74	0.0	\$0.00	
Maple	0.0	\$0.00	0.0	\$0.00	0.0	\$0.00	5,827.0	\$13.96	0.0	\$0.00	
Spruce	0.0	\$0.00	0.0	\$0.00	0.0	\$0.00	103.0	\$30.91	0.0	\$0.00	
<b>Cass Co.</b>	<b>All Species</b>	<b>65.1</b>	<b>\$192.54</b>	<b>66.0</b>	<b>\$36.68</b>	<b>1,312.0</b>	<b>\$36.00</b>	<b>106,970.0</b>	<b>\$25.59</b>	<b>800.0</b>	<b>\$2.50</b>

\* Reported sold as MBF based on minimum 10 inch d.b.h. and 8 inch top d.i.b.

**Clearwater Co. Reporting Period: 01/07 to 12/07**

**Reporting Basis: Appraisal Reports**

Species Name	Sawtimber		Bolts		Pulpwood		Pulp and Bolts		Fuelwood	
	MBF	Avg Price	Cords	Avg Price	Cords	Avg Price	Cords	Avg Price	Cords	Avg Price
Aspen	0.0	\$0.00	0.0	\$0.00	14,738.5	\$32.86	0.0	\$0.00	0.0	\$0.00
Balm of Gilead	0.0	\$0.00	0.0	\$0.00	124.0	\$21.00	0.0	\$0.00	0.0	\$0.00
Birch Species	0.0	\$0.00	0.0	\$0.00	1,417.0	\$8.79	0.0	\$0.00	0.0	\$0.00
Ash Species	0.0	\$0.00	0.0	\$0.00	10.0	\$8.00	0.0	\$0.00	0.0	\$0.00
Elm Species	0.0	\$0.00	0.0	\$0.00	18.0	\$8.00	0.0	\$0.00	0.0	\$0.00
Oak Species	0.0	\$0.00	0.0	\$0.00	973.0	\$10.02	0.0	\$0.00	0.0	\$0.00
Basswood	23.9	\$85.00	0.0	\$0.00	1,417.0	\$6.35	0.0	\$0.00	403.0	\$5.93
Balsam Fir	0.0	\$0.00	0.0	\$0.00	522.0	\$23.29	0.0	\$0.00	0.0	\$0.00
Spruce Species	11.0	\$39.35	0.0	\$0.00	319.0	\$22.73	0.0	\$0.00	0.0	\$0.00
Jack Pine	0.0	\$0.00	0.0	\$0.00	1,193.0	\$25.57	0.0	\$0.00	127.0	\$2.00
Red & White Pine	80.9	\$84.25	0.0	\$0.00	669.0	\$22.36	0.0	\$0.00	0.0	\$0.00
Maple	0.0	\$0.00	0.0	\$0.00	633.0	\$8.68	0.0	\$0.00	0.0	\$0.00
<b>Clearwater Co. All Species</b>	<b>115.7</b>	<b>\$80.14</b>	<b>0.0</b>	<b>\$0.00</b>	<b>22,033.5</b>	<b>\$26.72</b>	<b>0.0</b>	<b>\$0.00</b>	<b>530.0</b>	<b>\$4.99</b>

**Crow Wing Co. Reporting Period: 01/07 to 12/07**

**Reporting Basis: Appraisal Reports**

Species Name	Sawtimber		Bolts		Pulpwood		Pulp and Bolts		Fuelwood	
	MBF	Avg Price	Cords	Avg Price	Cords	Avg Price	Cords	Avg Price	Cords	Avg Price
Aspen	0.0	\$0.00	0.0	\$0.00	23,681.0	\$26.15	0.0	\$0.00	0.0	\$0.00
Birch Species	0.0	\$0.00	0.0	\$0.00	0.0	\$0.00	4,510.0	\$12.28	0.0	\$0.00
Ash Species	0.0	\$0.00	0.0	\$0.00	155.0	\$9.35	0.0	\$0.00	0.0	\$0.00
Oak Species	0.0	\$0.00	0.0	\$0.00	0.0	\$0.00	3,364.0	\$14.21	0.0	\$0.00
Basswood	0.0	\$0.00	0.0	\$0.00	0.0	\$0.00	673.0	\$11.08	0.0	\$0.00
Other Hardwoods	0.0	\$0.00	0.0	\$0.00	0.0	\$0.00	0.0	\$0.00	20.0	\$8.55
Balsam Fir	0.0	\$0.00	0.0	\$0.00	388.0	\$23.58	0.0	\$0.00	0.0	\$0.00
Spruce Species	0.0	\$0.00	0.0	\$0.00	0.0	\$0.00	34.0	\$20.12	0.0	\$0.00
Tamarack	0.0	\$0.00	0.0	\$0.00	0.0	\$0.00	0.0	\$0.00	1,400.0	\$1.00
Jack Pine	0.0	\$0.00	0.0	\$0.00	0.0	\$0.00	1,051.0	\$42.74	0.0	\$0.00
Red & White Pine	56.5	\$140.27	0.0	\$0.00	6.0	\$18.67	180.0	\$28.34	0.0	\$0.00
Maple	0.0	\$0.00	0.0	\$0.00	1,884.0	\$8.72	0.0	\$0.00	0.0	\$0.00
<b>Crow Wing Co. All Species</b>	<b>56.5</b>	<b>\$140.27</b>	<b>0.0</b>	<b>\$0.00</b>	<b>26,114.0</b>	<b>\$24.76</b>	<b>9,812.0</b>	<b>\$16.45</b>	<b>1,420.0</b>	<b>\$1.11</b>

**Hubbard Co. Reporting Period: 01/07 to 12/07 Reporting Basis: Appraisal Reports**

Species Name	Sawtimber		Bolts		Pulpwood		Pulp and Bolts		Fuelwood	
	MBF	Avg Price	Cords	Avg Price	Cords	Avg Price	Cords	Avg Price	Cords	Avg Price
Aspen	0.0	\$0.00	0.0	\$0.00	685.0	\$23.06	14,513.0	\$35.40	0.0	\$0.00
Balm of Gilead	0.0	\$0.00	0.0	\$0.00	15.0	\$8.00	0.0	\$0.00	0.0	\$0.00
Birch Species	0.0	\$0.00	0.0	\$0.00	1,019.0	\$8.87	155.0	\$11.89	0.0	\$0.00
Oak Species	0.0	\$0.00	25.0	\$56.60	240.0	\$7.85	0.0	\$0.00	0.0	\$0.00
Basswood	0.0	\$0.00	0.0	\$0.00	0.0	\$0.00	80.0	\$4.00	0.0	\$0.00
Other Hardwoods	0.0	\$0.00	0.0	\$0.00	145.0	\$6.53	0.0	\$0.00	0.0	\$0.00
Balsam Fir	0.0	\$0.00	0.0	\$0.00	59.0	\$18.75	300.0	\$24.38	0.0	\$0.00
Spruce Species	0.0	\$0.00	0.0	\$0.00	3.0	\$16.00	635.0	\$33.69	0.0	\$0.00
Tamarack	0.0	\$0.00	0.0	\$0.00	0.0	\$0.00	595.0	\$14.87	0.0	\$0.00
Jack Pine	0.0	\$0.00	95.0	\$57.20	80.0	\$19.55	5,725.0	\$45.44	0.0	\$0.00
Red & White Pine	0.0	\$0.00	0.0	\$0.00	10.0	\$19.50	235.0	\$24.18	0.0	\$0.00
Maple	0.0	\$0.00	0.0	\$0.00	18.0	\$3.78	0.0	\$0.00	0.0	\$0.00
<b>Hubbard Co. All Species</b>	<b>0.0</b>	<b>\$0.00</b>	<b>120.0</b>	<b>\$57.08</b>	<b>2,274.0</b>	<b>\$13.53</b>	<b>22,238.0</b>	<b>\$36.84</b>	<b>0.0</b>	<b>\$0.00</b>

**Itasca Co. Reporting Period: 01/07 to 12/07 Reporting Basis: Appraisal Reports**

Species Name	Sawtimber		Bolts		Pulpwood		Pulp and Bolts		Fuelwood	
	MBF	Avg Price	Cords	Avg Price	Cords	Avg Price	Cords	Avg Price	Cords	Avg Price
Aspen	0.0	\$0.00	0.0	\$0.00	0.0	\$0.00	44,043.0	\$27.09	0.0	\$0.00
Balm of Gilead	0.0	\$0.00	0.0	\$0.00	0.0	\$0.00	1,606.0	\$25.23	0.0	\$0.00
Birch Species	0.0	\$0.00	0.0	\$0.00	0.0	\$0.00	7,190.0	\$8.12	0.0	\$0.00
Ash Species	0.0	\$0.00	0.0	\$0.00	0.0	\$0.00	913.0	\$13.67	0.0	\$0.00
Oak Species	0.0	\$0.00	0.0	\$0.00	0.0	\$0.00	1,147.0	\$16.98	0.0	\$0.00
Basswood	0.0	\$0.00	0.0	\$0.00	0.0	\$0.00	1,168.0	\$10.72	0.0	\$0.00
Balsam Fir	0.0	\$0.00	0.0	\$0.00	0.0	\$0.00	6,408.0	\$25.57	0.0	\$0.00
Spruce Species	0.0	\$0.00	0.0	\$0.00	0.0	\$0.00	7,123.0	\$31.13	0.0	\$0.00
Tamarack	0.0	\$0.00	0.0	\$0.00	0.0	\$0.00	863.0	\$5.44	0.0	\$0.00
White Cedar	0.0	\$0.00	0.0	\$0.00	0.0	\$0.00	29.0	\$10.07	0.0	\$0.00
Jack Pine	0.0	\$0.00	0.0	\$0.00	0.0	\$0.00	6,902.0	\$39.80	0.0	\$0.00
Red & White Pine	0.0	\$0.00	0.0	\$0.00	0.0	\$0.00	7,620.0	\$54.42	0.0	\$0.00
Maple	0.0	\$0.00	0.0	\$0.00	0.0	\$0.00	2,801.0	\$7.56	0.0	\$0.00
<b>Itasca Co. All Species</b>	<b>0.0</b>	<b>\$0.00</b>	<b>0.0</b>	<b>\$0.00</b>	<b>0.0</b>	<b>\$0.00</b>	<b>87,813.0</b>	<b>\$27.76</b>	<b>0.0</b>	<b>\$0.00</b>

**Koochiching Co. Reporting Period: 01/07 to 12/07**

**Reporting Basis: Appraisal Reports**

Species Name	Sawtimber		Bolts		Pulpwood		Pulp and Bolts		Fuelwood	
	MBF	Avg Price	Cords	Avg Price	Cords	Avg Price	Cords	Avg Price	Cords	Avg Price
Aspen	0.0	\$0.00	0.0	\$0.00	61,428.0	\$30.09	0.0	\$0.00	0.0	\$0.00
Balm of Gilead	0.0	\$0.00	0.0	\$0.00	7,494.0	\$27.18	0.0	\$0.00	0.0	\$0.00
Birch Species	0.0	\$0.00	0.0	\$0.00	4,074.0	\$8.47	0.0	\$0.00	0.0	\$0.00
Ash Species	0.0	\$0.00	0.0	\$0.00	2,606.5	\$8.24	0.0	\$0.00	0.0	\$0.00
Basswood	0.0	\$0.00	0.0	\$0.00	557.0	\$8.42	0.0	\$0.00	0.0	\$0.00
Other Hardwoods	0.0	\$0.00	0.0	\$0.00	85.0	\$4.47	0.0	\$0.00	0.0	\$0.00
Balsam Fir	0.0	\$0.00	0.0	\$0.00	11,421.0	\$17.55	0.0	\$0.00	0.0	\$0.00
Spruce Species	0.0	\$0.00	0.0	\$0.00	10,156.0	\$21.10	0.0	\$0.00	0.0	\$0.00
Tamarack	0.0	\$0.00	0.0	\$0.00	1,172.0	\$8.87	0.0	\$0.00	0.0	\$0.00
White Cedar	0.0	\$0.00	0.0	\$0.00	479.0	\$5.56	0.0	\$0.00	0.0	\$0.00
Jack Pine	0.0	\$0.00	0.0	\$0.00	2,253.0	\$34.43	0.0	\$0.00	0.0	\$0.00
Red & White Pine	0.0	\$0.00	0.0	\$0.00	344.0	\$17.07	0.0	\$0.00	0.0	\$0.00
Maple	0.0	\$0.00	0.0	\$0.00	721.0	\$9.82	0.0	\$0.00	0.0	\$0.00
<b>Koochiching Co. All Species</b>	<b>0.0</b>	<b>\$0.00</b>	<b>0.0</b>	<b>\$0.00</b>	<b>102,790.5</b>	<b>\$25.60</b>	<b>0.0</b>	<b>\$0.00</b>	<b>0.0</b>	<b>\$0.00</b>

**Lake Co. Reporting Period: 01/07 to 12/07**

**Reporting Basis: Appraisal Reports**

Species Name	Sawtimber		Bolts		Pulpwood		Pulp and Bolts		Fuelwood	
	MBF	Avg Price	Cords	Avg Price	Cords	Avg Price	Cords	Avg Price	Cords	Avg Price
Aspen	0.0	\$0.00	0.0	\$0.00	6,729.0	\$22.78	0.0	\$0.00	0.0	\$0.00
Balm of Gilead	0.0	\$0.00	0.0	\$0.00	450.0	\$12.12	0.0	\$0.00	0.0	\$0.00
Birch Species	0.0	\$0.00	0.0	\$0.00	760.0	\$11.48	3,752.0	\$13.53	0.0	\$0.00
Ash Species	2.0	\$85.64	7.0	\$15.00	306.0	\$5.62	1,113.0	\$7.65	0.0	\$0.00
Basswood	1.9	\$73.68	0.0	\$0.00	92.0	\$8.87	132.0	\$8.42	0.0	\$0.00
Other Hardwoods	0.0	\$0.00	0.0	\$0.00	0.0	\$0.00	115.0	\$7.67	0.0	\$0.00
Balsam Fir	0.0	\$0.00	0.0	\$0.00	990.0	\$10.03	174.0	\$16.00	0.0	\$0.00
Spruce Species	0.0	\$0.00	0.0	\$0.00	724.0	\$15.09	190.0	\$21.71	0.0	\$0.00
Tamarack	0.0	\$0.00	0.0	\$0.00	65.0	\$4.98	0.0	\$0.00	0.0	\$0.00
White Cedar	0.0	\$0.00	0.0	\$0.00	9.0	\$6.44	110.0	\$23.25	0.0	\$0.00
Jack Pine	0.0	\$0.00	0.0	\$0.00	40.0	\$17.25	0.0	\$0.00	0.0	\$0.00
Red & White Pine	0.0	\$0.00	0.0	\$0.00	10.0	\$7.60	215.0	\$14.65	0.0	\$0.00
Maple	2.2	\$129.55	0.0	\$0.00	744.0	\$10.70	2,153.0	\$11.53	0.0	\$0.00
<b>Lake Co. All Species</b>	<b>6.1</b>	<b>\$97.85</b>	<b>7.0</b>	<b>\$15.00</b>	<b>10,919.0</b>	<b>\$18.32</b>	<b>7,954.0</b>	<b>\$12.41</b>	<b>0.0</b>	<b>\$0.00</b>



<b>Pine Co.</b>		<b>Reporting Period: 01/07 to 12/07</b>				<b>* Reporting Basis: Scale Receipts</b>					
<u>Species Name</u>	<u>Sawtimber</u>		<u>Bolts</u>		<u>Pulpwood</u>		<u>Pulp and Bolts</u>		<u>Fuelwood</u>		
	<u>MBF</u>	<u>Avg Price</u>	<u>Cords</u>	<u>Avg Price</u>	<u>Cords</u>	<u>Avg Price</u>	<u>Cords</u>	<u>Avg Price</u>	<u>Cords</u>	<u>Avg Price</u>	
Aspen	0.0	\$0.00	0.0	\$0.00	5,588.0	\$69.50	0.0	\$0.00	0.0	\$0.00	
Birch Species	0.0	\$0.00	0.0	\$0.00	2,011.0	\$26.02	0.0	\$0.00	0.0	\$0.00	
Ash Species	0.0	\$0.00	0.0	\$0.00	0.0	\$0.00	287.0	\$15.93	0.0	\$0.00	
Oak Species	0.0	\$0.00	0.0	\$0.00	0.0	\$0.00	285.0	\$29.73	0.0	\$0.00	
Basswood	0.0	\$0.00	0.0	\$0.00	0.0	\$0.00	150.0	\$12.47	0.0	\$0.00	
Other Hardwoods	0.0	\$0.00	0.0	\$0.00	157.0	\$17.32	0.0	\$0.00	0.0	\$0.00	
Balsam Fir	0.0	\$0.00	0.0	\$0.00	56.0	\$19.20	0.0	\$0.00	0.0	\$0.00	
Tamarack	0.0	\$0.00	0.0	\$0.00	16.0	\$9.00	0.0	\$0.00	0.0	\$0.00	
Maple	0.0	\$0.00	0.0	\$0.00	1,519.0	\$21.16	0.0	\$0.00	0.0	\$0.00	
<b>Pine Co.</b>	<b>All Species</b>	<b>0.0</b>	<b>\$0.00</b>	<b>0.0</b>	<b>\$0.00</b>	<b>9,347.0</b>	<b>\$51.01</b>	<b>722.0</b>	<b>\$20.66</b>	<b>0.0</b>	<b>\$0.00</b>

\* Prices reported for wood sold CY2004-CY2006 and cut in CY2007.

<b>St. Louis Co.</b>		<b>Reporting Period: 01/07 to 12/07</b>				<b>Reporting Basis: Appraisal Reports</b>					
<u>Species Name</u>	<u>Sawtimber</u>		<u>Bolts</u>		<u>Pulpwood</u>		<u>Pulp and Bolts</u>		<u>Fuelwood</u>		
	<u>MBF</u>	<u>Avg Price</u>	<u>Cords</u>	<u>Avg Price</u>	<u>Cords</u>	<u>Avg Price</u>	<u>Cords</u>	<u>Avg Price</u>	<u>Cords</u>	<u>Avg Price</u>	
Aspen	0.0	\$0.00	0.0	\$0.00	79,221.0	\$30.50	0.0	\$0.00	0.0	\$0.00	
Balm of Gilead	0.0	\$0.00	0.0	\$0.00	1,823.0	\$29.15	0.0	\$0.00	0.0	\$0.00	
Birch Species	0.0	\$0.00	0.0	\$0.00	23,386.0	\$9.83	0.0	\$0.00	0.0	\$0.00	
Ash Species	0.0	\$0.00	0.0	\$0.00	7,837.0	\$7.28	0.0	\$0.00	0.0	\$0.00	
Basswood	0.0	\$0.00	0.0	\$0.00	649.0	\$11.32	0.0	\$0.00	0.0	\$0.00	
Balsam Fir	0.0	\$0.00	0.0	\$0.00	15,239.0	\$18.32	0.0	\$0.00	0.0	\$0.00	
Spruce Species	0.0	\$0.00	0.0	\$0.00	26,170.0	\$29.70	0.0	\$0.00	0.0	\$0.00	
Tamarack	0.0	\$0.00	0.0	\$0.00	2,753.0	\$5.32	0.0	\$0.00	0.0	\$0.00	
Jack Pine	0.0	\$0.00	0.0	\$0.00	3,972.0	\$28.20	0.0	\$0.00	0.0	\$0.00	
Red & White Pine	0.0	\$0.00	0.0	\$0.00	3,778.0	\$34.97	0.0	\$0.00	0.0	\$0.00	
Maple	0.0	\$0.00	0.0	\$0.00	7,154.0	\$7.30	0.0	\$0.00	0.0	\$0.00	
<b>St. Louis Co.</b>	<b>All Species</b>	<b>0.0</b>	<b>\$0.00</b>	<b>0.0</b>	<b>\$0.00</b>	<b>171,982.0</b>	<b>\$24.02</b>	<b>0.0</b>	<b>\$0.00</b>	<b>0.0</b>	<b>\$0.00</b>

**FEDERAL AGENCIES**

<b>USDI - BIA</b>		<b>Reporting Period: 10/06 to 09/07</b>				<b>Reporting Basis: Scale Receipts</b>					
<u>Species Name</u>	<u>Sawtimber</u>		<u>Bolts</u>		<u>Pulpwood</u>		<u>Pulp and Bolts</u>		<u>Fuelwood</u>		
	<u>MBF</u>	<u>Avg Price</u>	<u>Cords</u>	<u>Avg Price</u>	<u>Cords</u>	<u>Avg Price</u>	<u>Cords</u>	<u>Avg Price</u>	<u>Cords</u>	<u>Avg Price</u>	
Aspen	0.0	\$0.00	0.0	\$0.00	50,536.0	\$26.87	0.0	\$0.00	0.0	\$0.00	
Balm of Gilead	0.0	\$0.00	0.0	\$0.00	305.0	\$11.58	0.0	\$0.00	0.0	\$0.00	
Birch Species	0.0	\$0.00	0.0	\$0.00	4,170.0	\$8.71	0.0	\$0.00	0.0	\$0.00	
Ash Species	2.0	\$67.00	0.0	\$0.00	29.0	\$4.31	0.0	\$0.00	0.0	\$0.00	
Basswood	0.0	\$0.00	0.0	\$0.00	280.0	\$5.05	0.0	\$0.00	0.0	\$0.00	
Other Hardwoods	0.0	\$0.00	0.0	\$0.00	1,167.0	\$1.94	0.0	\$0.00	0.0	\$0.00	
Balsam Fir	3.0	\$88.33	0.0	\$0.00	2,318.0	\$20.32	0.0	\$0.00	0.0	\$0.00	
Spruce Species	0.0	\$0.00	0.0	\$0.00	3,555.0	\$25.63	0.0	\$0.00	0.0	\$0.00	
Tamarack	0.0	\$0.00	0.0	\$0.00	1,172.0	\$16.65	0.0	\$0.00	0.0	\$0.00	
White Cedar	0.0	\$0.00	0.0	\$0.00	1,321.0	\$11.29	0.0	\$0.00	0.0	\$0.00	
Jack Pine	* 93.0	* \$141.03	0.0	\$0.00	3,620.0	\$22.95	0.0	\$0.00	0.0	\$0.00	
Red & White Pine	* 215.0	* \$116.04	0.0	\$0.00	3,595.0	\$25.35	0.0	\$0.00	0.0	\$0.00	
Maple	0.0	\$0.00	0.0	\$0.00	602.0	\$7.81	0.0	\$0.00	0.0	\$0.00	
<b>USDI - BIA</b>	<b>All Species</b>	<b>313.0</b>	<b>\$122.89</b>	<b>0.0</b>	<b>\$0.00</b>	<b>72,670.0</b>	<b>\$24.12</b>	<b>0.0</b>	<b>\$0.00</b>	<b>0.0</b>	<b>\$0.00</b>

\* Reported sold as MBF based on minimum 9 inch d.b.h. and 6 inch top d.i.b.

<b>Chippewa N.F.</b>		<b>Reporting Period: 10/06 to 09/07</b>				<b>Reporting Basis: Appraisal Reports</b>					
<u>Species Name</u>	<u>Sawtimber</u>		<u>Bolts</u>		<u>Pulpwood</u>		<u>Pulp and Bolts</u>		<u>Fuelwood</u>		
	<u>MBF</u>	<u>Avg Price</u>	<u>Cords</u>	<u>Avg Price</u>	<u>Cords</u>	<u>Avg Price</u>	<u>Cords</u>	<u>Avg Price</u>	<u>Cords</u>	<u>Avg Price</u>	
Aspen	0.0	\$0.00	0.0	\$0.00	35,305.9	\$29.06	0.0	\$0.00	0.0	\$0.00	
Birch Species	91.6	\$83.34	0.0	\$0.00	0.0	\$0.00	0.0	\$0.00	0.0	\$0.00	
Other Hardwoods	2,284.1	\$52.22	0.0	\$0.00	7,362.0	\$22.37	0.0	\$0.00	0.0	\$0.00	
Balsam Fir	6.7	\$71.16	0.0	\$0.00	4,944.0	\$29.93	0.0	\$0.00	0.0	\$0.00	
Spruce Species	100.0	\$102.69	0.0	\$0.00	522.0	\$25.23	0.0	\$0.00	0.0	\$0.00	
Tamarack	0.0	\$0.00	0.0	\$0.00	53.0	\$13.52	0.0	\$0.00	0.0	\$0.00	
White Cedar	0.0	\$0.00	0.0	\$0.00	0.0	\$0.00	0.0	\$0.00	0.0	\$0.00	
Jack Pine	* 259.7	* \$105.96	0.0	\$0.00	0.0	\$0.00	0.0	\$0.00	0.0	\$0.00	
Red & White Pine	* 5,111.5	* \$115.58	0.0	\$0.00	** 10,054.0	** \$33.17	0.0	\$0.00	0.0	\$0.00	
<b>Chippewa N.F.</b>	<b>All Species</b>	<b>7,853.6</b>	<b>\$96.26</b>	<b>0.0</b>	<b>\$0.00</b>	<b>58,240.9</b>	<b>\$28.95</b>	<b>0.0</b>	<b>\$0.00</b>	<b>0.0</b>	<b>\$0.00</b>

\* Reported sold as MBF based on minimum 9 inch d.b.h. and 6 inch top d.i.b.

\*\* Reported as mixed pine pulpwood; includes Red, White, and Jack Pine.

**Superior N.F. Reporting Period: 10/06 to 09/07 Reporting Basis: Appraisal Reports**

Species Name	Sawtimber		Bolts		Pulpwood		Pulp and Bolts		Fuelwood	
	MBF	Avg Price	Cords	Avg Price	Cords	Avg Price	Cords	Avg Price	Cords	Avg Price
Aspen	0.0	\$0.00	0.0	\$0.00	42,058.0	\$24.15	0.0	\$0.00	0.0	\$0.00
Birch Species	454.0	\$14.98	0.0	\$0.00	17,225.0	\$8.19	0.0	\$0.00	0.0	\$0.00
Other Hardwoods	0.0	\$0.00	0.0	\$0.00	186.0	\$2.22	0.0	\$0.00	0.0	\$0.00
Balsam Fir	0.0	\$0.00	0.0	\$0.00	8,711.0	\$17.81	0.0	\$0.00	0.0	\$0.00
Spruce Species	0.0	\$0.00	0.0	\$0.00	7,044.0	\$16.87	* 2,202.0	\$26.03	0.0	\$0.00
White Cedar	0.0	\$0.00	0.0	\$0.00	2.0	\$2.00	0.0	\$0.00	0.0	\$0.00
Jack Pine	0.0	\$0.00	0.0	\$0.00	279.0	\$11.13	* 6,122.0	\$25.36	0.0	\$0.00
Red & White Pine	* 3,612.0	\$100.60	0.0	\$0.00	10,164.0	\$20.73	0.0	\$0.00	0.0	\$0.00
Maple	0.0	\$0.00	0.0	\$0.00	1,227.0	\$9.34	0.0	\$0.00	0.0	\$0.00

**Superior N.F. All Species 4,066.0 \$91.04 0.0 \$0.00 86,896.0 \$19.07 8,324.0 \$25.54 0.0 \$0.00**

\*Reported sold as MBF based on minimum diameter = 9 inch d.b.h. and 6 inch top d.i.b.

**MINNESOTA DEPARTMENT OF NATURAL RESOURCES, DIVISION OF FORESTRY**

**DNR Forestry Reporting Period: 01/07 to 12/07 Reporting Basis: Appraisal Reports<sup>a</sup>**

Species Name	Sawtimber		Bolts		Pulpwood		Pulp and Bolts		Fuelwood	
	MBF	Avg Price	Cords	Avg Price	Cords	Avg Price	Cords	Avg Price	Cords	Avg Price
Aspen	44.3	\$41.33	0.0	\$0.00	165,489.0	\$24.99	469,366.0	\$28.35	17.0	\$1.41
Balm of Gilead	0.0	\$0.00	0.0	\$0.00	2,071.0	\$10.73	3,519.0	\$13.24	0.0	\$0.00
Birch Species	80.0	\$32.50	0.0	\$0.00	15,814.5	\$7.12	44,675.6	\$8.55	1,858.0	\$7.58
Ash Species	185.2	\$37.40	0.0	\$0.00	2,333.6	\$2.08	7,362.0	\$4.42	565.0	\$1.99
Elm Species	53.0	\$85.22	0.0	\$0.00	0.0	\$0.00	0.0	\$0.00	0.0	\$0.00
Oak Species	* 1,419.5	\$182.83	0.0	\$0.00	2,283.9	\$9.03	9,481.1	\$21.86	1,340.0	\$8.20
Basswood	642.3	\$98.27	0.0	\$0.00	1,957.0	\$4.16	7,924.0	\$8.24	0.0	\$0.00
Other Hardwoods	62.2	\$78.01	0.0	\$0.00	6,066.7	\$4.35	22,520.0	\$11.87	763.0	\$4.37
Balsam Fir	0.0	\$0.00	0.0	\$0.00	39,331.7	\$15.90	12,251.0	\$19.57	0.0	\$0.00
Spruce Species	0.0	\$0.00	0.0	\$0.00	41,133.3	\$17.86	67,399.5	\$19.57	0.0	\$0.00
Tamarack	0.0	\$0.00	0.0	\$0.00	21,823.2	\$4.45	48,165.0	\$2.98	3,146.0	\$2.36
White Cedar	3.3	\$16.20	0.0	\$0.00	120.0	\$3.44	691.0	\$3.55	0.0	\$0.00
Jack Pine	0.0	\$0.00	0.0	\$0.00	1,658.0	\$17.98	70,716.0	\$30.52	1,475.4	\$1.72
Red & White Pine	2,932.6	\$122.16	0.0	\$0.00	653.2	\$12.12	31,927.0	\$28.98	0.0	\$0.00
Maple	* 100.1	\$137.34	0.0	\$0.00	16,538.2	\$5.20	13,669.0	\$5.54	120.0	\$2.33

**DNR Forestry All Species 5,522.5 \$129.55 0.0 \$0.00 317,273.3 \$18.63 809,666.2 \$23.68 9,284.4 \$4.29**

\*Does not include veneer logs. Additional volumes/prices: Red Oak Veneer = 1,090 MBF @ \$370/MBF and Sugar Maple Veneer = 34 MBF @ \$380/MBF.

<sup>a</sup>Sold volume includes 366,500 cords of resold stumpage permits that were forfeited during CY2006.



STATE OF  
**MINNESOTA**  
**DEPARTMENT OF NATURAL RESOURCES**  
500 LAFAYETTE ROAD • ST. PAUL, MINNESOTA • 55155-4001

AN EQUAL OPPORTUNITY EMPLOYER

NA-00057-02



State of Minnesota  
Department of Natural Resources  
Division of Forestry

**PUBLIC STUMPAGE**



**PRICE REVIEW**

## 2007 EDITION

The Minnesota Public Stumpage Price Review is compiled by the Division of Forestry in cooperation with other public land management agencies in Minnesota. The continued cooperation received from the reporting agencies is greatly appreciated.