

2018 Minnesota Public Agencies Stumpage Price Review and Price Indices

May 20, 2019

Download at URL: <http://www.dnr.state.mn.us/forestry/timbersales/stumpage.html>

Highlights

- In 2018, all species and products stumpage sold by public agencies in Minnesota totaled 1.715 million cord equivalents with a value of \$45.623 million as compared to 1.692 million cord equivalents sold with a value of \$50.033 million in 2017. This amounts to a year-over-year volume increase of 23,044 cord equivalents or 1.4 percent and a year-over-year value decrease of \$4.410 million or 8.8 percent (Figure 1). In 2018, the average all species and products sell price was \$26.60 per cord equivalent compared to \$29.58 in 2017, a price decrease of \$2.97 per cord equivalent or 10.0 percent.

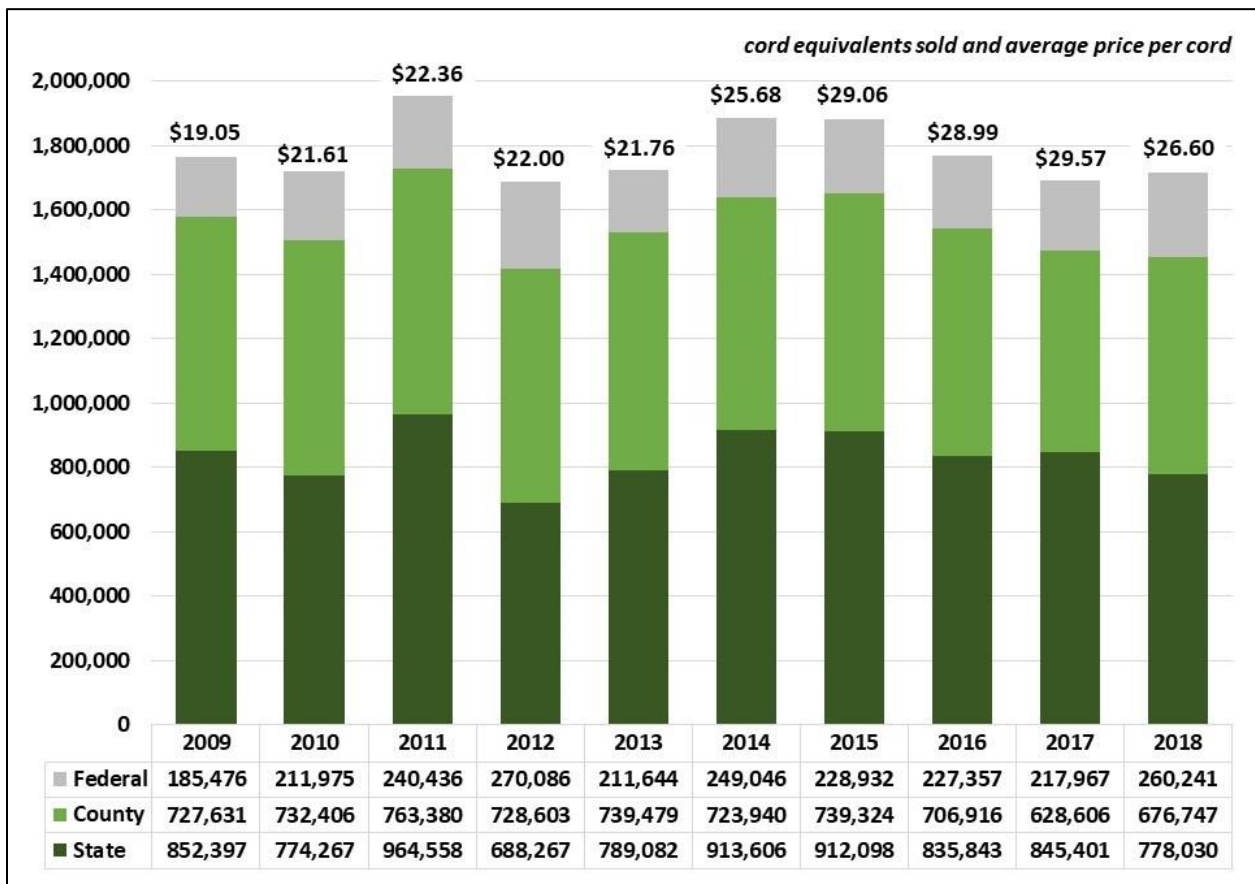


Figure 1: Volume sold by ownership category and average sell price per cord, 2009-2018. (a)

a) Product categories: sawtimber, pulp & bolts, pulpwood, fuelwood, and biomass.

- In 2018, the average stumpage price received by public agencies for all-species hardwood cord products decreased to \$27.27 per cord from \$29.99 per cord in 2017, a price decrease of \$2.72 per cord or 9.1 percent. In 2018, the average public agencies aspen stumpage price received was \$32.20 per cord compared to \$35.36 per cord in 2017, a price decrease of \$3.16 per cord or 8.9 percent (Figure 2, Table 2, page 6).

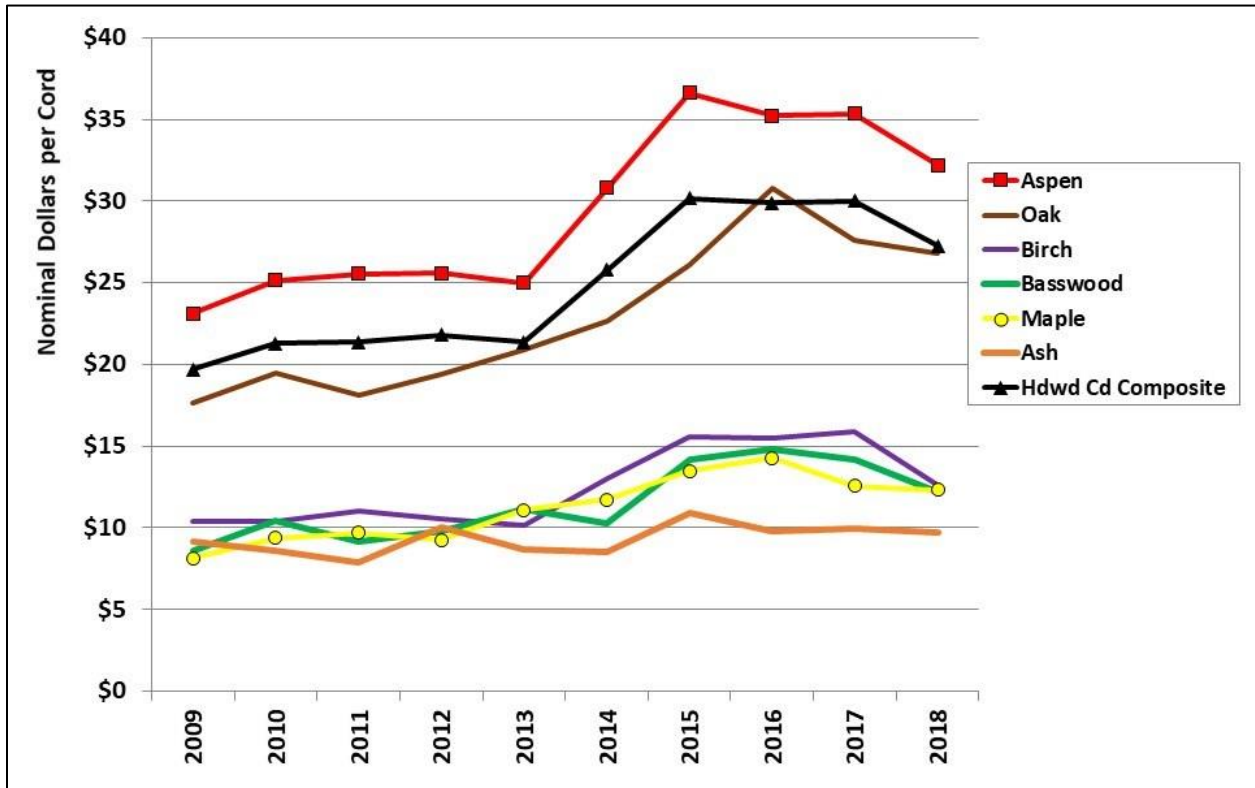


Figure 2: Hardwood cord product prices by species group, 2009-2018. (a)
a) Product categories: pulp & bolts and pulpwood only.

- In 2018, the average stumpage price received by public agencies for all-species softwood cord products decreased to \$23.07 per cord from \$26.45 per cord in 2017, a price decrease of \$2.12 per cord or 8.7 percent. In 2018, the average public agencies red pine cord products stumpage price was \$35.95 per cord compared to \$39.03 per cord in 2017, a year-over-year price decrease of \$3.08 per cord or 7.9 percent. In 2018, the average public agencies black spruce cord products stumpage price was \$24.29 per cord compared to \$25.05 per cord in 2017, a year-over-year price decrease of \$0.76 per cord or 3.0 percent (Figure 3, Table 2, page 6).

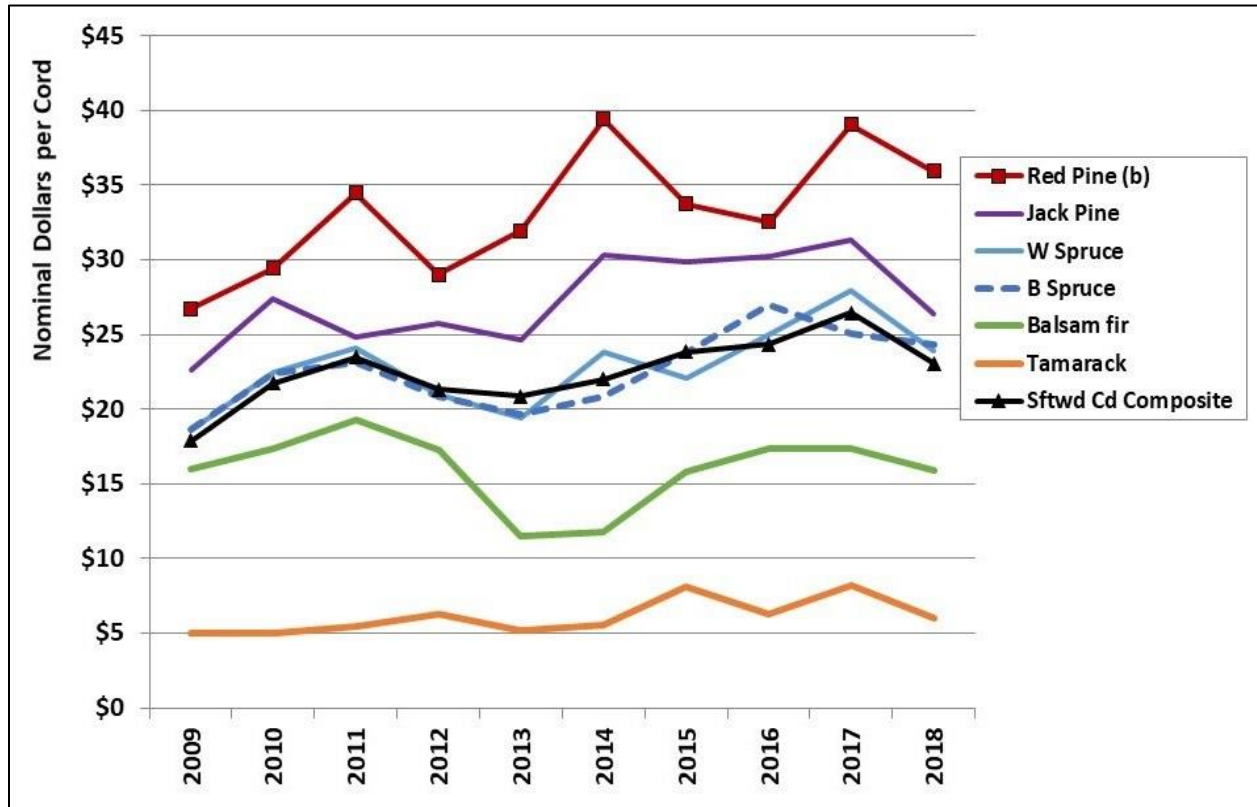


Figure 3: Softwood cord product prices by species group, 2009-2018. (a) a) Product categories: pulp & bolts and pulpwood only. b) Includes white pine through 2010.

- In 2018, the average stumpage price received by public agencies for all-species sawtimber increased to \$134.00 per Mbf compared to \$128.87 per Mbf in 2017, a year-over-year price increase of \$5.13 per Mbf or 4.0 percent. In 2018, the average price of red pine sawtimber increased to \$144.41 per Mbf compared to \$142.72 per Mbf in 2017, a price increase of \$1.69 per Mbf or 1.2 percent. In 2018, the average price of oak sawtimber decreased to \$194.63 compared to \$195.16 in 2017, a price decrease of \$0.53 per Mbf or 0.3 percent (Figure 4, Table 3, page 7).

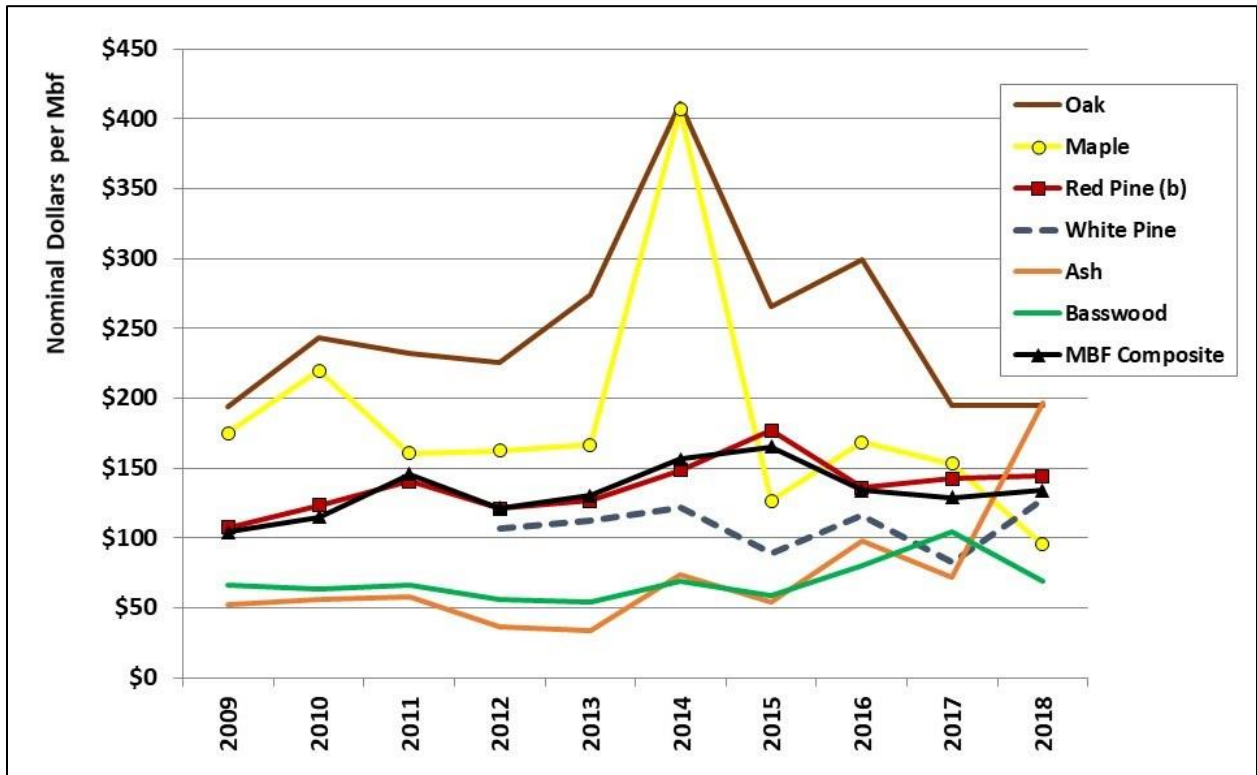


Figure 4: Sawtimber stumpage prices by species group, 2009-2018. (a)

a) Sawtimber units of measure include both Scribner log rule and cords converted to thousand board feet (Mbf) at two cords per Mbf.

b) Includes white pine through 2011.

Inflation Adjusted Stumpage Price Indices

The Implicit Price Deflator for Gross Domestic Product (GDP) is baseline inflation (all indices base year 2000=100). In 2018, the Inflation Index increased to 141.2, a 2.2 percent increase year-over-year. In 2018, the all-agencies Aspen Cord Price Index decreased 8.9 percent year-over-year to 116.6. The Black Spruce Cord Price Index decreased 3.0 percent year-over-year to 105.4. The Red Pine Mbf Price Index increased 1.2 percent year-over-year to 82.0. The Mbf Composite Price Index increased 4.0 percent year-over-year to 125.2 (Figure 5, Table 1).

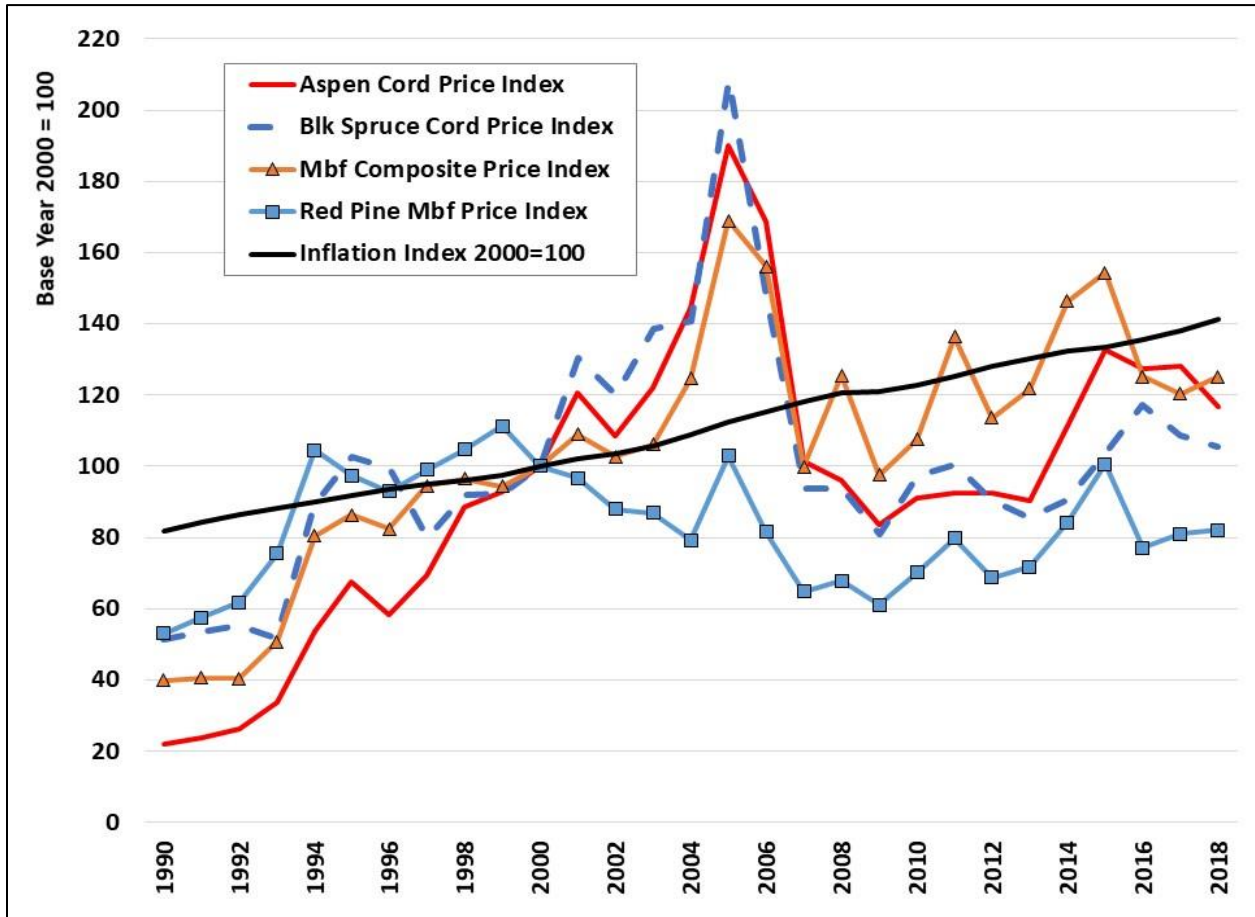


Figure 5: Inflation adjusted public agencies stumpage price indices, 1990-2018.

Table 1: Public stumpage price indices and inflation, base year 2000 = 100.

Price Index	2014	2015	2016	2017	2018	Y/Y Δ	Y/Y Δ%
Aspen Cord Price Index	111.5	132.7	127.6	128.0	116.6	(11.4)	-8.9%
Black Spruce Cord Price Index	90.5	103.3	117.3	108.7	105.4	(3.3)	-3.0%
Red Pine Mbf Price Index	84.3	100.7	77.2	81.1	82.0	1.0	1.2%
Mbf Composite Price Index	146.3	154.3	125.2	120.4	125.2	4.8	4.0%
Inflation Index	132.4	133.6	135.6	138.2	141.2	3.0	2.2%

Historical Prices

Table 2: Statewide average prices received for stumpage sold by public agencies in Minnesota, 10-year history.

Cord Products (Nominal \$/Cord) (a)	2009	2010	2011	2012	2013	2014	2015	2016	2017	2018	18/17 Δ\$YoY	18/17 Δ%YoY
Ash	\$9.16	\$8.60	\$7.92	\$10.02	\$8.66	\$8.51	\$10.88	\$9.81	\$9.98	\$9.68	(\$0.30)	-3.0%
Aspen	\$23.11	\$25.16	\$25.55	\$25.59	\$24.99	\$30.80	\$36.64	\$35.23	\$35.36	\$32.20	(\$3.16)	-8.9%
Balm	\$20.83	\$21.22	\$20.01	\$22.77	\$20.56	\$24.80	\$27.68	\$27.46	\$30.56	\$25.55	(\$5.01)	-16.4%
Birch	\$10.37	\$10.37	\$11.06	\$10.54	\$10.18	\$13.00	\$15.60	\$15.53	\$15.92	\$12.66	(\$3.26)	-20.5%
Oak	\$17.61	\$19.51	\$18.14	\$19.38	\$20.89	\$22.68	\$26.06	\$30.76	\$27.62	\$26.82	(\$0.80)	-2.9%
Basswood	\$8.58	\$10.45	\$9.15	\$9.79	\$11.13	\$10.30	\$14.19	\$14.78	\$14.18	\$12.19	(\$1.99)	-14.0%
Maple	\$8.14	\$9.36	\$9.71	\$9.27	\$11.10	\$11.72	\$13.50	\$14.26	\$12.57	\$12.34	(\$0.23)	-1.8%
Mixed/Other Hdws	\$11.78	\$12.29	\$11.84	\$12.23	\$10.71	\$13.90	\$14.08	\$16.58	\$16.34	\$12.40	(\$3.94)	-24.1%
Balsam fir	\$16.04	\$17.38	\$19.25	\$17.25	\$11.54	\$11.83	\$15.84	\$17.33	\$17.39	\$15.94	(\$1.45)	-8.3%
W Spruce	\$18.64	\$22.43	\$24.08	\$21.01	\$19.41	\$23.78	\$22.12	\$24.99	\$27.97	\$23.90	(\$4.07)	-14.6%
B Spruce	\$18.64	\$22.43	\$23.14	\$20.87	\$19.68	\$20.84	\$23.79	\$27.02	\$25.05	\$24.29	(\$0.76)	-3.0%
Tamarack	\$5.01	\$5.03	\$5.51	\$6.30	\$5.17	\$5.54	\$8.09	\$6.26	\$8.17	\$5.98	(\$2.19)	-26.8%
Cedar	\$5.69	\$6.19	\$8.21	\$5.12	\$7.86	\$6.34	\$6.41	\$6.85	\$6.56	\$7.87	\$1.31	20.0%
Jack Pine	\$22.59	\$27.42	\$24.85	\$25.75	\$24.67	\$30.31	\$29.85	\$30.24	\$31.36	\$26.43	(\$4.93)	-15.7%
Red Pine (b)	\$26.71	\$29.42	\$34.45	\$29.02	\$31.93	\$39.42	\$33.71	\$32.52	\$39.03	\$35.95	(\$3.08)	-7.9%
White Pine			\$31.42	\$21.74	\$30.06	\$23.23	\$38.66	\$27.02	\$16.64	\$17.44	\$0.80	4.8%
Hdwd Cd Composite	\$19.70	\$21.28	\$21.36	\$21.81	\$21.37	\$25.77	\$30.17	\$29.91	\$29.99	\$27.27	(\$2.72)	-9.1%
Sftwd Cd Composite	\$17.88	\$21.73	\$23.48	\$21.31	\$20.89	\$22.03	\$23.84	\$24.33	\$26.45	\$23.07	(\$3.38)	-12.8%

a) Combined Pulpwood and Pulp & Bolts cord products.

b) Includes White pine through 2010.

Table 3: Statewide average prices received for stumpage sold by public agencies in Minnesota, 10-year history.

Sawtimber Products (Nominal \$/Mbf) (a)	2009	2010	2011	2012	2013	2014	2015	2016	2017	2018	18/17 Δ\$YoY	18/17 Δ%YoY
Ash	\$51.89	\$56.27	\$58.09	\$36.12	\$34.06	\$73.41	\$54.17	\$97.67	\$72.20	\$196.37	\$124.17	172.0%
Aspen												
Birch	\$19.82	\$38.92	\$42.15	\$35.70	\$36.97	\$47.04	\$42.84	\$45.24	\$43.00	\$61.23	\$18.23	42.4%
Elm	\$53.99	\$45.08	\$60.43	\$42.45	\$41.41	\$42.19	\$42.50	\$42.54	\$39.77	\$54.75	\$14.98	37.7%
Oak	\$193.61	\$243.09	\$232.20	\$225.36	\$274.54	\$411.34	\$265.54	\$299.03	\$195.16	\$194.63	(\$0.53)	-0.3%
Basswood	\$66.24	\$63.47	\$66.11	\$55.87	\$54.44	\$68.87	\$59.24	\$80.40	\$104.38	\$69.55	(\$34.83)	-33.4%
Maple	\$175.00	\$219.83	\$160.78	\$162.50	\$166.65	\$406.70	\$126.70	\$168.50	\$153.04	\$95.21	(\$57.83)	-37.8%
Mixed/Other Hdws	\$37.72	\$29.80	\$48.31	\$36.88	\$28.56	\$65.40	\$47.87	\$47.04	\$50.28	\$47.30	(\$2.98)	-5.9%
Balsam fir	\$58.34				\$66.51							
W Spruce	\$87.05	\$102.15	\$64.23	\$83.12	\$87.57	\$61.12	\$74.68	\$73.59	\$67.58	\$76.14	\$8.56	12.7%
Cedar												
Jack Pine	\$106.19	\$105.00	\$145.76	\$138.95	\$112.00	\$89.56	\$105.00	\$118.77	\$139.76	\$109.56	(\$30.20)	-21.6%
Red Pine (b)	\$107.40	\$123.36	\$140.46	\$121.15	\$126.48	\$148.33	\$177.16	\$135.87	\$142.72	\$144.41	\$1.69	1.2%
White Pine				\$106.66	\$112.79	\$121.29	\$88.92	\$116.02	\$82.28	\$127.44	\$45.16	54.9%
MBF Composite	\$104.49	\$115.16	\$145.88	\$121.59	\$130.39	\$156.53	\$165.13	\$133.99	\$128.87	\$134.00	\$5.13	4.0%

a) Scribner log scale and cords converted to thousand board feet (Mbf) at 2 cords per Mbf.

b) Includes white pine through 2011.

Historical Sales Values

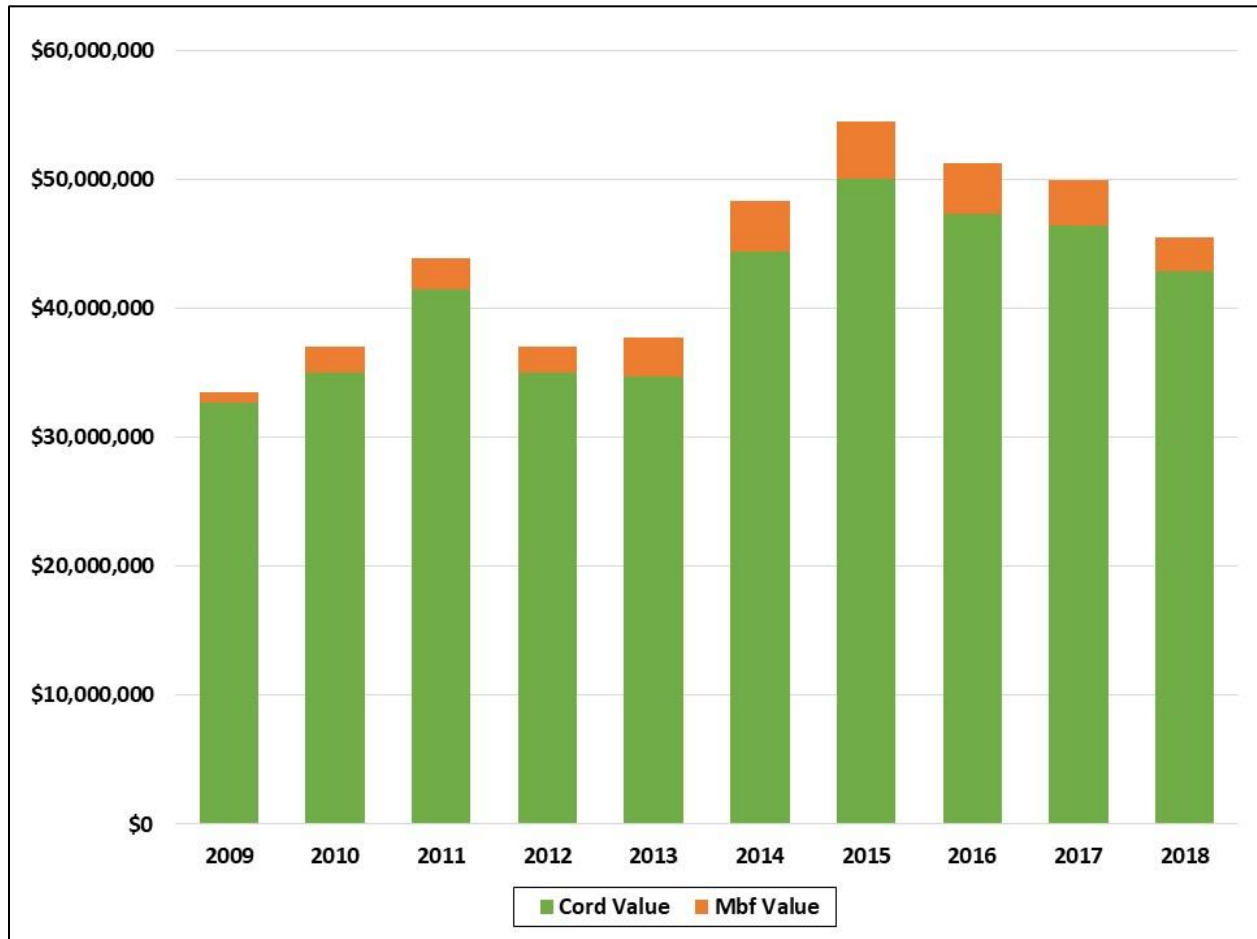


Figure 6: Minnesota public agencies value of cord and sawtimber products sold, 2009-2018. (a) a) Product categories: sawtimber, pulp & bolts, and pulpwood.

Table 4: Minnesota public agencies stumpage value sold, 2009-2018.

Year	Cord Value	Mbf Value	Total Value	Δ\$ YoY	Δ% YoY
2009	\$32,672,750	\$868,862	\$33,541,612	---	---
2010	\$34,986,480	\$2,017,522	\$37,004,002	\$3,462,391	10.3%
2011	\$41,490,200	\$2,394,396	\$43,884,596	\$6,880,593	18.6%
2012	\$35,047,126	\$1,952,204	\$36,999,330	(\$6,885,266)	-15.7%
2013	\$34,731,261	\$3,002,852	\$37,734,113	\$734,783	2.0%
2014	\$44,457,180	\$3,887,081	\$48,344,261	\$10,610,148	28.1%
2015	\$50,112,024	\$4,369,446	\$54,481,471	\$6,137,210	12.7%
2016	\$47,327,421	\$3,898,130	\$51,225,551	(\$3,255,920)	-6.0%
2017	\$46,464,399	\$3,479,238	\$49,943,637	(\$1,281,915)	-2.5%
2018	\$42,903,113	\$2,624,607	\$45,527,720	(\$4,415,916)	-8.8%

Historical Sales Volumes

In 2018, Minnesota public agencies sold 1,682,741 cord equivalents of sawtimber, pulp & bolts, and pulpwood compared to sales of 1,657,831 cord equivalents in 2017, a sales volume increase of 24,910 cord equivalents or 1.5 percent year-over-year (Figure 7, Table 5). In 2018, aspen/balm of Gilead sold volume increased to 869,353 cords from 830,713 cords in 2017, a 38,640-cord or 4.7 percent increase year-over-year. In 2018, pine volume sold decreased to 178,919 cord equivalents from 217,267 cord equivalents in 2017, a 38,348-cord or 17.7 percent decrease. In 2018, spruce volume sold decreased to 156,359 cords from 158,623 cords in 2017, a 2,264-cord or 1.4 percent decrease.

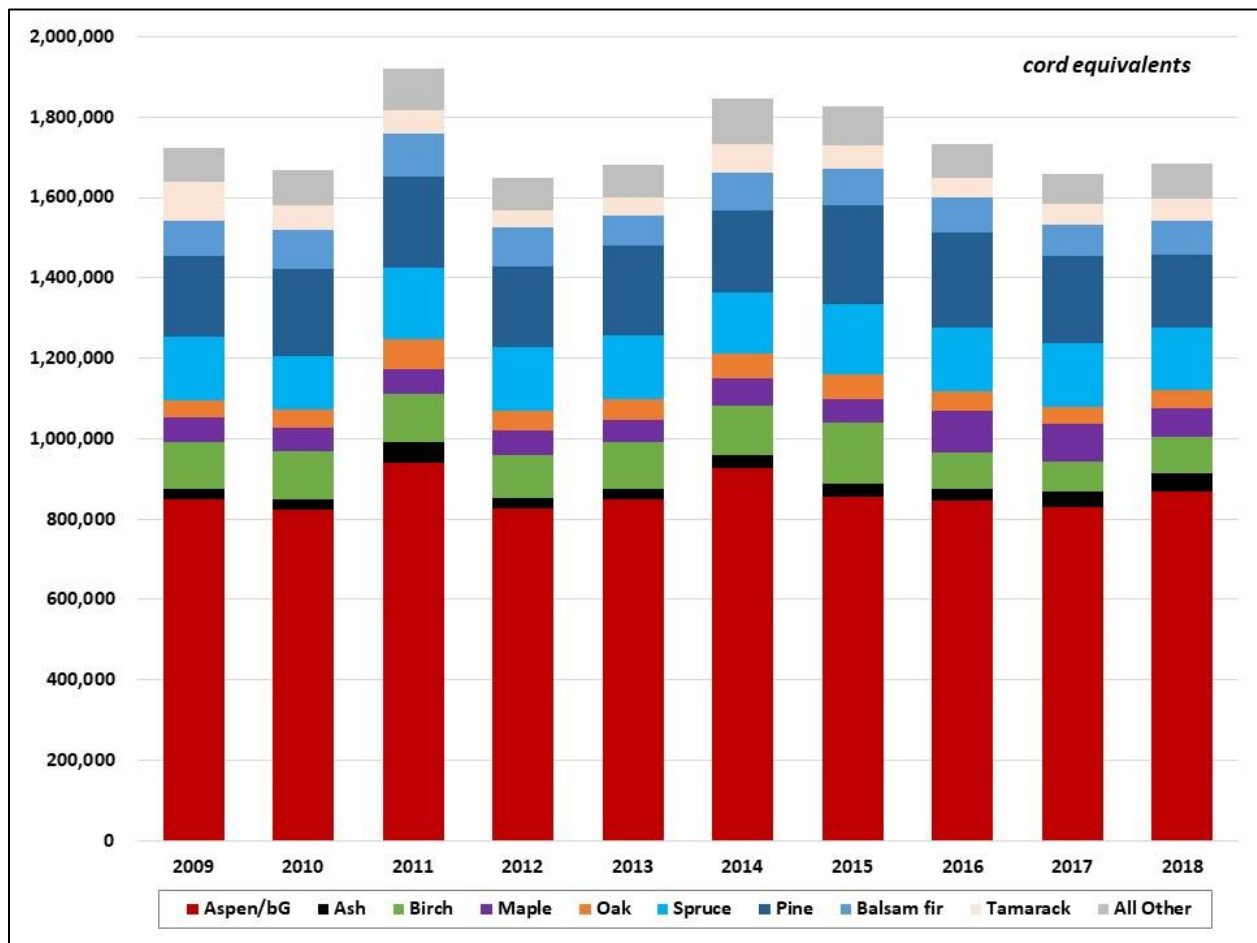


Figure 7: All public agencies volume sold by species group, 2009-2018. (a)
 a) Product categories: sawtimber, pulp & bolts, and pulpwood.

Table 5: Minnesota public agencies volume sold by species group in cord equivalents, 2009-2018. (a)

Year	Aspen/bG	Ash	Birch	Maple	Oak	Spruce	Pine	Balsam fir	Tamarack	All Other	Total Sold
2009	848,016	26,943	115,236	62,320	43,887	156,408	202,221	85,918	97,270	86,399	1,724,617
2010	824,135	24,988	119,494	59,575	44,530	130,870	216,865	98,517	60,380	89,861	1,669,214
2011	940,669	50,223	119,533	63,752	74,256	176,260	227,487	106,658	58,118	104,144	1,921,100
2012	826,340	24,979	107,629	60,741	48,525	160,322	199,581	97,256	43,303	81,381	1,650,055
2013	849,626	25,730	114,661	55,874	51,912	160,644	220,209	75,940	45,471	81,498	1,681,563
2014	927,010	32,801	122,493	67,117	62,050	152,298	202,962	95,889	71,717	110,434	1,844,771
2015	855,460	32,223	153,171	59,020	59,129	174,975	247,082	88,934	59,133	95,955	1,825,081
2016	845,524	30,523	89,247	105,016	47,710	159,245	234,485	89,715	47,926	83,316	1,732,707
2017	830,713	38,434	75,171	90,992	44,143	158,623	217,267	77,439	50,127	74,922	1,657,831
2018	869,353	45,762	88,672	72,080	44,965	156,359	178,919	84,440	56,198	85,993	1,682,741
18/17 Δ	38,640	7,328	13,501	(18,912)	822	(2,264)	(38,348)	7,000	6,072	11,071	24,910
18/17 Δ%	4.7%	19.1%	18.0%	-20.8%	1.9%	-1.4%	-17.7%	9.0%	12.1%	14.8%	1.5%

a) Product categories: sawtimber, pulp & bolts, and pulpwood only.

Data and Methods

This report presents average stumpage prices received by all Minnesota public agencies for the following product classifications: sawtimber, pulp & bolts, pulpwood, fuelwood, and biomass. All data are self-reported by individual agency representatives facilitated by a DNR-led survey. Price and volume data and summary analyses presented in this report may be useful for determining the total volume and value of stumpage sold and for comparing relative volumes and values of stumpage sold over time.

DISCLAIMER—Public agencies follow different fiscal years and there is some variability in sawtimber, bolt, and pulpwood specifications.

The reporting period for each agency is included as part of the agencies information. The fiscal year used by the counties is the same as the calendar year. The state's (Minnesota DNR Forestry) fiscal year runs from July 1 to June 30, but, to make the data reported more consistent with the other agencies, the timeframe for state data included in the report is for **CY2018**. Federal agencies (USFS and BIA) fiscal year runs from October 1 – September 30.

Federal agencies softwood sawtimber specifications include bolts to a six-inch top dib and hardwood bolts to an eight-inch top dib. Virtually all other agencies report pulp and bolts as a standalone product category for species that are frequently purchased by sawmills. Self-reported product category volumes and values are “normalized”, at the discretion of the state forest economist, to account for variability in product specifications. In addition, some agencies report their data based on timber appraisal estimates from timber sales sold, while others report based on actual scale receipts from timber harvested and scaled. The reporting basis for each agency is noted in the report.

The reader should use caution when comparing the prices shown in this report with actual prices received or expected on a specific timber sale. Individual sale prices may vary significantly (± 30 percent or more) from the averages shown in this report due to variability in local markets, road access costs, haul distance, sale/site specific conditions, and operational constraints.

Definitions

Average price—mathematical average, equals total value divided by total volume for each listed species group and product classification.

Biomass—dead trees and logging residues including tops, limbs, and cull reported in green tons.

Board foot—a piece of wood 1” thick by 12” long by 12” wide.

Bolt—short length log, in the Lake States usually 100” in length with minimum 6” top dib. Depending on species and quality, may be suitable for the production of dimensional lumber (2x4s), industrial grade lumber (pallets), for manufacturing turned forest products, or for peeling.

Inflation Index—base year 2000=100, indexed to general price changes as measured by the Implicit Price Deflator for Gross Domestic Product (GDP) compiled by the U.S. Department of Commerce, Bureau of Economic Analysis.

Cord (Standard)—cubic volume measure 4-feet wide by 4-feet high by 8-feet in length, or equivalent containing 128 cubic feet of well stacked roundwood, including bark and air space, with an average of 79 cubic feet of solid wood. By state statute, fuelwood is measured in standard cords.

Cord (100-inch)—cubic volume measure 4-feet wide by 4-feet high by 8.3-feet (100-inch) in length, or equivalent containing 133.3 cubic feet of well stacked roundwood, including bark and air space, with an average of 82.3 cubic feet solid wood. In Minnesota, the vast majority of cord products are cut to 100-inch.

Mbf—one thousand board feet; stumpage volume measured using Scribner Decimal C log or tree scale.

Mbf Composite Price Index—base year 2000=100, volume weighted (total all-species MBF value divided by total all-species MBF volume) sawtimber price index.

MMbf—one million board feet; stumpage volume measured using Scribner log or tree scale.

Pulpwood—stem suitable for fiber used for paper and oriented strand board (OSB) manufacturing.

Pulp & Bolts—stem containing the mixed products of pulpwood and bolts.

Sawtimber—stem suitable for production of graded boards and/or dimension lumber.

Stumpage—value paid to a landowner to harvest standing timber.

Contact

Don Deckard, Ph.D., State Forest Economist
MNDNR Division of Forestry
500 Lafayette Road North
Saint Paul, Minnesota 55155-4044
Mailto: donald.deckard@state.mn.us
Desk: (651) 259-5287

2018 SUMMARY

ALL MINNESOTA PUBLIC AGENCIES

Agency Name: All

Reporting Period: Multiple

Reporting Basis: Multiple

Species Name	Sawtimber		Pulp and Bolts		Pulpwood		Fuelwood		Biomass	
	MBF	Avg Price	Cords	Avg Price	Cords	Avg Price	Cords	Avg Price	Tons	Avg Price
Aspen	0.0	\$0.00	3,623.0	\$56.73	857,428.1	\$32.09	10.0	\$2.50	0.0	\$0.00
Balm of Gilead	0.0	\$0.00	0.0	\$0.00	8,302.2	\$25.55	0.0	\$0.00	0.0	\$0.00
Birch Species	7.3	\$61.23	29,083.0	\$16.76	59,574.8	\$10.65	260.0	\$0.94	0.0	\$0.00
Ash Species	193.8	\$196.37	23,176.4	\$12.06	22,197.6	\$7.19	84.9	\$3.14	0.0	\$0.00
Elm Species	6.1	\$54.75	0.0	\$0.00	82.0	\$8.39	0.0	\$0.00	0.0	\$0.00
Oak Species	1,190.4	\$194.63	33,201.0	\$28.57	9,383.6	\$20.61	534.0	\$7.71	0.0	\$0.00
Basswood	408.2	\$69.55	19,680.0	\$13.59	6,373.6	\$7.87	0.0	\$0.00	0.0	\$0.00
Mixed/Other Hdwds	2,258.8	\$47.30	25,001.1	\$16.57	18,598.3	\$6.80	3,212.8	\$6.78	0.0	\$0.00
Balsam fir	0.0	\$0.00	11,716.4	\$24.03	72,723.2	\$14.64	5.0	\$2.60	0.0	\$0.00
White Spruce	110.7	\$76.14	37,663.4	\$26.99	38,911.9	\$20.90	0.0	\$0.00	0.0	\$0.00
Black Spruce	0.0	\$0.00	23,362.0	\$27.10	56,199.9	\$23.11	0.0	\$0.00	0.0	\$0.00
Tamarack	10.2	\$34.61	6,864.3	\$9.82	49,313.5	\$5.45	8,015.7	\$2.39	0.0	\$0.00
White Cedar	0.0	\$0.00	4,000.8	\$8.77	1,514.9	\$5.47	0.0	\$0.00	0.0	\$0.00
Jack Pine	80.0	\$109.56	30,324.3	\$28.63	5,833.1	\$15.02	144.2	\$2.27	0.0	\$0.00
Red Pine	14,990.1	\$144.41	94,097.6	\$40.30	16,306.7	\$10.87	1,528.2	\$1.95	0.0	\$0.00
White Pine	158.1	\$127.44	997.0	\$26.62	904.1	\$7.31	113.0	\$2.41	0.0	\$0.00
Maple Species	172.4	\$95.21	15,710.9	\$16.21	56,024.3	\$11.26	60.0	\$2.50	0.0	\$0.00
Mixed Species	0.0	\$0.00	349.0	\$20.92	5,047.2	\$13.44	1,579.2	\$4.82	40,883.5	\$0.94
All Agencies All Spp.	19,586.1	\$134.00	358,850.2	\$26.71	1,284,719.0	\$25.93	15,547.0	\$3.66	40,883.5	\$0.94

AVERAGE SALE PRICES REPORTED BY AGENCY

MINNESOTA COUNTIES 2018

Aitkin County

Agency Name: Aitkin Co.

Reporting Period: 01/18 to 12/18

Reporting Basis: Appraisal Reports

Species Name	Sawtimber		Pulp and Bolts		Pulpwood		Fuelwood		Biomass	
	MBF	Avg Price	Cords	Avg Price	Cords	Avg Price	Cords	Avg Price	Tons	Avg Price
Aspen	0.0	\$0.00	0.0	\$0.00	17,803.0	\$27.98	0.0	\$0.00	0.0	\$0.00
Balm of Gilead	0.0	\$0.00	0.0	\$0.00	0.0	\$0.00	0.0	\$0.00	0.0	\$0.00
Birch Species	0.0	\$0.00	1,085.0	\$12.78	559.0	\$10.09	200.0	\$0.50	0.0	\$0.00
Ash Species	0.0	\$0.00	1,087.0	\$10.35	68.0	\$8.12	0.0	\$0.00	0.0	\$0.00
Elm Species	0.0	\$0.00	0.0	\$0.00	0.0	\$0.00	0.0	\$0.00	0.0	\$0.00
Oak Species	121.5	\$95.37	0.0	\$0.00	1,081.0	\$18.16	459.0	\$8.00	0.0	\$0.00
Basswood	8.0	\$50.00	699.0	\$14.80	0.0	\$0.00	0.0	\$0.00	0.0	\$0.00
Mixed/Other Hdws	7.3	\$45.07	3,474.0	\$13.30	1,615.0	\$12.01	228.0	\$5.58	0.0	\$0.00
Balsam fir	0.0	\$0.00	835.0	\$22.73		\$0.00	0.0	\$0.00	0.0	\$0.00
White Spruce	0.0	\$0.00	530.0	\$24.29	10.0	\$16.00	0.0	\$0.00	0.0	\$0.00
Black Spruce	0.0	\$0.00	0.0	\$0.00	888.0	\$15.47	0.0	\$0.00	0.0	\$0.00
Tamarack	0.0	\$0.00	205.0	\$9.39	250.0	\$6.87	0.0	\$0.00	0.0	\$0.00
White Cedar	0.0	\$0.00	0.0	\$0.00	0.0	\$0.00	0.0	\$0.00	0.0	\$0.00
Jack Pine	0.0	\$0.00	25.0	\$38.88	0.0	\$0.00	0.0	\$0.00	0.0	\$0.00
Red Pine	252.5	\$140.20	2,390.0	\$29.28	5.0	\$7.50	0.0	\$0.00	0.0	\$0.00
White Pine	0.0	\$0.00	0.0	\$0.00	0.0	\$0.00	0.0	\$0.00	0.0	\$0.00
Maple Species	0.0	\$0.00	2,065.0	\$12.62	1,377.0	\$10.24	0.0	\$0.00	0.0	\$0.00
Mixed Species	0.0	\$0.00	0.0	\$0.00	0.0	\$0.00	0.0	\$0.00	0.0	\$0.00
Aitkin Co. All Species	389.3	\$122.57	12,395.0	\$17.14	23,656.0	\$24.23	887.0	\$5.69	0.0	\$0.00

Beltrami County

Agency Name: Beltrami Co.

Reporting Period: 01/18 to 12/18

Reporting Basis: Appraisal Reports

Species Name	Sawtimber		Pulp and Bolts		Pulpwood		Fuelwood		Biomass	
	MBF	Avg Price	Cords	Avg Price	Cords	Avg Price	Cords	Avg Price	Tons	Avg Price
Aspen	0.0	\$0.00	0.0	\$0.00	16,948.0	\$36.26	0.0	\$0.00	0.0	\$0.00
Balm of Gilead	0.0	\$0.00	0.0	\$0.00	348.0	\$39.63	0.0	\$0.00	0.0	\$0.00
Birch Species	0.0	\$0.00	264.0	\$11.86	381.5	\$9.81	0.0	\$0.00	0.0	\$0.00
Ash Species	0.0	\$0.00	0.0	\$0.00	634.0	\$10.15	0.0	\$0.00	0.0	\$0.00
Elm Species	0.0	\$0.00	0.0	\$0.00	0.0	\$0.00	0.0	\$0.00	0.0	\$0.00
Oak Species	0.0	\$0.00	0.0	\$0.00	261.0	\$15.64	0.0	\$0.00	0.0	\$0.00
Basswood	0.0	\$0.00	270.0	\$10.70	566.0	\$6.91	0.0	\$0.00	0.0	\$0.00
Mixed/Other Hdwds	0.0	\$0.00	0.0	\$0.00	1,432.0	\$8.43	620.0	\$2.50	0.0	\$0.00
Balsam fir	0.0	\$0.00	248.0	\$14.69	691.0	\$10.72	0.0	\$0.00	0.0	\$0.00
White Spruce	0.0	\$0.00	177.0	\$13.79	33.5	\$11.85	0.0	\$0.00	0.0	\$0.00
Black Spruce	0.0	\$0.00	0.0	\$0.00	74.0	\$9.46	0.0	\$0.00	0.0	\$0.00
Tamarack	0.0	\$0.00	0.0	\$0.00	2,140.0	\$3.93	0.0	\$0.00	0.0	\$0.00
White Cedar	0.0	\$0.00	0.0	\$0.00	47.0	\$5.64	0.0	\$0.00	0.0	\$0.00
Jack Pine	0.0	\$0.00	2,397.2	\$31.12	0.0	\$0.00	0.0	\$0.00	0.0	\$0.00
Red Pine	0.0	\$0.00	5,411.0	\$38.95	2,085.0	\$11.35	0.0	\$0.00	0.0	\$0.00
White Pine	0.0	\$0.00	121.0	\$31.36	0.0	\$0.00	0.0	\$0.00	0.0	\$0.00
Maple Species	0.0	\$0.00	0.0	\$0.00	376.0	\$10.51	0.0	\$0.00	0.0	\$0.00
Mixed Species	0.0	\$0.00	0.0	\$0.00	717.0	\$6.97	0.0	\$0.00	0.0	\$0.00
Beltrami Co. All Species	0.0	\$0.00	8,888.2	\$33.89	26,734.0	\$26.49	620.0	\$2.50	0.0	\$0.00

Carlton County

Agency Name: Carlton Co.		Reporting Period: 01/18 to 12/18				Reporting Basis: Appraisal Reports					
<u>Species Name</u>	Sawtimber		Pulp and Bolts		Pulpwood		Fuelwood		Biomass		
	<u>MBF</u>	<u>Avg Price</u>	<u>Cords</u>	<u>Avg Price</u>	<u>Cords</u>	<u>Avg Price</u>	<u>Cords</u>	<u>Avg Price</u>	<u>Tons</u>	<u>Avg Price</u>	
Aspen	0.0	\$0.00	0.0	\$0.00	9,105.0	\$33.09	0.0	\$0.00	0.0	\$0.00	
Balm of Gilead	0.0	\$0.00	0.0	\$0.00	0.0	\$0.00	0.0	\$0.00	0.0	\$0.00	
Birch Species	0.0	\$0.00	0.0	\$0.00	0.0	\$0.00	0.0	\$0.00	0.0	\$0.00	
Ash Species	0.0	\$0.00	0.0	\$0.00	0.0	\$0.00	0.0	\$0.00	0.0	\$0.00	
Elm Species	0.0	\$0.00	0.0	\$0.00	0.0	\$0.00	0.0	\$0.00	0.0	\$0.00	
Oak Species	0.0	\$0.00	0.0	\$0.00	0.0	\$0.00	0.0	\$0.00	0.0	\$0.00	
Basswood	0.0	\$0.00	0.0	\$0.00	0.0	\$0.00	0.0	\$0.00	0.0	\$0.00	
Mixed/Other Hdwds	0.0	\$0.00	1,975.0	\$11.82	0.0	\$0.00	0.0	\$0.00	0.0	\$0.00	
Balsam fir	0.0	\$0.00	0.0	\$0.00	120.0	\$15.00	0.0	\$0.00	0.0	\$0.00	
White Spruce	0.0	\$0.00	0.0	\$0.00	0.0	\$0.00	0.0	\$0.00	0.0	\$0.00	
Black Spruce	0.0	\$0.00	0.0	\$0.00	0.0	\$0.00	0.0	\$0.00	0.0	\$0.00	
Tamarack	0.0	\$0.00	0.0	\$0.00	0.0	\$0.00	0.0	\$0.00	0.0	\$0.00	
White Cedar	0.0	\$0.00	0.0	\$0.00	0.0	\$0.00	0.0	\$0.00	0.0	\$0.00	
Jack Pine	0.0	\$0.00	0.0	\$0.00	0.0	\$0.00	0.0	\$0.00	0.0	\$0.00	
Red Pine	0.0	\$0.00	1,175.0	\$44.03	850.0	\$2.34	0.0	\$0.00	0.0	\$0.00	
White Pine	0.0	\$0.00	0.0	\$0.00	0.0	\$0.00	0.0	\$0.00	0.0	\$0.00	
Maple Species	0.0	\$0.00	0.0	\$0.00	0.0	\$0.00	0.0	\$0.00	0.0	\$0.00	
Mixed Species	0.0	\$0.00	0.0	\$0.00	0.0	\$0.00	0.0	\$0.00	0.0	\$0.00	
Carlton Co. All Species	0.0	\$0.00	3,150.0	\$23.83	10,075.0	\$30.28	0.0	\$0.00	0.0	\$0.00	

Cass County

Agency Name: Cass Co. **Reporting Period: 01/18 to 12/18** **Reporting Basis: Appraisal Reports**

Species Name	Sawtimber		Pulp and Bolts		Pulpwood		Fuelwood		Biomass	
	MBF	Avg Price	Cords	Avg Price	Cords	Avg Price	Cords	Avg Price	Tons	Avg Price
Aspen	0.0	\$0.00	0.0	\$0.00	40,031.0	\$36.62	0.0	\$0.00	0.0	\$0.00
Balm of Gilead	0.0	\$0.00	0.0	\$0.00	112.0	\$19.78	0.0	\$0.00	0.0	\$0.00
Birch Species	0.0	\$0.00	6,517.0	\$21.35	0.0	\$0.00	0.0	\$0.00	0.0	\$0.00
Ash Species	0.0	\$0.00	1,949.0	\$16.55	0.0	\$0.00	0.0	\$0.00	0.0	\$0.00
Elm Species	0.0	\$0.00	0.0	\$0.00	0.0	\$0.00	0.0	\$0.00	0.0	\$0.00
Oak Species	0.0	\$0.00	11,082.0	\$35.11	0.0	\$0.00	0.0	\$0.00	0.0	\$0.00
Basswood	0.0	\$0.00	4,257.0	\$16.26	0.0	\$0.00	0.0	\$0.00	0.0	\$0.00
Mixed/Other Hdwds	0.0	\$0.00	110.0	\$18.91	0.0	\$0.00	0.0	\$0.00	0.0	\$0.00
Balsam fir	0.0	\$0.00	0.0	\$0.00	1,144.0	\$16.33	0.0	\$0.00	0.0	\$0.00
White Spruce	0.0	\$0.00	0.0	\$0.00	291.0	\$23.18	0.0	\$0.00	0.0	\$0.00
Black Spruce	0.0	\$0.00	0.0	\$0.00	203.0	\$12.00	0.0	\$0.00	0.0	\$0.00
Tamarack	0.0	\$0.00	0.0	\$0.00	161.0	\$7.38	0.0	\$0.00	0.0	\$0.00
White Cedar	0.0	\$0.00	0.0	\$0.00	0.0	\$0.00	0.0	\$0.00	0.0	\$0.00
Jack Pine	0.0	\$0.00	2,548.0	\$20.30	255.0	\$12.00	0.0	\$0.00	0.0	\$0.00
Red Pine	133.5	\$139.30	2,917.0	\$53.39	102.0	\$20.59	0.0	\$0.00	0.0	\$0.00
White Pine	0.0	\$0.00	0.0	\$0.00	0.0	\$0.00	0.0	\$0.00	0.0	\$0.00
Maple Species	0.0	\$0.00	3,966.0	\$19.44	0.0	\$0.00	0.0	\$0.00	0.0	\$0.00
Mixed Species	0.0	\$0.00	0.0	\$0.00	0.0	\$0.00	300.0	\$5.45	0.0	\$0.00
Cass Co. All Species	133.5	\$139.30	33,346.0	\$27.48	42,299.0	\$35.52	300.0	\$5.45	0.0	\$0.00

Clearwater County

Agency Name: Clearwater Co. Reporting Period: 01/18 to 12/18 Reporting Basis: Appraisal Reports

Species Name	Sawtimber		Pulp and Bolts		Pulpwood		Fuelwood		Biomass	
	MBF	Avg Price	Cords	Avg Price	Cords	Avg Price	Cords	Avg Price	Tons	Avg Price
Aspen	0.0	\$0.00	0.0	\$0.00	5,986.0	\$35.83	0.0	\$0.00	0.0	\$0.00
Balm of Gilead	0.0	\$0.00	0.0	\$0.00	0.0	\$0.00	0.0	\$0.00	0.0	\$0.00
Birch Species	0.0	\$0.00	10.0	\$17.00	1,510.0	\$14.41	0.0	\$0.00	0.0	\$0.00
Ash Species	6.9	\$42.03	0.0	\$0.00	7.0	\$10.00	0.0	\$0.00	0.0	\$0.00
Elm Species	0.0	\$0.00	0.0	\$0.00	0.0	\$0.00	0.0	\$0.00	0.0	\$0.00
Oak Species	342.4	\$105.00	0.0	\$0.00	2,831.0	\$24.83	0.0	\$0.00	0.0	\$0.00
Basswood	274.3	\$82.16	2,283.0	\$12.32	0.0	\$0.00	0.0	\$0.00	0.0	\$0.00
Mixed/Other Hdws	0.0	\$0.00	0.0	\$0.00	0.0	\$0.00	510.0	\$16.50	0.0	\$0.00
Balsam fir	0.0	\$0.00	0.0	\$0.00	23.0	\$7.00	0.0	\$0.00	0.0	\$0.00
White Spruce	2.7	\$80.00	0.0	\$0.00	0.0	\$0.00	0.0	\$0.00	0.0	\$0.00
Black Spruce	0.0	\$0.00	0.0	\$0.00	111.0	\$19.64	0.0	\$0.00	0.0	\$0.00
Tamarack	10.2	\$34.61	1,144.0	\$11.11	0.0	\$0.00	0.0	\$0.00	0.0	\$0.00
White Cedar	0.0	\$0.00	0.0	\$0.00	0.0	\$0.00	0.0	\$0.00	0.0	\$0.00
Jack Pine	0.0	\$0.00	0.0	\$0.00	0.0	\$0.00	0.0	\$0.00	0.0	\$0.00
Red Pine	145.0	\$200.24	0.0	\$0.00	74.0	\$20.09	0.0	\$0.00	0.0	\$0.00
White Pine	5.2	\$100.00	0.0	\$0.00	0.0	\$0.00	0.0	\$0.00	0.0	\$0.00
Maple Species	16.8	\$95.00	0.0	\$0.00	1,402.0	\$12.89	0.0	\$0.00	0.0	\$0.00
Mixed Species	0.0	\$0.00	0.0	\$0.00	0.0	\$0.00	0.0	\$0.00	0.0	\$0.00
Clearwater Co. All Species	803.5	\$112.63	3,437.0	\$11.93	11,944.0	\$27.50	510.0	\$16.50	0.0	\$0.00

Crow Wing County

Agency Name: Crow Wing Co. Reporting Period: 01/18 to 12/18 Reporting Basis: Appraisal Reports

Species Name	Sawtimber		Pulp and Bolts		Pulpwood		Fuelwood		Biomass	
	MBF	Avg Price	Cords	Avg Price	Cords	Avg Price	Cords	Avg Price	Tons	Avg Price
Aspen	0.0	\$0.00	0.0	\$0.00	10,476.0	\$36.29	0.0	\$0.00	0.0	\$0.00
Balm of Gilead	0.0	\$0.00	0.0	\$0.00	0.0	\$0.00	0.0	\$0.00	0.0	\$0.00
Birch Species	0.0	\$0.00	1,645.0	\$17.86	130.0	\$15.62	0.0	\$0.00	0.0	\$0.00
Ash Species	0.0	\$0.00	155.0	\$12.52	133.0	\$12.21	0.0	\$0.00	0.0	\$0.00
Elm Species	0.0	\$0.00	0.0	\$0.00	0.0	\$0.00	0.0	\$0.00	0.0	\$0.00
Oak Species	0.0	\$0.00	4,512.0	\$17.44	880.0	\$15.84	0.0	\$0.00	0.0	\$0.00
Basswood	0.0	\$0.00	882.0	\$14.65	0.0	\$0.00	0.0	\$0.00	0.0	\$0.00
Mixed/Other Hdwds	0.0	\$0.00	236.0	\$17.00	20.0	\$13.00	120.0	\$10.00	0.0	\$0.00
Balsam fir	0.0	\$0.00	0.0	\$0.00	118.0	\$15.00	0.0	\$0.00	0.0	\$0.00
White Spruce	0.0	\$0.00	0.0	\$0.00	25.0	\$20.00	0.0	\$0.00	0.0	\$0.00
Black Spruce	0.0	\$0.00	0.0	\$0.00	0.0	\$0.00	0.0	\$0.00	0.0	\$0.00
Tamarack	0.0	\$0.00	0.0	\$0.00	0.0	\$0.00	0.0	\$0.00	0.0	\$0.00
White Cedar	0.0	\$0.00	0.0	\$0.00	0.0	\$0.00	0.0	\$0.00	0.0	\$0.00
Jack Pine	0.0	\$0.00	105.0	\$28.67	5.0	\$13.20	0.0	\$0.00	0.0	\$0.00
Red Pine	0.0	\$0.00	2,494.0	\$56.52	291.0	\$11.14	0.0	\$0.00	0.0	\$0.00
White Pine	0.0	\$0.00	0.0	\$0.00	0.0	\$0.00	0.0	\$0.00	0.0	\$0.00
Maple Species	0.0	\$0.00	0.0	\$0.00	1,670.0	\$11.69	0.0	\$0.00	0.0	\$0.00
Mixed Species	0.0	\$0.00	0.0	\$0.00	0.0	\$0.00	0.0	\$0.00	3,042.0	\$1.00
Crow Wing Co. All Species	0.0	\$0.00	10,029.0	\$27.01	13,748.0	\$30.78	120.0	\$10.00	3,042.0	\$1.00

Hubbard County

Agency Name: Hubbard Co. Reporting Period: 01/18 to 12/18 Reporting Basis: Appraisal Reports

Species Name	Sawtimber		Pulp and Bolts		Pulpwood		Fuelwood		Biomass	
	MBF	Avg Price	Cords	Avg Price	Cords	Avg Price	Cords	Avg Price	Tons	Avg Price
Aspen	0.0	\$0.00	0.0	\$0.00	21,508.8	\$39.04	0.0	\$0.00	0.0	\$0.00
Balm of Gilead	0.0	\$0.00	0.0	\$0.00	0.0	\$0.00	0.0	\$0.00	0.0	\$0.00
Birch Species	0.0	\$0.00	556.0	\$13.88	1,807.5	\$13.43	0.0	\$0.00	0.0	\$0.00
Ash Species	0.0	\$0.00	0.0	\$0.00	131.0	\$3.97	0.0	\$0.00	0.0	\$0.00
Elm Species	0.0	\$0.00	0.0	\$0.00	0.0	\$0.00	0.0	\$0.00	0.0	\$0.00
Oak Species	0.0	\$0.00	0.0	\$0.00	1,515.0	\$20.39	0.0	\$0.00	0.0	\$0.00
Basswood	0.0	\$0.00	0.0	\$0.00	763.0	\$8.37	0.0	\$0.00	0.0	\$0.00
Mixed/Other Hdwds	0.0	\$0.00	0.0	\$0.00	15.0	\$7.93	0.0	\$0.00	0.0	\$0.00
Balsam fir	0.0	\$0.00	133.0	\$11.55	80.0	\$8.00	0.0	\$0.00	0.0	\$0.00
White Spruce	5.0	\$121.00	975.0	\$25.84	0.0	\$0.00	0.0	\$0.00	0.0	\$0.00
Black Spruce	0.0	\$0.00	0.0	\$0.00	0.0	\$0.00	0.0	\$0.00	0.0	\$0.00
Tamarack	0.0	\$0.00	0.0	\$0.00	0.0	\$0.00	0.0	\$0.00	0.0	\$0.00
White Cedar	0.0	\$0.00	0.0	\$0.00	0.0	\$0.00	0.0	\$0.00	0.0	\$0.00
Jack Pine	0.0	\$0.00	453.0	\$37.55	107.0	\$16.21	0.0	\$0.00	0.0	\$0.00
Red Pine	268.7	\$128.21	1,880.0	\$37.74	1,342.8	\$18.23	0.0	\$0.00	0.0	\$0.00
White Pine	0.0	\$0.00	0.0	\$0.00	0.0	\$0.00	0.0	\$0.00	0.0	\$0.00
Maple Species	0.0	\$0.00	0.0	\$0.00	652.0	\$7.07	0.0	\$0.00	0.0	\$0.00
Mixed Species	0.0	\$0.00	0.0	\$0.00	0.0	\$0.00	0.0	\$0.00	0.0	\$0.00
Hubbard Co. All Species	273.7	\$128.07	3,997.0	\$30.63	27,922.1	\$33.43	0.0	\$0.00	0.0	\$0.00

Koochiching County

Agency Name: Koochiching Co. Reporting Period: 01/18 to 12/18 Reporting Basis: Appraisal Reports

Species Name	Sawtimber		Pulp and Bolts		Pulpwood		Fuelwood		Biomass	
	MBF	Avg Price	Cords	Avg Price	Cords	Avg Price	Cords	Avg Price	Tons	Avg Price
Aspen	0.0	\$0.00	0.0	\$0.00	74,753.0	\$32.12	0.0	\$0.00	0.0	\$0.00
Balm of Gilead	0.0	\$0.00	0.0	\$0.00	2,154.0	\$28.17	0.0	\$0.00	0.0	\$0.00
Birch Species	0.0	\$0.00	0.0	\$0.00	3,404.0	\$6.47	10.0	\$2.00	0.0	\$0.00
Ash Species	0.0	\$0.00	0.0	\$0.00	5,417.0	\$5.95	1.0	\$6.00	0.0	\$0.00
Elm Species	0.0	\$0.00	0.0	\$0.00	0.0	\$0.00	0.0	\$0.00	0.0	\$0.00
Oak Species	0.0	\$0.00	0.0	\$0.00	0.0	\$0.00	0.0	\$0.00	0.0	\$0.00
Basswood	0.0	\$0.00	0.0	\$0.00	917.0	\$5.55	0.0	\$0.00	0.0	\$0.00
Mixed/Other Hdwds	0.0	\$0.00	0.0	\$0.00	0.0	\$0.00	0.0	\$0.00	0.0	\$0.00
Balsam fir	0.0	\$0.00	0.0	\$0.00	7,533.0	\$10.26	0.0	\$0.00	0.0	\$0.00
White Spruce	0.0	\$0.00	0.0	\$0.00	0.0	\$0.00	0.0	\$0.00	0.0	\$0.00
Black Spruce	0.0	\$0.00	0.0	\$0.00	12,663.0	\$21.12	0.0	\$0.00	0.0	\$0.00
Tamarack	0.0	\$0.00	0.0	\$0.00	3,807.0	\$5.96	0.0	\$0.00	0.0	\$0.00
White Cedar	0.0	\$0.00	0.0	\$0.00	514.0	\$5.81	0.0	\$0.00	0.0	\$0.00
Jack Pine	0.0	\$0.00	2,406.0	\$46.04	0.0	\$0.00	0.0	\$0.00	0.0	\$0.00
Red Pine	0.0	\$0.00	3,053.0	\$44.96	0.0	\$0.00	0.0	\$0.00	0.0	\$0.00
White Pine	0.0	\$0.00	0.0	\$0.00	0.0	\$0.00	0.0	\$0.00	0.0	\$0.00
Maple Species	0.0	\$0.00	0.0	\$0.00	806.0	\$6.34	0.0	\$0.00	0.0	\$0.00
Mixed Species	0.0	\$0.00	0.0	\$0.00	0.0	\$0.00	1,162.0	\$4.72	0.0	\$0.00
Koochiching Co. All Spp.	0.0	\$0.00	5,459.0	\$45.44	111,968.0	\$25.87	1,173.0	\$4.70	0.0	\$0.00

Lake County

Agency Name: Lake Co. Reporting Period: 01/18 to 12/18 Reporting Basis: Appraisal Reports

Species Name	Sawtimber		Pulp and Bolts		Pulpwood		Fuelwood		Biomass	
	MBF	Avg Price	Cords	Avg Price	Cords	Avg Price	Cords	Avg Price	Tons	Avg Price
Aspen	0.0	\$0.00	0.0	\$0.00	6,758.0	\$23.95	0.0	\$0.00	0.0	\$0.00
Balm of Gilead	0.0	\$0.00	0.0	\$0.00	224.0	\$6.64	0.0	\$0.00	0.0	\$0.00
Birch Species	0.0	\$0.00	0.0	\$0.00	4,442.0	\$9.83	0.0	\$0.00	0.0	\$0.00
Ash Species	0.0	\$0.00	0.0	\$0.00	412.0	\$5.90	0.0	\$0.00	0.0	\$0.00
Elm Species	0.0	\$0.00	0.0	\$0.00	0.0	\$0.00	0.0	\$0.00	0.0	\$0.00
Oak Species	0.0	\$0.00	3.0	\$17.00	84.0	\$9.82	0.0	\$0.00	0.0	\$0.00
Basswood	0.0	\$0.00	0.0	\$0.00	294.0	\$7.94	0.0	\$0.00	0.0	\$0.00
Mixed/Other Hdwds	0.0	\$0.00	0.0	\$0.00	0.0	\$0.00	0.0	\$0.00	0.0	\$0.00
Balsam fir	0.0	\$0.00	0.0	\$0.00	2,308.0	\$6.67	0.0	\$0.00	0.0	\$0.00
White Spruce	0.0	\$0.00	0.0	\$0.00	2,533.0	\$19.28	0.0	\$0.00	0.0	\$0.00
Black Spruce	0.0	\$0.00	2,675.0	\$27.01	0.0	\$0.00	0.0	\$0.00	0.0	\$0.00
Tamarack	0.0	\$0.00	0.0	\$0.00	302.0	\$9.49	0.0	\$0.00	0.0	\$0.00
White Cedar	0.0	\$0.00	0.0	\$0.00	0.0	\$0.00	0.0	\$0.00	0.0	\$0.00
Jack Pine	0.0	\$0.00	0.0	\$0.00	124.0	\$3.46	0.0	\$0.00	0.0	\$0.00
Red Pine	0.0	\$0.00	679.0	\$12.17	90.0	\$7.00	0.0	\$0.00	0.0	\$0.00
White Pine	0.0	\$0.00	0.0	\$0.00	50.0	\$1.00	0.0	\$0.00	0.0	\$0.00
Maple Species	0.0	\$0.00	0.0	\$0.00	4,162.0	\$9.18	0.0	\$0.00	0.0	\$0.00
Mixed Species	0.0	\$0.00	0.0	\$0.00	0.0	\$0.00	0.0	\$0.00	0.0	\$0.00
Lake Co. All Species	0.0	\$0.00	3,357.0	\$24.00	21,783.0	\$14.64	0.0	\$0.00	0.0	\$0.00

Pine County

Agency Name: Pine Co. Reporting Period: 01/18 to 12/18 Reporting Basis: Appraisal Reports

Species Name	Sawtimber		Pulp and Bolts		Pulpwood		Fuelwood		Biomass	
	MBF	Avg Price	Cords	Avg Price	Cords	Avg Price	Cords	Avg Price	Tons	Avg Price
Aspen	0.0	\$0.00	3,623.0	\$56.73	0.0	\$0.00	0.0	\$0.00	0.0	\$0.00
Balm of Gilead	0.0	\$0.00	0.0	\$0.00	0.0	\$0.00	0.0	\$0.00	0.0	\$0.00
Birch Species	0.0	\$0.00	590.0	\$21.68	0.0	\$0.00	0.0	\$0.00	0.0	\$0.00
Ash Species	0.0	\$0.00	1,331.0	\$15.37	0.0	\$0.00	0.0	\$0.00	0.0	\$0.00
Elm Species	0.0	\$0.00	0.0	\$0.00	0.0	\$0.00	0.0	\$0.00	0.0	\$0.00
Oak Species	50.5	\$120.10	0.0	\$0.00	0.0	\$0.00	0.0	\$0.00	0.0	\$0.00
Basswood	0.0	\$0.00	21.0	\$24.00	0.0	\$0.00	0.0	\$0.00	0.0	\$0.00
Mixed/Other Hdwds	0.0	\$0.00	0.0	\$0.00	155.0	\$12.08	0.0	\$0.00	0.0	\$0.00
Balsam fir	0.0	\$0.00	0.0	\$0.00	0.0	\$0.00	0.0	\$0.00	0.0	\$0.00
White Spruce	0.0	\$0.00	0.0	\$0.00	0.0	\$0.00	0.0	\$0.00	0.0	\$0.00
Black Spruce	0.0	\$0.00	0.0	\$0.00	0.0	\$0.00	0.0	\$0.00	0.0	\$0.00
Tamarack	0.0	\$0.00	0.0	\$0.00	20.0	\$5.00	0.0	\$0.00	0.0	\$0.00
White Cedar	0.0	\$0.00	0.0	\$0.00	0.0	\$0.00	0.0	\$0.00	0.0	\$0.00
Jack Pine	0.0	\$0.00	23.0	\$42.39	0.0	\$0.00	0.0	\$0.00	0.0	\$0.00
Red Pine	0.0	\$0.00	498.0	\$36.80	0.0	\$0.00	0.0	\$0.00	0.0	\$0.00
White Pine	0.0	\$0.00	6.0	\$36.83	0.0	\$0.00	0.0	\$0.00	0.0	\$0.00
Maple Species	0.0	\$0.00	0.0	\$0.00	0.0	\$0.00	0.0	\$0.00	0.0	\$0.00
Mixed Species	0.0	\$0.00	349.0	\$20.92	0.0	\$0.00	0.0	\$0.00	0.0	\$0.00
Pine Co. All Species	50.5	\$120.10	6,441.0	\$41.31	175.0	\$11.27	0.0	\$0.00	0.0	\$0.00

Wadena County

Agency Name: Wadena Co.

Reporting Period: 01/18 to 12/18

Reporting Basis: Appraisal Reports

Species Name	Sawtimber		Pulp and Bolts		Pulpwood		Fuelwood		Biomass	
	MBF	Avg Price	Cords	Avg Price	Cords	Avg Price	Cords	Avg Price	Tons	Avg Price
Aspen	0.0	\$0.00	0.0	\$0.00	0.0	\$0.00	0.0	\$0.00	0.0	\$0.00
Balm of Gilead	0.0	\$0.00	0.0	\$0.00	0.0	\$0.00	0.0	\$0.00	0.0	\$0.00
Birch Species	0.0	\$0.00	0.0	\$0.00	0.0	\$0.00	0.0	\$0.00	0.0	\$0.00
Ash Species	0.0	\$0.00	0.0	\$0.00	0.0	\$0.00	0.0	\$0.00	0.0	\$0.00
Elm Species	0.0	\$0.00	0.0	\$0.00	0.0	\$0.00	0.0	\$0.00	0.0	\$0.00
Oak Species	0.0	\$0.00	0.0	\$0.00	0.0	\$0.00	0.0	\$0.00	0.0	\$0.00
Basswood	0.0	\$0.00	0.0	\$0.00	0.0	\$0.00	0.0	\$0.00	0.0	\$0.00
Mixed/Other Hdws	0.0	\$0.00	0.0	\$0.00	0.0	\$0.00	0.0	\$0.00	0.0	\$0.00
Balsam fir	0.0	\$0.00	0.0	\$0.00	0.0	\$0.00	0.0	\$0.00	0.0	\$0.00
White Spruce	0.0	\$0.00	40.0	\$19.65	0.0	\$0.00	0.0	\$0.00	0.0	\$0.00
Black Spruce	0.0	\$0.00	0.0	\$0.00	0.0	\$0.00	0.0	\$0.00	0.0	\$0.00
Tamarack	0.0	\$0.00	0.0	\$0.00	0.0	\$0.00	0.0	\$0.00	0.0	\$0.00
White Cedar	0.0	\$0.00	0.0	\$0.00	0.0	\$0.00	0.0	\$0.00	0.0	\$0.00
Jack Pine	0.0	\$0.00	0.0	\$0.00	0.0	\$0.00	0.0	\$0.00	0.0	\$0.00
Red Pine	0.0	\$0.00	435.0	\$21.01	0.0	\$0.00	0.0	\$0.00	0.0	\$0.00
White Pine	0.0	\$0.00	0.0	\$0.00	0.0	\$0.00	0.0	\$0.00	0.0	\$0.00
Maple Species	0.0	\$0.00	0.0	\$0.00	0.0	\$0.00	0.0	\$0.00	0.0	\$0.00
Mixed Species	0.0	\$0.00	0.0	\$0.00	0.0	\$0.00	0.0	\$0.00	0.0	\$0.00
Wadena Co. All Species	0.0	\$0.00	475.0	\$20.90	0.0	\$0.00	0.0	\$0.00	0.0	\$0.00

MINNESOTA FEDERAL AGENCIES 2018

USDI - BIA

Agency Name: USDI - BIA

Reporting Period: 01/18 to 12/18

Reporting Basis: Scale Receipts

Species Name	Sawtimber		Pulp and Bolts		Pulpwood		Fuelwood		Biomass	
	MBF	Avg Price	Cords	Avg Price	Cords	Avg Price	Cords	Avg Price	Tons	Avg Price
Aspen	0.0	\$0.00	0.0	\$0.00	37,143.8	\$24.15	0.0	\$0.00	0.0	\$0.00
Balm of Gilead	0.0	\$0.00	0.0	\$0.00	2,122.2	\$24.76	0.0	\$0.00	0.0	\$0.00
Birch Species	0.0	\$0.00	0.0	\$0.00	1,475.3	\$9.63	0.0	\$0.00	0.0	\$0.00
Ash Species	11.8	\$47.03	23.4	\$21.58	1,675.3	\$8.40	0.7	\$5.71	0.0	\$0.00
Elm Species	0.0	\$0.00	0.0	\$0.00	55.0	\$8.67	0.0	\$0.00	0.0	\$0.00
Oak Species	0.0	\$0.00	0.0	\$0.00	0.0	\$0.00	0.0	\$0.00	0.0	\$0.00
Basswood	0.0	\$0.00	0.0	\$0.00	75.0	\$9.43	0.0	\$0.00	0.0	\$0.00
Mixed/Other Hdwds	0.0	\$0.00	0.0	\$0.00	0.0	\$0.00	118.8	\$7.35	0.0	\$0.00
Balsam fir	0.0	\$0.00	0.0	\$0.00	2,020.1	\$15.30	0.0	\$0.00	0.0	\$0.00
White Spruce	10.0	\$98.60	38.6	\$36.87	164.5	\$17.00	0.0	\$0.00	0.0	\$0.00
Black Spruce	0.0	\$0.00	0.0	\$0.00	3,138.4	\$29.15	0.0	\$0.00	0.0	\$0.00
Tamarack	0.0	\$0.00	2.0	\$14.00	235.6	\$7.50	0.0	\$0.00	0.0	\$0.00
White Cedar	0.0	\$0.00	2,798.8	\$9.24	0.0	\$0.00	0.0	\$0.00	0.0	\$0.00
Jack Pine	0.0	\$0.00	270.9	\$36.01	659.3	\$24.44	0.0	\$0.00	0.0	\$0.00
Red Pine	22.6	\$136.11	2.8	\$39.29	1,232.9	\$25.00	0.0	\$0.00	0.0	\$0.00
White Pine	122.3	\$130.43	55.0	\$34.75	0.0	\$0.00	0.0	\$0.00	0.0	\$0.00
Maple Species	0.0	\$0.00	0.0	\$0.00	776.1	\$8.38	0.0	\$0.00	0.0	\$0.00
Mixed Species	0.0	\$0.00	0.0	\$0.00	28.1	\$5.55	12.5	\$5.36	0.0	\$0.00
USDI – BIA All Species	166.7	\$123.39	3,191.5	\$12.41	50,801.6	\$22.83	132.0	\$7.15	0.0	\$0.00

Chippewa National Forest

Agency Name: Chippewa N.F. Reporting Period: 10/17 to 09/18 Reporting Basis: Appraisal Reports

Species Name	Sawtimber		Pulp and Bolts		Pulpwood		Fuelwood		Biomass	
	MBF	Avg Price	Cords	Avg Price	Cords	Avg Price	Cords	Avg Price	Tons	Avg Price
Aspen	0.0	\$0.00	0.0	\$0.00	42,676.7	\$44.68	0.0	\$0.00	0.0	\$0.00
Balm of Gilead	0.0	\$0.00	0.0	\$0.00	0.0	\$0.00	0.0	\$0.00	0.0	\$0.00
Birch Species	0.0	\$0.00	0.0	\$0.00	0.0	\$0.00	0.0	\$0.00	0.0	\$0.00
Ash Species	0.0	\$0.00	0.0	\$0.00	0.0	\$0.00	0.0	\$0.00	0.0	\$0.00
Elm Species	0.0	\$0.00	0.0	\$0.00	0.0	\$0.00	0.0	\$0.00	0.0	\$0.00
Oak Species	0.0	\$0.00	0.0	\$0.00	0.0	\$0.00	0.0	\$0.00	0.0	\$0.00
Basswood	0.0	\$0.00	0.0	\$0.00	0.0	\$0.00	0.0	\$0.00	0.0	\$0.00
Mixed/Other Hdwds	2,198.0	\$46.62	16,471.1	\$18.20	0.0	\$0.00	1,231.0	\$4.05	0.0	\$0.00
Balsam fir	0.0	\$0.00	4,701.7	\$25.99	0.0	\$0.00	0.0	\$0.00	0.0	\$0.00
White Spruce	93.0	\$71.20	3,398.0	\$32.17	0.0	\$0.00	0.0	\$0.00	0.0	\$0.00
Black Spruce	0.0	\$0.00	0.0	\$0.00	0.0	\$0.00	0.0	\$0.00	0.0	\$0.00
Tamarack	0.0	\$0.00	0.0	\$0.00	110.4	\$8.51	0.0	\$0.00	0.0	\$0.00
White Cedar	0.0	\$0.00	0.0	\$0.00	0.0	\$0.00	0.0	\$0.00	0.0	\$0.00
Jack Pine	80.0	\$109.56	0.0	\$0.00	0.0	\$0.00	0.0	\$0.00	0.0	\$0.00
Red Pine	4,362.0	\$150.05	6,070.0	\$27.18	0.0	\$0.00	0.0	\$0.00	0.0	\$0.00
White Pine	0.0	\$0.00	0.0	\$0.00	0.0	\$0.00	0.0	\$0.00	0.0	\$0.00
Maple Species	0.0	\$0.00	0.0	\$0.00	0.0	\$0.00	0.0	\$0.00	0.0	\$0.00
Mixed Species	0.0	\$0.00	0.0	\$0.00	0.0	\$0.00	0.0	\$0.00	6,291.0	\$0.33
Chippewa N.F. All Spp.	6,733.0	\$114.71	30,640.8	\$22.73	42,787.1	\$44.59	1,231.0	\$4.05	6,291.0	\$0.33

Superior National Forest

Agency Name: Superior N.F. Reporting Period: 10/17 to 09/18 Reporting Basis: Appraisal Reports

Species Name	Sawtimber		Pulp and Bolts		Pulpwood		Fuelwood		Biomass	
	MBF	Avg Price	Cords	Avg Price	Cords	Avg Price	Cords	Avg Price	Tons	Avg Price
Aspen	0.0	\$0.00	0.0	\$0.00	43,238.1	\$26.34	0.0	\$0.00	0.0	\$0.00
Balm of Gilead	0.0	\$0.00	0.0	\$0.00	0.0	\$0.00	0.0	\$0.00	0.0	\$0.00
Birch Species	0.0	\$0.00	0.0	\$0.00	12,979.6	\$9.39	0.0	\$0.00	0.0	\$0.00
Ash Species	0.0	\$0.00	0.0	\$0.00	0.0	\$0.00	0.0	\$0.00	0.0	\$0.00
Elm Species	0.0	\$0.00	0.0	\$0.00	0.0	\$0.00	0.0	\$0.00	0.0	\$0.00
Oak Species	0.0	\$0.00	0.0	\$0.00	0.0	\$0.00	0.0	\$0.00	0.0	\$0.00
Basswood	0.0	\$0.00	0.0	\$0.00	0.0	\$0.00	0.0	\$0.00	0.0	\$0.00
Mixed/Other Hdwds	0.0	\$0.00	1,664.0	\$11.39	13,377.6	\$5.24	276.0	\$10.07	0.0	\$0.00
Balsam fir	0.0	\$0.00	0.0	\$0.00	10,018.7	\$8.18	0.0	\$0.00	0.0	\$0.00
White Spruce	0.0	\$0.00	2,706.0	\$27.77	9,963.6	\$15.94	0.0	\$0.00	0.0	\$0.00
Black Spruce	0.0	\$0.00	0.0	\$0.00	0.0	\$0.00	0.0	\$0.00	0.0	\$0.00
Tamarack	0.0	\$0.00	0.0	\$0.00	0.0	\$0.00	333.2	\$0.81	0.0	\$0.00
White Cedar	0.0	\$0.00	0.0	\$0.00	0.0	\$0.00	0.0	\$0.00	0.0	\$0.00
Jack Pine	0.0	\$0.00	3,430.0	\$22.48	3,384.3	\$12.73	0.0	\$0.00	0.0	\$0.00
Red Pine	1,344.0	\$97.34	0.0	\$0.00	8,827.6	\$8.78	0.0	\$0.00	0.0	\$0.00
White Pine	0.0	\$0.00	0.0	\$0.00	0.0	\$0.00	0.0	\$0.00	0.0	\$0.00
Maple Species	0.0	\$0.00	0.0	\$0.00	0.0	\$0.00	0.0	\$0.00	0.0	\$0.00
Mixed Species	0.0	\$0.00	0.0	\$0.00	3,811.1	\$15.01	0.0	\$0.00	330.0	\$0.33
Superior N.F. All Spp.	1,344.0	\$97.34	7,800.0	\$21.95	105,600.6	\$16.57	609.2	\$5.01	330.0	\$0.33

MINNESOTA DNR FORESTRY 2018

State Forestry

Agency Name: MnDNR Forestry		Reporting Period: 01/18 to 12/18				Reporting Basis: Appraisal Reports				
<u>Species Name</u>	Sawtimber		Pulp and Bolts		Pulpwood		Fuelwood		Biomass	
	<u>MBF</u>	<u>Avg Price</u>	<u>Cords</u>	<u>Avg Price</u>	<u>Cords</u>	<u>Avg Price</u>	<u>Cords</u>	<u>Avg Price</u>	<u>Tons</u>	<u>Avg Price</u>
Aspen	0.0	\$0.00	0.0	\$0.00	395,016.7	\$31.12	10.0	\$2.50	0.0	\$0.00
Balm of Gilead	0.0	\$0.00	0.0	\$0.00	443.0	\$20.37	0.0	\$0.00	0.0	\$0.00
Birch Species	7.3	\$61.23	8,834.0	\$17.11	12,886.9	\$12.81	50.0	\$2.50	0.0	\$0.00
Ash Species	175.1	\$212.51	17,258.0	\$11.34	7,646.3	\$10.40	83.2	\$3.09	0.0	\$0.00
Elm Species	6.1	\$54.75	0.0	\$0.00	27.0	\$7.81	0.0	\$0.00	0.0	\$0.00
Oak Species	676.0	\$263.43	16,892.0	\$27.06	1,881.6	\$20.87	75.0	\$5.93	0.0	\$0.00
Basswood	125.9	\$43.34	10,012.0	\$12.05	885.6	\$7.63	0.0	\$0.00	0.0	\$0.00
Mixed/Other Hdws	53.5	\$75.50	1,021.0	\$18.17	1,933.7	\$11.38	109.0	\$6.41	0.0	\$0.00
Balsam fir	0.0	\$0.00	5,601.7	\$23.37	25,925.4	\$17.56	5.0	\$2.60	0.0	\$0.00
White Spruce	0.0	\$0.00	29,656.8	\$26.51	13,897.3	\$21.96	0.0	\$0.00	0.0	\$0.00
Black Spruce	0.0	\$0.00	20,687.0	\$27.12	22,952.5	\$19.90	0.0	\$0.00	0.0	\$0.00
Tamarack	0.0	\$0.00	5,513.3	\$9.56	31,492.5	\$5.58	7,682.5	\$2.46	0.0	\$0.00
White Cedar	0.0	\$0.00	1,202.0	\$7.67	938.9	\$5.34	0.0	\$0.00	0.0	\$0.00
Jack Pine	0.0	\$0.00	12,986.2	\$26.45	1,298.5	\$17.81	144.2	\$2.27	0.0	\$0.00
Red Pine (a)	8,461.8	\$148.77	48,511.8	\$39.12	1,301.4	\$7.66	1,528.2	\$1.95	0.0	\$0.00
White Pine	30.6	\$120.16	666.0	\$22.35	775.1	\$6.93	113.0	\$2.41	0.0	\$0.00
Maple Species	155.6	\$95.23	9,679.9	\$15.66	26,070.2	\$14.32	60.0	\$2.50	0.0	\$0.00
Mixed Species	0.0	\$0.00	0.0	\$0.00	420.0	\$11.33	104.7	\$4.06	31,036.5	\$1.06
MnDNR Forestry All Spp.	9,691.9	\$155.07	188,521.7	\$25.94	545,792.6	\$26.44	9,964.8	\$2.47	31,036.5	\$1.06

a) Includes 3,826.0 Mbf originally sold as mixed cord products with >=\$65 per cord sell price; converted at 2 cords per Mbf.