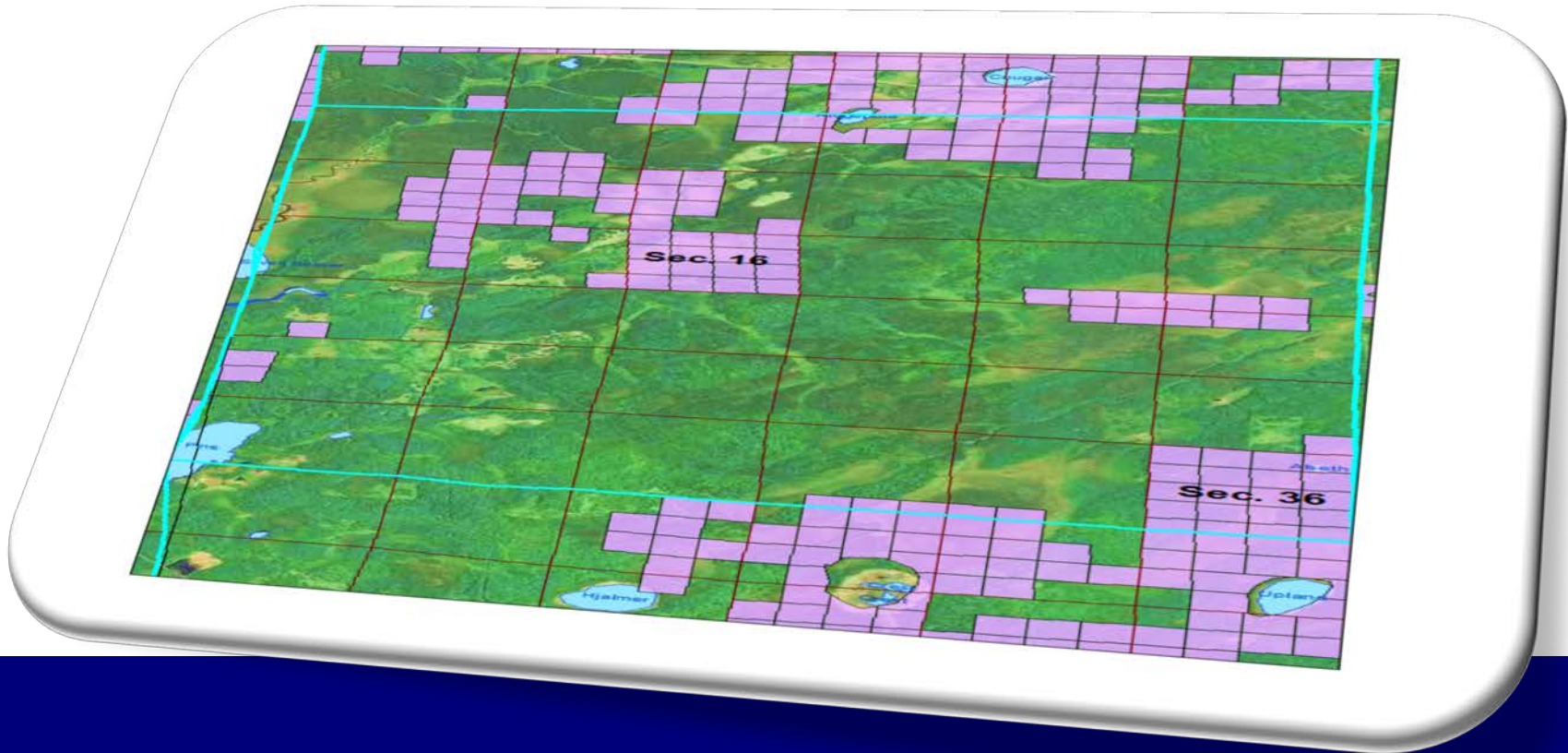


School Trust Fund Lands



Sand Dunes State Forest Stakeholder Meeting
October 24, 2016

History Lesson



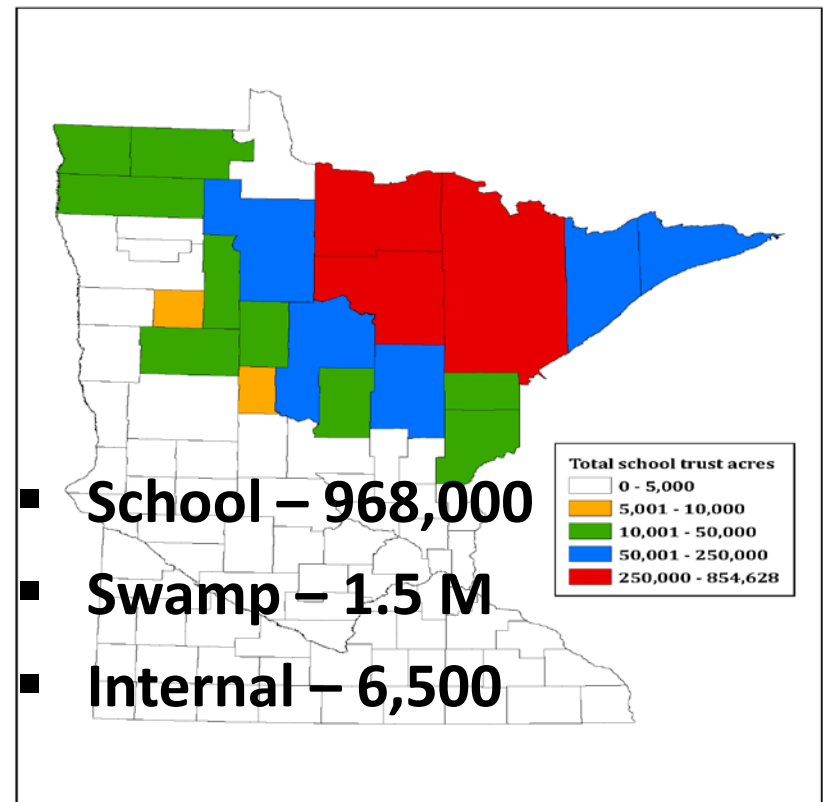
“Knowledge being necessary to good government and the happiness of mankind, schools and the means of education shall forever be encouraged.”

SCHOOL TRUST LANDS THEN & NOW

Federal Grants = 8.1M acres

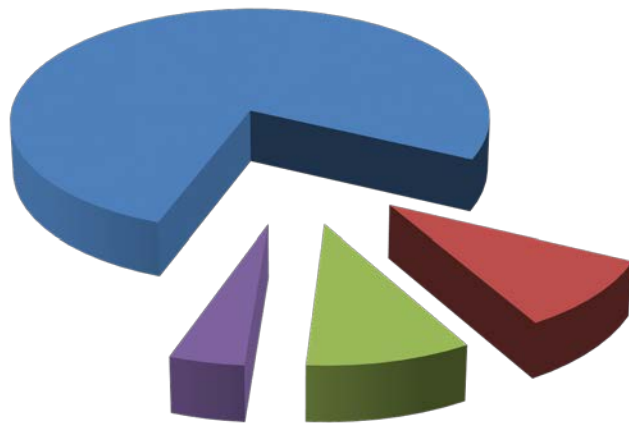
- 1857 Enabling Act (2.9m)
- 1857 In Lieu Trust Act
- 1860 Swamp Act (4.7m)
- 1866 Internal Improvement Act (500k)

2016 STL = 2.5M acres



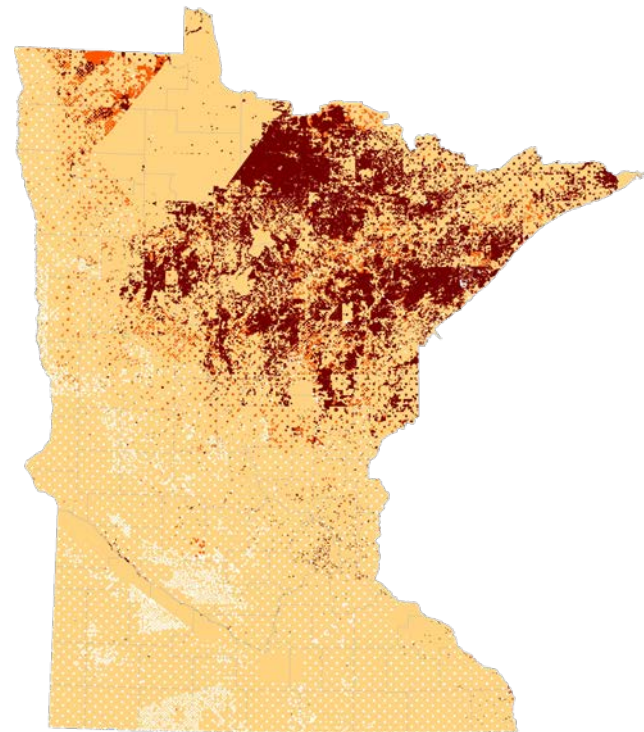
School Trust Assets

Financial
\$1.2 Billion



■ Minerals ■ Forest products
■ Real Estate ■ Investments

Land
2.5M acres



Trust Mission

Economics

- Balanced Management
 - Short term vs Long Term
 - Revenues and Conservation

- Statutory Intent
 - Control costs
 - Increase efficiencies
 - Action Plan

Sound Natural Resource

- Four Statutory References

- Ecological Benefits taken into consideration

- Best Management Practices
 - Site Level Guidelines
 - Forest Certification

A Trustee's Duty

- ❑ Minnesota's School Trust is a real trust imposing legal duties on its trustees to:
 - ❑ MANAGE IN ACCORDANCE WITH THE TRUST'S MISSION; AND
 - ❑ ACT WITH UNDIVIDED LOYALTY.
- ❑ The easiest analogy is that DNR has a contract with the Trust to manage the lands the way the Trust directs.

Sherburne County School District Map

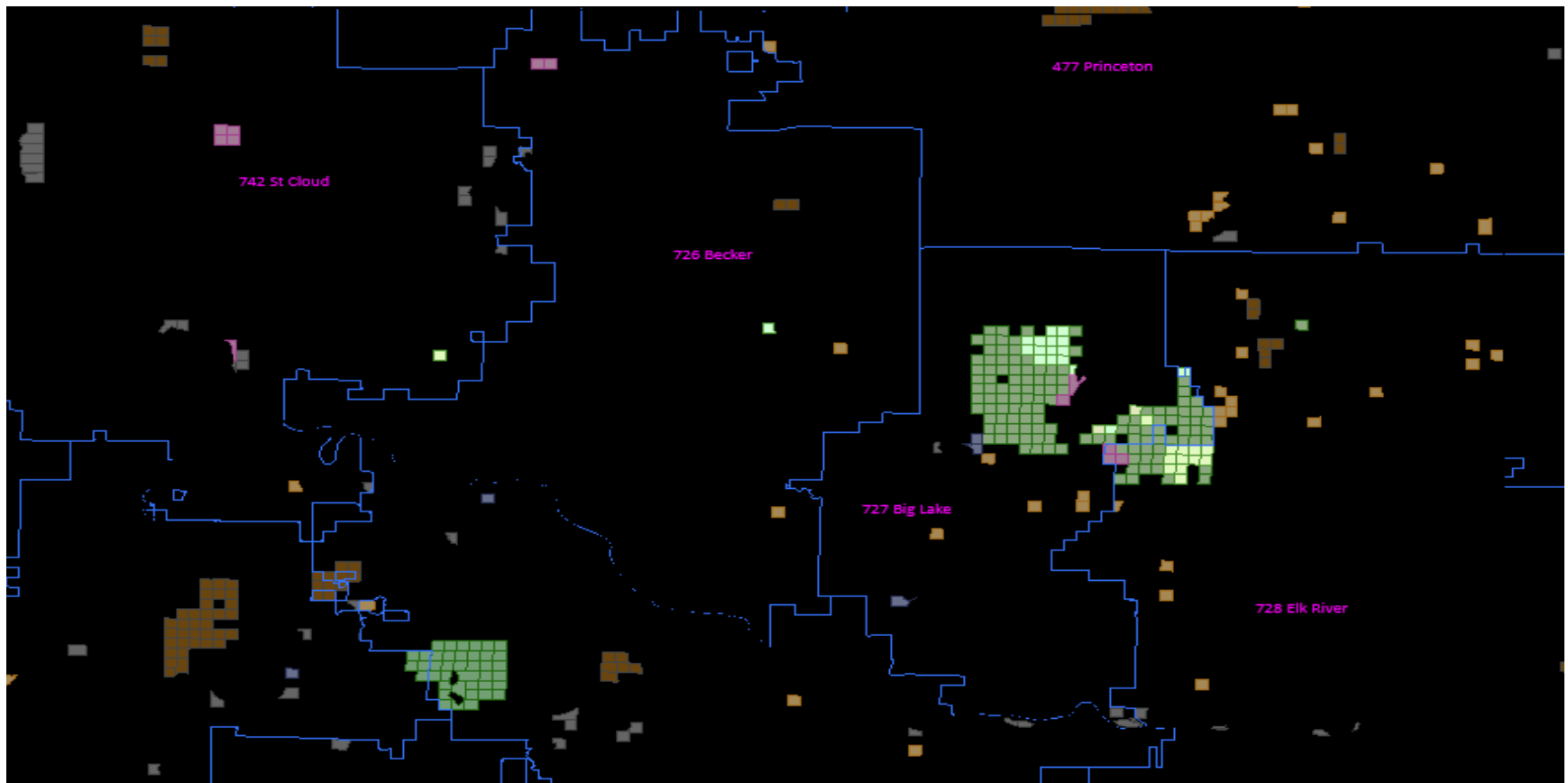
Big Lake (727) & Elk River (728)

~16,000 students

~\$500,000 / year

School Trust Land

1,100 acres



THANK YOU

Aaron Vande Linde
School Trust Lands Director
651-259-5955

aaron.vande-Linde@state.mn.us