

SFRMP Management Opportunity Area

NMOP SFRMP 2020

MANAGEMENT OPPORTUNITY AREA (MOA) DESCRIPTION	
MOA Name	Hwy 115 Ruffed Grouse Management Area
MOA Type	Small Block Habitat
Location (Eco. Section, TRS)	NMOP; T62N, R17W, Secs 16
NPC System	Cook Till Plain
Acres by Land Status (approx.)	670 acres total; all School Trust land; adjoins 40 acres County administered land managed as an RGMA.
School trust lands within this MOA	The establishment of MOAs does not supersede any current DNR policy or guideline, including school trust lands policy. Any MOA-specific management on school trust lands must occur within the parameters of the DNR's <i>Operational Order 121: Management of School Trust Lands</i> , including <i>Appendix B: Best Management Practices for Forest Management on School Trust Lands</i> . The operational order specifies maximum reserve allowances on all school trust lands, including those within MOAs. In addition, regeneration of harvested stands on school trust lands must yield fully stocked stands to ensure their future economic productivity. The DNR's <i>MOA Definition and Implementation Direction</i> documentation provides more information for managers on how to implement MOAs while also following all current DNR policy.
Current Conditions	This Management Opportunity Area is comprised of a diverse mix of productive aspen with stagnant lowland conifer, ash and lowland brush. There is one hunter walking trail located within its boundary.

FUTURE DIRECTION	
10-Year Management Intent	Maintain evenly distributed multiple age classes of aspen by harvesting in small blocks (10-40 acres preferred). Harvest should regenerate aspen but also retain significant conifer cover where appropriate for use as predator/thermal cover.
Strategies to Achieve 10-year Intent	<ul style="list-style-type: none"> • Strive to maintain multiple age classes (3-5 classes in 10-15 year increments) of aspen by harvesting in small blocks (10-40 acres preferred) • Coordinate on consolidated placement of 1-5 acre reserves (while following STH regimes) to help maintain within-stand age and structural diversity • Regenerate aspen and retain some conifers for grouse cover • Increase within-stand age and structural diversity • Provide coarse woody debris for drumming logs by retaining downed logs and standing snags, especially within reserves • Coordinate with Forestry to split 245-acre aspen stand into multiple cutting blocks distributed across the 10-year plan period

FUTURE DIRECTION	
Strategies to Achieve 10-year Intent (cont.)	<ul style="list-style-type: none"> • Use access trails to realign the hunter walking trail on the west side of unit that is inundated by beaver activity
SFRMP Goals this MOA Will Advance	<p>This MOA offers opportunities to address section-wide SFRMP goals:</p> <ul style="list-style-type: none"> • Provide a variety of vegetation conditions and habitat components at multiple scales simultaneously to support wildlife species found in the Section. • Ensure young, early-successional forest is distributed across the landscape over time. • Ensure older forest characteristics within stands are distributed across the landscape.
Direction or Consideration for Specific Stands (optional)	
Future Planning Considerations (optional)	<ul style="list-style-type: none"> • During stand selection on 10-year stand exam lists, strive to ensure 3-5 age classes of aspen 10-15 years apart will remain distributed throughout the MOA. • Expand Hunter Walking Trail network

List of stands by Stand ID from FIM

t06217w1160062

t06217w1160063

t06217w1160065

t06217w1160068

t06217w1160069

t06217w1160070

t06217w1160072

t06217w1160075

t06217w1160077

t06217w1160079

t06217w1160080

t06217w1160082

t06217w1160083

t06217w1160084

t06217w1160086

t06217w1160087

t06217w1160088

t06217w1160098

t06217w1160100

t06217w1160101

t06217w1160104

t06217w1160107

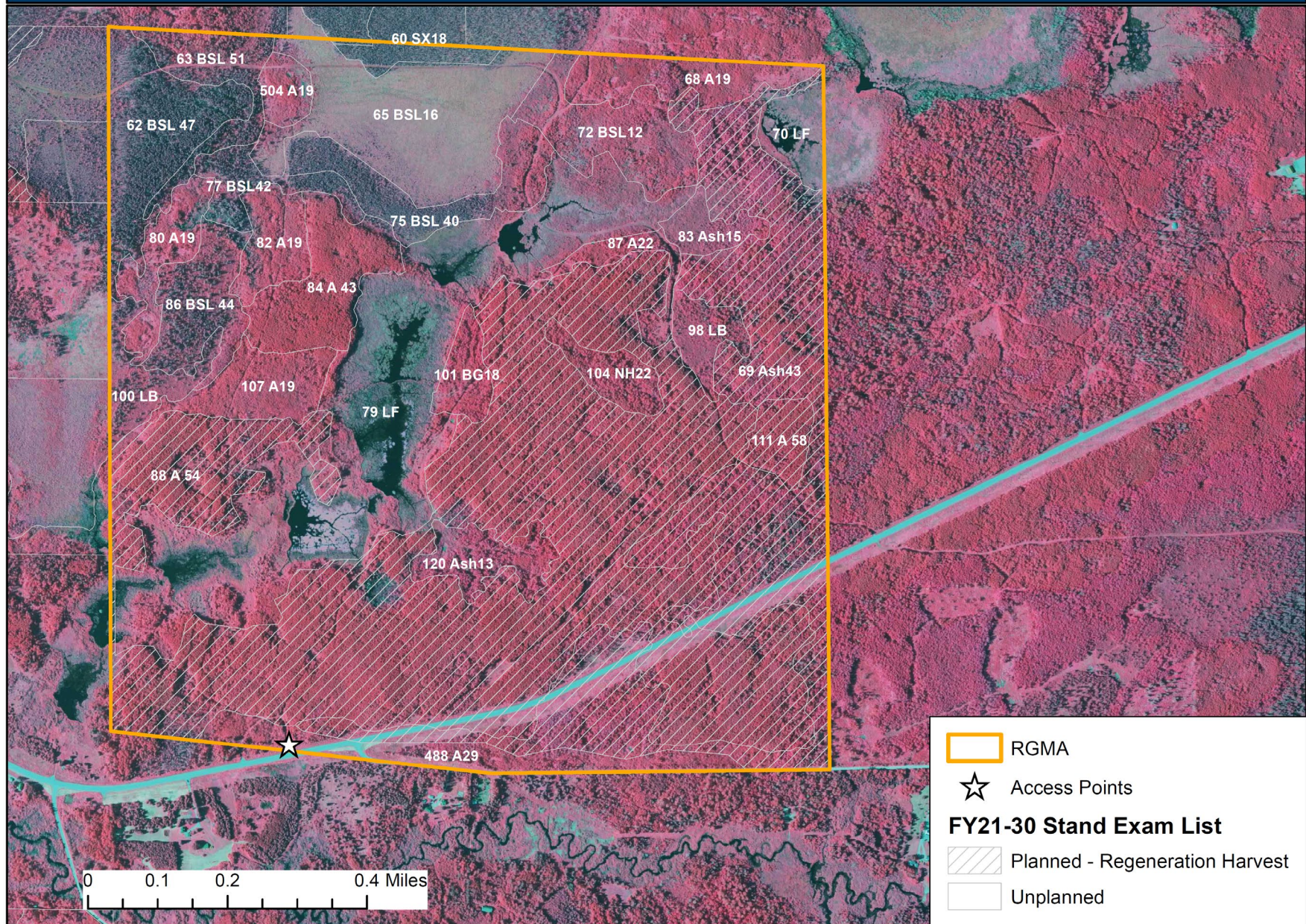
t06217w1160111

t06217w1160120

t06217w1160488

t06217w1160504

LOCAL MOA MAP



LANDSCAPE MOA MAP

