

# SFRMP Management Opportunity Area



NMOP SFRMP 2020

MANAGEMENT OPPORTUNITY AREA (MOA) DESCRIPTION	
<b>MOA Name</b>	River Road Conifers
<b>MOA Type</b>	Landscape, Cover Type Emphasis, Upland Conifer
<b>Location (Eco. Section, TRS)</b>	NMOP; T65N R24W Sec 15-16, 21-22, 27
<b>NPC Systems</b>	Mesic Hardwood, Fire Dependent, Floodplain Forest, Forested Rich Peatland
<b>Acres by Land Status (approx.)</b>	215 acres; all School Trust land and FOR administered
<b>School trust lands within this MOA</b>	The establishment of MOAs does not supersede any current DNR policy or guideline, including school trust lands policy. Any MOA-specific management on school trust lands must occur within the parameters of the DNR's <i>Operational Order 121: Management of School Trust Lands</i> , including <i>Appendix B: Best Management Practices for Forest Management on School Trust Lands</i> . The operational order specifies maximum reserve allowances on all school trust lands, including those within MOAs. In addition, regeneration of harvested stands on school trust lands must yield fully stocked stands to ensure their future economic productivity. The DNR's <i>MOA Definition and Implementation Direction</i> documentation provides more information for managers on how to implement MOAs while also following all current DNR policy.
<b>Current Conditions</b>	A mix of aspen, white spruce, balsam fir, and red pine cover types across a wide range of stand ages, with additional inclusions of black spruce and tamarack lowlands and black ash forests along the Little Fork River. The emphasis for conifer dominance in this area has been driven by a combination of factors including the riparian corridor, adjacency to old growth stands, and difficult accessibility due to steep topography. The MOA is located between Hwy 65 and the Myrtle Lake Peatland SNA along the west side of the Little Fork River. This area qualifies for the SFRMP patch size class 1 category (>640 ac).

FUTURE DIRECTION	
<b>10-Year Management Intent</b>	The goal of this MOA is to maintain or increase the conifer composition of stands within this area, while looking for opportunities to increase stand sizes and maintain or increase within-stand diversity.
<b>Strategies to Achieve 10-year Intent</b>	<ul style="list-style-type: none"> <li>Focus management activities on maintaining or increasing conifer dominance, and refer to native plant community information for direction on suitable tree species at the site-level.</li> </ul>

## FUTURE DIRECTION

### Strategies to Achieve 10-year Intent (cont.)

- In general, increase long-lived conifer species such as white cedar, white spruce, and white pine on mesic sites especially in the river corridor. On drier, sandier sites, favor jack pine and red pine as suitable.
- Different from SFRMP patches, there is no specific age goal for this MOA. Maintaining a range of age classes and growth stage conditions would be appropriate as long as the MOA develops into a contiguous area of conifer habitat.
- While promoting conifer components, look for opportunities to increase or maintain structural diversity as well, including large snags, downed logs, and varying size canopy gaps and levels of shrub layer development, which benefit bird and small mammal species diversity. Species of Greatest Conservation Need (SGCN) such as black-backed woodpecker, blackburnian warbler, bay-breasted warbler, northern goshawk would benefit from these older conifer forest characteristics.
- Evaluate the potential for intermediate treatments in the stands in this MOA to accelerate the development of conifer dominance in this area, including underplanting or seeding, and competition control projects.
- Attempt to discriminate against aspen encroachment, and look for opportunities for site conversion back to conifer cover types where appropriate. Maintain overall native plant community compositional and structural diversity while attempting any active cover type conversions or competition control activities.

### SFRMP Goals this MOA Will Advance

This MOA offers opportunities to address section-wide SFRMP goals:

- Maintain or increase the diversity of species, ages, and structure within stands
- Manage riparian areas to provide vegetation conditions associated with habitat for fish, wildlife, and plant species.
- Provide a variety of vegetation conditions and habitat components at multiple scales simultaneously to support wildlife species found in the Section.
- Maintain or enhance vegetation conditions associated with known occurrences of Species of Greatest Conservation Need.

### Direction or Consideration for Specific Stands (optional)

Several designated old growth stands are present within the southeastern portion of this MOA. Refer to the old growth ArcGIS QuickLayers resources to appropriately identify and apply special management zones around these stands.

### Future Planning Considerations (optional)

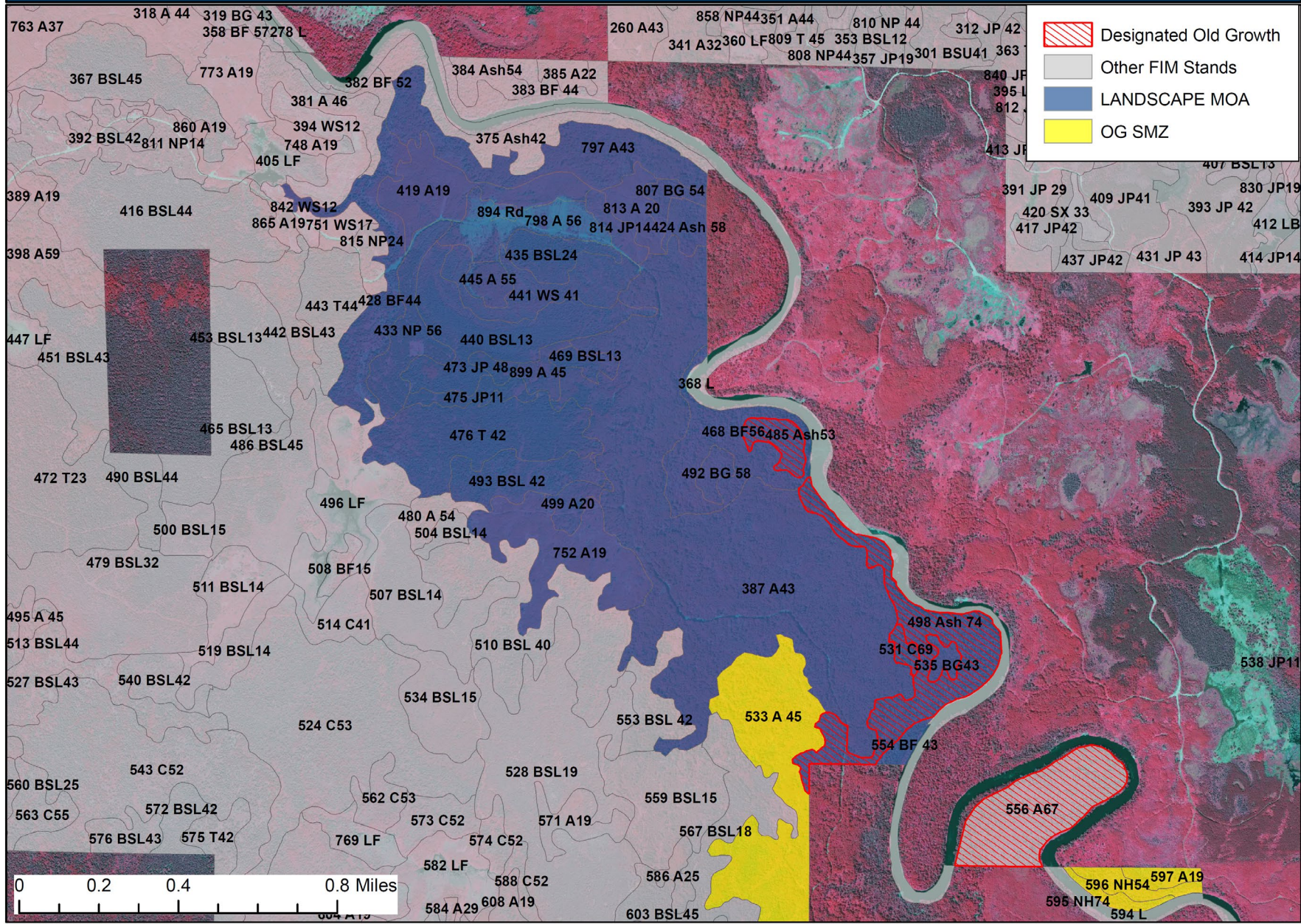
Long-term goals for future consideration:

- Stand boundaries dissolve over time as similar stands are managed based on NPC boundaries.
- Maintain this area as a conifer-dominated landscape, but refer to the latest climate change science on projected tree species adaptability.
- Monitor for invasive insect or disease issues that may affect a conifer-dominant patch (e.g. mountain pine beetle, shoot blights, etc.)

**Attach a list of stands by Stand ID from FIM**

t06524w1150468  
t06524w1150485  
t06524w1150813  
t06524w1150814  
t06524w1160419  
t06524w1160433  
t06524w1160435  
t06524w1160473  
t06524w1160475  
t06524w1220492  
t06524w1220498  
t06524w1220531  
t06524w1220535  
t06524w1220554

# LOCAL MOA MAP



# LANDSCAPE MOA MAP

