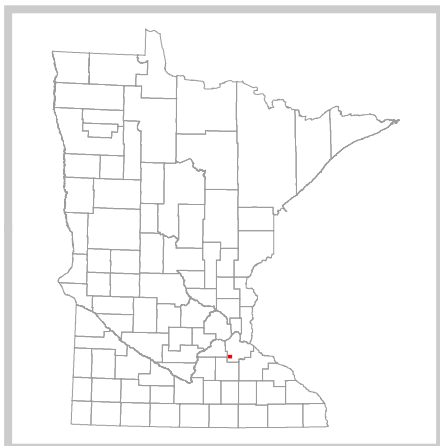
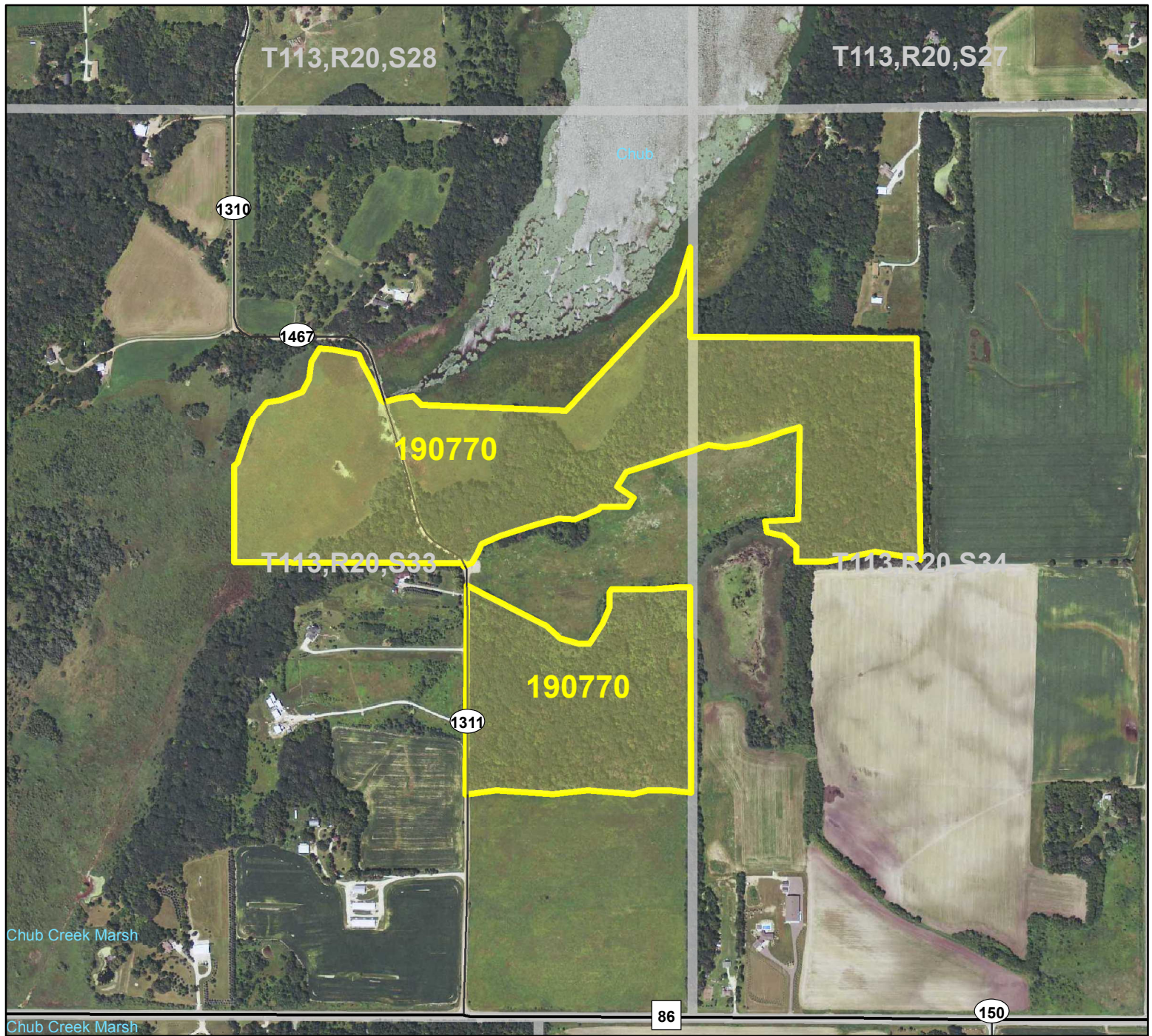


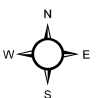
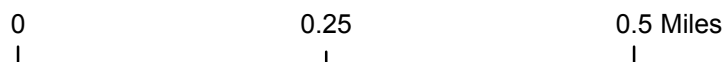
HCVF Site 190770

Chub Lake South, Dakota County



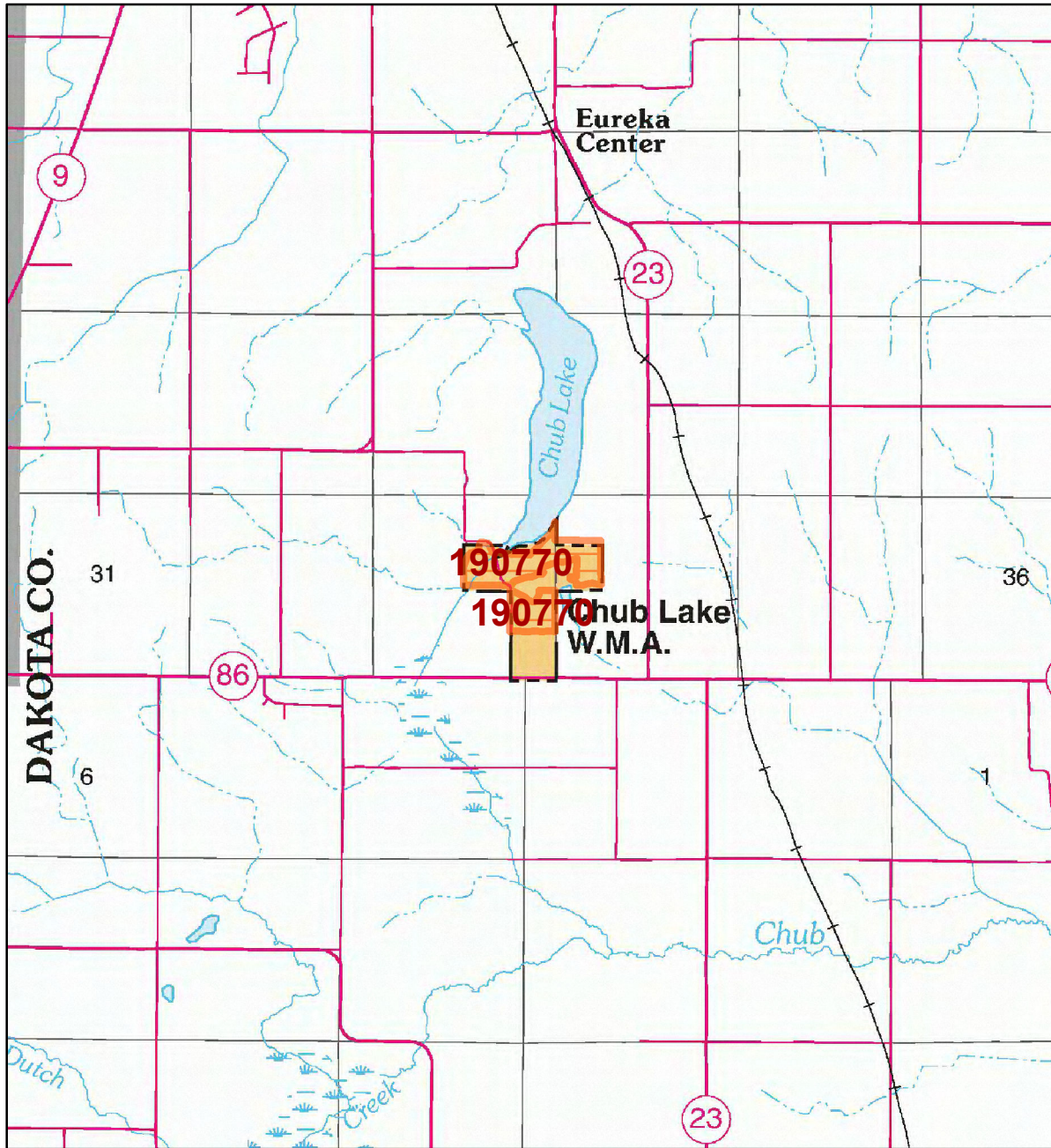
Legend

- County Highways
- Municipal, Township or Other Roads
- HCVF Site
- PLS Sections



HCVF Site 190770

Chub Lake South, Dakota County



LEGEND

HCVF Site

MAP EXPLANATION

LAND OWNERSHIP

- County Land
- Recreation Area under 40 acres
- State Forest Land
- State Park and Recreation Land
- State Wildlife Management Area Land
- W.M.A.'s under 40 acres
- State Scientific & Natural Area Land
- S.N.A.'s under 40 acres
- National Waterfowl Production Area
- N.W.P.A.'s under 40 acres
- National Forest, Park, Wildlife Refuge & Recreation Land
- Bureau of Indian Affairs Land

BOUNDARIES

- County Unit Boundary
- State Unit Boundary
- National Unit Boundary

TRAILS AND FOREST ROADS

- State Trail
- State Forest Road

DESIGNATED WATERWAYS

- State Trout Stream
- State Canoe and Boating Route
- State Wild, Scenic & Recreational River (also designated Canoe & Boating Route)
- National Wild, Scenic & Recreational River (also designated Canoe & Boating Route)

FACILITIES

- D.N.R. Office
- Travel Information Center
- Rest Area (with facilities)
- Rest Area (limited facilities)
- Campground
- Watercraft Camping
- Equestrian Camping
- Water Access
- Carry-in Access
- Dam (on designated canoe route)
- Fishing Pier
- Overlook
- Parking
- Historic Site
- Geologic Feature
- Fish Hatchery
- Forestry Nursery
- National Great River Road
- State Great River Road

NOTE: Some of the features defined in this map explanation may not occur on the map.

The PRIM series was developed using funds provided through the Legislative Commission on Minnesota Resources (LCMR).

Base information was compiled from 1:100,000 series U.S. Geologic Survey planimetric maps.

Facility and ownership information was compiled from the following sources: Minnesota Department of Natural Resources, Minnesota Department of Transportation, State Planning Agency, Minnesota Historical Society and the respective counties.



0 1.5 3 Miles

Land ownership categories on this map are in some cases outdated. HCVF sites are on DNR-managed land only; DNR HCVF sites have not been identified on other ownerships.



HCVF Informational Report

Report Run: September 3, 2013

General Information

HCVF #: 190770

HCVF Name: Chub Lake South

Acres of HCVF site: 114.76

County: Dakota

Data edited by: Region 3 HCVF Team

Role: Region 3 HCVF Team

Date edited on: 2013-07-24

Corresponding Land Administrator(s): FAW

Management Unit Name(s) (if applicable): Chub Lake WMA

HCVF Summary

Good quality mesic oak forest on nw-facing slopes with wet meadow and shrub swamp along the east shore of Chub Lake and Chub Creek, on rolling topography of Des Moines Lobe till. Exotics and armed shrubs locally abundant; evidence of past grazing. Trees even-aged with multiple stems. A rare forest herb is known from only two other locations on public land (state parks) in the state. Management to maintain and enhance this species is needed. A significant population of waterwillow (*Decodon verticillatus*) occurs in wetlands in the site and throughout Chub Lake's shore - this is a major disjunct population from the rest of its range. Cerulean warblers recorded in the forest.

HCVs known to be present that factored into HCVF designation.

FSC expects DNR to maintain HCVs within designated HCVFs. Because HCVF boundaries are not the same as the larger, multi-ownership MBS Sites, this list will differ from the values identified during the MBS Survey.

HCV1b (S1 or S2 species): 1 vascular plant species. HCV1g (Outstanding Key Habitats Examples): Forest-Upland Deciduous (Hardwood); Wetland-Nonforest. HCV3c (Special S3 plant community): MHs38c.

Management Considerations

Overall management objectives for the entire HCVF:

Maintain overall canopy cover; consider light surface fires through forest and wetlands; control invasive shrub species.

Management direction from the following sources was considered in developing the above recommendations:

No information entered.

Are the HCVs within this HCVF likely to benefit from coordination with adjacent landowner(s)?

Yes

This HCVF was flagged by the Regional HCVF Team as warranting cross-ownership coordination efforts. The specific HCVs likely to benefit from such coordination with adjacent landowners are identified below.

Forest and wetlands continue onto adjacent private lands, as do the lake, creek, and the population of waterwillow.

General Comments

This area was included in a special regulations area to keep off-road vehicles out of the esker/tunnel valley areas during the trail inventory/planning process.

Reference to rare plants and animals, Minnesota Biological Survey Sites of Biological Significance and mapped native plant communities are records maintained in the Minnesota DNR's Natural Heritage Information System (NHIS). A date of information is associated with each record. The NHIS is continually updated as new information becomes available. The lack of data listed for any geographic area should not be construed to mean that no significant features are present.

... Report End ...