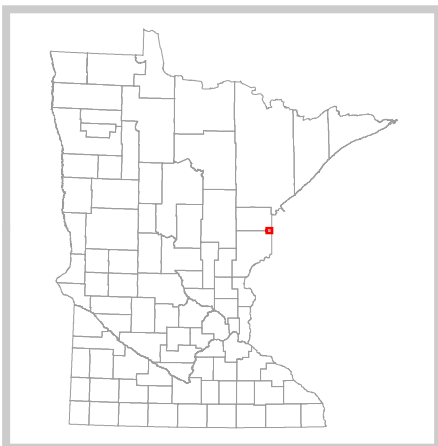
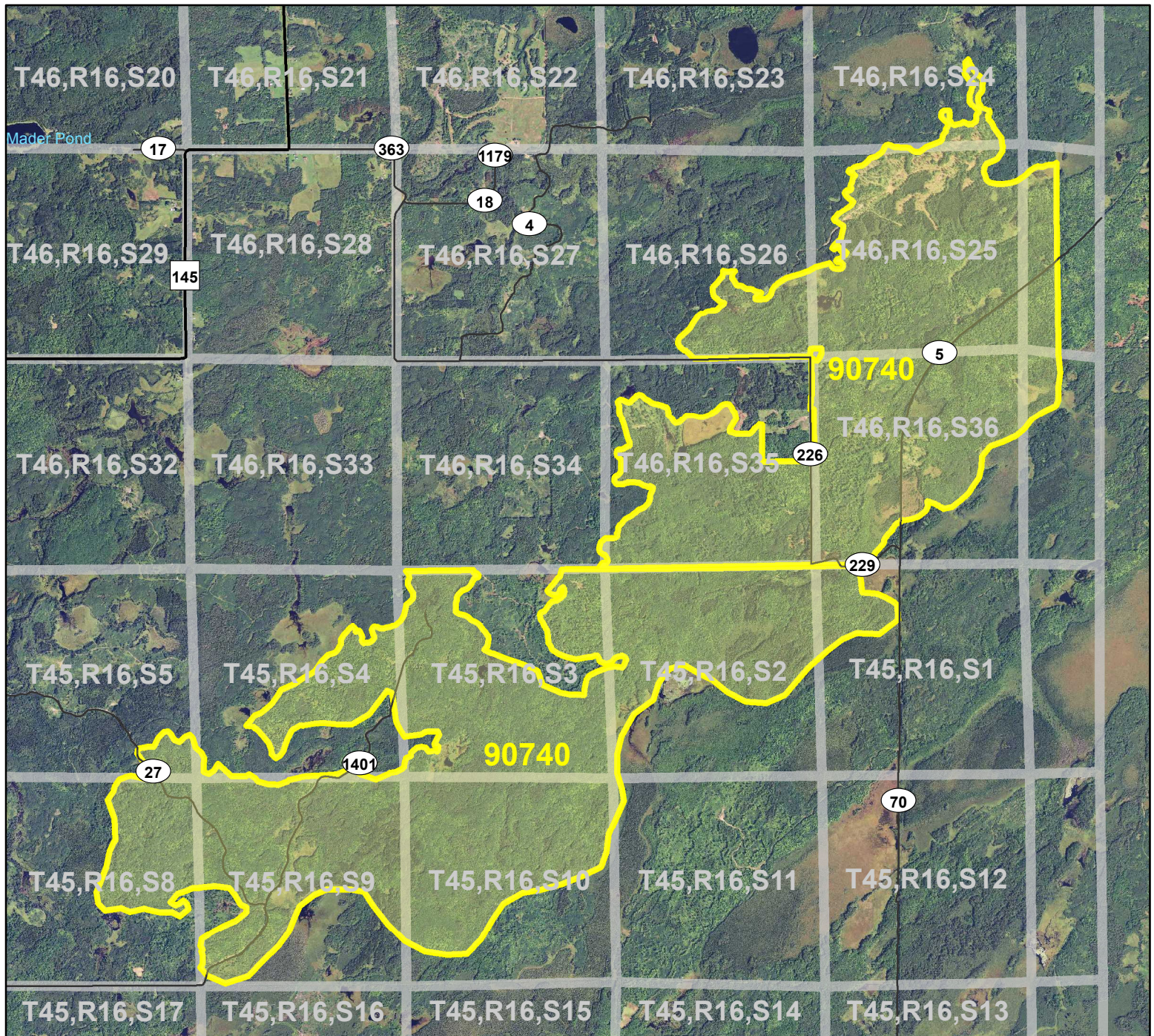


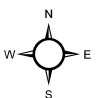
HCVF Site 90740

Holyoke Hardwoods, Carlton County



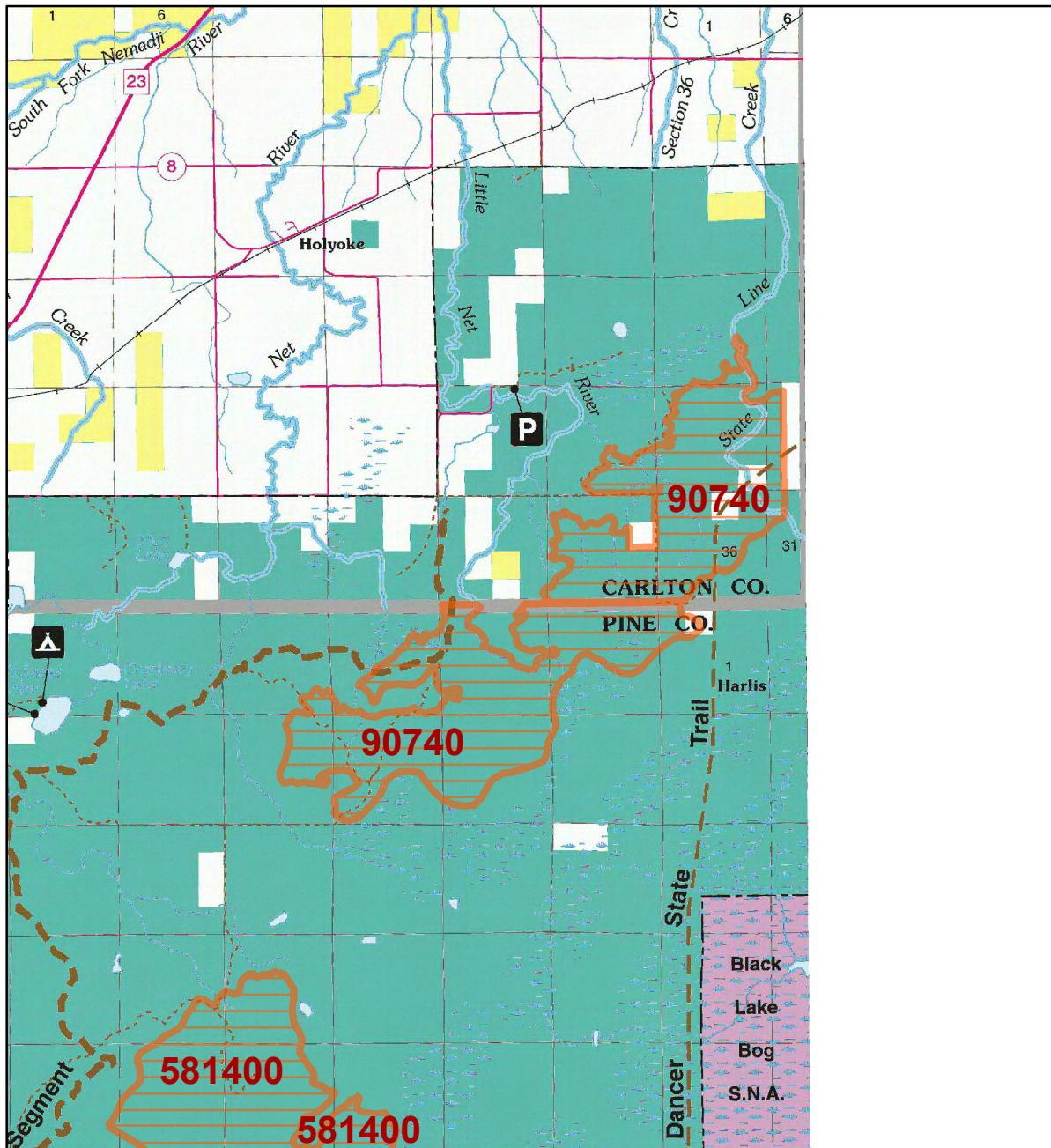
Legend

- County Highways
- Municipal, Township or Other Roads
- HCVF Site
- PLS Sections



HCVF Site 90740

Holyoke Hardwoods, Carlton County



LEGEND

HCVF Site

MAP EXPLANATION

LAND OWNERSHIP

- County Land
- Recreation Area under 40 acres
- State Forest Land
- State Park and Recreation Land
- State Wildlife Management Area Land
- W.M.A.'s under 40 acres
- State Scientific & Natural Area Land
- S.N.A.'s under 40 acres
- National Waterfowl Production Area
- N.W.P.A.'s under 40 acres
- National Forest, Park, Wildlife Refuge & Recreation Land
- Bureau of Indian Affairs Land

BOUNDARIES

- County Unit Boundary
- State Unit Boundary
- National Unit Boundary

TRAILS AND FOREST ROADS

- State Trail
- State Forest Road

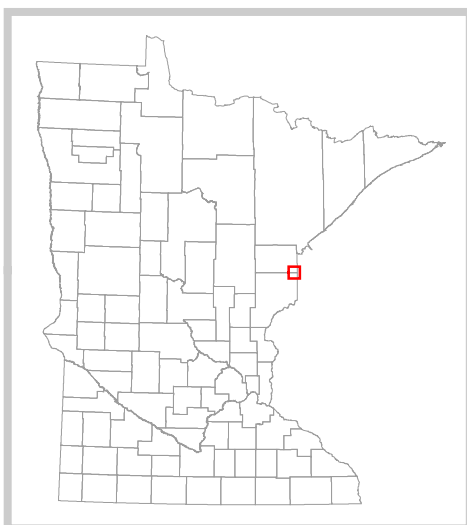
DESIGNATED WATERWAYS

- State Trout Stream
- State Canoe and Boating Route
- State Wild, Scenic & Recreational River (also designated Canoe & Boating Route)
- National Wild, Scenic & Recreational River (also designated Canoe & Boating Route)

FACILITIES

- D.N.R. Office
- Travel Information Center
- Rest Area (with facilities)
- Rest Area (limited facilities)
- Campground
- Watercraft Camping
- Equestrian Camping
- Water Access
- Carry-in Access
- Dam (on designated canoe route)
- Fishing Pier
- Overlook
- Parking
- Historic Site
- Geologic Feature
- Fish Hatchery
- Forestry Nursery
- National Great River Road
- State Great River Road

NOTE: Some of the features defined in this map explanation may not occur on the map.



The PRIM series was developed using funds provided through the Legislative Commission on Minnesota Resources (LCMR).

Base information was compiled from 1:100,000 series U.S. Geologic Survey planimetric maps.

Facility and ownership information was compiled from the following sources: Minnesota Department of Natural Resources, Minnesota Department of Transportation, State Planning Agency, Minnesota Historical Society and the respective counties.



0 2.5 5 Miles

Land ownership categories on this map are in some cases outdated. HCVF sites are on DNR-managed land only; DNR HCVF sites have not been identified on other ownerships.



HCVF Informational Report

Report Run: September 3, 2013

General Information

HCVF #: 90740

HCVF Name: Holyoke Hardwoods

Acres of HCVF site: 3874.00

County: Carlton

Data edited by: NE HCVF Workgroup

Role: NE HCVF Workgroup

Date edited on: 2013-07-26

Corresponding Land Administrator(s): DNR Forestry

Management Unit Name(s) (if applicable): Nemadji State Forest

HCVF Summary

Site contributes to one of the least fragmented, least developed areas in the WSU section. Site straddles the Carlton/Pine county line with about equal acreage on both sides. Predominately MHn with small to medium sized wetlands & numerous ephemeral ponds on classic pitted, end-moraine topography; provides critical habitat for rare salamander and rare fern species. Notable rare species in the site include Blunt-lobed Grapefern (E) locations, Four-toed Salamander (SPC) and Spotted Salamander (SPC) records, and two tracked rare plants. The overall landscape area of the site is good, with high quality matrix and small patch native plant communities (including S3s) and a high potential for intact ecological functioning. Site contains surface water features with intact corridors/buffers of native vegetation, and a landscape context with connections to significant natural areas to the south, NW and east in Wisconsin. As a unit, it is one of the best landscape areas in the subsection/section. Although portions of the site have been recently managed towards young forest, large blocks of mature forest and continuous canopy still exist. Rare species habitat is abundant in the more mature and undisturbed portions of the site. RR grade, currently managed as recreational trail, bisects the site SW/NE. Abuts Wisconsin. Many upland soil types in this site are considered highly erodible.

HCVs known to be present that factored into HCVF designation.

FSC expects DNR to maintain HCVs within designated HCVFs. Because HCVF boundaries are not the same as the larger, multi-ownership MBS Sites, this list will differ from the values identified during the MBS Survey.

HCV1b (S1 or S2 species): 1 Botrychium. HCV1e (Rare species concentration): 2 amphibians. HCV1f (Taxonomic group concentration): 2 amphibians. HCV1g (Outstanding Key Habitats Examples): Forest lowland conifer, Forest upland conifer (limited), Upland forest deciduous- mixed hardwood-pine (limited). HCV2-LMFa (Large habitat block): Matrix forest of upland with wetland. HCV2-LMFbi (late-successional forest block): potential exists. HCV2-LMFbii (blocks with rare species): yes. HCV3c (Special S3 plant community): MHn47a, WFn55b. HCV3d (Natural origin pine stand): 11 acres red pine. HCV3e (Old-growth forest): NH.

Management Considerations

Overall management objectives for the entire HCVF:

Maintain/enhance rare plant locations - maintain existing canopy cover and ground layer conditions. Maintain/enhance rare amphibian locations and habitat; develop DNR salamander management guidance that meet HCVF standards. Maintain/enhance >500 acre blocks around potential designated OG (OFMCs) or as part of SFRMP old, large patches. Maintain/enhance >500 blocks around forested areas with rare salamanders or rare ferns. Apply DNR HCV General Landscape Guidance. Silviculture in rare native plant communities maintains or enhances the floristic, structural, and spatial components that define the native plant community; see SRM Objective code CON1. Field verify potential natural origin pine stands. Look for opportunities to maintain/enhance/create mixed hardwood - pine native plant communities.

Management direction from the following sources was considered in developing the above recommendations:

MLU SFRMP

Are the HCVs within this HCVF likely to benefit from coordination with adjacent landowner(s)?

No

General Comments

HCV 3e: No current designated old growth; one NH stand under review per FSC Type II OG CAR.

Reference to rare plants and animals, Minnesota Biological Survey Sites of Biological Significance and mapped native plant communities are records maintained in the Minnesota DNR's Natural Heritage Information System (NHIS). A date of information is associated with each record. The NHIS is continually updated as new information becomes available. The lack of data listed for any geographic area should not be construed to mean that no significant features are present.

... Report End ...