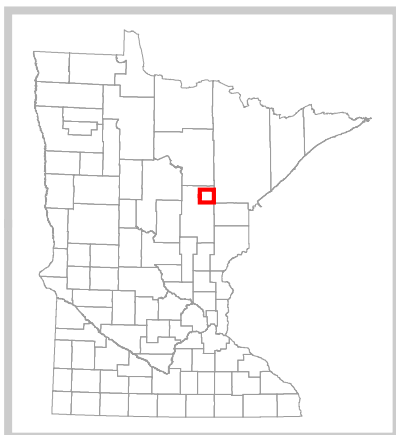
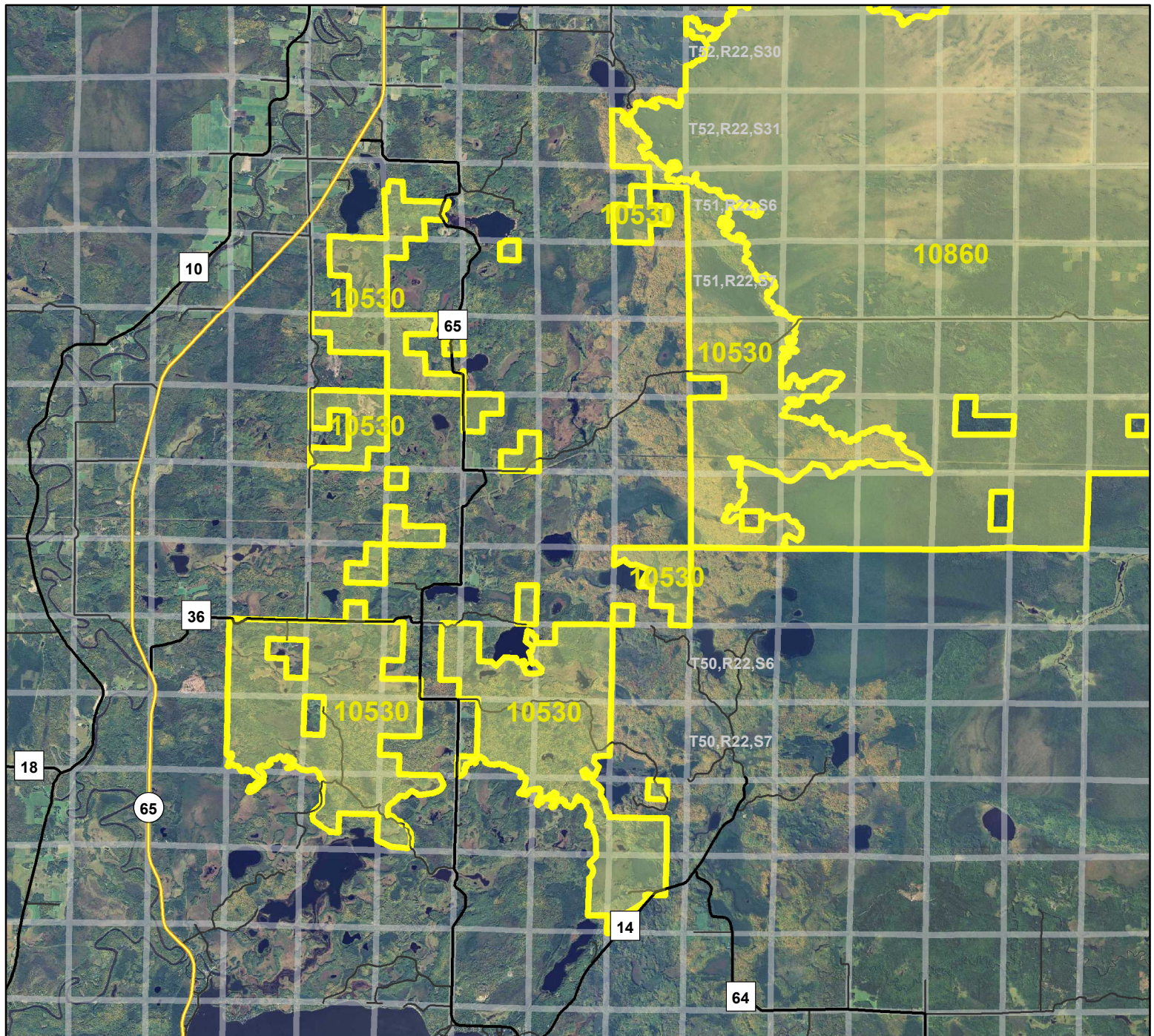


HCVF Site 10530

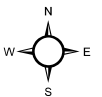
Savanna Hardwoods, Aitkin County



Legend

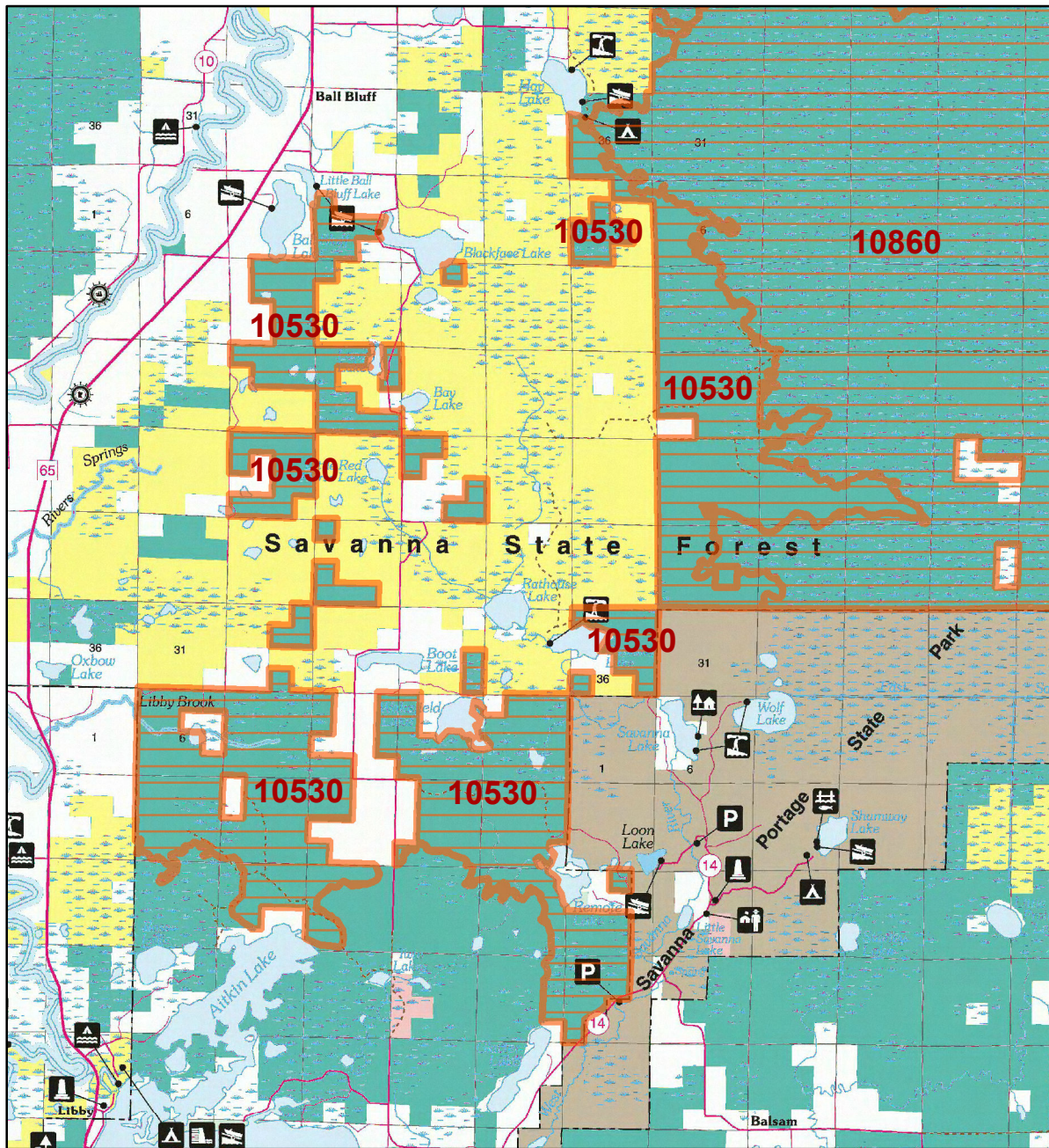
- State Trunk Highways
- County Highways
- Municipal, Township or Other Roads
- HCVF Site
- PLS Sections

0 3 6 Miles



HCVF Site 10530

Savanna Hardwoods, Aitkin County



LEGEND

HCVF Site

MAP EXPLANATION

LAND OWNERSHIP

- County Land
- State Forest Land
- State Park and Recreation Land
- State Wildlife Management Area Land
- State Scientific & Natural Area Land
- National Waterfowl Production Area
- National Forest, Park, Wildlife Refuge & Recreation Land
- Bureau of Indian Affairs Land
- Recreation Area under 40 acres
- W.M.A.'s under 40 acres
- S.N.A.'s under 40 acres
- N.W.P.A.'s under 40 acres

BOUNDARIES

- County Unit Boundary
- State Unit Boundary
- National Unit Boundary

TRAILS AND FOREST ROADS

- State Trail
- State Forest Road

DESIGNATED WATERWAYS

- State Trout Stream
- State Canoe and Boating Route
- State Wild, Scenic & Recreational River (also designated Canoe & Boating Route)
- National Wild, Scenic & Recreational River (also designated Canoe & Boating Route)

FACILITIES

- D.N.R. Office
- Travel Information Center
- Rest Area (with facilities)
- Rest Area (limited facilities)
- Campground
- Watercraft Camping
- Equestrian Camping
- Water Access
- Carry-in Access
- Dam (on designated canoe route)
- Fishing Pier
- Overlook
- Parking
- Historic Site
- Geologic Feature
- Fish Hatchery
- Forestry Nursery
- National Great River Road
- State Great River Road

NOTE: Some of the features defined in this map explanation may not occur on the map.

The PRIM series was developed using funds provided through the Legislative Commission on Minnesota Resources (LCMR).

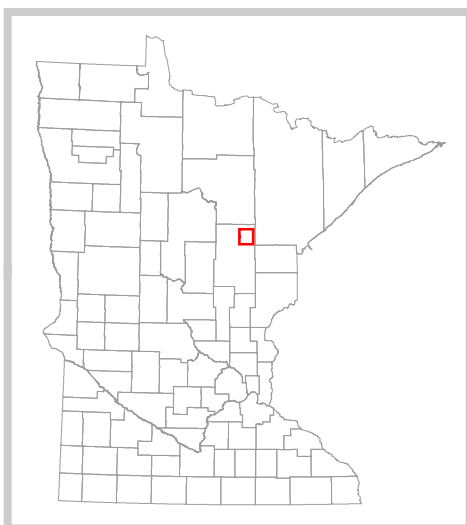
Base information was compiled from 1:100,000 series U.S. Geologic Survey planimetric maps.

Facility and ownership information was compiled from the following sources: Minnesota Department of Natural Resources, Minnesota Department of Transportation, State Planning Agency, Minnesota Historical Society and the respective counties.



0 3.25 6.5 Miles

Land ownership categories on this map are in some cases outdated. HCVF sites are on DNR-managed land only; DNR HCVF sites have not been identified on other ownerships.



HCVF Informational Report

Report Run: September 3, 2013

General Information

HCVF #: 10530

HCVF Name: Savanna Hardwoods

Acres of HCVF site: 13305.13

County: Aitkin

Data edited by: NE HCVF Workgroup

Role: NE HCVF Workgroup

Date edited on: 2013-07-26

Corresponding Land Administrator(s): DNR Forestry

Management Unit Name(s) (if applicable): Savanna State Forest

HCVF Summary

Large upland dominated site with classic end moraine topography-rolling hills and numerous small isolated wetlands (acid and non-acid peatlands); highest concentration of old forests in the county (mesic hardwoods, spruce and cedar swamps). Many rare species; portion of area designated by Aitkin County as HCVF. FDC34a. Abuts Savanna Portage SP on the SE. Four-toed salamander, red-shouldered hawk., and rare ferns.

HCVs known to be present that factored into HCVF designation.

FSC expects DNR to maintain HCVs within designated HCVFs. Because HCVF boundaries are not the same as the larger, multi-ownership MBS Sites, this list will differ from the values identified during the MBS Survey.

HCV1b (S1 or S2 species): 4 Botrychium (spp.). HCV1e (Rare species concentration): 1 rare raptor, SGCN birds, 5 Botrychium (spp.), 1 amphibian. HCV1f (Taxonomic group concentration): SGCN birds, 6 Botrychium (spp.). HCV2-LMFa (Large habitat block): upland/wetland matrix forest. HCV2-LMFbi (late-successional forest block): potential exists. HCV2-LMFbii (blocks with rare species): yes. HCV3c (Special S3 plant community): MHN47a, others? " native plant community mapping incomplete. HCV3d (Natural origin pine stand): 15 acres red pine. HCV3e (Old-growth forest): NH and WP.

Management Considerations

Overall management objectives for the entire HCVF:

Maintain/enhance rare fern locations - maintain existing canopy cover and ground layer conditions. Apply DNR HCV General Landscape Guidance. Silvicultural prescriptions in Key Habitat or rare native plant communities maintains or enhances the floristic, structural, and spatial components that define the native plant community; see SRM Objective code CON1. Field verify natural origin pine stands. Develop plan to address HCVF objectives with aspen covertime management in portions of this site.

Management direction from the following sources was considered in developing the above recommendations:

North Four SFRMP

Are the HCVs within this HCVF likely to benefit from coordination with adjacent landowner(s)?

Yes

This HCVF was flagged by the Regional HCVF Team as warranting cross-ownership coordination efforts. The specific HCVs likely to benefit from such coordination with adjacent landowners are identified below.

Aitkin County

General Comments

No information entered.

Reference to rare plants and animals, Minnesota Biological Survey Sites of Biological Significance and mapped native plant communities are records maintained in the Minnesota DNR's Natural Heritage Information System (NHIS). A date of information is associated with each record. The NHIS is continually updated as new information becomes available. The lack of data listed for any geographic area should not be construed to mean that no significant features are present.

... Report End ...