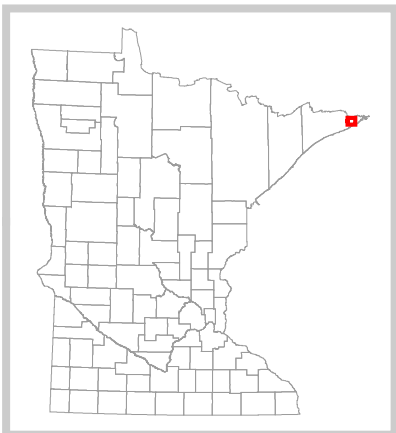
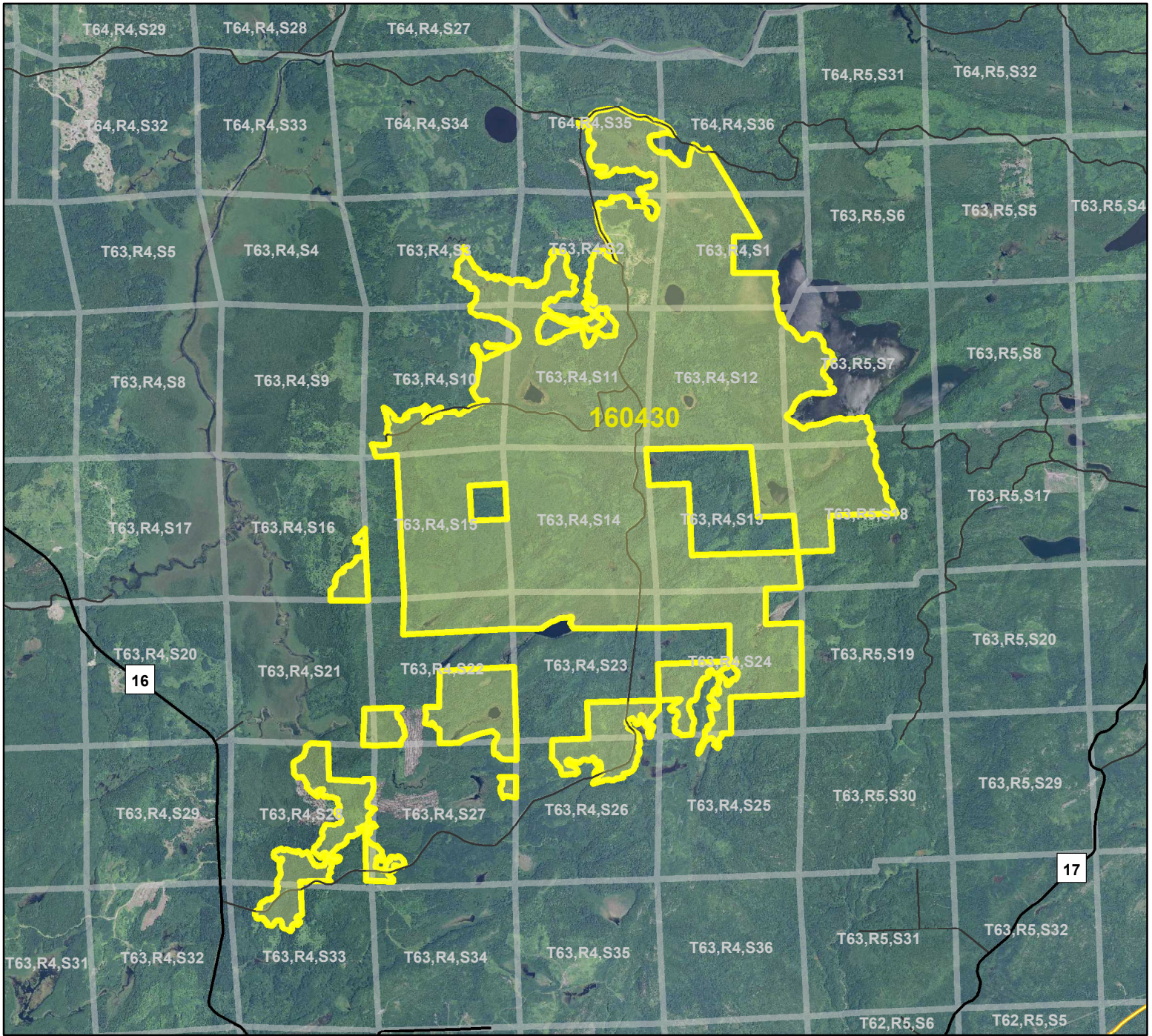


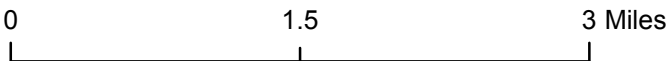
HCVF Site 160430

Swamp Lake - Andy Lake Hardwoods, Cook County



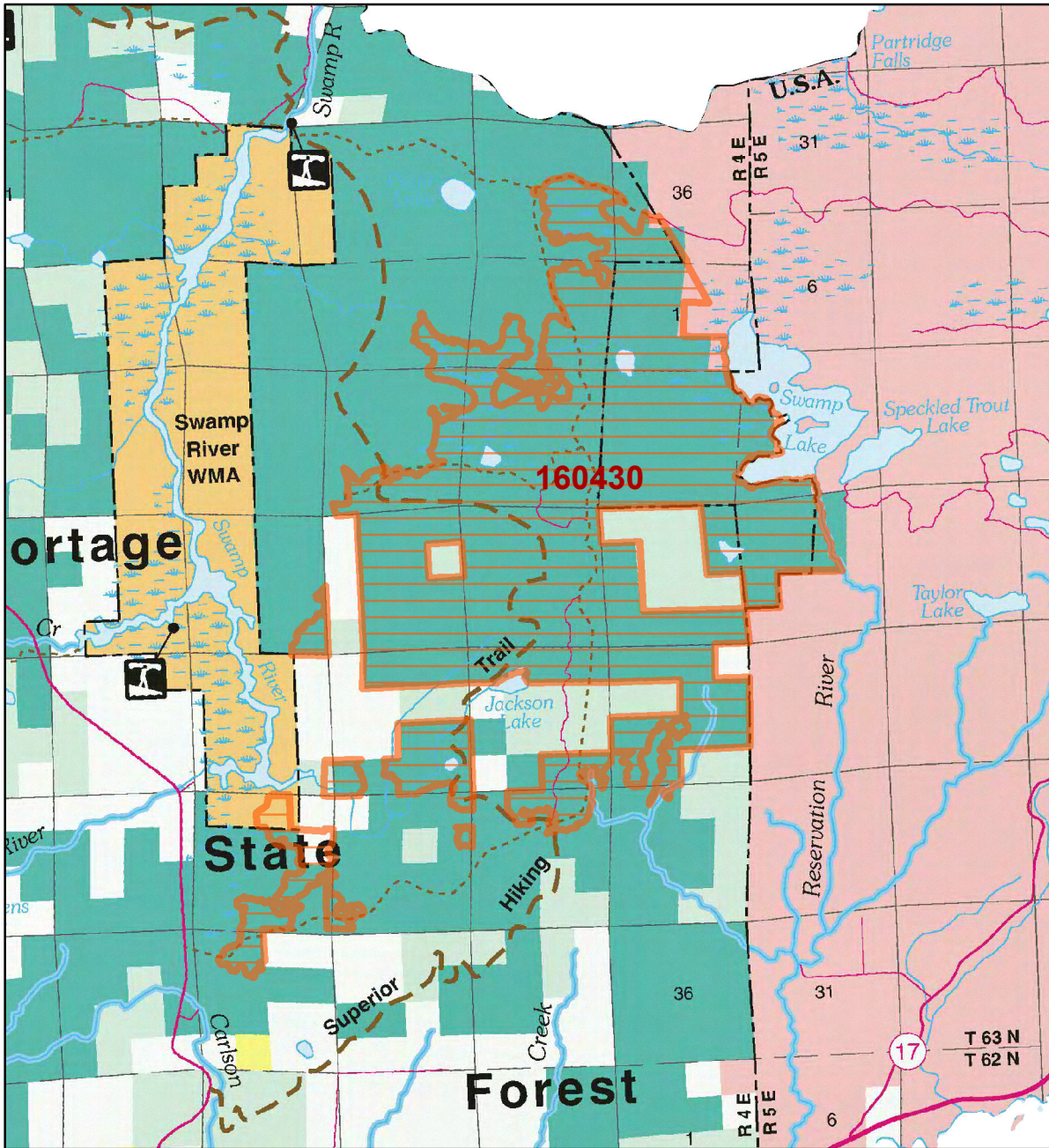
Legend

- State Trunk Highways
- County Highways
- Municipal, Township or Other Roads
- HCVF Site
- PLS Sections



HCVF Site 160430

Swamp Lake - Andy Lake Hardwoods, Cook County



LEGEND

MAP EXPLANATION

LAND OWNERSHIP

- County Land
- Recreation Area under 40 acres
- State Forest Land
- State Park and Recreation Land
- State Wildlife Management Area Land
 - W.M.A.'s under 40 acres
- State Scientific & Natural Area Land
 - S.N.A.'s under 40 acres
- National Waterfowl Production Area
 - N.W.P.A.'s under 40 acres
- National Forest, Park, Wildlife Refuge & Recreation Land
- Bureau of Indian Affairs Land

BOUNDARIES

- County Unit Boundary
- State Unit Boundary
- National Unit Boundary

TRAILS AND FOREST ROADS

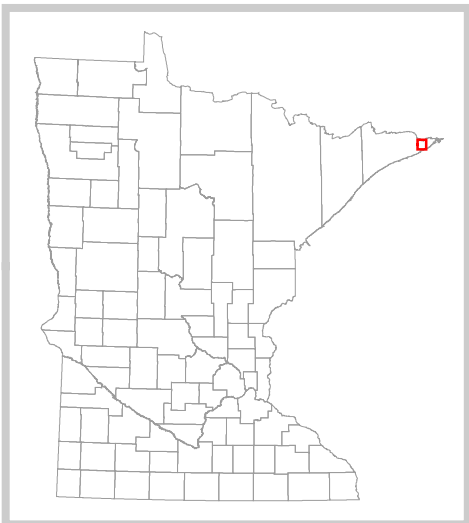
- State Trail
- State Forest Road

DESIGNATED WATERWAYS

- State Trout Stream
- State Canoe and Boating Route
- State Wild, Scenic & Recreational River (also designated Canoe & Boating Route)
- National Wild, Scenic & Recreational River (also designated Canoe & Boating Route)

FACILITIES

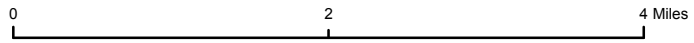
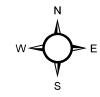
- D.N.R. Office
- Travel Information Center
- Rest Area (with facilities)
- Rest Area (limited facilities)
- Campground
- Watercraft Camping
- Equestrian Camping
- Water Access
- Carry-in Access
- Dam (on designated canoe route)
- Fishing Pier
- Overlook
- Parking
- Historic Site
- Geologic Feature
- Fish Hatchery
- Forestry Nursery
- National Great River Road
- State Great River Road



The PRIM series was developed using funds provided through the Legislative Commission on Minnesota Resources (LCMR).

Base information was compiled from 1:100,000 series U.S. Geologic Survey planimetric maps.

Facility and ownership information was compiled from the following sources: Minnesota Department of Natural Resources, Minnesota Department of Transportation, State Planning Agency, Minnesota Historical Society and the respective counties.



Land ownership categories on this map are in some cases outdated. HCVF sites are on DNR-managed land only; DNR HCVF sites have not been identified on other ownerships.



NOTE: Some of the features defined in this map explanation may not occur on the map.

HCVF Informational Report

Report Run: September 3, 2013

General Information

HCVF #: 160430

HCVF Name: Swamp Lake - Andy Lake Hardwoods

Acres of HCVF site: 5390.02

County: Cook

Data edited by: NE HCVF Workgroup

Role: NE HCVF Workgroup

Date edited on: 2013-07-26

Corresponding Land Administrator(s): DNR Forestry

Management Unit Name(s) (if applicable): Grand Portage State Forest

HCVF Summary

Large, remote, HCVF site within two MBS Sites totaling 7,200 acres. Site comprised of undeveloped, minimally fragmented, primary and secondary forest on steep, scoured bedrock terrain of the Swamp River and Tettegouche Till Plains, 4-7 miles from Lake Superior. Site encompasses a functioning landscape with the full range of ecological conditions, and native plant community complexes typical of the Land type Associations (LTA), largely undisturbed by human activities. Large contiguous patches of high-quality, mature, and old growth mesic hardwood forests of sugar maple, yellow birch, cedar, and paper birch, with abundant high order streams, and wet hollows with black ash, cedar, white pine, and white spruce. High-quality, mesic, old growth forest situated on the crests and southern aspects. Mature mesic mixed forest, including old-growth upland cedar, and remnant white and red pine forest dominate the northern aspects, rocky ridge crests and knobs, and lower slopes. Rich swamp forests of old-growth northern white cedar, and black spruce embedded in the hardwood patches in shallow drains and basins, and are part of a 300+ acre wetland complex surrounding Andy Lake. A 700+ acre open and forested wetland complex stretches from the west shore of Swamp Lake to the Jackson Lake Rd. Documented by bird survey as important habitat for black-throated blue warblers, SGCNs, and other forest birds; red-shouldered hawk (documented 2003, extended MN range by 170 miles). Potential for rare plant species records with additional survey work in spring and mid-summer. Potential for spotted salamanders with additional survey work in seasonal wetlands. Includes small, shallow, undeveloped Jackson Lake, four small lakes/ponds, and 2+ miles of undeveloped Swamp Lake west shoreline. Mix of federal, state, and private ownership; among the largest blocks of State land in the ESC Section. Road access limited to seasonal forest roads (Jackson Lake and Andy Lake Rds.). HCVF site within a complex of three adjoining MBS Sites of Outstanding Biodiversity Significance which together total nearly 12,000 acres. Some recent small aspen regen harvest, and two conifer plantations. Segment of SHT. Memorial and plane crash site. Development proposed for private land south of Jackson Lake.

HCVs known to be present that factored into HCVF designation.

FSC expects DNR to maintain HCVs within designated HCVFs. Because HCVF boundaries are not the same as the larger, multi-ownership MBS Sites, this list will differ from the values identified during the MBS Survey.

HCV1b (S1 or S2 species): 1 fern. HCV1g (Outstanding Key Habitats Examples): Forest - Lowland Coniferous, Forest - Upland Coniferous. HCV2-LMFa (Large habitat block): upland with wetland forest complex. HCV2-LMFbi (late-successional forest block): potential exists. HCV2-LMFbii (blocks with rare species): yes. HCV3a (G1 or G2 plant community): MHn45b. HCV3b (S1 or S2 plant community): MHn45b. HCV3c (Special S3 plant community): FDn43c, FPn62a, MHn45c. HCV3d (Natural origin pine stand): 14 acres red pine; pine also occurs as a significant component within natural origin non-pine stands. HCV3e (Old-growth forest): 730 acres combined NH and cedar. HCV3f (Primary forest): yes.

Management Considerations

Overall management objectives for the entire HCVF:

Maintain/enhance rare plant locations - maintain existing canopy cover and ground layer conditions. Maintain/enhance >500 acre blocks around designated OG (OFMCs) or as part of SFRMP old, large patches or around forested areas with rare species. For MHn45b occurrences follow direction per DNR G1 & G2 Imperiled Communities Memo, June 30, 2010. Silvicultural treatments in Key Habitat & S3 native plant communities maintains or enhances the floristic, structural, and spatial components that define the native plant community; see SRM Objective code CON1. Field verify potential primary forest occurrences. Maintain/enhance existing natural origin pine as a component within the forest matrix, enhance natural origin pine regeneration. Apply DNR HCV General Landscape Guidance.

Management direction from the following sources was considered in developing the above recommendations:

NTL and Border Lakes SFRMP.

Are the HCVs within this HCVF likely to benefit from coordination with adjacent landowner(s)?

Yes

This HCVF was flagged by the Regional HCVF Team as warranting cross-ownership coordination efforts. The specific HCVs likely to benefit from such coordination with adjacent landowners are identified below.

USFS; Grand Portage Band; small amount of private; majority is DNR.

General Comments

No information entered.

Reference to rare plants and animals, Minnesota Biological Survey Sites of Biological Significance and mapped native plant communities are records maintained in the Minnesota DNR's Natural Heritage Information System (NHIS). A date of information is associated with each record. The NHIS is continually updated as new information becomes available. The lack of data listed for any geographic area should not be construed to mean that no significant features are present.

... Report End ...