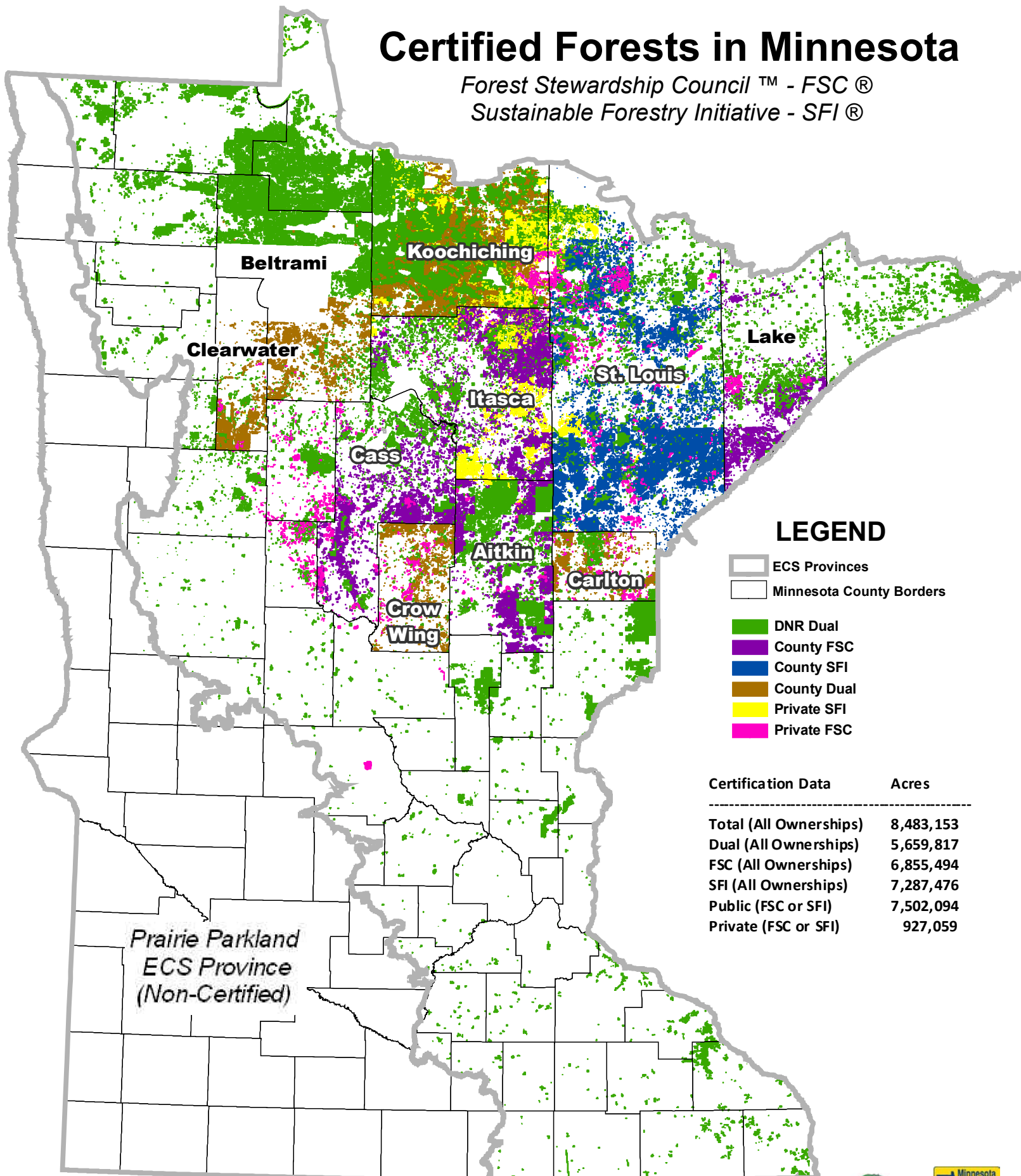


Certified Forests in Minnesota

Forest Stewardship Council™ - FSC®

Sustainable Forestry Initiative - SFI®



LEGEND

- ECS Provinces
- Minnesota County Borders
- DNR Dual
- County FSC
- County SFI
- County Dual
- Private SFI
- Private FSC

Certification Data	Acres
Total (All Ownerships)	8,483,153
Dual (All Ownerships)	5,659,817
FSC (All Ownerships)	6,855,494
SFI (All Ownerships)	7,287,476
Public (FSC or SFI)	7,502,094
Private (FSC or SFI)	927,059

Prairie Parkland
ECS Province
(Non-Certified)

225,069 acres certified under the American Tree Farm System are not shown due to concerns regarding privacy rights.

Date: April 1, 2012
Contact: Rebecca Barnard, MnDNR Forestry
651-259-5256
www.dnr.state.mn.us/forestry/certification/index.html



Forest Management Certificates in Minnesota

Total Certified Acres

Total (<i>All ownerships</i>)	8,483,153 acres
Public (<i>FSC or SFI</i>)	7,502,094 acres
Private (<i>FSC/SFI/PEFC</i>) ¹	927,059 acres
Dual (<i>All ownerships</i>)	5,659,817 acres

FSC Certified Acres

All Ownerships	6,855,494 acres
Public: Minnesota DNR ²	4,960,177 acres ³
Public: County	1,627,667 acres
Private: Industry	252,217 acres
Private: Non-Industry	15,433 acres

SFI/PEFC Certified Acres

All Ownerships	7,287,476 acres
Public: Minnesota DNR ²	4,979,253 acres ³
Public: County	1,594,814 acres
Private: Industry	488,340 acres
Private: Non-Industry	215,976 acres

FSC Certificates

Public

Minnesota DNR ²	4,960,177 acres ³
MCSFC ⁴	699,640 acres
Aitkin County Land Dept.	221,657 acres
Cass County Land Dept.	253,494 acres
Lake County Land Dept.	151,216 acres
Itasca County	301,660 acres

Private

Aitkin County SWCD	2,689 acres
C. Forestry Resource Center	2,400 acres
Potlatch Forest Holdings	252,217 acres
St. John's Abbey	1,484 acres
The Nature Conservancy (TNC)	8,860 acres

SFI/PEFC Certificates

Public

Minnesota DNR	4,979,253 acres ³
MCSFC ⁴	699,640 acres
St. Louis County Land Dept.	895,174 acres

Private

Forest Capital Partners	298,955 acres
UPM-Kymmene	189,385 acres
MN Tree Farmers (<i>PEFC</i>) ⁵	225,069 acres

Dual (FSC & SFI) Certificates

Minnesota DNR (<i>2005-present</i>)	4,960,177 acres ³
MCSFC ⁵ (<i>2009-present</i>)	699,640 acres
Beltrami County	147,000 acres
Carlton County	73,000 acres
Clearwater County	90,140 acres
Crow Wing County	103,000 acres
Koochiching County	286,500 acres

¹ Forest Stewardship Council (FSC); Sustainable Forestry Initiative (SFI); Programme for the Endorsement of Forest Certification schemes (PEFC)

² Minnesota DNR's FSC Trademark License Code: FSC-C020394. Minnesota DNR's FSC Certificate Code: SCS-FM/COC-00088N

³ As of 12/31/10, 81,673 acres of USFWS-owned Land Utilization Project (LUP) lands managed by DNR are dual Certified. 19,076 acres of agricultural leases and cooperative forestry agreements are SFI Certified only, thus accounting for the difference between DNR's certificates.

⁴ The Minnesota Counties Sustainable Forest Cooperative (MCSFC) is a group certificate including the 5 counties listed above. MCSFC was awarded its SFI certificate in 2008 and its FSC certificate on November 1, 2009.

⁵ The American Tree Farm System (ATFS) was awarded PEFC recognition on August 7, 2008. There are 1,606 Certified Tree Farmers in MN with a total of 225,069 acres. Due to privacy rights, there is no geo-spatial data available for this acreage. ATFS fiber is recognized by and tracked through the SFI Chain-of-Custody system. Please contact Tom Witkowski @ tomforester@charter.net for more info.