

Leech Lake

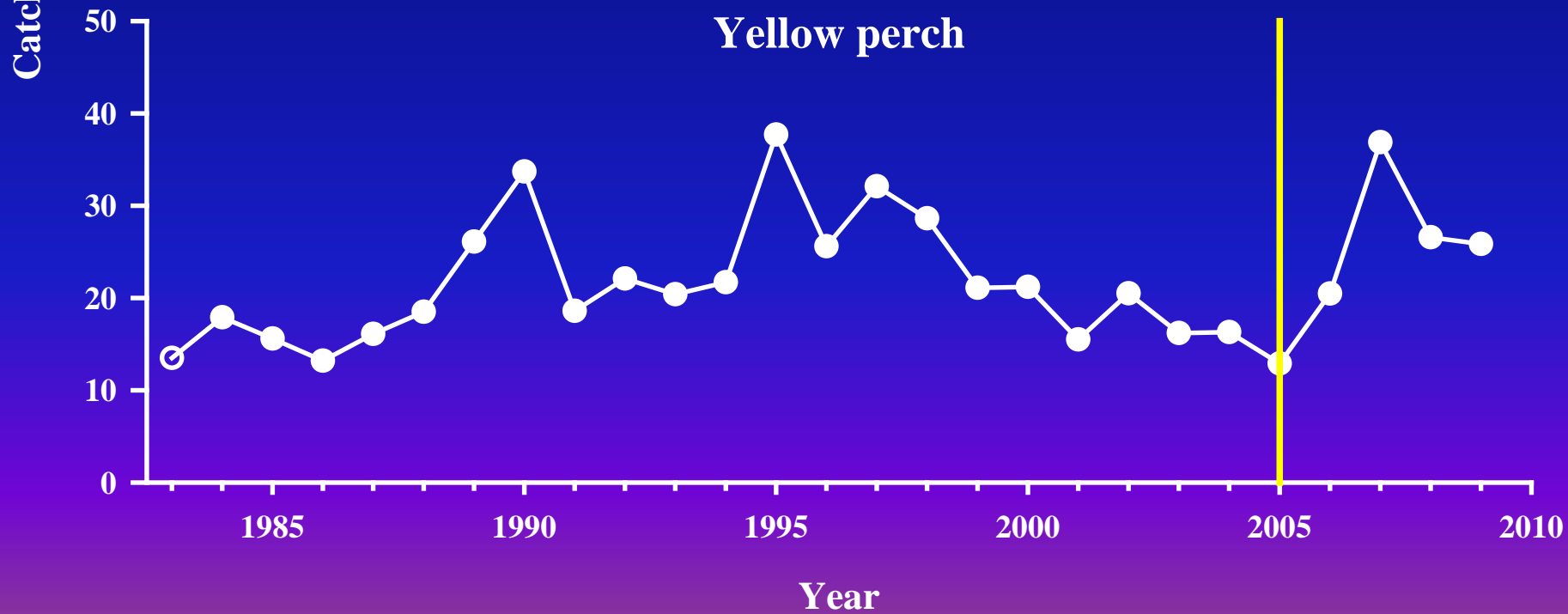
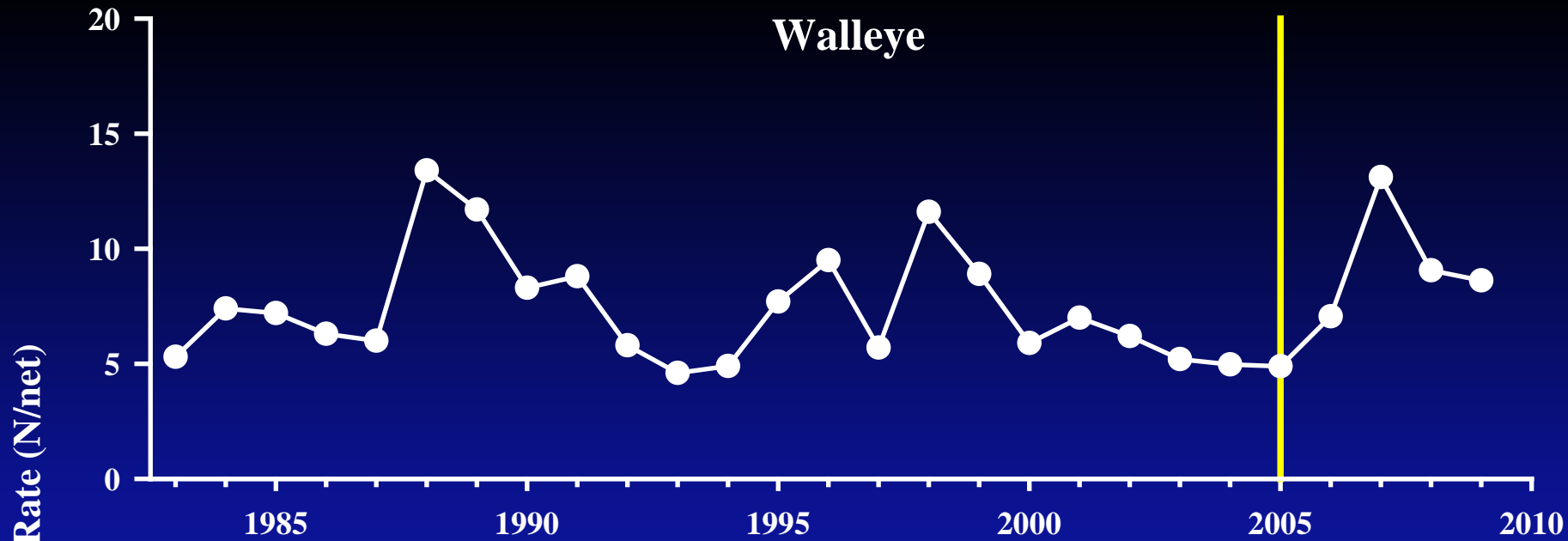
- Update 2005-2010 Plan
Make Recommendations to
Commissioner

Why Now?

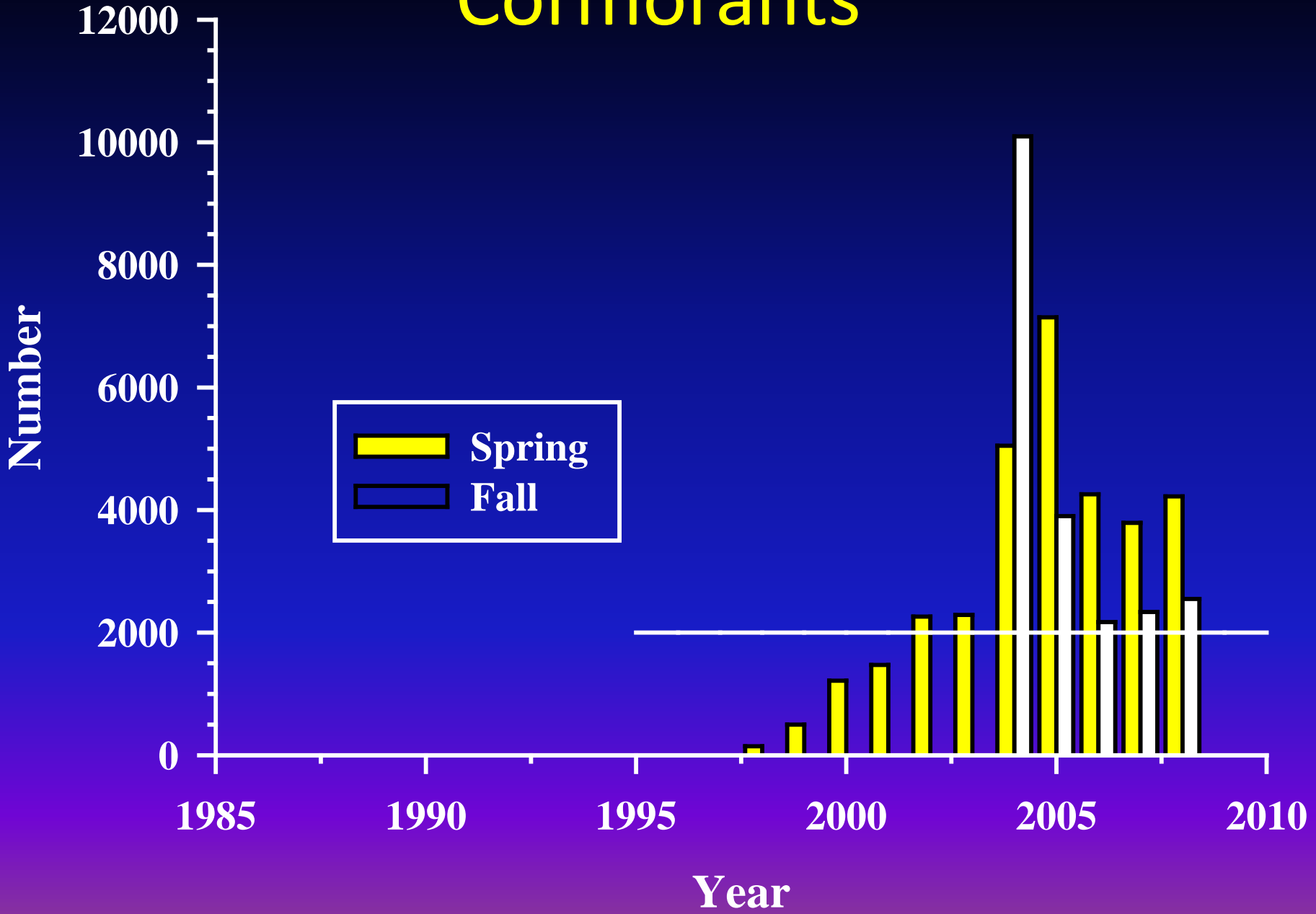
- 2005-2010 plan will expire
- Special Regulation Review
 - not mandatory
- Legislative interest
- Outreach

2005-2010 Plan “driver”

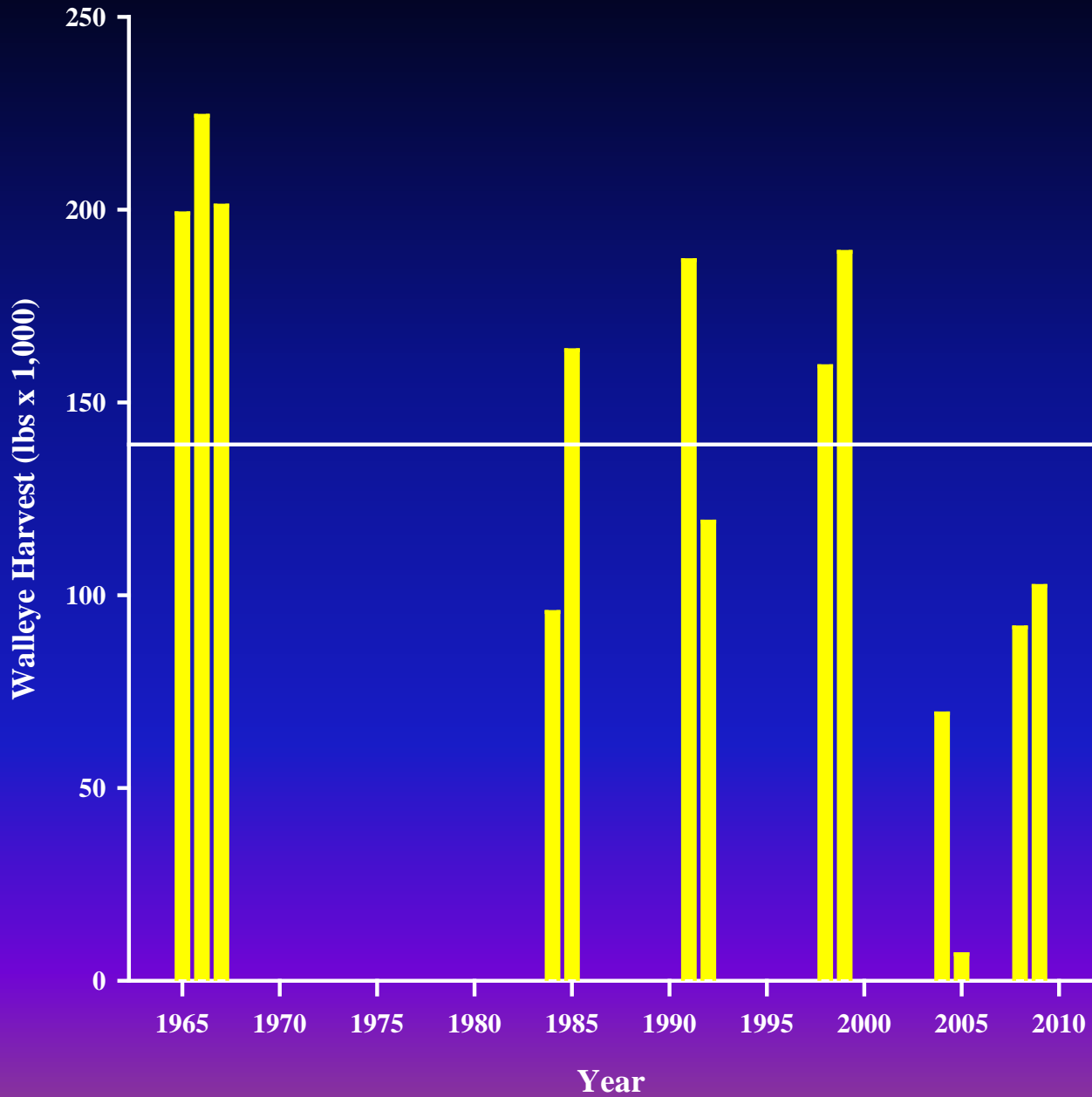
- Poor recruitment of walleye
- Decline in walleye & yellow perch populations
- Unprecedented buildup of cormorants
- Poor fishing



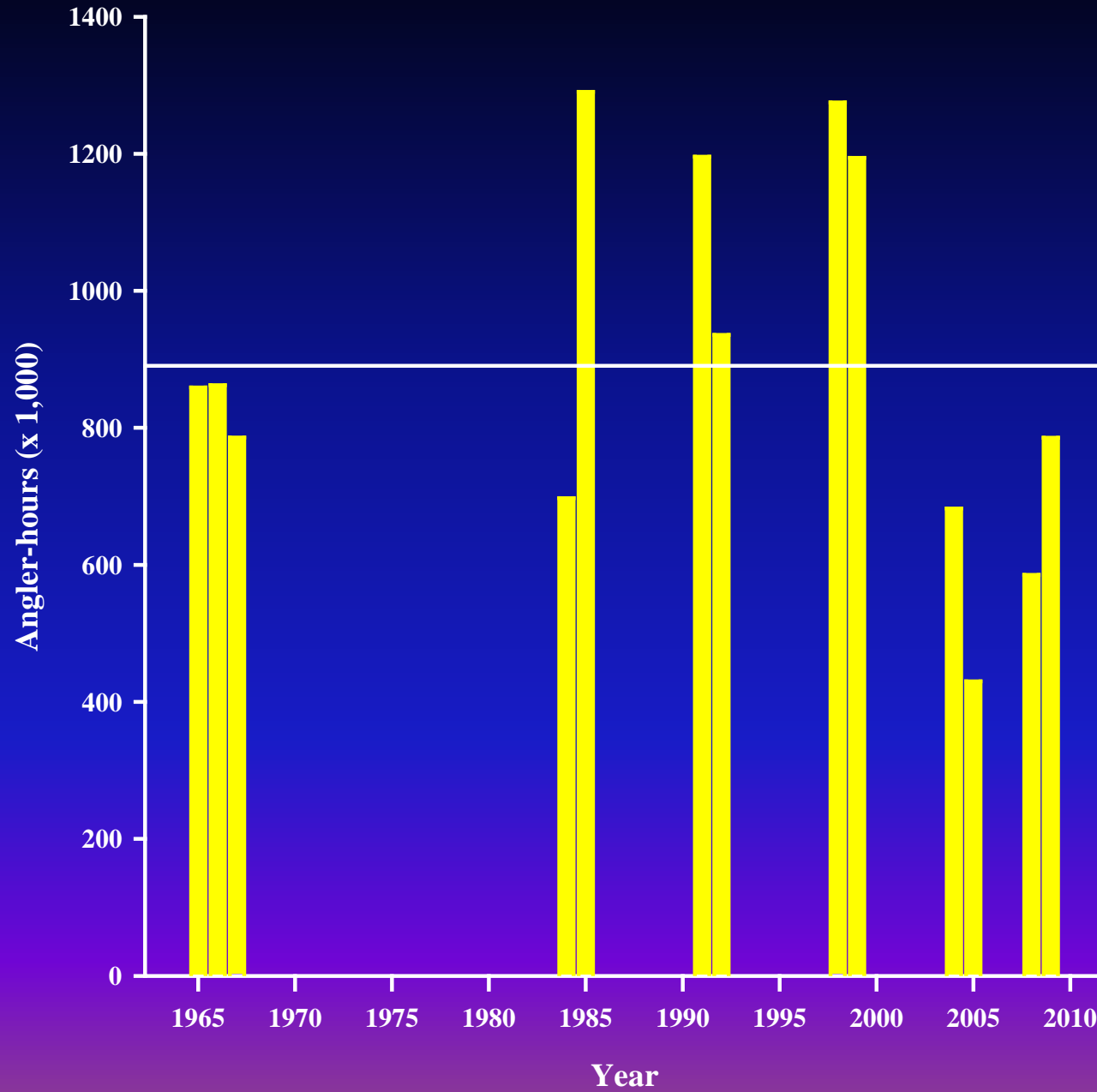
Cormorants



Total Walleye Harvest (lbs. x 1,000) in Leech Lake, 1965-2008



Total Angler-Hours in Leech Lake Fishery, 1965-2008



2005-2010 Plan Summary

- **Special Regulation WAE**
 - 18-26" PSL Bag 4
- **Cormorant Control**
 - 500 nesting pair
- **Habitat**
 - Acquisition
 - Exotics
 - Sensitive Shorelines
 - Vegetation survey
- **Walleye Stocking**
 - 5 M for 3 years, OTC marked . Didn't follow plan

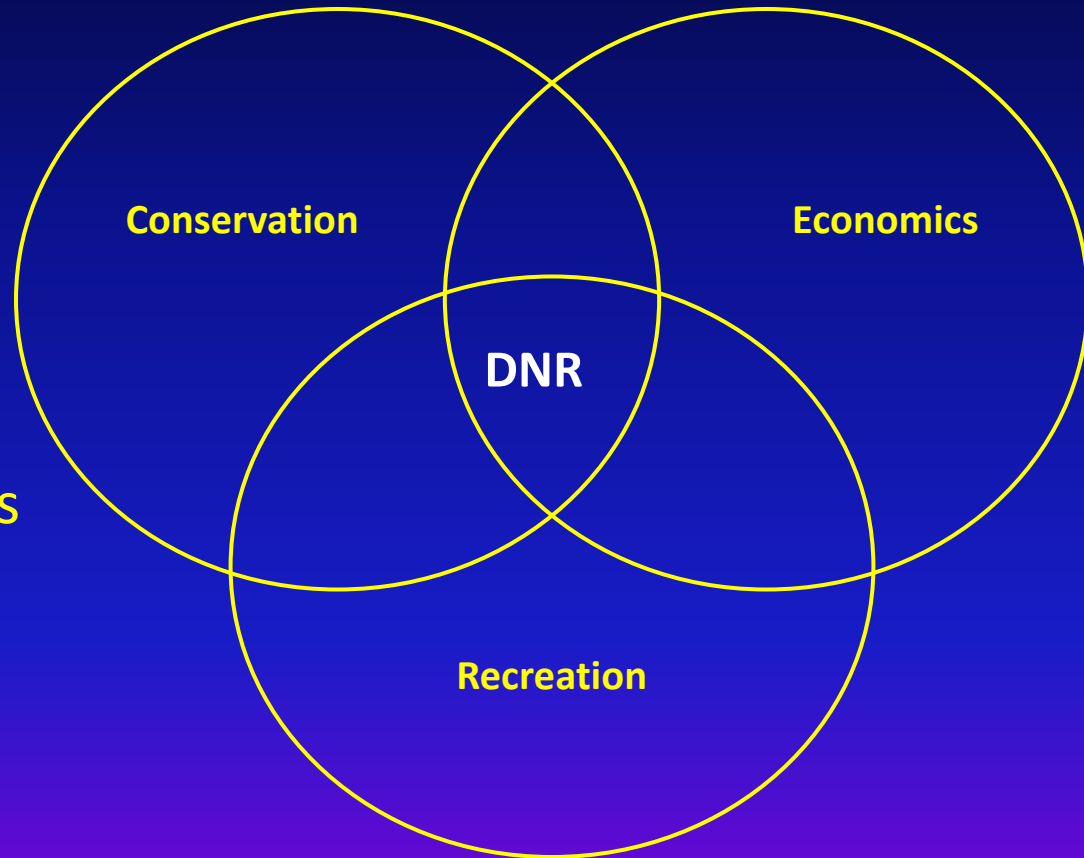
Update Process

- Spring 2009
 - Internal discussions, planning
 - Outreach to LLFTF and legislators
- Diverse committee- Statewide resource
 - Initially not well received
 - Red, Lake Superior, Vermilion

DNR Mission

Work with citizens to...

- Conserve and manage the state's natural resources
- Provide outdoor recreation opportunities
- Provide for commercial uses of natural resources
- In a way that creates a sustainable quality of life



Committee- 17 members

- Leech Lake Fishing Task Force
- Leech Lake Association
- Leech Lake Watershed Foundation
- Izaak Walton- Statewide
- Anglers for Habitat
- Leech Lake Band of Ojibwe

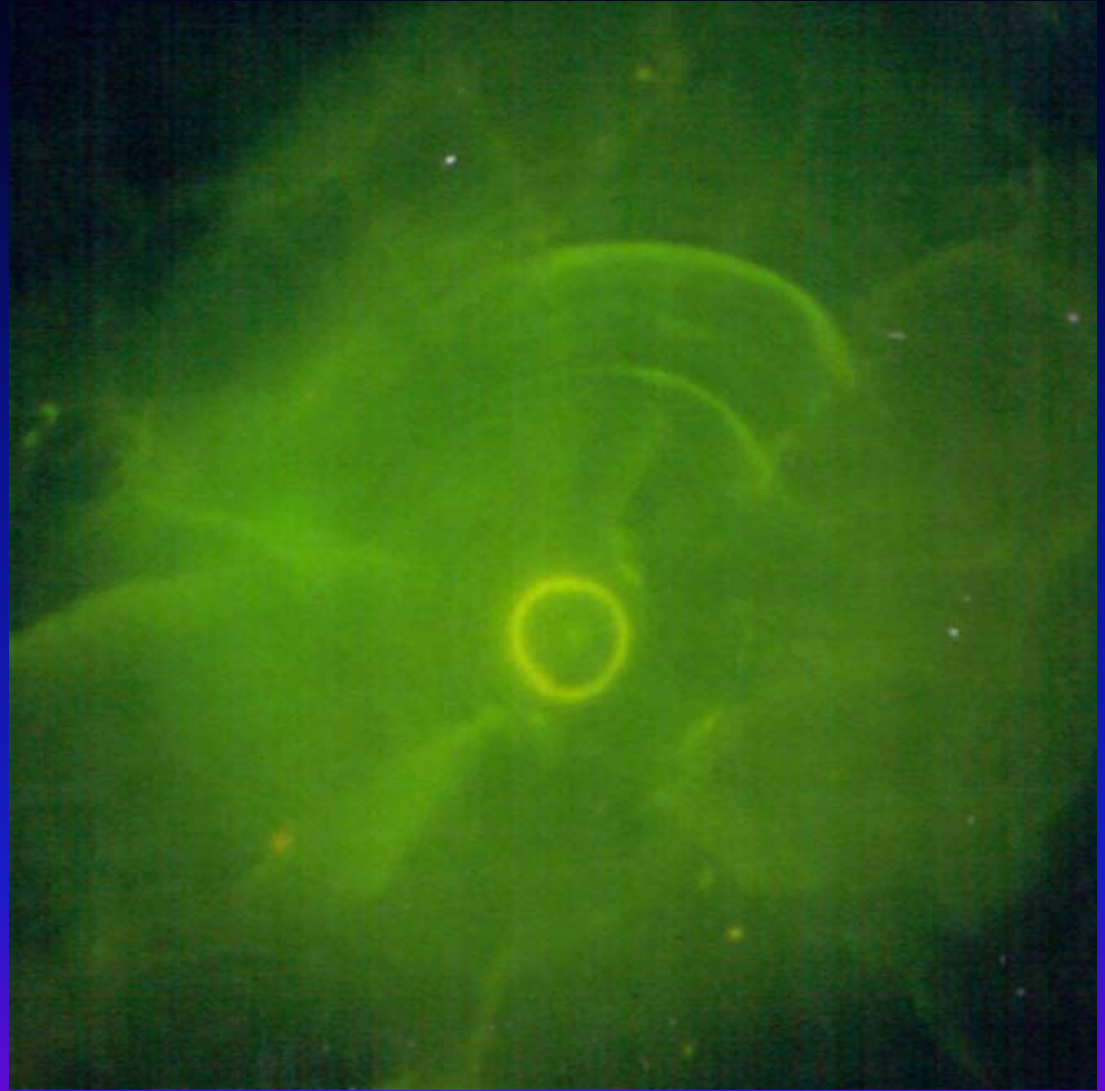
Committee (cont.)

- Retired Fish Biologists- California, Illinois
- Citizen Oversight Committee
- Guides
- Walleye Advisory Committee
- NASA Scientist
- Red Lake Plan
- Business, Resort(s)

Meetings since August

- Look at data- Large lake info and creels
- Red Lake Presentation- Gary Barnard
- Genetics- U of M Dr. Loren Miller
- Habitat
 - Sensitive shoreline Paul Radomski
 - Exotics Darrin Hoverson
 - Committee Groups
- OTC Stocking Study- Dale Logesdon

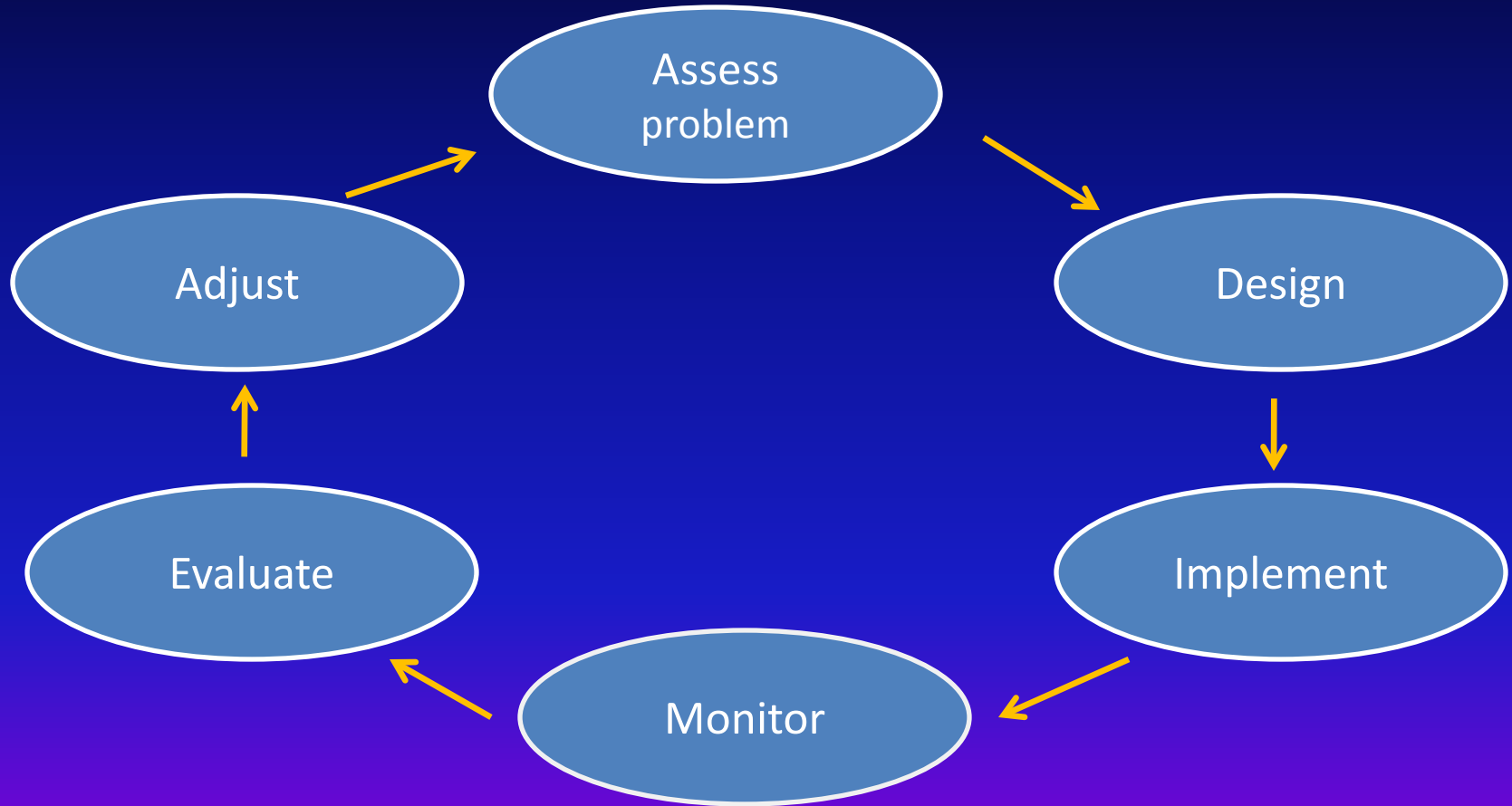
OTC Marked Otolith



Meetings (cont)

- Cormorants
 - Biology, background, diet study - Steve Mortensen
 - Model - Doug Schultz, Steve Mortensen, Andy Carlson
- Large Lake (Leech) data - Dr. Charles Anderson
- Local Economics - Brad Walhof , John Dainsburg
- Adaptive Resource Management

Adaptive Management Process



Adaptive Resource Management

Set-Up Phase

(Periodically – Every 5 Years)

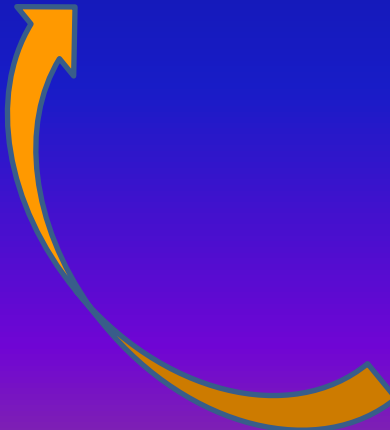
1. Stakeholder Commitment
2. Objectives
3. Management Actions
4. Models
5. Monitoring Plans



Iterative Phase

(Annually)

6. Decision Making → 7. Follow-up Monitoring
8. Assessment
-
- A cycle of three blue arrows connecting steps 6, 7, and 8 in the Iterative Phase. An arrow points from 6 to 7, from 7 to 8, and from 8 back to 6.

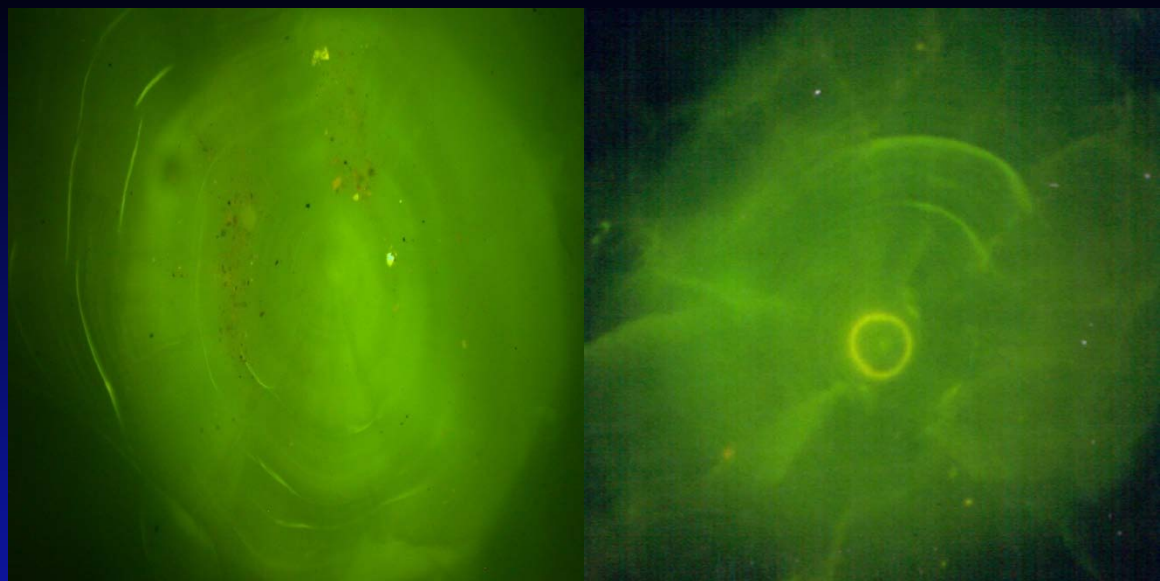


More Meetings!

- 3-4 more meetings scheduled Jan-Feb
- More dialog /discussion
- Actually make recommendations!
- Have plan done for Commissioner in March
- Open for broader public comment- DNR web site

<http://www.dnr.state.mn.us/fisheries/management/llfmp.html>

Results of Walleye Stocking



Year	Stocked (M)	% Marked	Hatch Rate (%)	Wild/LA	Total/LA
2005	7.5	39	0.22	203	334
2006	22	86	0.12	61	440
2007	7.5	23	0.54	432	561
2008	22	55	0.31	317	699
2009	22.5	50	0.60	385	775