



2010-2011 FATAL SNOWMOBILE ACCIDENTS

Updated as of May 5, 2011

Number of snowmobile fatalities

13

4/10/11 – Beltrami County

59-year-old male drowned when the snowmobile he was operating went into open water between the lower and upper Red Lake. His body was recovered on 4/11/11, and he was not wearing a PFD.

Type of Terrain – Lake or Stream
Snowmobile Certificate - no

Type of Fatality – Broke through ice
Alcohol involved – pending results of testing

3/19/11 – 10:00 p.m. – Lake County

41-year-old male died from injuries after hitting a ridge on the Yukon Trail, was thrown from the snowmobile he was operating, causing him to hit a rock.

Type of Terrain – Private Marked Trail
Snowmobile Certificate - no

Type of Fatality – Struck a Fixed Object
Alcohol involved – BAC .235

3/5/11 – 9:50 p.m. – Isanti County

50-year-old male died when the snowmobile he was operating went off a trail and struck a tree.

Type of Terrain – Government Marked Trail
Snowmobile Certificate - no

Type of Fatality – Struck a Fixed Object
Alcohol involved – BAC .267

3/3/11 – 1:30 a.m. – Anoka County

25-year-old male died when the snowmobile he was operating struck a tree off a road next to the lake. His female passenger was hospitalized. Operator was not wearing a helmet.

Type of Terrain – Road Right of Way
Snowmobile Certificate - yes

Type of Fatality – Struck a Fixed Object
Alcohol involved – BAC .183

2/26/11 – 2:17 p.m. – Cook County

41-year-old male died on 3/9/11 after sustaining injuries when the snowmobile he was operating left a snowmobile trail near the Norwester Lodge and struck a tree. His 50-year-old passenger was hospitalized.

Type of Terrain - Outside City or Village Limits
Snowmobile Certificate - no

Type of Fatality – Struck a Fixed Object
Alcohol involved – no

1/30/11 – 2:22 p.m. – Sherburne County

13-year-old male died after suffering injuries when he lost control of the snowmobile he was operating, and hit a group of trees by the Sand Dunes State Forest parking lot.

Type of Terrain – Road Right of Way

Type of Fatality – Struck a Fixed Object

Snowmobile Certificate - yes

Alcohol involved – no

1/29/11 – 6:00 p.m. –Mahnomen County

31-year-old male died when the snowmobile he was operating was hit from behind by another snowmobile on South Twin Lake.

Type of Terrain – Lake or Stream

Type of Fatality – Machine-Machine Collision

Snowmobile Certificate – no

Alcohol involved – no

1/22/11 – 2:45 p.m. – Chisago County

37-year-old male died Sunday, 1/23/11, after suffering injuries when he collided head on with another snowmobile on the Wild River Trail.

Type of Terrain – Government Marked Trail

Type of Fatality – Machine-Machine Collision

Snowmobile Certificate - no

Alcohol involved – no

1/16/11 – 5:00 p.m. – Renville County

23-year-old male died when the snowmobile he was operating struck a drainage ditch.

Type of Terrain – Road Right of Way

Type of Fatality – Struck a Fixed Object

Snowmobile Certificate – yes

Alcohol involved – BAC .325

1/15/11 – 2:32 p.m. – Scott County

49-year-old male died during surgery, after suffering injuries when the snowmobile he was operating hit a snow bank, causing the snowmobile to roll and he was thrown from the machine.

Type of Terrain – Government Marked Trail

Type of Fatality – Machine Rollover

Snowmobile Certificate – No

Alcohol involved – no

12/30/10 – 7:00 p.m. – Hubbard County

18-year-old male died when the snowmobile he and a friend were towing a fish house with, broke into open water.

Type of Terrain – Lake or Stream

Type of Fatality – Broke Through Ice

Snowmobile Certificate – yes

Alcohol involved – BAC .07

12/19/10 – 4:00 p.m. – McLeod County

26-year-old male died when the snowmobile he was operating entered a large drainage ditch, operator was struck from behind by another machine.

Type of Terrain – Road Right of Way

Type of Fatality – Machine-Machine Collision

Snowmobile Certificate – Yes

Alcohol involved – no

11/30/10 – 8:00 p.m. – Isanti County

25-year-old male died when the snowmobile he was operating hit a tree.

Type of Terrain – Road Right of Way

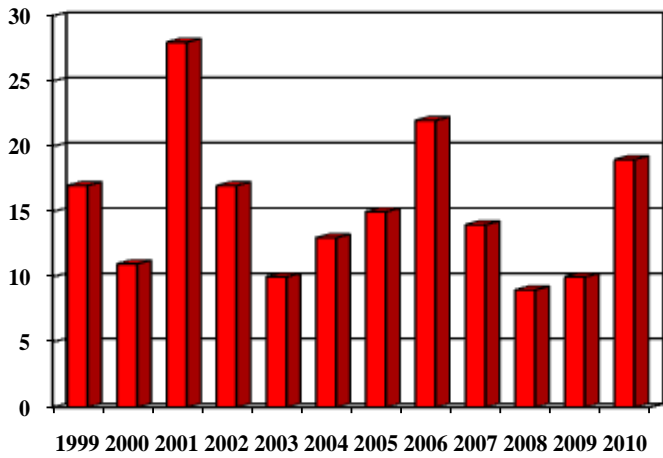
Type of Fatality – Struck a Fixed Object

Snowmobile Certificate – yes

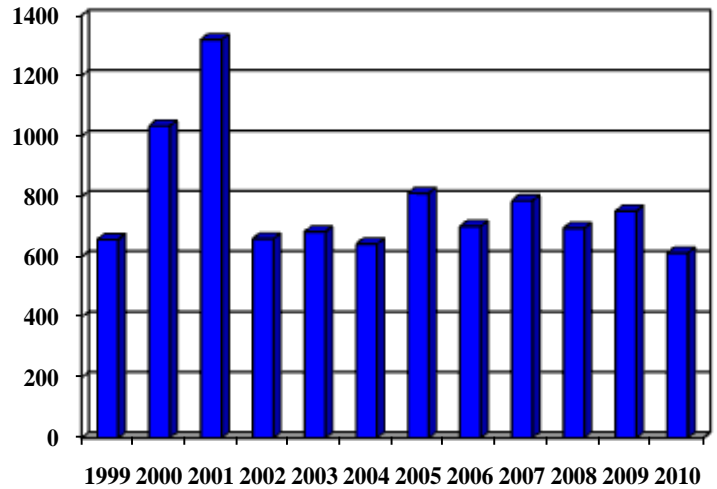
Alcohol involved – no

Number of snowmobile fatalities	13
Number of injuries reported	175
Total number of accidents reported	218
Number of machines damaged	180
Personal Property Damage	39

**Reported Snowmobile Fatal & Non-Fatal Accidents
1999 - 2010**



**MN DNR Multi-Year
Fatal Accidents**



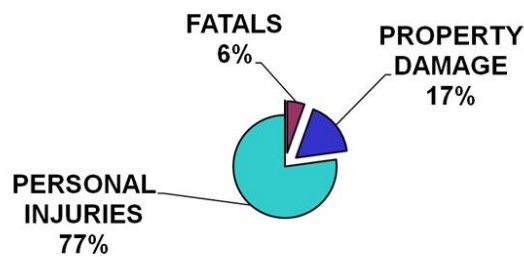
**MN Dept. of Health Multi-Year
Injury Accidents Requiring
Emergency Room Treatment**

MN DNR Enforcement Reported Snowmobile Accident Totals

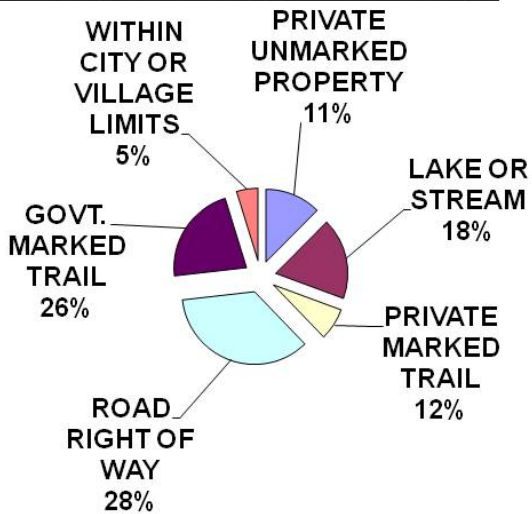
Total Accidents – 218 Fatalities – 13 Personal Injuries – 175 Property Damage - 39

2010-2011 Snowmobile Accident Data Summary

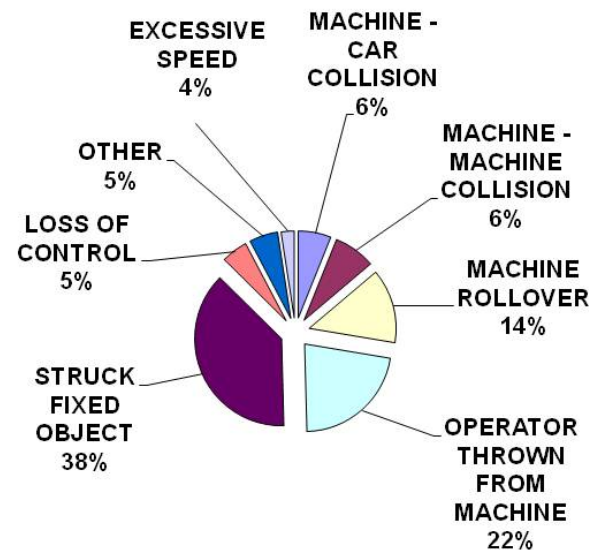
Accident Classifications



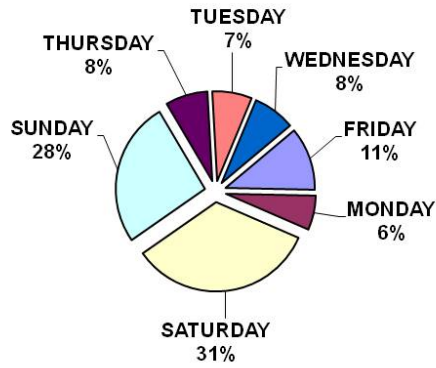
Where Accidents Happen



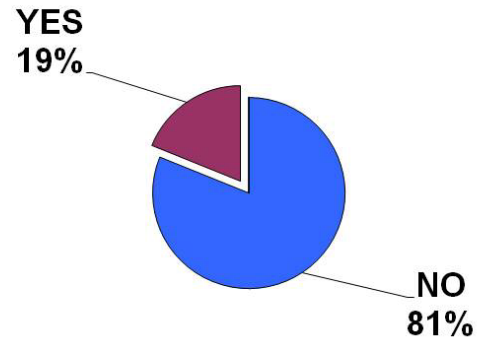
Type of Accidents



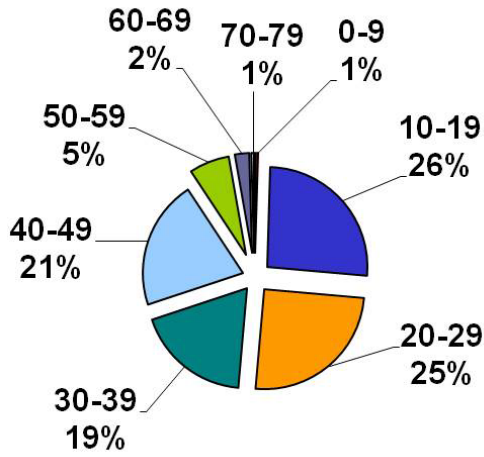
When Accidents Happen



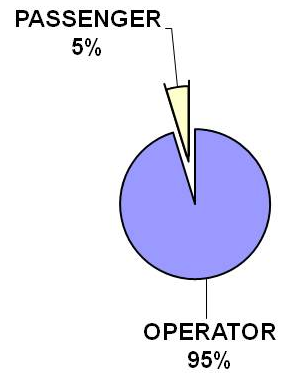
Alcohol Involved in Accidents



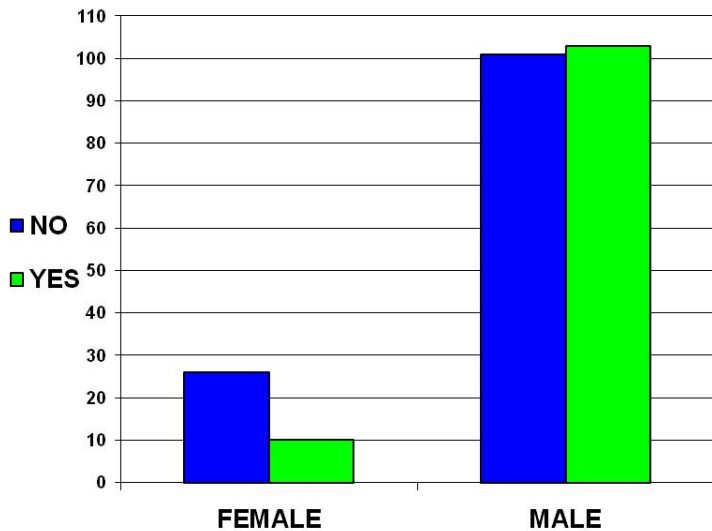
Accidents Grouped by Age



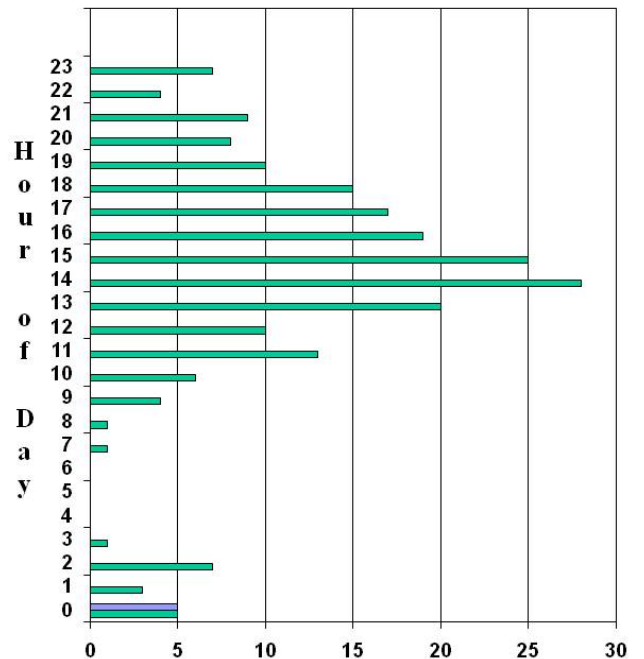
Positions of Persons Involved in Accidents



Safety Training by Gender

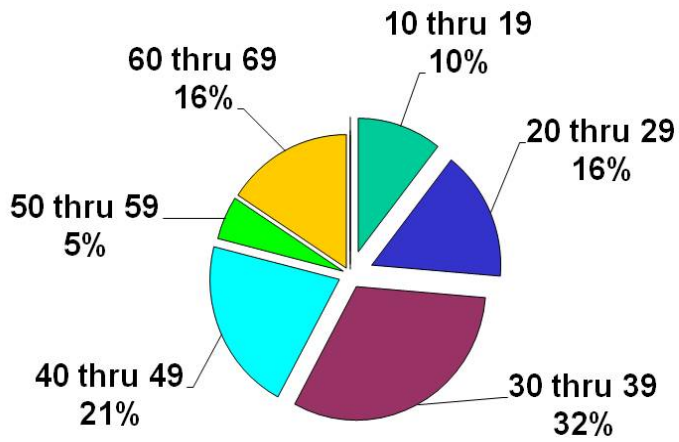


Total # of Accidents by Hour of Day

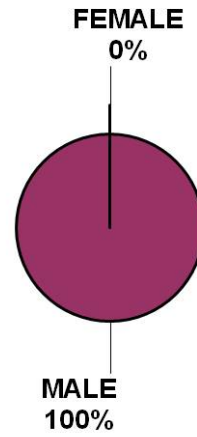


2010-2011 Snowmobile Fatality Data

Fatals Grouped by Age



Fatalities by Gender



Alcohol Involved in Fatal Accidents

