



2007-2008 FATAL SNOWMOBILE ACCIDENTS

Updated as of April 2, 2008

Number of snowmobile fatalities

9

2/24/08, 2:17 p.m. – St. Louis County

25-year-old male died when the snowmobile he was operating collided with a car.

Type of Terrain – Road Right of Way

Snowmobile Certificate – no

Type of Fatality – Machine-Car Collision

Alcohol involved – BAC .035

2/18/08, 1:07 p.m. – Hennepin County

40-year-old female passenger died when the snowmobile she was on collided with a tree.

Type of Terrain – Private Property

Snowmobile Certificate – no

Type of Fatality – Struck Fixed Object

Alcohol involved – no

1/27/08, 1:00 p.m. - St. Louis County

25-year-old female died when the snowmobile she was operating on the Arrowhead Trail struck a tree.

Type of Terrain – Government Marked Trail

Snowmobile Certificate - no

Type of Fatality – Struck a fixed object

Alcohol involved – no

1/25/08, 11:00 p.m. – Crow Wing County

33-year-old male died when the snowmobile he was operating crashed into shoreline trees.

Type of Terrain – Lake or Stream

Snowmobile Certificate – no

Type of Fatality – Struck a fixed object

Alcohol involved – BAC .258

1/19/08, 3:40 p.m. – Hubbard County

51-year-old male died when the snowmobile he was operating struck a tree on a trail in Itasca State Park.

Type of Terrain – Government Marked Trail

Snowmobile Certificate – yes

Type of Fatality – Struck a fixed object

Alcohol involved – no

1/16/08, 6:30 p.m. – Lake of the Woods County

26-year-old male died when the snowmobile he was operating hit a dock. His brother, who was a passenger, was not injured.

Type of Terrain – Lake or Stream

Snowmobile Certificate - yes

Type of Fatality – Struck a fixed object

Alcohol involved – BAC .15

1/11/08, 6:48 p.m. – Carlton County

56-year-old female died when the snowmobile she was operating left the Soo Line Trail into some trees.

Type of Terrain – Government Marked Trail
Snowmobile Certificate - no

Type of Fatality – Struck a fixed object
Alcohol involved – BAC .258

12/23/07, 10:58 p.m. – Winona County

44-year-old male died on 12/29/07 from injuries sustained when the snowmobile he was operating at a high rate of speed hit a tree. The operator was wearing a helmet.

Type of Terrain – Private Unmarked Property
Snowmobile Certificate - no

Type of Fatality – Struck a fixed object
Alcohol involved – BAC .17

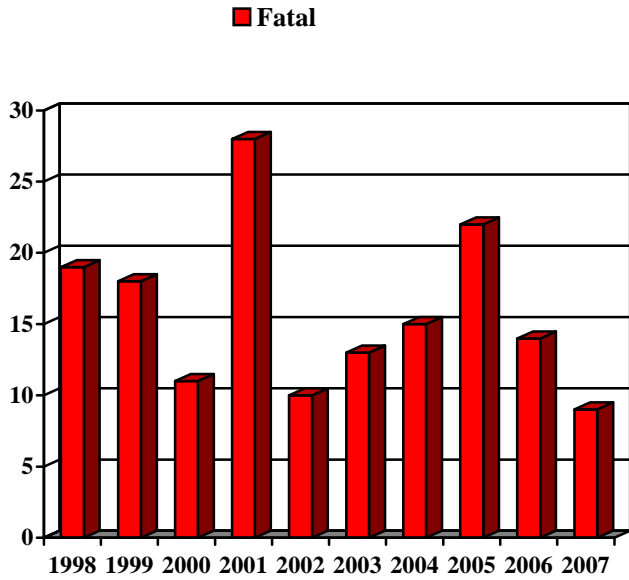
7. 12/14/07, - 10:08 p.m. - Roseau County

19-year-old male died when the snowmobile he was operating collided with a car.

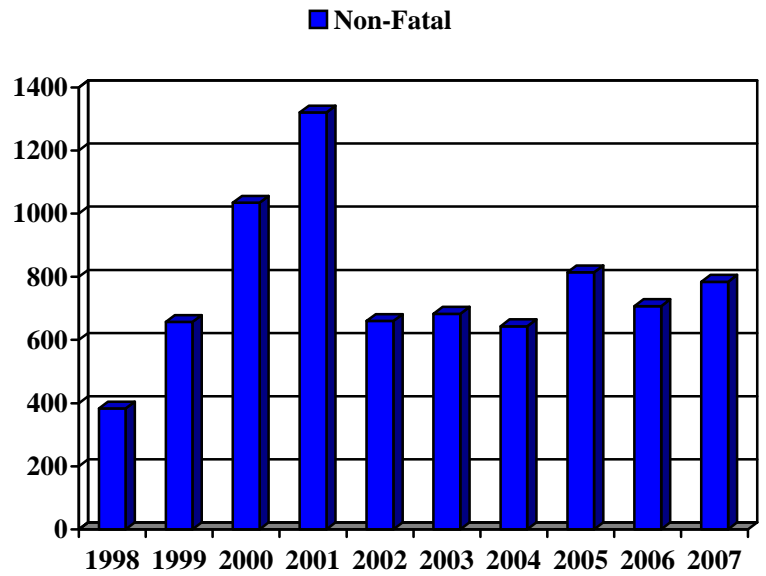
Type of Terrain – Road Right of Way
Snowmobile Certificate - yes

Type of Fatality – Machine-Car Collision
Alcohol involved – pending results of testing

Reported Snowmobile Fatal & Non-Fatal Accidents 1998 - 2007



**MN DNR Multi-Year
Fatal Accidents**



**MN Dept. of Health Multi-Year
Injury Accidents Requiring
Emergency Room Treatment**

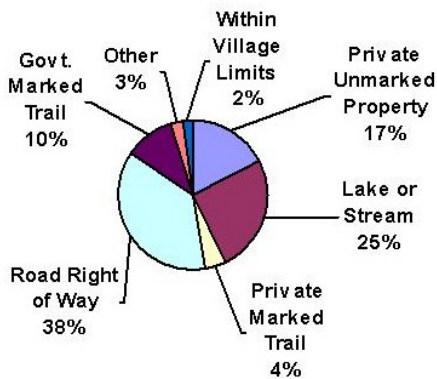
MN DNR Enforcement Reported Snowmobile Accident Totals

Total Accidents – 201 Fatalities – 7 Personal Injuries – 170 Property Damage - 39

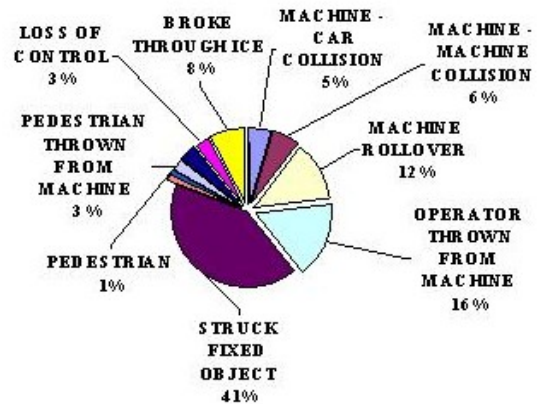
Accident Classifications



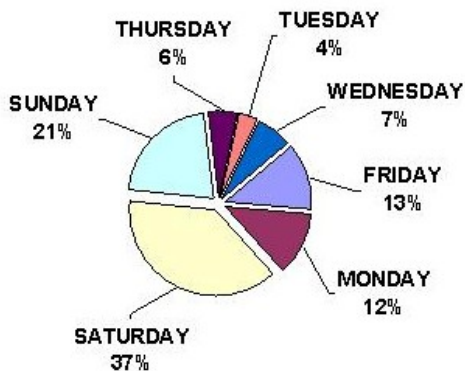
Where Accidents Happen



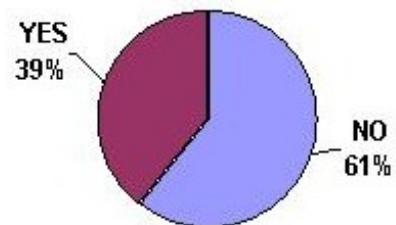
Type of Accidents



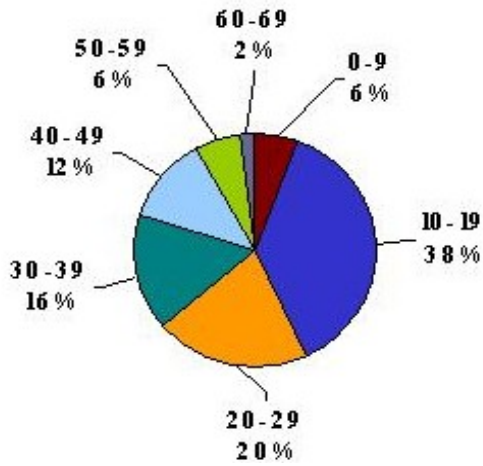
When Accidents Happen



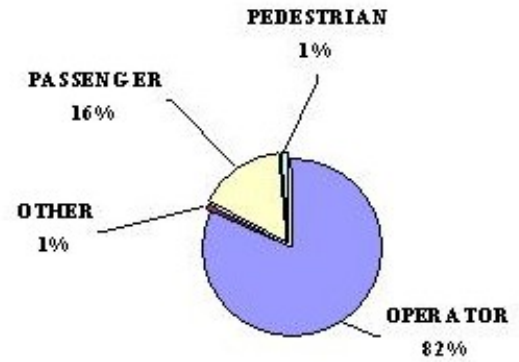
Alcohol Involved in Accidents



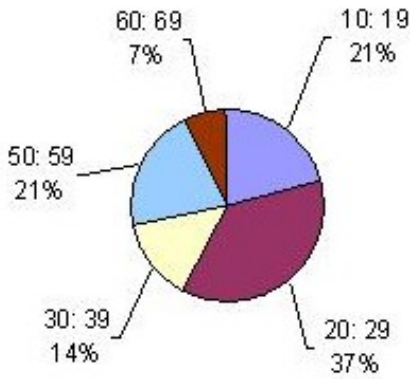
Accidents Grouped by Age & Sex



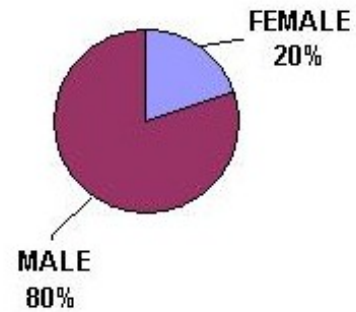
Positions of Persons Involved in Accidents



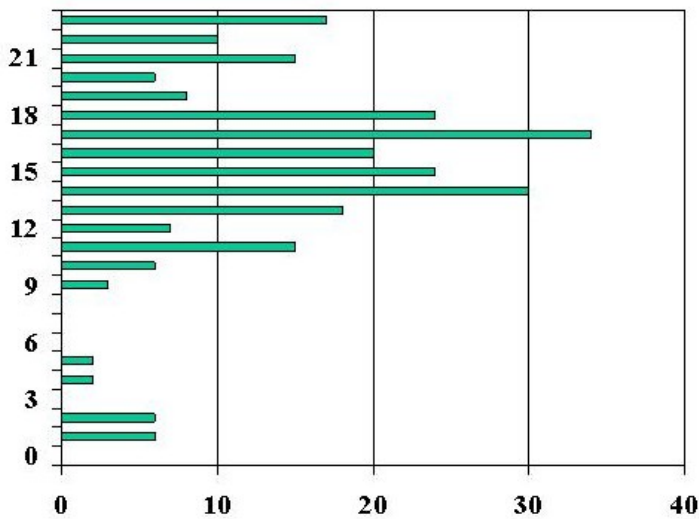
Fatals Grouped by Age Bracket



Fatalities by Gender



Accidents by Hour of the Day



Safety Training by Gender

