



Minnesota Project Learning Tree Educator Update

January 2007

It's a new year!

Bi-monthly e-newsletter for educators who have attended a Project Learning Tree workshop

NEWS

Correlations Database

You already knew that Projects WET, WILD, and Learning Tree are correlated to the Minnesota Academic Standards in language arts, mathematics, science, and social studies. But did you know that the DNR has launched an easy-to-use online database of these correlations? Just click on an activity and find out which benchmarks it addresses.

www.dnr.state.mn.us/education/teachers/edstandards_intro.html

Change in Plant Zones

It's official—Zone 5 has moved into Minnesota! The National Arbor Day Foundation has changed the familiar plant hardiness zones to reflect changing conditions. Tree lists for zones are included on the Web site.

www.arboday.org/media/zones.cfm

May is Arbor Month

Minnesota Arbor Day is Friday, April 27, 2007. Minnesota is the only state with a whole Arbor Month! www.dnr.state.mn.us/arbormonth

RESOURCES FOR PLT ACTIVITIES

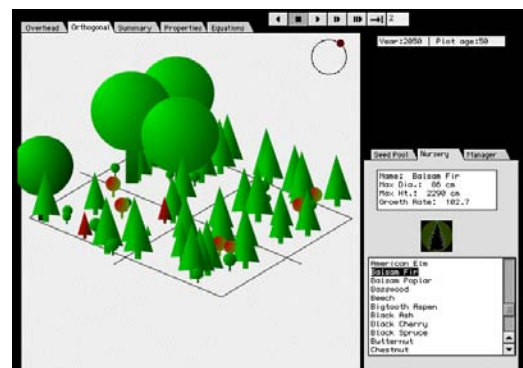
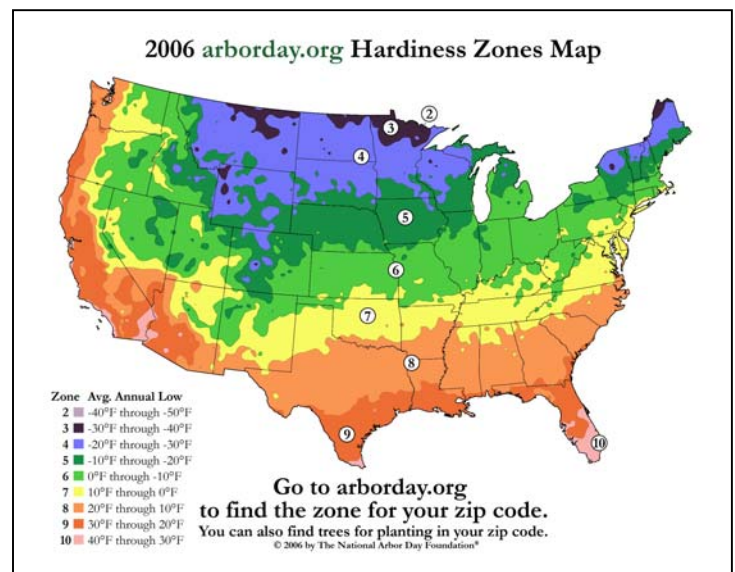
Free AgMags

The *AgMag* is an educational magazine for teachers and schools written for students in grades 4-6. The "Minnesota Agriculture in the Classroom" partnership of the Minnesota Department of Agriculture will produce three issues for the 2006-2007 school year. Each eight-page issue comes with a teacher lesson guide and is full of great agricultural information for science and social studies classes. Get free copies (including classroom sets) by calling Al Withers at 651-201-6688. Back issues (PDFs) on www.mda.state.mn.us/maic/agmags.htm

Support resource for PreK-8's "A Few of My Favorite Things" (#15) and "Pass the Plants, Please" (#16).

Let Your Students Build a SimForest

Download free SimForest software developed by Hampshire College School of Cognitive Science and funded by the National Science Foundation. The software enables students in grades 7-12 to plant more than 30 kinds of trees and choose the environmental factors that affect growth such as temperature, rainfall, and soil conditions. Students may make predictions about and test scenarios for conditions such as global warming, development, and other disturbances. Intended for biology and ecology classes. Teacher and professional development materials are included. Go to <http://ddc.hampshire.edu/simforest>.



Support resource for *PLT PreK-8's* "400-Acre Wood" (#50), "The Global Climate" (#84); *Forest Ecology Module*, "Cast of Thousands" (#2); *Places We Live Module*, "Far-Reaching Decisions" (#7).

Free Curriculum from the Population Reference Bureau

On October 17, 2007, the human population of the United States hit 300 million. The Population Reference Bureau Web site contains more than 30 online lesson plans on human population growth, such as "Population Fundamentals," "Population Policy," "People on the Move," and more

www.prb.org/educators

Good support resource for *PLT PreK-8's* "Loving it Too Much" (#35), "Our Changing World" (#86), and "A Look at Lifestyles" (#92); for *Places We Live Module*, "Mapping Your Community Through Time" (#3), and "A Vision of the Future" (#6).

GRANTS & MONEY



Applying for a Toyota TAPESTRY Grant Just Got Easier

Apply online at www.nsta.org/programs/tapestry for one of 50 large grants of up to \$10,000 each or 20-25 mini-grants of up to \$2,500. Sponsored by Toyota Motor Sales, U.S.A., Inc. and the National Science Teachers Association, the program will award K-12 teachers of science with a total of \$550,000 in three categories: environmental science; physical science; and literacy and science education. To apply for funding, qualified

teachers must prepare an online Toyota TAPESTRY proposal according to the proposal requirements. The deadline for the submission of proposals is **January 18, 2007**.

EARLY CHILDHOOD

Children have a relatively small window of opportunity—up until age 10 or so—to install a love for and wonder of nature. When it comes to "love it before you learn it," the earlier we reach our children, the better. Perhaps that's why PLT is getting so many requests for early childhood workshops! See the next page for a series of early childhood workshops.

Let's finish with a song from the Minnesota Early Childhood Supplement to PLT!
Sing to the tune of "Wheels on the Bus."

*The roots on the trees go
Slurp, slurp, slurp
Slurp, slurp, slurp
Slurp, slurp, slurp
The roots on the trees go
Slurp, slurp, slurp
All around the town*

*The trunks on the trees grow
Strong and straight
Etc.*

**Outdoor
adventures
with
preschoolers**



Minnesota Project Learning Tree
Laura Duffey, state coordinator
MN-DNR, 500 Lafayette Road
St. Paul, MN 55155-4044
651-259-5263, 888-646-6367
laura.duffey@dnr.state.mn.us

PLT Educator Update January 2007

NEXT PAGE:

**UPCOMING WORKSHOPS AND
TRAININGS**

**A current calendar of upcoming PLT
Educator workshops is always listed
on www.dnr.state.mn.us/plt**

TRAINING OPPORTUNITIES

Current PLT, WET, and WILD teacher workshops

Need I say more? For full descriptions and registration instructions, see www.dnr.state.mn.us/plt

Jan. 11, 2007 "[Project WET Introductory Workshop](#)" **FREE** Heart of the Beast Theater, Minneapolis. 3:30 – 6:30 pm

Jan. 13, 2007 "[PLT Early Childhood Workshop](#)" \$30. Fergus Falls

Jan. 20, 2007 "[PLT Places We Live Workshop](#)" on the NEW PLT Secondary module. \$35. Taught by staff from the PLT national office and the Minnesota Historical Society. St. Paul

Jan. 20, 2007 "[Project WILD](#)" \$20. Stewart

Jan. 25, 2007 "[Project WET for the Gifted and Talented](#)" \$25. St. Paul

Feb 9-10, 2007 "[PLT/WET/WILD for K-8 Educators](#)" St. John's Arboretum at St. John's University. \$50. Collegeville (near St. Cloud)

Feb. 24, 2007 "[PLT Early Childhood Workshop](#)" \$30. Hutchinson

Feb. 24, 2007 "[PLT Early Childhood Workshop](#)" \$30. Minnetonka

Mar. 10, 2007 "[PLT for K-8 Educators](#)" \$35. Hutchinson

Mar. 12, 2007 "[PLT Early Childhood Workshop](#)" \$30. Minneapolis

Mar. 24, 2007 "[PLT/WET for K-8 Educators](#)" \$30. Lake Bemidji State Park

Middle/High School Teachers: Use PLT and MHS to Teach Social Studies

Jan. 20, 2007 (9:00 a.m.-3:30 p.m.)

Minnesota Historical Society (MHS) Museum, St. Paul, Minnesota

Ever wonder how the next generation will go about planning for our growing population, transportation, and natural resource needs? Get the newest PLT module for secondary education: *Places We Live* at this dynamic workshop facilitated by **Al Stenstrup** of the PLT National Office. For an overview of the module, see www.plt.org/cms/pages/21_21_15.html. Then, the Minnesota Historical Society will introduce us to their latest new web site, designed for middle and high school students, that harnesses the power of Geographic Information Systems to allow users to easily choose layers of maps to create new maps by adding layers, analyze, find patterns, and learn history. Admission to MHS exhibits free with workshop registration.

To Register: Contact Jennifer Cadwell at MHS, 651-296-1275, Jennifer.cadwell@mnhs.org

St. John's Arboretum Teacher Workshops

Offers bi-yearly FREE teacher trainings on outdoor learning subjects and methods.

www.csbsju.edu/arboretum/environmental_education/default.htm

Minnesota Association for Environmental Education (MAEE) Conference

Coming to Alexandria April 27-28, 2007. Includes Friday field trips led by the Minnesota Naturalists' Association, a "Taste of Douglas County" exhibitor reception, hands-on activities program sharing, and several good, practical sessions that will help improve your environmental education skills.

Visit naaee.org/maee