

Water Habitat Site Study Identification Sheet: Microscopic Organisms

Zooplankton



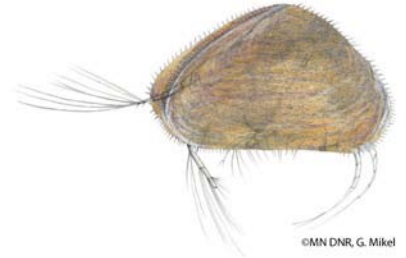
Amoeba



Daphnia / water flea
(Cladocerans)



Rotifer



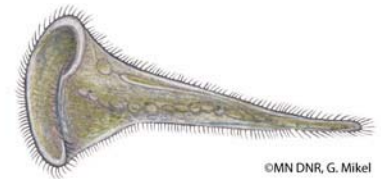
Seed Shrimp
(Ostracoda)



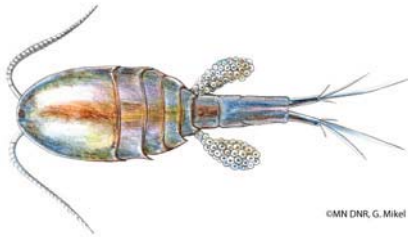
Clam Shrimp
(Conchostraca)



Euglena
(Mastigophora; motile unicellular algae)



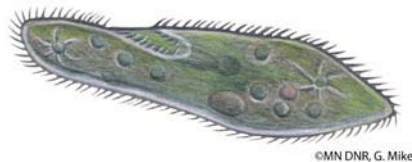
Stentor
(Ciliophora)



Cyclops / copepod



Hydra



Paramecium
(Ciliophora)

Water Habitat Site Study Identification Sheet: Microscopic Organisms

Phytoplankton



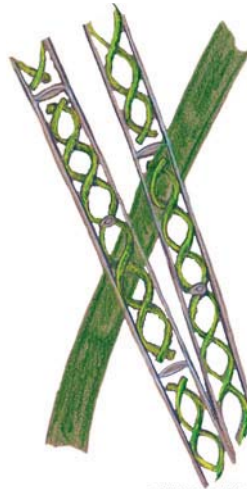
Anabaena
(planktonic blue-green algae)



Pediastrum



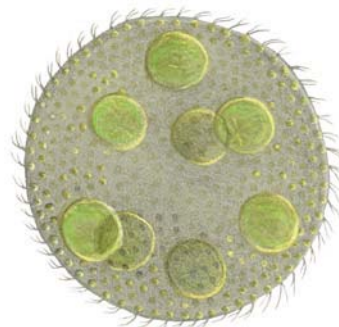
Chara
(plant-like algae)



Spirogyra
(filamentous green algae)



Diatom (hard-sided
phytoplankton)



Volvox
(Mastigophora; colonial algae)