

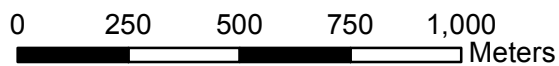
**Esquagamah Lake
DOW 01-0147-00
Aitkin County**



Sensitivity Index

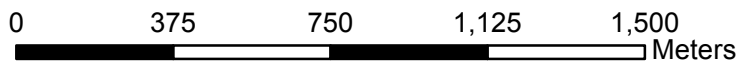
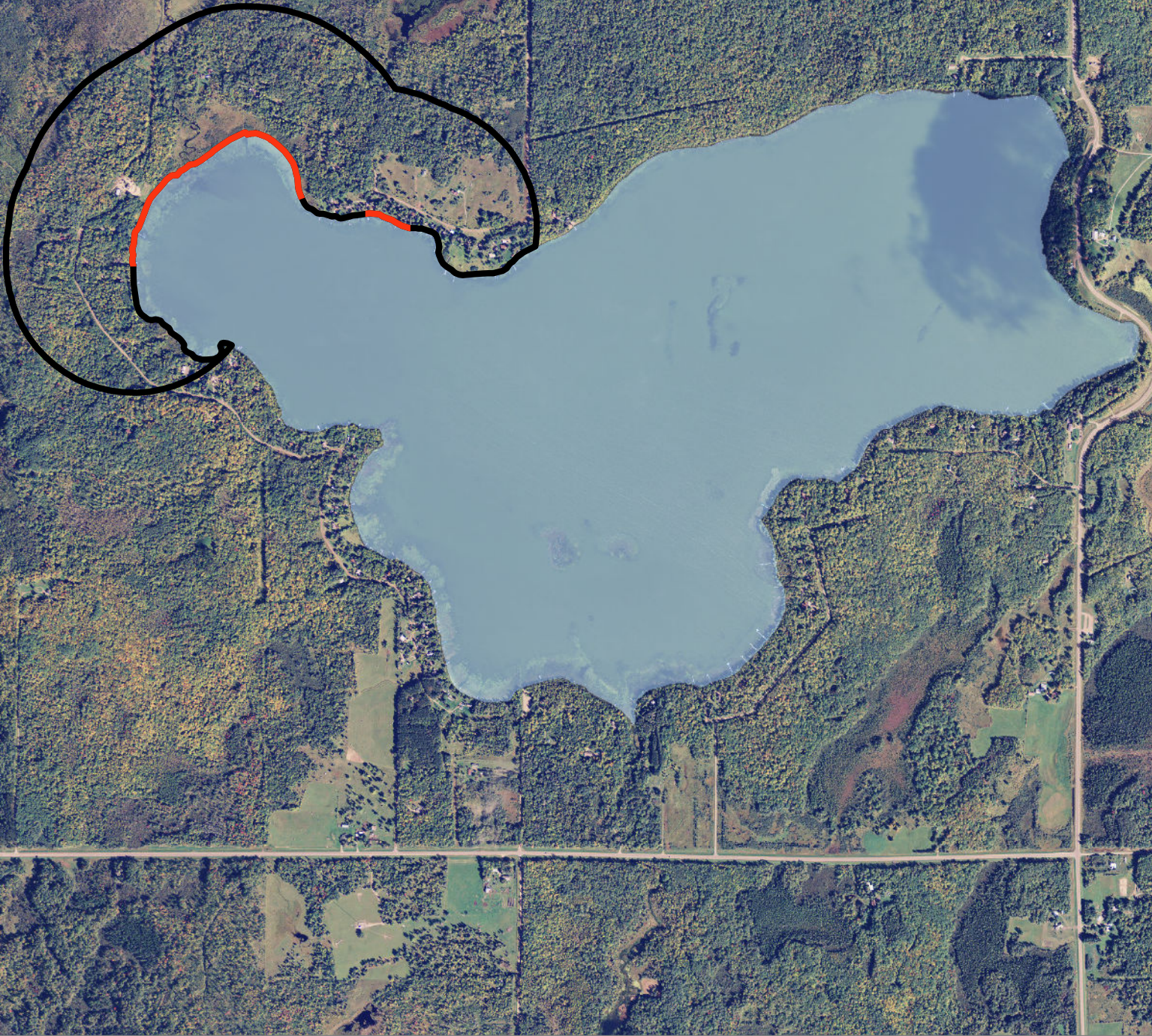
- 6 Highest
 - 5
 - 4
 - 3
 - 2
 - 1
 - 0 High
- ↑

Created by:
MN DNR
2011



**Esquagamah Lake
DOW 01-0147-00
Aitkin County**

- Sensitive Shoreland
- Sensitive Lakeshore



Created by:
MN DNR
2011