



1-800-652-9093

# WILDLIFE LANDS

## Department of Natural Resources

### Division of Fish & Wildlife

The State Wildlife Management Areas (WMA) shown on this map have been acquired and are being managed for three primary reasons: wildlife production, public hunting, and trapping. They belong to you, the public, and are maintained by the Minnesota Department of Natural Resources, Division of Fish & Wildlife, for your recreational use. Treat these wildlife lands as you would your own property -- which they are.

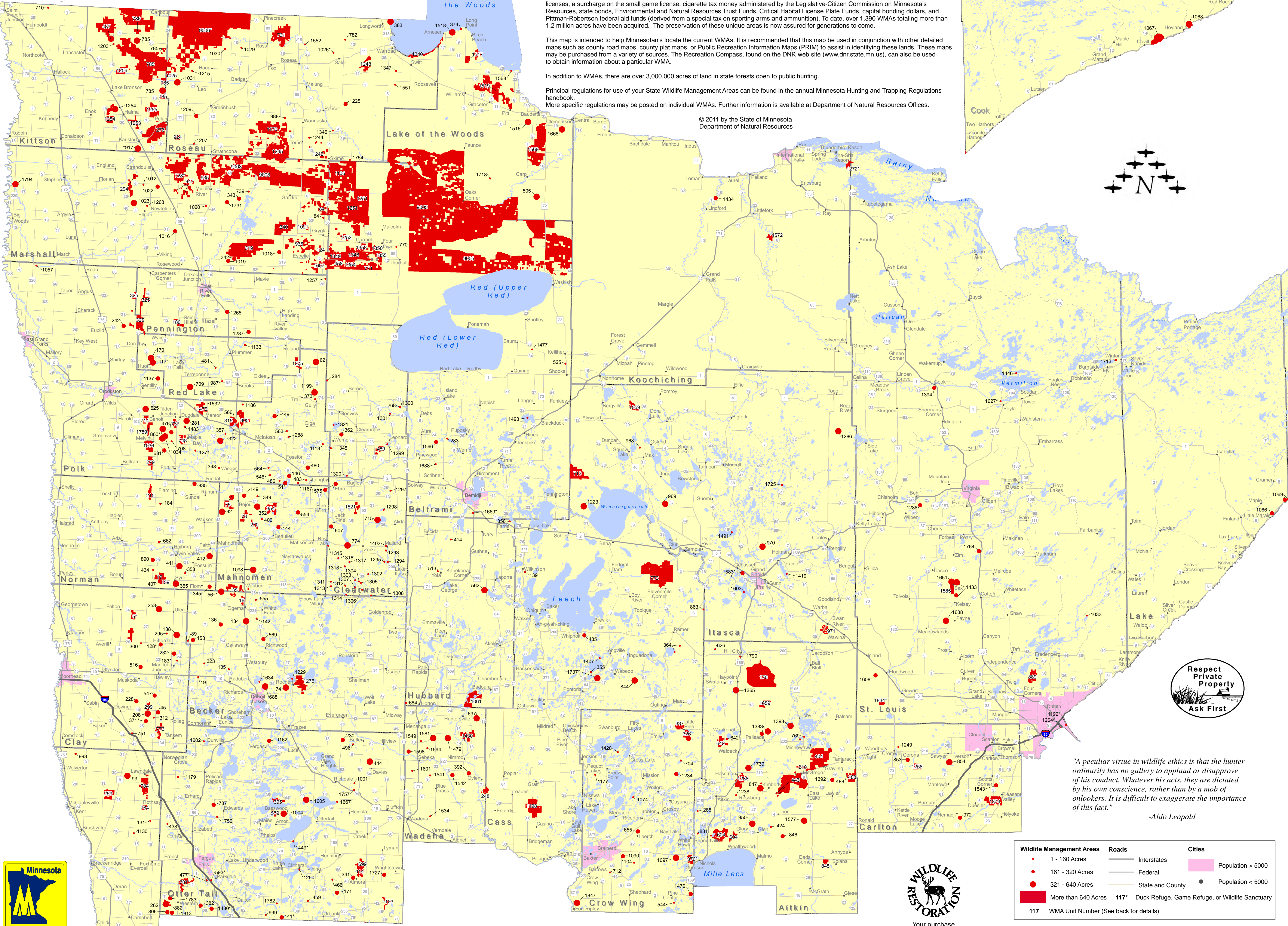
The "Save Minnesota's Wetlands" program was initiated in 1951. Wild lands acquired and developed under this program were paid for by hunting licenses, a surcharge on the small game license, cigarette tax money administered by the Legislative-Citizen Commission on Minnesota Resources, state bonds, Environmental and Natural Resources Trust Funds, Critical Habitat License Plate Funds, capital bonding dollars, and Pittman-Robertson federal aid funds (derived from a special tax on sporting arms and ammunition). To date, over 1,390 WMAs totaling more than 1.2 million acres have been acquired. The preservation of these unique areas is now assured for generations to come.

This map is intended to help Minnesotans locate the current WMAs. It is recommended that this map be used in conjunction with other detailed maps such as county road maps, county plat maps, or Public Recreation Information Maps (PRIM) to assist in identifying these lands. These maps may be purchased from a variety of sources. The Recreation Compass, found on the DNR web site ([www.dnr.state.mn.us](http://www.dnr.state.mn.us)), can also be used to obtain information about a particular WMA.

In addition to WMAs, there are over 3,000,000 acres of land in state forests open to public hunting.

Principal regulations for use of your State Wildlife Management Areas can be found in the annual Minnesota Hunting and Trapping Regulations handbook. More specific regulations may be posted on individual WMAs. Further information is available at Department of Natural Resources Offices.

© 2011 by the State of Minnesota  
Department of Natural Resources



*"A peculiar virtue in wildlife ethics is that the hunter ordinarily has no gallery to applaud or disapprove of his conduct. Whatever his acts, they are dictated by his own conscience, rather than by a mob of onlookers. It is difficult to exaggerate the importance of this fact."*

-Aldo Leopold

Wildlife Management Areas	Roads	Cities
• 1 - 160 Acres	— Interstates	■ Population > 5000
• 161 - 320 Acres	— Federal	● Population < 5000
• 321 - 640 Acres	— State and County	
■ More than 640 Acres	117* Duck Refuge, Game Refuge, or Wildlife Sanctuary	
117 WMA Unit Number (See back for details)		

\* Asterisks indicate Wildlife Management Areas where Duck Refuges, Game Refuges, or Wildlife Sanctuaries exist. All or portions of these areas are closed to trespassing at all times or during the periods indicated on the signs.

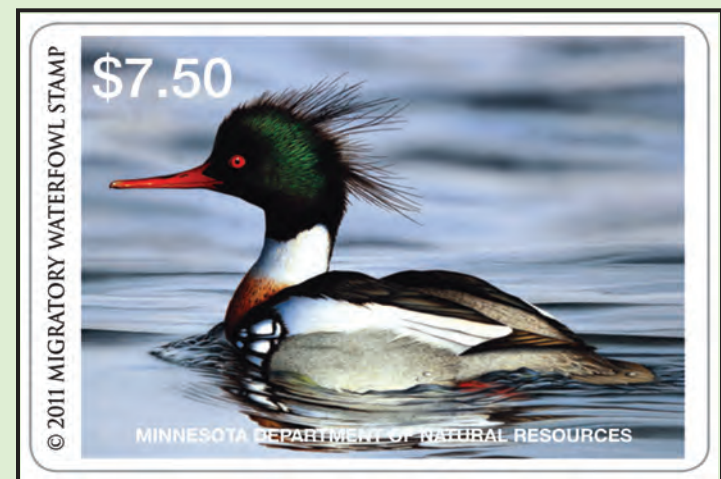


1-888-MINNDNR  
mndnr.gov



Your purchase of hunting equipment supports Wildlife Restoration

# Wildlife Lands



# Northern Minnesota

2011

MINNESOTA DEPT. OF NATURAL RESOURCES  
DIVISION OF FISH AND WILDLIFE, Box 20  
500 Lafayette Road  
St. Paul, MN 55155

## ROAD KEY

- SH - State Highway
- US - U.S. Highway
- CSAH - County State Aid Highway
- CR - County Road
- TR - Township Road
- TRL - Seasonal Road or Foot Trail
- SFR - State Forest Road
- NFR - National Forest Road

\* Asterisks indicate Wildlife Management Areas where Duck Refuges, Game Refuges, or Wildlife Sanctuaries exist. All or portions of these areas are closed to trespassing at all times or during the periods indicated on the signs.

**Minnesota DNR Information Center**  
500 Lafayette Rd.  
St. Paul, MN 55155-4040  
651-296-6175 (Metro Area)  
1-888-MINN DNR (646-6367) - MN Toll Free  
(TTY) Telecommunications Device for the Deaf  
651-296-5484 (Metro Area TTY)  
1-800-657-3929 (Toll Free TTY)  
DNR Web Site: [mndnr.gov](http://mndnr.gov)

PRIM-Public Recreation Information Maps  
Showing public lands with their recreation facilities are available through the DNR and many sporting goods and map stores.

This information is available in alternative format upon request.

\*Equal opportunity to participate in and benefit from programs of the Minnesota Department of Natural Resources is available to all individuals regardless of race, color, creed or religion, national origin, sex, marital status, status with regard to public assistance, sexual orientation, age or disability. Discrimination inquiries should be sent to the Minnesota Department of Natural Resources, 500 Lafayette Road, St. Paul, MN 55155-4049, or the Equal Opportunity Office, Department of the Interior, Washington, DC, 20240.



Unit Number	Name	Acres	Nearest Town	Directions From Nearest Town
<b>Aitkin County</b>				
176	Moose Willow	16945	Hill City	3 S US 169, 5 E SFR
210	McGregor	664	McGregor	1 N SH 65
285	Cedar Lake	53	Aitkin	3 W SH 210, 2 1/2 S CSAH 28, 1 W TR
404	Graying Marsh	9634	McGregor	1 E SH 210, 2 1/2 N CR 73
424	Swamp Lake	27	Glen	1/2 E, 3 NE + E, 1/4 N on TRS
443	Kimberly Marsh	10596	McGregor	4 W SH 210, 4 S TR
488	Salo Marsh	2031	Tamarack	1 1/2 S CSAH 16, 1 E, 1 S, 1 E + S TRS
604	Ripple River	5274	Bennettville	1 E + N TR
626	Little Hill River	142	Hill City	5 W SH 200, 1 N CR
642	Lt. Willow River	1854	Aitkin	13 N US 169, 5 W CSAH 3
769	Sandy Lake	24	McGregor	8 N SH 65
831	Farm Island Lake	35	Aitkin	8 S US 169, 2 W CSAH 11, 1/4 N TR
845	Pliny	703	Dads Corner	3 E CSAH 2
846	Jewett	164	McGrath	6 N SH 65, 3 W CR 2, 7-1/2 N & W 230th Place
847	Newstrom Lake	728	Aitkin	6 E SH 47, 4 N + E CSAH 5, 1 N TR
950	Rabbit Lake	404	Glen	1 1/2 N SH 47, 1 W TR
1238	Aitkin	3217	Aitkin	4 NE US 169, 1/2 E CSAH 56
1365	Hay Point	342	Hoypoint	1 3/4 S US 169, 1/2 W TR
1363	Roberts-Wickstrom	2031	Palisade	1 NE CSAH 10, 2 N TR
1392	Lawler	235	Lawler	3 1/2 N CSAH 16, 3/4 W CSAH 30
1393	Wold	426	McGregor	10 N SH 65, 1 W TR
1577	Woross	619	Dads Corner	9 N SH 65, 1 W TR 85
1659	Willowspit	1312	Palisade	8 N CSAH 10, 2 N TR
1739	French Lake	536	Hassman	1/2 N US 169, 2 E SH 210, 1/2 N TR
1790	Hill Lake	5	Hill City	1/2 S US 169

Unit Number	Name	Acres	Nearest Town	Directions From Nearest Town
<b>Becker County</b>				
16	Spring Creek	960	Ogema	1 1/4 W CSAH 16, 1 N, 2 W TR, 1 1/2 N CR 107
19	Lunde	50	Lake Park	1 1/2 W US 10, 1/4 S CSAH 1
56	Coburn	400	Waubun	5 W SH 113, 2 S TR
74	Pickertel	80	Detroit Lakes	6 E SH 34, 1 N TR
89	Melbye	30	Hitterdal	1 N SH 32, 3 1/2 E TR
134	Ogema Springs	508	Ogema	3 S SH 59
135	Audubon	31	Audubon	2 N CSAH 13
136	Pednor	244	Lake Park	11 N CSAH 9 + CR 101, 1 E CR 105
142	Teiken-Dalve	73	Ogema	2 S US 59, 2 1/2 E CR 153 + 109
153	Atlanta	182	Hitterdal	5 E CSAH 26 + 14
323	Cuba	90	Lake Park	3 W + N CSAH 7
555	White Earth	43	Ogema	3 E SH 224, 1 1/4 N CR 111, 1/2 W + N TR
589	Callaway	317	Callaway	3 E CSAH 14, 1/4 N CSAH 23, 1/2 E TR
688	Frank	351	Detroit Lakes	2 N CSAH 21
1229	Shelly Island	104	Rochert	Island on Cotton Lake
1276	Hubbel Pond	3428	Rochert	1 1/2 N SH 1
1634	Stenseth	27	Detroit Lakes	2 1/2 N CSAH 21, 1 W TR 131

Unit Number	Name	Acres	Nearest Town	Directions From Nearest Town
<b>Beltrami County</b>				
283	Long Lake	160	Wilton	11 N SH 89, 1/2 E TR
458	Carmelee	3907	Grygla	5 S CSAH 64, 1 E CR 2, 1/4 E CSAH 42
525	Shooks Slough	21	Kelliher	2 S SH 72
770	Steenerson	159	Thorhult	2 1/2 N TR, 1/2 TR
771	Harme	4529	Thorhult	9 1/2 W CSAH 42, 1 S TR
1106	Wapiti	31758	Grygla	5 N CSAH 48
1251	Moose River	21272	Four Town	9 N + W CSAH 44, 1 N TR
1252	Bennville	1194	Grygla	3 E SH 89, 1/2 N CR 703
1348	Wolf Trail	7393	Grygla	5 S CSAH 54, 1 E CR 2, 3 E CSAH 42
1349	Willow-Run	3583	Grygla	5 S CSAH 64, 1 E CR 2, 1/2 E CSAH 42
1350	Gun-Dog	1357	Four Town	2 1/4 W SH 89
1353	Saw-Whet	1286	Four Town	3 W SH 89, 1 S CR 707, 1 W CR 700
1354	Lea	224	Grygla	5 S CSAH 54, 1 E CR 2, 4 E CSAH 42
1355	Fireweed	2266	Thorhult	4 W CSAH 42
1477	Woodrow Padiocetes	70	Saum	2 E CR 23, 1 E CR 38, 1 1/4 TR
1493	Carmen Bergerding	33	Blackduck	Island in Blackduck Lake
1566	James B. Fern	218	Wilton	N SH 89, 2 W CR 600, 1 1/4 N CR 511
1689	Bernadi Slough	49	Bernadi	2 S SH 71, 1/2 W CSAH 46
1688	Henry O. Bjoring	114	Scribner	3 1/2 N SH 89, 2 W CSAH 22, 1/2 S TR
9005	Red Lake	321149	Faunce	12 W SFR

Unit Number	Name	Acres	Nearest Town	Directions From Nearest Town
<b>Carlton County</b>				
853	Mervin Lake	242	Cromwell	3 E SH 210, 3 S TR, 1 W TR + TRL
854	Sawyer	600	Mooney	2 S CSAH 7
872	Dye	161	Moose Lake	9 E CSAH 8
1249	Carl Sandell	40	Cromwell	1 N SH 73, 1 E CR 122
1258	Kettle Lake	1160	Cromwell	3 E SH 210, 3 S TR
1374	Blackhoof River	3798	Carlton	8 S CSAH 3
1543	Wrenshall	160	Wrenshall	2 S CSAH 1, 1 W CSAH 4, 2 S CR 102

Unit Number	Name	Acres	Nearest Town	Directions From Nearest Town
<b>Cass County</b>				
139	Steamboat	35	Wilkinson	1 1/2 N US 371, 1 1/2 E NFR, 2 S SFR
248	Dry Sand	718	Oylen	3 S CSAH 30
355	Wanna Lake	108	Hackensack	9 1/2 E CSAH 5, 2 1/2 S + E CSAH 11
364	Big Rice	53	Remer	2 SE SH 200, 3 1/2 S CR 133, 1 1/2 W TR
485	Al Gwah Ching	228	Whipholt	2 E SH 200, 3/4 S TR
772	Mud Goose	3254	Baird Club	1 E US 2, 5 SW CR 18 + 3
844	Deagett Brook	639	Thorhult	2 N SH 6, 5 W CR 48 + 5 N CR 55, 1 1/2 W SFR, 1/2 S TRL
863	Willow Lake Deer Yard	40	Remer	6 N SH 6, 1 1/4 E NFR 2727
1198	Meadow Brook	5772	Motley	3 1/2 N SH 64, 3 E CSAH 34, 6 N CSAH 35
1407	George Cook	152	Longville	1 S SH 84, 3 W CR
1737	Mule Lake	351	Wabedo	3 3/4 SW CR 12, 1 3/4 W CSAH 47, 1 N SH 84

Unit Number	Name	Acres	Nearest Town	Directions From Nearest Town
<b>Clay County</b>				
* 5	Fellon	1017	Fellon	2 1/2 E CSAH 34
45	Skree	165	Hawley	8 1/2 S CSAH 31
* 128	Cromwell	287	Hitterdal	2 1/2 W CSAH 26
138	Goose Prairie	491	Hitterdal	2 N SH 32
* 183	Highland Grove	80	Hitterdal	4 S SH 32, 1 E TR
238	Clay County	614	Hawley	9 S CSAH 20, 1 W TR
228	Magnusson	267	Downer	3 1/2 E + N CSAH 10, 2 N TR
232	Hitterdal	262	Hitterdal	2 S SH 32
258	Ulen	480	Ulen	3 W CSAH 34
295	Aspen	40	Hitterdal	2 W CSAH 26, 2 N TR
299	Bjornsson	648	Downer	6 E CSAH 10
300	Jeral	75	Hitterdal	7 W CSAH 26
312	Hay Creek	40	Hawley	9 S CSAH 31, 1/2 W TR
371	Janssen	919	Barnesville	2 E SH 34, 4 N CSAH 25, 1 E CR 126
* 516	Gruhl	304	Hawley	4 W US 10, 1 N CSAH 113
547	Hawley	163	Hawley	5 S CSAH 31
751	194 Borrow Pit	93	Barnesville	2 N SH 9, 1/2 W CR 57
773	Barnesville	1630	Barnesville	4 E SH 34, 3 1/2 N CSAH 31 + 6

Unit Number	Name	Acres	Nearest Town	Directions From Nearest Town
<b>Clearwater County</b>				
268	Bagley Lake	25	Leonard	7 1/2 N CSAH 14, 1 1/2 E + 1/2 S TRL
284	Le Blanc	159	Gonick	4 1/2 N CSAH 7, 5 W TR, 2 N CSAH 2, 6 N TR, 1 1/2 S
362	Little Pine Lake	312	Gonick	5 S CSAH 7, 1 E CSAH 6
489	Old Red Lake Trail	1135	Leonard	2 W SH 223, 1 S CSAH 85
607	Perch Lake	252	Ebro	9 S CSAH 7
715	Upper Rice	381	Alda	5 W CSAH 36
774	Lower Rice	441	Zerkel	2 3/4 W SH 200
1293	Mallard Lake	45	Zerkel	6 E CSAH 37, 1 S TRL
1294	Gill Lake	33	Lake Itasca	2 1/4 W SH 200, 1 N + W TRL
1295	Sucker Lake	24	Lake Itasca	2 1/2 W SH 200, 1/2 W SFR, 1/2 N TR
1297	Daniel Lake	24	Shelvin	3 S CSAH 2 + CR 97
1298	Mud Lake	4	Bagley	3 S SH 92, 3 E CSAH 13, 2 S CSAH 30, 2 S + E TR
1299	W. Four Legged Lake	21	Leonard	1 S, Island in Four Legged Lake
1300	Clearwater Lake	42	Leonard	5 N CSAH 14, 1/2 W CSAH 4, 1 1/4 N TR
1301	Spike Lake	37	Leonard	5 1/2 N CSAH 14, 1/2 W CSAH 4, 1/2 N TRL
1302	Sugar Bush Lake	20	Zerkel	3 1/2 S + E SH 200, 5 S SFR
1303	Long Lost Lake	54	Zerkel	9 1/4 S SH 200 + CSAH 39, 2 NW TR
1304	Glanders Lake	35	Zerkel	8 S SH 200 + CSAH 39, 1/2 W TR
1305	Frelsen Lake	56	Zerkel	8 S SH 200 + CSAH 39
1306	Stassen Lake	35	Zerkel	8 1/2 S SH 200 + CSAH 39, 1 E, 1 1/4 S TRL
1307	Long Lost Lake-So.	20	Zerkel	10 1/2 S SH 200 + CSAH 39
1308	Gardner Lake	26	Lake Itasca	6 S + W CSAH 38, 6 S 214 W - Hill Road
1311	Little Bass Lake	36	Zerkel	4 1/2 W SH 200, 10 S SFR, 2 W TRL
1312	Little Rock Lake	40	Zerkel	11 S SH 200 + CSAH 39, NW 2 SFR, 1 1/2 W TRL
1313	Upper Camp Lake	22	Zerkel	12 S SH 200, CSAH 39, CSAH 37, 6 W SH 113, 2 N SFR
1314	Pickertel Lake	33	Zerkel	12 S SH 200, CSAH 39, CSAH 37, 2 W SH 113, 1/2 N TR
1315	Roy Lake	35	Zerkel	7 W SH 200, 1 S SFR, 1/4 W TRL
1316	Island Lake	33	Zerkel	4 1/2 W SH 200, 3 S SFR
1317	Wapatus Lake	40	Zerkel	1 W SH 200, 1 1/2 S CR 103, 3 SW SFR
1318	McKenzo Lake	33	Zerkel	4 1/2 W SH 200, 4 1/2 S SFR, 4 1/2 N TR
1320	Minnow Lake	8	Bagley	1 1/4 N SH 92, 2 1/2 W CSAH 45, 1/2 S TR
1321	Pine Lake	5	Gonick	Island in Pine Lake
1345	Carter	106	Clearbrook	1 S SH 92, 4 W CSAH 6, 5 S CSAH 7, 3/4 W TR
1402	Robinson Lake	319	Bagley	5 E CSAH 37
1521	Mosquito Creek	747	Bagley	6 S SH 92

Unit Number	Name	Acres	Nearest Town	Directions From Nearest Town
<b>Cook County</b>				
1067	East Colville	630	Grand Marais	10 NE SH 61
1068	Horsehoe Bay	276	Hovland	1 1/2 NE SH 61

Unit Number	Name	Acres	Nearest Town	Directions From Nearest Town
<b>Crow Wing County</b>				
326	Birchdale	1426	Emily	6 1/2 E CSAH 1, 1 1/2 S CR 106
337	Duck Lake	1041	Emily	5 E CSAH 1
544	Roosevelt	80	Pine Center	2 1/2 S CSAH 8, 1/2 W TR
655	Loerch	207	Brainerd	3 E SH 18, 4 N CSAH 25, 1 3/4 E+N TR
704	Upper Dean	40	Emily	5 S SH 6, 3 1/2 E CSAH 36, 1 SE CR 105
712	Ray Cook	128	Brainerd	4 S CSAH 5, 1/2 W TR
1074	Mission Lake	119	Marfield	3 NW CSAH 3, 4 NW CSAH 19
1090	Poor Farm	312	Brainerd	2 SE US 25
1097	Hesitation	370	Deerwood	9 S SH 6, 3/4 W SH 18, 1/4 S TR
1104	Tiefl Paulson	40	Brainerd	5 E SH 18, 2 1/2 S CR 23, 1 W TR
1177	Lowell	156	Deerwood Lakes	1 E CSAH 11
1234	Lower Dean	243	Crosby	1 NE SH 6, 7 NE CSAH 11, 1/2 N + 2 W TR
1376	Round-Rice Bed	1019	Garrison	1 N SH 18, 2 W TR
* 1428	Uggard	110	Cross Lake	2 1/4 N CSAH 6, 4 W CSAH 16
1476	H. & M. Deutsch	319	Brainerd Center	4 E CSAH 21
1847	Little Nokasippi River	334	Fort Ripley	3 1/4 N CSAH 371, 3/4 E Over-the-hill Road (TR)

\* Asterisks indicate Wildlife Management Areas where Duck Refuges, Game Refuges, or Wildlife Sanctuaries exist. All or portions of these areas are closed to trespassing at all times or during the periods indicated on the signs.

Unit Number	Name	Acres	Nearest Town	Directions From Nearest Town
<b>Hubbard County</b>				
356	Wolf Lake	50	Rosby	5 1/4 E US 2, 1/2 N TR
414	Rockwood	81	Bernadi	14 S US 71, 5 SW CR 118, 1N TR
425	Birch Creek	52	Lake George	4 NW CSAH 4
562	Kabekona	381	Lapone	2 W SH 200, 2 1/2 SH 64
684	Low	154	Menahga	3 1/2 N US 71, 3W + 1/4 TR
1061	Crow Wing Chain	3267	Hubbard	8 E SH 87

Unit Number	Name	Acres	Nearest Town	Directions From Nearest Town
<b>Itasca County</b>				
713	Morph Meadows	4894	Pennington	2 1/2 N CSAH 39, 2 1/2 E TR, 4 N NFD, 1/2 E TRL
908	Natures Lake	40	Max	1 N CR 4, 1 1/2 W +N Davidson Rd, 3 W USFS Rd.
968	Bowsting Deer Yd.	493	Deer River	8 N SH 6, W 2 1/2 CR 37, 1 1/2 N CR 153
970	Prairie Lake Deer Yd.	588	Grand Rapids	2 N SH 38, 35 E CR 61
971	Swan River Deer Yd.	909	Swan River	1 1/2 SW SH 65
1059	Dishpan	1524	Wirt	5 W CR 29, 2 NW CR 26, 2 NW NFR 2227
1223	Sugar Lake	382	Pennington	5 1/2 S CR 39, 8 NE NFR 2171
1286	Peloquin	322	Togo	10 S SH 65, 2 1/2 E SFR
1419	Trout Lake Eagle	57	Coleraine	3 1/2 S+E CR 10
1491	Balsam-Deer Islands	35	Taconite	Islands, 15 N CR 7, 1 1/2 W CR 51 to lake access
1583	Bass Brook	297	Grand Rapids	2 W US 2, 1 W CR 63
* 1603	Nesbit Island	10	Grand Rapids	Nesbit Island, Pokegama Lake
1725	Balsam Island	1	Nashauk	1