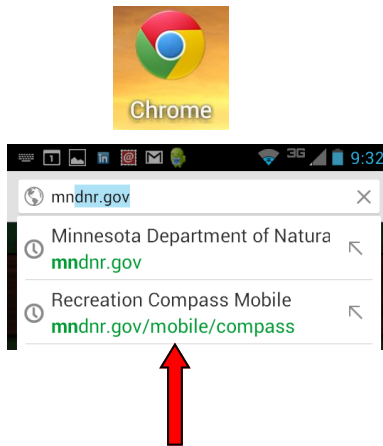
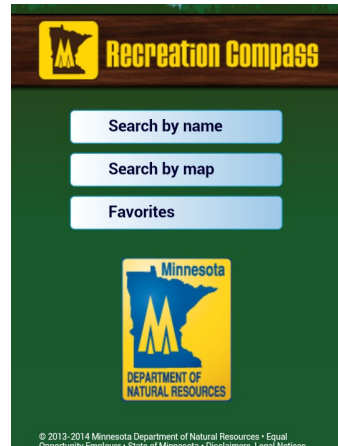


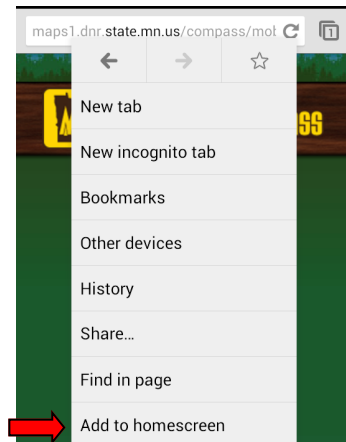
Using [Mobile DNR Recreation Compass](#) on an Android Device, Online Map Option (WiFi, 3G, 4G)



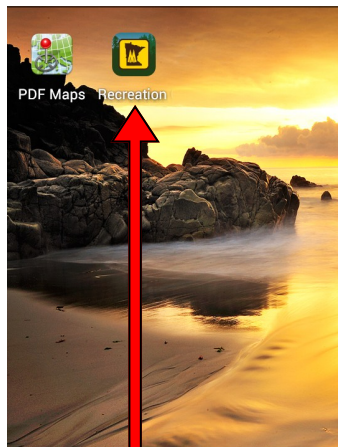
Go to the following site in a web browser such as Chrome
mndnr.gov/mobile/compass



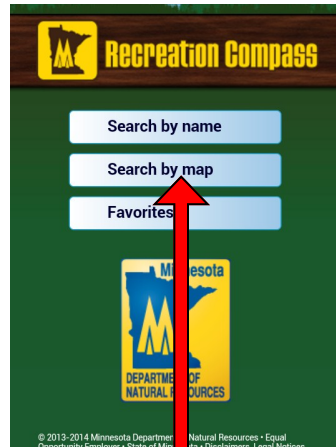
Touch the Android menu button or Android Action bar (Depends on device and version of Android)



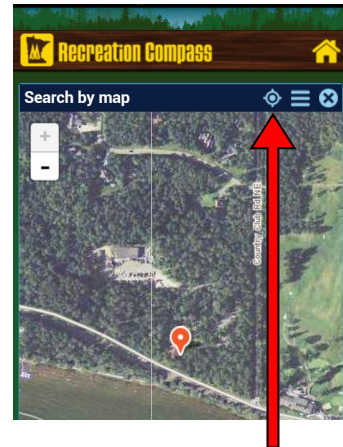
Touch the "Add to Homescreen" option to add the mobile site as an icon to the Homescreen.



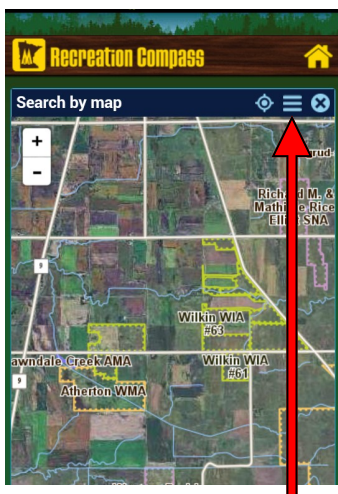
From the Homescreen, touch the new Recreation Compass Icon



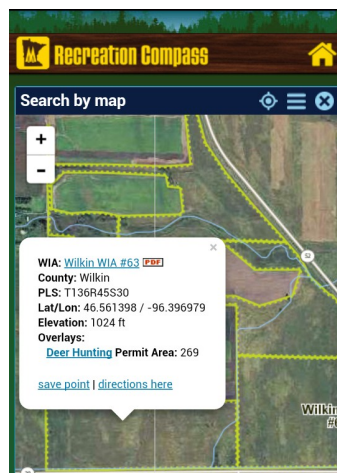
Best option to search for WIAs is by map.



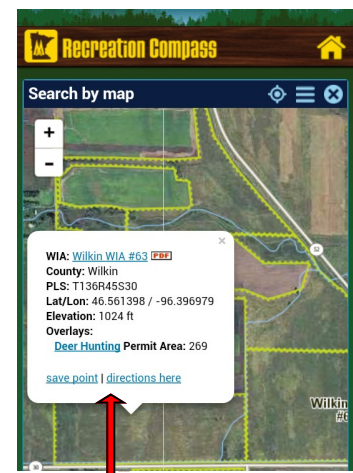
Option to show current GPS location



Map includes all DNR Management Unit type boundaries with the option of selecting different map backgrounds and overlays including permit areas and weather radar image.



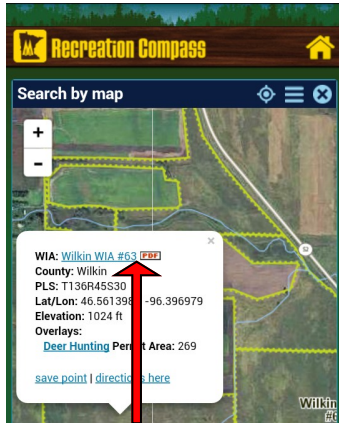
Each management unit can be identified by touching an area within the unit boundary.



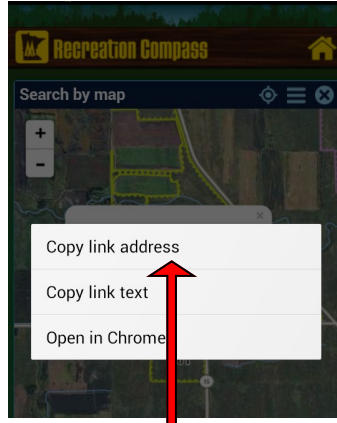
Create a named point on the map (ex. Deer stand) or get turn-by-turn directions via the [Google Maps app](#) (available from the App Store).

Using [Avenza PDF Maps](#) on an Android Device, Offline Map Option (No WiFi, 3G, 4G)¹

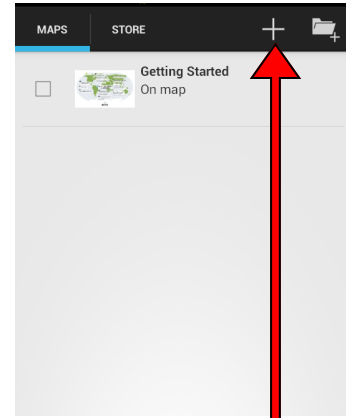
¹Requires downloading [Avenza PDF Maps](#) from the Play Store and downloading DNR PDF maps before going offline



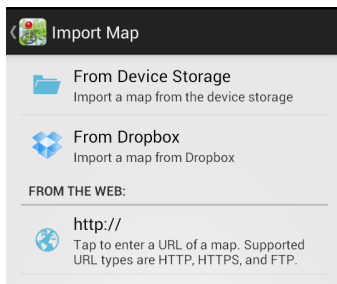
While connected in [Recreation Compass](#) on your Android mobile device, touch and hold on a link to a detailed PDF map you want to access while offline.



Touch Copy link address

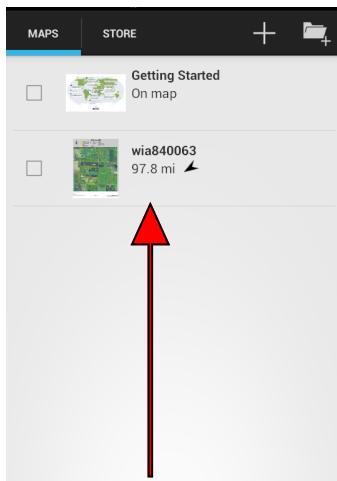


From PDF Maps, go to Import a Map

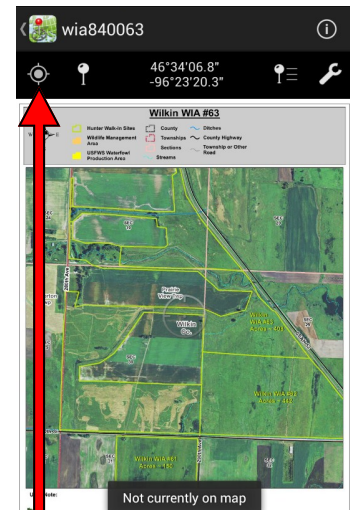


Import a map From the Web,

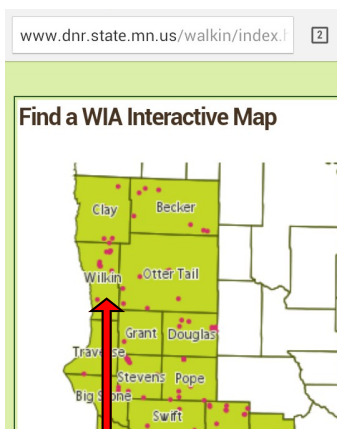
Alternatively, you can download multiple PDF maps from a home computer and either copy them to your Android device via a USB cord or use a Dropbox account to download.



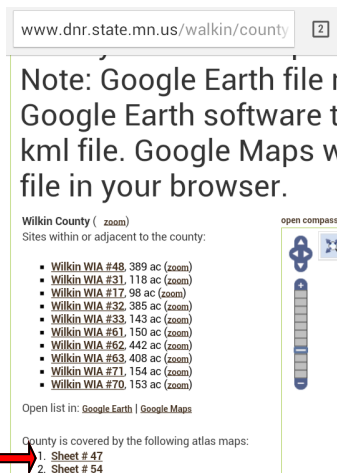
Once PDF is done processing, touch pdf map to open map.



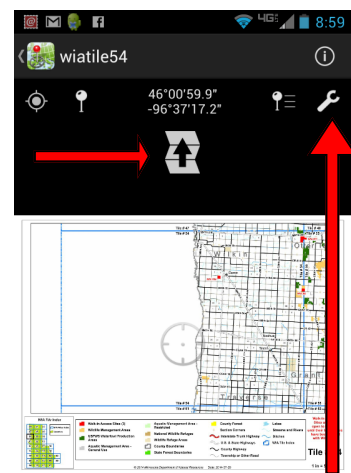
GPS location can be activated if you're currently in the map area.



WIA Atlas tiles can also be used in PDF Maps app to help provide directions to adjacent WIAs and WMAs while working offline. Touch a WIA County from the [interactive map](#).



Copy the link address from an Atlas Sheet as referenced in previous steps above or download a series of atlas sheets to your PC and copy to your Android device to import.



Adjacent maps are available by clicking on the page button (pan the map down if page button not displayed). Other tools in the app include taking waypoints, photos and recording tracks.

Overlaying WIA boundaries over other basemaps on an Android Device, Online or Offline Map Options ¹

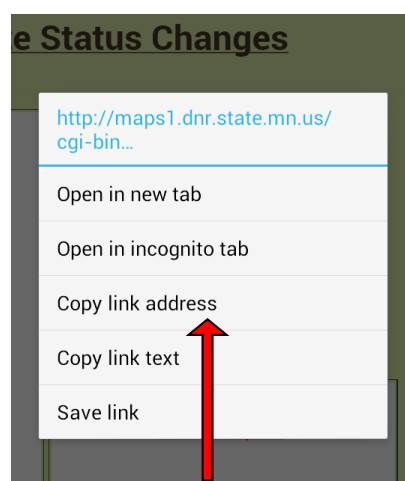
¹Requires downloading [Google Earth](#), [Google Maps](#) and/or [MAPin](#) from the Google Play Store and downloading map files before going Offline



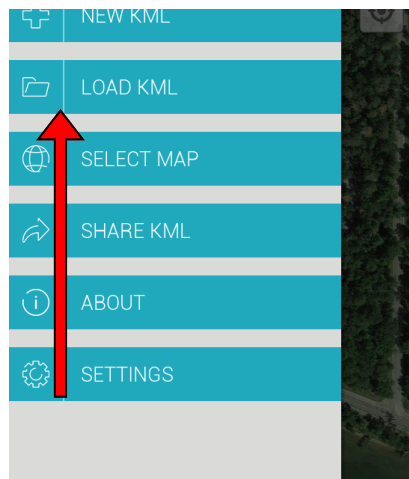
There are several apps that can be downloaded from the Google Play Store that work with [Google Earth files \(KML\)](#) accessible from the [WIA page](#) and the [WMA page](#) to overlay with online basemaps as well as to provide turn-by-turn directions to these sites. MAPin app will be used in these instructions because it provides more utilities for the user.



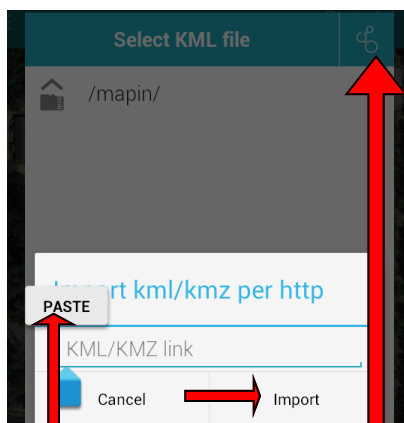
From the WIA homepage, touch and hold the Google Earth file (KML) link



Choose Copy link address



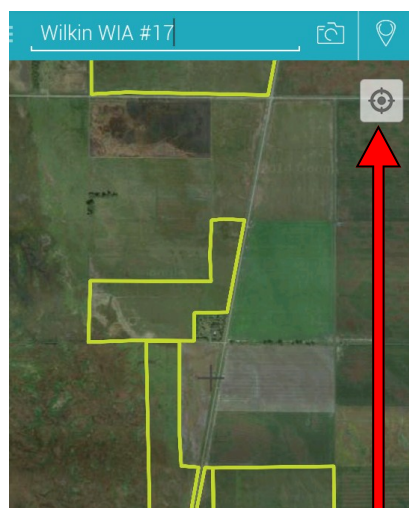
Open MAPin app, swipe from the left side of the screen to the right and touch the LOAD KML menu



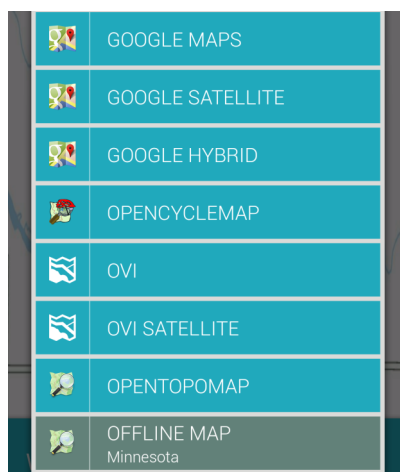
Touch the tool in the upper right corner and touch and hold in the KML/KMZ link area to paste the link address. Then touch Import button.



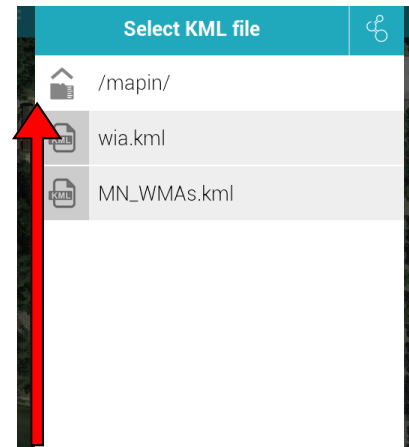
Once the WIA KML is loaded, Swipe from the right side of screen to left to get a list of WIAs. Can also search from map page



Touch the GPS location button to show your location if currently within the WIA



Swipe from the left side of the screen to the right to load a different basemap service including offline maps by state.



Multiple KML files can be loaded for reference in MAPin including WMAs. Users can copy KML files from a PC to import in MAPin as well.