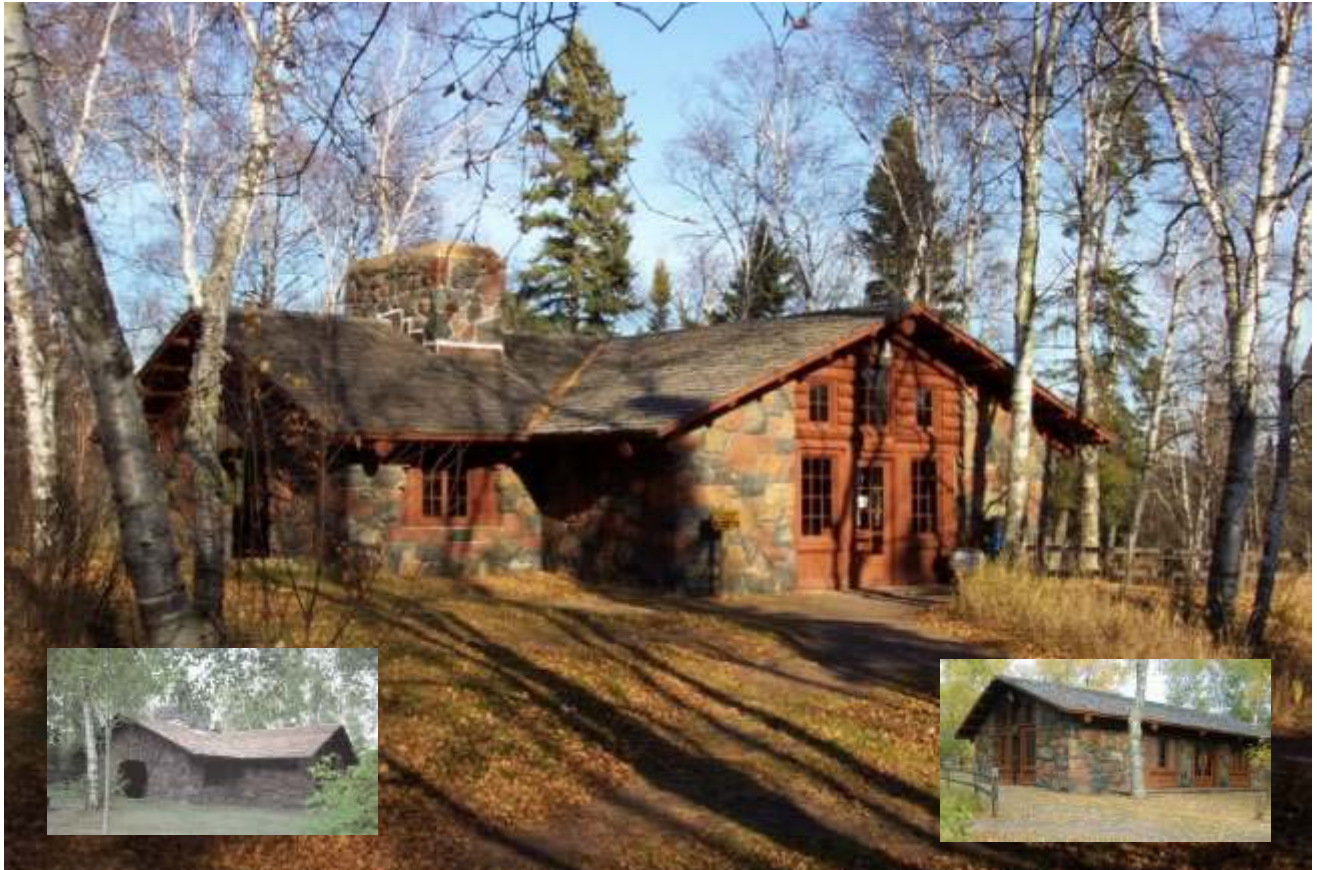


**Today, over 80 CCC buildings, structures, and objects are found within the Gooseberry Falls State Park National Register of Historic Places historic district.**

**Here's a look at some of the impressive work.**



**Lady Slipper Lodge (1935)**

**Cost: \$2,049.72 3,228 Man Days**

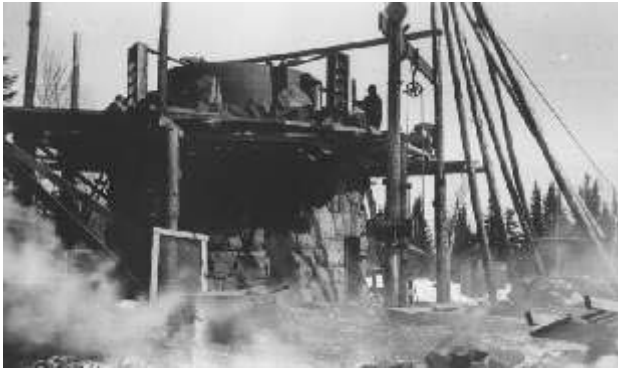


*Lakeview Shelter Construction*



**Lakeview Shelter (1936)**

**Cost: \$2,049.72 3,874 Man Days**

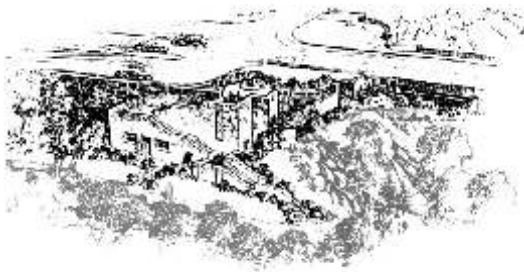


**Water Tower (1936)**



**Campground Shelter (1938)**

**Cost: \$4,350.32 6,946 Man Days**



**“Castle in the Park” concourse (1936-1940)**



**Falls View Shelter (1939)**

**Cost: \$4,386.44 5,300 Man Days**



**Guard Rail (1939), fireplaces, picnic tables, & benches.**



**Latrine (1935)**

**Cost: \$216.08 2,225 Man Days**



**Ice House (1941)**

**Cost: \$240.00 547 Man Days**



*Fire fighting*

**The “CCC Boys” also helped in the community when needed.**

**Emergency CCC Camp #1720 was at Gooseberry from  
May to October 1934.**

**CCC Camp #2710 was here from July 1934 until it was terminated  
in May 1941. It remained in operation longer than any other  
Minnesota state park CCC camp.**

**After the camp closed a local newspaper wrote,**

***“Here lies a state park that will live in the years to come  
as a tribute to the nation’s Civilian Conservation Corps  
and a monument to Company 2710,  
its officers, and its boys.”***

1946



We'd like to thank the following  
for providing images:

Maynard Antilla  
Marvin Erickson  
Robert Hauge  
Thomas Hughes  
Ed Kane  
Bert Keller  
John Lunseth  
M. Midal  
Palmer Nelson  
Cyril O'Bryen  
Bernard Penner  
Don Price  
Chuck Schaffer  
Paul Sundberg  
R. Wagner  
Ted Wahlberg  
Wesley W.  
Ralph Welton  
Iron Range Research Center