


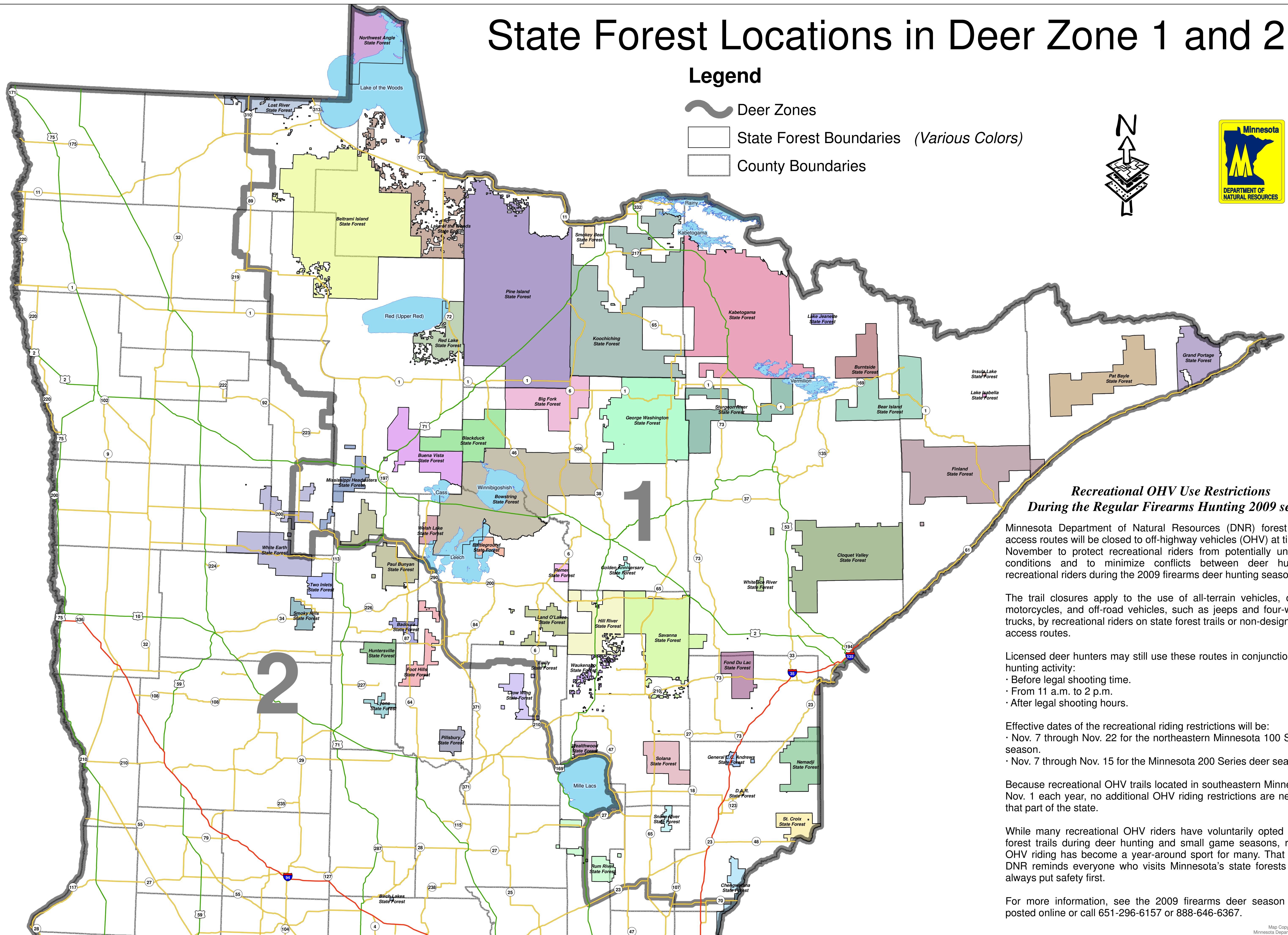
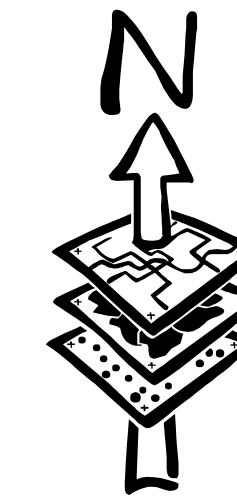


State Forest Locations in Deer Zone 1 and 2

Legend

-  Deer Zones
-  State Forest Boundaries (Various Colors)
-  County Boundaries



Recreational OHV Use Restrictions During the Regular Firearms Hunting 2009 season

Minnesota Department of Natural Resources (DNR) forest trails and access routes will be closed to off-highway vehicles (OHV) at times during November to protect recreational riders from potentially unsafe riding conditions and to minimize conflicts between deer hunters and recreational riders during the 2009 firearms deer hunting season.

The trail closures apply to the use of all-terrain vehicles, off-highway motorcycles, and off-road vehicles, such as jeeps and four-wheel drive trucks, by recreational riders on state forest trails or non-designated forest access routes.

- Licensed deer hunters may still use these routes in conjunction with their hunting activity:
- Before legal shooting time.
 - From 11 a.m. to 2 p.m.
 - After legal shooting hours.

- Effective dates of the recreational riding restrictions will be:
- Nov. 7 through Nov. 22 for the northeastern Minnesota 100 Series deer season.
 - Nov. 7 through Nov. 15 for the Minnesota 200 Series deer season.

Because recreational OHV trails located in southeastern Minnesota close Nov. 1 each year, no additional OHV riding restrictions are necessary in that part of the state.

While many recreational OHV riders have voluntarily opted not to ride forest trails during deer hunting and small game seasons, recreational OHV riding has become a year-around sport for many. That is why the DNR reminds everyone who visits Minnesota's state forests this fall to always put safety first.

For more information, see the 2009 firearms deer season zone map posted online or call 651-296-6157 or 888-646-6367.