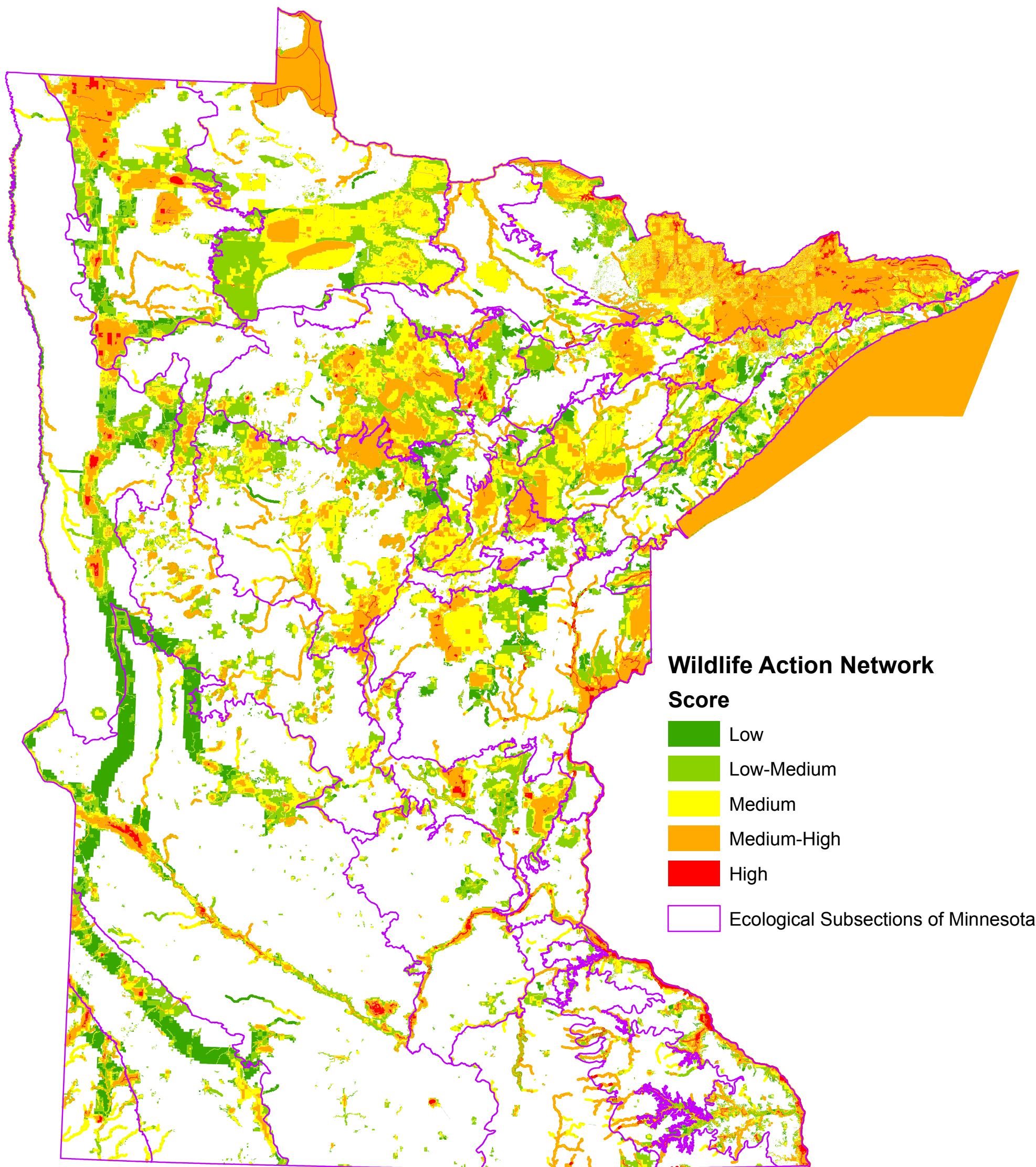


Minnesota's 2015-2025 Wildlife Action Plan

Wildlife Action Network



The Wildlife Action Network is composed of mapped terrestrial and aquatic habitats, buffers, and connectors that represent a diversity of quality habitats that support Species in Greatest Conservation Need (SGCN). Scores are based on five scalable metrics: SGCN population viability scores, SGCN richness, spatially prioritized MN Biological Survey Sites of Biodiversity Significance, ranks of Lakes of Biological Significance, and Stream Indices of Biological Integrity (IBI). Lower scores (green) in a given area indicate the metric scores for any of these five components were either relatively low or zero, while high scores (red) indicate that multiple metrics of high scores overlap. For example, a red area could indicate several good or outstanding SGCN populations and/or high SGCN richness (including species that did not have population maps available) along with a high score from another prioritization layer. See Chapter 1 and Appendix E of the 2015-2025 MN Wildlife Action Plan for more information. The area in northeastern Minnesota delineating a portion of Lake Superior represents Minnesota’s managed area of the lake.

