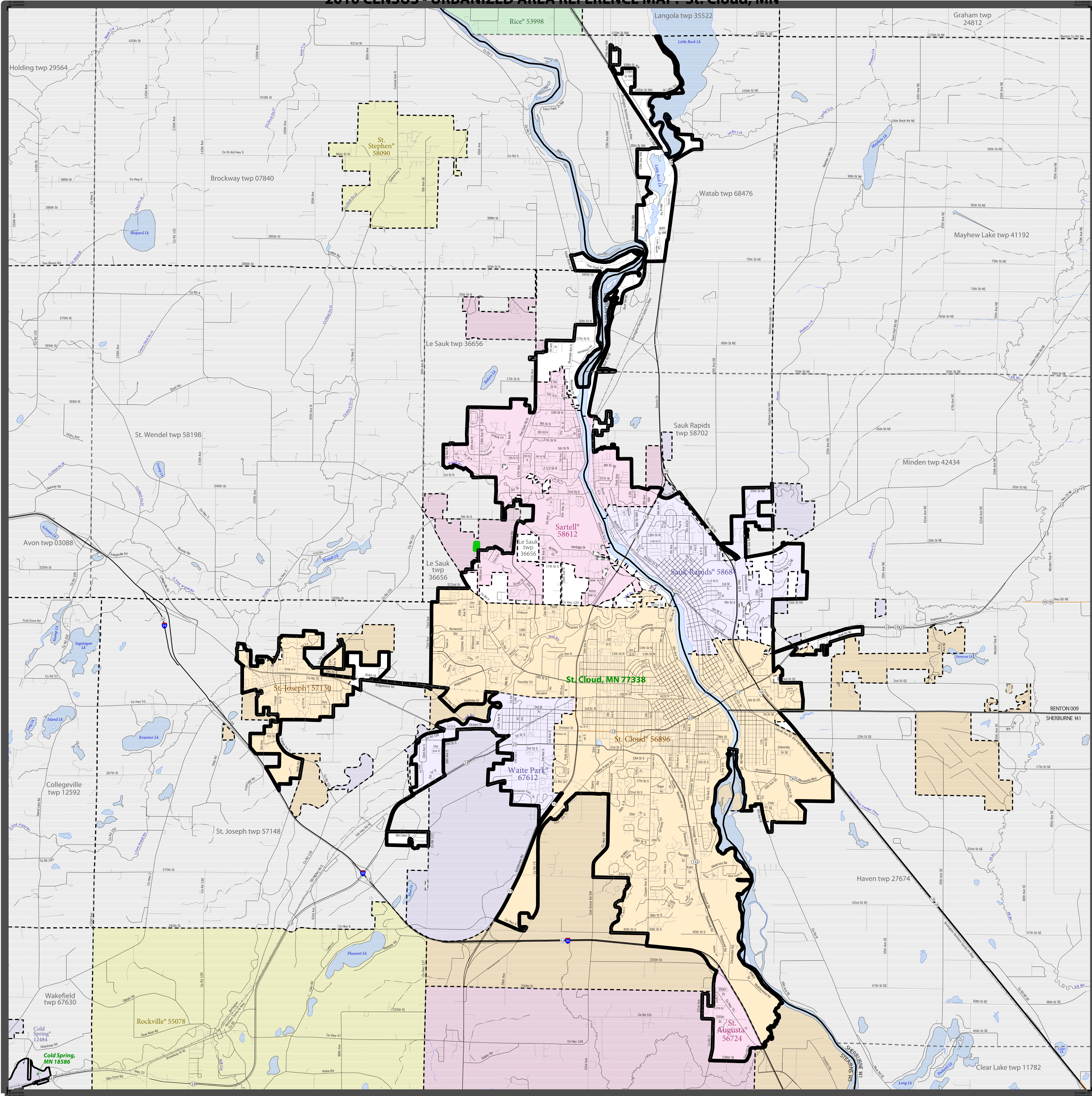


2010 CENSUS - URBANIZED AREA REFERENCE MAP: St. Cloud, MN



SYMBOL DESCRIPTION		LEGEND	
International	--- --	CANADA	
Federal American Indian Reservation	L'ANSE RES 1880	
Off-Reservation Trust Land	T1880	
Urbanized Area	Dover, DE 24580	
Urban Cluster	Toolee, VT 88057	
State (or statistically equivalent entity)	--- --	NEW YORK 36	
County (or statistically equivalent entity)	--- --	ERIE 029	
Minor Civil Division (MCD) ^{1,2}	--- --	Bristol town 07485	
Consolidated City	MILFORD 47500	
Incorporated Place ^{1,3}	Davis 18100	
Census Designated Place (CDP) ²	Incline Village 35100	

DESCRIPTION	SYMBOL	DESCRIPTION	SYMBOL
Interstate	Water Body
U.S. Highway	Military
State Highway	Outside Subject Area
Other Road		
Railroad		
Perennial Stream		
Intermittent Stream		

Where international, state, county, and/or MCD boundaries coincide, the map shows the boundary symbol for only the highest-ranking of these boundaries.

1 A ** following an MCD name denotes a false MCD. A *** following a place name indicates that a false MCD exists with the same name and FIPS code as the place; the false MCD label is not shown.

2 MCD boundaries are shown in the following states in which some or all MCDs function as general-purpose governmental units: Connecticut, Illinois, Indiana, Kansas, Maine, Massachusetts, Michigan, Minnesota, Missouri, Nebraska, New Hampshire, New Jersey, New York, North Dakota, Ohio, Pennsylvania, Rhode Island, South Dakota, Vermont, and Wisconsin. (Note that Illinois and Nebraska have some counties covered by nongovernmental precincts and Missouri has most counties covered by nongovernmental townships.)

3 Place label color corresponds to the place fill color.
Label colors: Davis Davis Davis Davis Davis

SUBJECT AREA COUNTIES ON MAP SHEET
 27009 Benton
 27141 Sherburne
 27145 Stearns

All legal boundaries and names are as of January 1, 2010. Urban areas are based on results from the 2010 Decennial Census. The boundaries shown on this map are for Census Bureau statistical data collection and tabulation purposes only; their depiction and designation for statistical purposes does not constitute a determination of jurisdictional authority or rights of ownership or entitlement.

Geographic Vintage: 2010 Census (reference date: January 1, 2010)
 Data Source: U.S. Census Bureau's MA/TIGER database (TAB10)
 Map Created by Geography Division: March 10, 2012

U.S. DEPARTMENT OF COMMERCE Economics and Statistics Administration U.S. Census Bureau

Projection: Albers Equal Area Conic
 Datum: NAD 83
 Spheroid: GRS 80
 1st Standard Parallel: 44 28 52
 2nd Standard Parallel: 48 24 13
 Central Meridian: 93 21 39
 Latitude of Projection's Origin: 43 30 01
 False Easting: 0
 False Northing: 0

The plotted map scale is 1:43071



PARENT SHEET 1
 Total Sheets: 1
 Index Sheets: 0
 Parent Sheets: 1

UA NAME: St. Cloud, MN
 27009 Benton
 27141 Sherburne
 27145 Stearns
 UA CODE: 77338
 ENTITY TYPE: Urbanized Area (UA)
 ST: Minnesota (27)

United States Census Bureau

2010 CENSUS UA REF MAP (PARENT)
 24107338001