

# Conservation Partners Legacy Grants - Online Applications

Jamie Gangaware

Admin

[List Applications](#)

[Summary Spreadsheet](#)

[Log Out](#)

Project Summary  Project Info  Site Info  Budget Info  Review & Approval  Additional Info  Application Submission

## Project Summary

### Project Name and Contact

Project Name:	<b>Highwood Nature Preserve</b>	Project Manager:	<b>Adam Robbins</b>
Organization Name:	<b>Saint Paul Parks and Recreation</b>	Title:	<b>Environmental Coordinator</b>
Organization Type:	<b>Government</b>	Phone:	<b>651-632-2457</b>
Mailing Address 1:	<b>1100 Hamline Avenue North</b>	Email:	<b>adam.robbins@ci.stpaul.mn.us</b>
Mailing Address 2:			
City:	<b>Saint Paul</b>		
State:	<b>MN</b>		
Zip Code:	<b>55108</b>		

### Project Location Summary

Primary County:	<b>Ramsey</b>	Secondary Land Ownerships:	
Nearest City:			
Project Site Name:	<b>Highwood Nature Preserve</b>		
Primary Land Ownership:	<b>Local</b>		

### Project Activity Summary

Primary Activity:	<b>Enhancement</b>	Primary Habitat Type:	<b>Forest</b>
Additional Activities:		Additional Habitats:	<b>Prairie</b>
Total Project Sites:	<b>1</b>		
Total Project Acres:	<b>13</b>		

### Project Funding Summary

Total Grant Amount Requested:	<b>\$24,000</b>
Total Match Amount Pledged:	<b>\$8,000</b>
Additional Funding:	
Total Project Cost:	<b>\$32,000</b>
Estimated Project Completion Date:	<b>2014-05-15</b>

## Summary

The Highwood Nature Preserve Project will enhance and manage 13.5 acres of native oak woodland, oak savanna, aspen forest, and prairie through invasive species removal and control, prescribed burning, and reforestation efforts. This project will reintroduce fire into this fire-dependent landscape, decrease sedimentation of impaired waterbodies, reduce forest fragmentation by increasing the connectedness of high-quality forests, and improve habitat for fish and wildlife. Several activities listed within the Highwood Park Nature Preserve Management Recommendations plan have been initiated. CPL funding will allow Parks to fast-track the remaining activities identified in the management plan to protect the site's small remnant prairie, its oak woodland, and populations of purple twayblade, a rare woodland orchid. In addition to the direct environmental benefits, restoring the Highwood Nature Preserve will lead to habitat and landscape conservation training for Saint Paul citizens.

## **Problem Statement**

The site is comprised of 7.5 acres of high quality and disturbed oak woodland, 5.5 acres of remnant and reconstructed prairie and savanna, and 1.5 acres of aspen forest; as identified through the Minnesota Land Cover Classification System. Currently, native plant communities within the Highwood Nature Preserve are suffering from invasive species encroachment. Within the woodlands, invasive species are beginning to out-compete native species, affecting our ability to sustain the unique and rare species on site. The density of invasive species is reducing groundlayer diversity – negatively affecting our ability to keep water on the landscape and ultimately causing erosion and sediment control problems. Pig’s Eye Lake and the Mississippi River are within 1,000 feet of the Highwood Nature Preserve. Enhancement of this property, by meeting restoration targets as identified within the Highwood Park Nature Preserve Management Recommendations plan, will decrease stormwater runoff that leads directly to these critical areas, protecting the wetland-associated watershed and shoreland, and will protect these high-quality native plant communities.

## **Project Objectives**

Under this proposal, contractors will prepare these lands for sustainability through invasive species removal, native seed collection, fuel load reduction, burn break identification, and assistance with initial prescribed burning. We will utilize community volunteers and Conservation Corps Minnesota in enhancement efforts to include exotic species control, native plant installation, and site monitoring. This work will tie together existing and past project work, providing non-fragmented, contiguous management areas. We will keep water on the landscape, protect watershed-associated wetlands, and critical lake and river habitat. Our results will include: total prescribed burn acreage, documentation of the location of twayblade plants inventoried, completion of a wildlife survey, total cubic yards of biomass produced and used as alternative fuel at District Energy St. Paul, number of volunteers engaged in enhancement activities, total acres enhanced woodland and prairie, and numbers of trees and shrubs planted. Additionally, local genotype seed will be collected from the remnant prairie on site, propagated, and replanted on site to enhance and extend the footprint of the remnant – total numbers of plants installed will be recorded. Volunteer opportunities will be directly linked to habitat enhancement at Highwood. Parks and Recreation will engage individuals and community groups through our EcoStewards program – in 2009, we recorded more than 4,100 volunteer hours in natural resource enhancement efforts. Utilization of Conservation Corps Minnesota in project work will strengthen our outreach efforts, and provide skilled training to the youth and young adults in the program.

## **Methods**

**Woody species control** – Fall prescribed burning will begin to control small seedling and sapling buckthorn that has infested several areas within the Preserve. Small material that survives the prescribed burning activities will be controlled with a fall foliar herbicide application the following year when desirable native species have gone dormant. Large and medium sized material will be cut using a chainsaw, or brush saw as possible, and all stumps will be treated with herbicide. Any re-sprouting material will be re-cut and treated in the next growing season. All medium to large woody biomass will be removed from the site, as practical with volunteer labor, and hauled to Ever-Green Energy for processing to be utilized as an alternative fuel source at District Energy St. Paul. **Herbaceous species control** – Integrated pest management techniques will be used to control herbaceous weeds within the Preserve. Depending on the targeted species, mechanical controls (mowing, cutting, pulling) will keep plants from seeding out to limit herbicide use on site. Spring prescribed burning at some key locations will begin to control cool season species. Depending on a species’ growth habit, we will time herbicide treatments to coincide with weed growth to provide optimal weed control. **Prescribed burning** – Parks will develop distinct burn units on site and, during the course of the grant period, burn each unit. The grassland areas of the Preserve have been successfully burned in the past, but the woodland units have not and will greatly benefit from this activity to control woody plant material. A prescribed burn contractor, Conservation Corps Minnesota, and Parks and Recreation staff will work together to accomplish woody and herbaceous species control and prescribed burns. **Reforestation efforts** - Will include local ecotype acorn collection, direct seeding, and sowing; installation of MN DNR Nursery seedlings using a dibble bar; and installation of bareroot whips and lightly branched trees and shrubs, as available, to provide forest stratification in areas of low diversity. Seedlings and whips will be planted at a density of

around 200 trees per acre to encourage the survival and ultimate maturation of 25 to 70 trees per acre. This planting density will mimic the planting program established by Three Rivers Park District. Planting will be accomplished with the assistance of Conservation Corps Minnesota and community volunteers.

### Project Timeline

Time Frame	Goal
1/3 site per grant year	Prescribed burning
July 2011	Inventory twayblade populations
2011 - December 2013	Invasive trees and shrubs controlled
2011 - May 2014	Invasive herbaceous weeds controlled
2011 - May 2014	Complete wildlife survey
2011 - May 2014	200 volunteers engaged
2011 - May 2014	1500 trees and shrubs planted
2011 - 2013	Collect local genotype seed
2012 - 2014	Propagate and plant local genotype plugs

Identify short and long term maintenance and management work required to sustain this project and source(s) of funding

Work needed	Who is responsible	Funding source
Woody species control	City	local & in-kind
Herbaceous species control	City	local & in-kind
Prescribed burning	City	local & in-kind

# Conservation Partners Legacy Grants - Online Applications

Jamie Gangaware

Admin

[List Applications](#)

[Summary Spreadsheet](#)

[Log Out](#)

Project Summary

Project Info

Site Info

Budget Info

Review & Approval

Additional Info

Application Submission

## Project Information

Answer each of the following questions in 1000 characters or less; descriptions/definitions are available in the [Criteria and Scoring Table](#).

**1. Describe the local support for this project.**

Funding this proposal would allow Saint Paul Parks to not only engage the Conservation Corps Minnesota Young Adult Program with meaningful natural resources-based job training opportunities, but to also involve the Corp's Youth Outdoors (YO) Program, a joint City of Saint Paul/Conservation Corps partnership on this project. Additionally, we will solicit volunteers from the surrounding neighborhood and the greater Saint Paul community through press releases, on-site publicity, postcard mailings, and through partnering agencies. The Saint Paul City Council, affected district councils, and district council committees will be notified and encouraged to participate in the marketing of this program.

**2. Describe the degree of collaboration for this project.**

Great River Greening authored the management plan for Highwood Nature Preserve and continues to provide advice regarding site management. Parks and Recreation works with Conservation Corps Minnesota on an annual basis to provide training locations for new corpmembers. Over the last five years, Highwood has been a field training location.

**3. Describe any urgency associated with this project.**

Delaying this project will allow for further degradation of the remnant prairie at Highwood and will threaten twayblade habitat. Delaying this project will also result in an increased density of invasive, cool season species that will negatively impact our ability to utilize prescribed burning as a management tool within the woodland ecosystems.

**4. Discuss if there are multiple benefits resulting from your project, identifying those species, habitats, etc.**

Enhancement of this property will decrease stormwater runoff that leads directly to Pig's Eye Lake and the Mississippi River, protecting the wetland-associated watershed and shoreland. Enhancement of the forest communities at Highwood will protect rare plant species and provide an opportunity to manage the site in a more comprehensive way. Parks and Recreation currently focuses resources on managing and maintaining the prairie ecosystem on site. Working within the woodlands will allow us to more comprehensively manage the site as one contiguous management unit.

**5. Discuss the habitat benefits resulting from your project.**

The remnant prairie is host to 15 recorded native grass and sedge species and 62 recorded native forb species. Although small, 0.1 acre, the remnant prairie is bordered by a 5.5 acre prairie reconstruction, completed with Metro Greenways funding in 2005. This 5.6 acre prairie complex now provides key habitat to wildlife. A comprehensive wildlife survey has not been conducted for Highwood Preserve, but the management plan indicates the presence of eastern meadowlark, indigo bunting, great crested flycatcher, red-eyed vireo, and pocket gophers on site and bald eagle, great blue heron, and great white egret overhead. Improving the native, woodland plant communities at the Preserve will increase this species diversity and density. Wildlife species will be further surveyed during the grant period.

**6. Describe how your project is consistent with sound conservation science.**

Parks and Recreation will follow the guidance of Great River Greening ecologists as outlined in the Highwood Park Nature Preserve Management Recommendations plan. NRCS and BWSR technical native vegetation establishment resources will be referenced to address bioengineering and erosion control best management practices. MN DNR

ecologists will be consulted for assistance with proper prescribed burn timing to protect unique and rare species.

**7. Indicate if your project is adjacent to protected lands, describing those lands (ownership, public access, etc.)**

City, County and State have been acquiring sensitive bluffland, adjacent and connected to the preserve, to create a contiguous tract of protected public land adjacent to the Mississippi River. Additional parcels are added as they become available. Access to these parcels is currently limited due as they are not developed for public use.

**8. Discuss if there is full funding secured for this project and the sources of funding.**

If the project is fully funded through the CPL grant program, management goals for this project will be accomplished using a combination of CPL funding, City funds, and volunteer labor.

**9. Discuss if CPL Grant funds will supplement or supplant existing funding. Discuss how these CPL funds will impact your organization's current budget.**

CPL grant funds will supplement existing funding. CPL funding will allow Parks and Recreation to fully fund enhancement of the Highwood Nature Preserve.

**10. Describe public access at project site for hunting and fishing, identifying all open seasons.**

Public hunting is not allowed on city parkland per city ordinance and there are no waterbodies on the preserve to support fishing.

**11. Describe the sustainability of your project.**

Following the grant period, Parks will modify the management activities already occurring within adjacent land parcels to include new acreage created under this program. A commitment will be made by Parks and Recreation to keep the Highwood Nature Preserve on a three-year burn cycle. Volunteers will be an integral part of site enhancement activities and maintenance into the future.

**12. Discuss use of native vegetation (if applicable).**

We will use seed sources within or adjacent to the same ecoregion, to the extent possible, based on the Minnesota Ecological Sections and Subsections map. We will follow BWSR's Native Vegetation Establishment and Enhancement Guidelines document, and use seed mixes that are an appropriate match for the specific site conditions. Woody plant material will be purchased through the MN DNR Nursery or grown from locally collected seed (acorns). Only local ecotype plant material will be used.

**13. Discuss your budget and why it is cost effective.**

This project will allow Park and Recreation to meet our management goals at a rate of approximately \$1,775 per acre. This amount includes invasive species control, prescribed burning, erosion and sediment control, and reforestation efforts across 13.5 acres. As possible, 75 percent of this funding will be used to engage Conservation Corps Minnesota crews in this project.

**14. Describe your organization's ability to successfully complete this work, including experience in the area of interest and ability to successfully implement the proposed project. Include descriptions of your most recent grant experience and if the expected outcomes were achieved.**

Parks has a proven track record of managing ecological restoration projects. Most recently, we have initiated our third phase of biomass removal at Indian Mounds Regional Park, funded through the MN DNR Woody Biomass Removal program. Due to the success of our initial two phases of project work on city-owned land, the MN DNR has requested that Saint Paul Parks and Recreation manage the third phase on DNR-owned land within the park (phase three was initiated on 9/15/2010). During the first two phases of work, Parks removed over 388 tons of biomass from the park, across 11.7 acres, utilizing over 500 volunteers; while matching funds from the RWMWD covered plant material and erosion and sediment control materials for restoration following biomass removal. Over the last five years, the Natural Resources program within Parks has received up to \$500,000 in grant funding annually, from various sources, to directly support ecological restoration and enhancement of our natural areas.

**15. Discuss how your project supports landscape level plans. Use additional sources for information if needed or available.**

In 1995 the city of Saint Paul Department of Planning and Economic Development produced a development plan for the Highwood neighborhood, which called for wooded areas, especially along the fragile bluff, to be preserved and protected. The Preserve is located within the area covered by the Pig's Eye Greenscape planning project. The Pig's Eye Greenscape was a collaborative project to analyze the natural resources in a part of Saint Paul stretching from Swede Hollow Park to the Fish Creek County Open Space. The Highwood Preserve offers an opportunity to improve the ecological quality of an area that helps connect natural vegetation along the bluffs of this part of Saint Paul. (Highwood Park Nature Preserve Management Recommendations, Great River Greening). The project area is approximately 1000 feet from Pig's Eye Lake, identified by The Nature Conservancy as a priority conservation area (The Prairie-Forest Border Ecoregion: A Conservation Plan, The Nature Conservancy).

**16. Discuss how your project supports species plans. Use additional sources for information if needed or available.**

According to Tomorrow's Habitat for the Wild and Rare, "149 Species in Greatest Conservation Need (SGCN) are known or predicted to occur within the St. Paul Baldwin Plains and Moraines, the 2nd most of all subsections in MN. These SGCN include 74 species that are federal or state endangered, threatened, or of special concern."

**17. Discuss how your project conforms to the Statewide Conservation and Preservation Plan.**

Recommendations fulfilled by this program: Habitat 2: Protect critical shorelands of streams and lakes. – Mississippi River & Pig's Eye Lake Habitat 5: Restore land, wetlands and wetland-associated watersheds. Habitat 7: Keep water on the landscape Habitat 13: Habitat and landscape conservation and training programs for all citizens. – Utilization of Conservation Corps Minnesota in project work, community volunteer involvement in enhancement efforts. The plan states that, "forest...parcelization can lead to forest fragmentation, or the creation of many small forest "islands" separated by nonforested areas. Fragmentation erodes the functioning of the remaining natural system, reducing the forest's resilience to disturbance and change including climate change and invasive species. Fragmentation also endangers habitat for native wildlife species." This project will provide non-fragmented, contiguous management areas within the Preserve.

**18. Discuss how your project conforms to the State Wildlife Action Plan (if applicable).**

According to Tomorrow's Habitat for the Wild and Rare, "149 Species in Greatest Conservation Need (SGCN) are known or predicted to occur within the St. Paul Baldwin Plains and Moraines, the 2nd most of all subsections in MN. These SGCN include 74 species that are federal or state endangered, threatened, or of special concern." Of the 36 SGCN found in oak savanna habitats, 11 of which require oak savanna to survive. Within the St Paul Baldwin Plains and Moraines, oak savanna habitats have shrunk from approximately half of the landcover in the 1890s to under 3 percent in the 1990s. As a result of the significant loss and degradation of this habitat, the Plan identified oak savanna as one of several key habitats in which to focus management efforts. This project meets three of the four actions outlined in the plan for this habitat: manage invasive species, use prescribed fire and other practices to maintain savanna, and encourage oak savanna restoration efforts.



# Conservation Partners Legacy Grants - Online Applications

Jamie Gangaware

Admin

[List Applications](#)

[Summary Spreadsheet](#)

[Log Out](#)

Project Summary

Project Info

Site Info

Budget Info

Review & Approval

Additional Info

Application Submission

## Budget Information

### Organization's Fiscal Contact Information

Name:	<b>Adam Robbins</b>	Street Address 1:	<b>1100 Hamline Avenue</b>
Title:	<b>Environmental Coordinator</b>	Street Address 2:	
Email:	<b>adam.robbins@ci.stpaul.mn.us</b>	City:	<b>Saint Paul</b>
Phone:	<b>651-632-2457</b>	State:	<b>MN</b>
		Zip Code:	<b>55108</b>

### Budget Subtotals

Budget Item	Grant	Match	Total		
Personnel					
Contracts	<b>\$22,000</b>	<b>\$6,400</b>	<b>\$28,400</b>		
Fee Acquisition with PILT					
Fee Acquisition without PILT					
Easement Acquisition					
Easement Stewardship				In-kind Total	Cash Total
Travel (in-state)				<b>\$6,400</b>	<b>\$1,600</b>
Professional Services					
DNR Land Acquisition Cost					
Equipment/Tools/Supplies	<b>\$2,000</b>	<b>\$1,600</b>	<b>\$3,600</b>		
Additional Budget Items					
<b>Total:</b>	<b>\$24,000</b>	<b>\$8,000</b>	<b>\$32,000</b>		

### Details

#### Contracts

Contractor Name	Contracted Work	Amount	Grant/Match	In-kind/Cash
<b>Conservation Corps Minnesota</b>	<b>Exotic removal, burn, planting</b>	<b>\$18,000</b>	<b>Grant</b>	
<b>Natural Resources Restoration</b>	<b>Exotic removal, burn, planting</b>	<b>\$4,000</b>	<b>Grant</b>	
<b>Community volunteers</b>	<b>Exotic species removal</b>	<b>\$4,000</b>	<b>Match</b>	<b>In-kind</b>
<b>City staff</b>	<b>Exotic removal, burn, planting</b>	<b>\$2,400</b>	<b>Match</b>	<b>In-kind</b>
Totals	Grant: \$22,000 Match: \$6,400	Total: \$28,400		

#### Equipment/Tools/Supplies

Item	Purpose	Amount	Grant/Match	In-kind/Cash
<b>Herbicide</b>	<b>Exotic species control</b>	<b>\$2,000</b>	<b>Grant</b>	
<b>Plant material</b>	<b>Native plant material</b>	<b>\$1,600</b>	<b>Match</b>	<b>Cash</b>
Totals	Grant: \$2,000 Match: \$1,600	Total: \$3,600		

# Conservation Partners Legacy Grants - Online Applications

Jamie Gangaware

Admin

[List Applications](#)

[Summary Spreadsheet](#)

[Log Out](#)

Project Summary

Project Info

Site Info

Budget Info

Review & Approval

Additional Info

Application Submission

## Site Information

\*you may group your project sites together as long as land ownership, activity and habitat information is the same for the land manager

### Land Manager

Name:

**Michael Hahm**

Phone:

**651-266-6409**

Organization:

**City of Saint Paul, Dept  
of Parks and Recreation**

Email:

**michael.hahm@ci.stpaul.mn.us**

Title:

**Director**

### Site Information

Land Ownership:

**Local**

Acres:

**13**

Site Name(s):

**Highwood Nature  
Preserve**

Click here to [View Site Map](#)

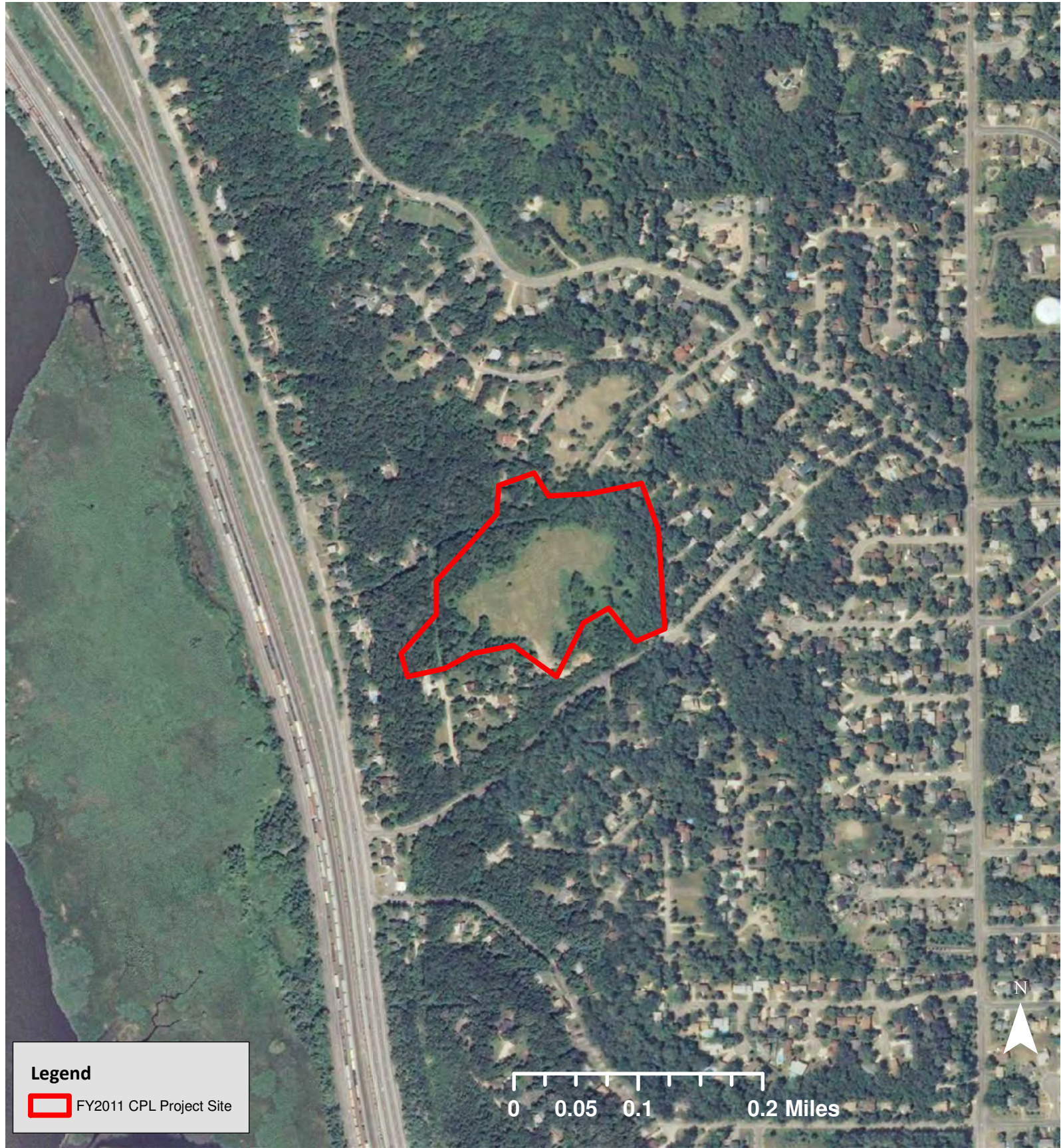
Activity:

**Enhancement**


Habitat:

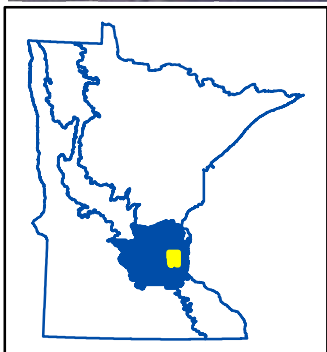
**Forest**





**Legend**

 FY2011 CPL Project Site



**CPL FY11-100**  
**Highwood Nature Preserve**  
**St. Paul Parks and Recreation**  
**Ramsey County**  
**LSOHC Metro Urbanizing Area**  
**Planning Section**





# Conservation Partners Legacy Grants - Online Applications

Jamie Gangaware

Admin

List Applications

Summary Spreadsheet

Log Out

● Project Summary

● Project Info

● Site Info

● Budget Info

● **Review & Approval**

● Additional Info

● Application Submission

## Project Review and Approval

A Project Review and Approval Form must be completed by each Land Manager named within the Site Info tab and Land Managers only need to complete one form for all sites they manage. Submitting this form fulfills the following requirements:

- Provides the results of the Natural Heritage Database Review,
- Allows for technical review of the project by the Land Manager, and
- Verifies that the public agency approves the work to be done (or acquisition) on land they manage.

You, as the applicant, are responsible for meeting with the Land Manager and receiving a completed Project Review and Approval Form. This form must contain an original signature from the Land Manager and you must upload it below as a PDF.

Each project will require at least one Project Review and Approval form. You may attach up to 4 forms on this page, but if you need more room you may attach up to three more on the "Additional Info" tab. If your project is working under 3 Land Managers, you must receive and submit a form from each manager.

No late Project Review and Approval Forms will be accepted. Applications lacking any necessary approval forms will be deemed incomplete and not considered for funding.

### Answer the following questions, then attach the form(s)

Yes **Natural Heritage elements were found within my project site(s):**

**Name the site(s) and their associated Land Managers:**

Highwood Nature Preserve - City of Saint Paul, Department of Parks and Recreation

**Name the elements found:**

**Discuss any interaction or impact to these elements and the recommended mitigation / avoidance measures you will take within your project to protect these elements:**

[REDACTED] To minimize potential impact, no foliar application of herbicide will be used unless it is when this species is dormant. Activities that could disrupt this species will be delayed until the plant is dormant.

### Project Review and Approval Forms

[Uploaded Form 1](#)

[Uploaded Form 2](#)



Conservation Partners Legacy Grant Program  
Natural Heritage Database Review  
September 10, 2010

Adam Robbins, City of St. Paul Natural Resource Manager,

We have received your request for a Natural Heritage Database Review specific to your Conservation Partners Legacy Grant application, titled Highwood Nature Preserve. The following information is the result of that review, completed for the project location(s) within your proposed project.

As it is understood, the project above is to enhance native oak woodland and oak savanna in the preserve, which will include invasive species removal and control, prescribed burning and reforestation.

There are 5 records from within one mile of your project site, with only one directly within your project site. Of the 4 remaining records, two are aquatic species, one is a wetland site and one is a terrestrial habitat type, all of which are not associated with your upland work and direct impacts are not a concern. Burning activities impacting the wetland record [REDACTED] is not a concern due to the small overall area of the project site (12 acres) and the proximity of this record to a large residential area. Proper procedures used to minimize smoke impacts to the homes will result in protection [REDACTED] site during burning operations.

The one record found within your project site is the [REDACTED]. Care should be taken when using herbicide to hit target plants only. To minimize potential impacts, no foliar application of herbicide should be used unless it is used when native plants are dormant. Activities that could disrupt this species when blooming or flowering should be delayed until the plant is dormant.

Please note:

- This review only applies to the Conservation Partners Legacy Grant Program application referenced above.
- This information has no bearing on any related permits or projects not covered under the request for review.
- This information will not be valid after March 1, 2011. The only use of this data is to record potential impacts and minimization or avoidance techniques for any Natural Heritage Database records found in or within 1 mile of the listed project site(s).

Please contact CPL Grant staff at [LSCPLGrants@state.mn.us](mailto:LSCPLGrants@state.mn.us) with any questions. Thank you for your interest in the CPL Grant Program.

## CPL Project Review and Approval Form

**REVIEWER INFORMATION:**

Land manager/ easement holder name:	City of Saint Paul, Department of Parks and Recreation
Agency:	City of Saint Paul, Department of Parks and Recreation
Title:	Michael Hahm, Director
Phone:	651.266.6409
Email:	michael.hahm@ci.stpaul.mn.us

**PROJECT INFORMATION:**

Project Name:	Highwood Nature Preserve
Contact Person:	Adam Robbins
Organization:	Department of Parks and Recreation
Email:	adam.robbins@ci.stpaul.mn.us

Please check the appropriate boxes:

- I have read the application and discussed this proposed project with the above listed Organization Contact Person.
- For work on easements, the private landowner has been contacted and has given support and approval for this project.

**I have performed a Natural Heritage Database review and found:**

- this project to have no features within one mile.
- this project to have features within one mile, but project is not likely to adversely affect those features. I have listed the features below and recommended the following minimization strategy:

- this project is likely to adversely affect Natural Heritage features. I feel that this project is important and should be forwarded to DNR Ecological Resources staff for further review.

I do not have access to the Natural Features database and will forward this completed form to DNR by Friday, August 27<sup>th</sup> 2010 to [CPL Staff at LSCPLGrants.DNR@state.mn.us](mailto:CPLStaff@LSCPLGrants.DNR.state.mn.us) to complete the Natural Heritage Review.

I have discussed what role my office will be expected to have in this project and find that the project, as described will require:

- minimal or no involvement from my office for completion.
- a commitment of involvement by staff that is reasonable and can be accomplished with current staffing levels and workload.
- an amount of staff involvement that cannot be committed during the project time period with current staffing levels. Unless additional staffing can be committed from other offices, Divisions or appropriate partners, I feel this project cannot be completed within the project timeline to our desired standards.

I have discussed permits and applications that the applicant may be responsible for using the Working on DNR Lands and Working on Public Lands, or Working on Private Lands documents.



## CPL Project Review and Approval Form

**For Acquisitions Only:**

- This project is for an acquisition to be transferred to a public agency by applicant:
  - I have discussed any required Initial Development (facilities, habitat, etc.) work that is required before the transfer with the applicant.
  - I have discussed all applicable costs of those developments and what party is responsible for those costs.

**Complete the following cost tables (required work to bring to agency standards).**

Habitat Development	# Acres	Cost/ Acre	Total	Funding Source	Applicant is responsible for:
Prairie Grassland					Choose
Forest/ Woody Cover					Choose
Wetland					Choose
<b>Totals</b>					

Facility Development	Cost	Funding Source	Applicant is responsible for:
Boundary Survey			Choose
Posting/ Fencing			Choose
Wood Routed Sign			Choose
Access Roads and Trails			Choose
User Facilities, Access, Parking Lots			Choose
Well Sealing/ Site Clean-up			Choose
<b>Total</b>			

**Upon final review of this project:**

- I find this project to be consistent with sound conservation science. This work will benefit area fish, game and wildlife by restoring, enhancing or protecting forests, wetlands, prairies and habitat and is consistent with the management or stewardship plan for this land. (APPROVAL)
- I find that this project does not follow the management or stewardship plan for this land and does not fit within the long range goals for this land at this time on the local level. (DECLINE)
- I find that this project should be sent up to a higher level within the agency for further review and decision. I have forwarded the Project Planning Form and this Review and Approval Form for further review to:

Name:	Michael Hahm	Phone:	651.266.6409
-------	--------------	--------	--------------

By checking this box and signing my name below I certify that I have met with the above applicant and discussed the proposed project and have provided feedback to the applicant. I understand I must provide this document as a PDF with my original signature on it to the applicant to submit a complete application.

Name: \_\_\_\_\_

Date: \_\_\_\_\_

Comments:

# Conservation Partners Legacy Grants - Online Applications

Jamie Gangaware

Admin

[List Applications](#)

[Summary Spreadsheet](#)

[Log Out](#)

Project Summary

Project Info

Site Info

Budget Info

Review & Approval

Additional Info

Application Submission

## Additional Information

List any additional details about your project here. Include your organization's history or charter to receive private contributions for local conservation or habitat projects. This is not required.

## Supplemental Documents

If you / your project does not need to upload any of these documents, you may leave these upload boxes empty.

Upload additional information here, limited to Partner Commitment Letters, Letters of Support, Easement information, etc. You may email easement information only if it exceeds size limit while trying to submit the application; all other supporting documentation must be uploaded. Reference CPL Application # and name when emailing (provided upon application submission) or your email will be returned. Send emails to [LSCPLGrants.DNR@state.mn.us](mailto:LSCPLGrants.DNR@state.mn.us)

# Conservation Partners Legacy Grants - Online Applications

Jamie Gangaware

Admin

[List Applications](#)

[Summary Spreadsheet](#)

[Log Out](#)

Project Summary

Project Info

Site Info

Budget Info

Review & Approval

Additional Info

Application Submission

## Final Application Submission

This completes your CPL Grant Application. Please take the time to revisit the previous sections and make sure you have entered everything completely and correctly. Once you hit the submit button below, you will not be able to return to this application to make changes.

**I certify that I have read the Conservation Partners Legacy Grants Program Request for Proposal, Program Manual and other program documents, and have discussed this project with the appropriate public land manager, or private landowner and easement holder.**

**I certify I am authorized to apply for and manage these grant and match funds, and the project work by the organization or agency listed below. I certify this organization to have the financial capability to compete this project and that it will comply with all applicable laws and regulations.**

**I certify that all of the information contained in the application is correct as of the time of the submission. If anything should change, I will contact CPL Grant Staff immediately to make corrections.**

**I certify that if funded I will give consideration to and make timely written contact to Minnesota Conservation Corps or its successor for consideration of possible use of their services to contract for restoration and enhancement services. I will provide CPL staff a copy of that written contact within 10 days after the execution of my grant, should I be awarded.**

**I certify that I am aware at least one Project Review and Approval form is required for every application and I must submit all completed forms by uploading them into this application. I have attached one form as necessary for each different Land Manager within my project.**

**I am aware that by typing my name in the box below, I am applying my signature to this online document.**

Signature:

**Adam Robbins**

Organization / Agency:

**City of Saint Paul, Dept  
of Parks and Recreation**

Title:

**Environmental  
Coordinator**

Date:

**2010-09-16**



Proj ID	Organization Name	Project Name	Technical Review Committee Scoring Comments	Amount Requested	Score	Technical Review Committee Final Rank Comments	Regional Comments	Meets Regional Plan?	Rank	Region	Division Director's Comments
100	Saint Paul Parks and Recreation	Highwood Nature Preserve	Wildlife survey and plant survey--is it part of this? Not in budget--other funding? Good to see biomass reference. Nice to see fire aspect, if can get it to go would be great. Is this sustainable, especially regular burning, with this location? Like incorporating the direct seeding. Cost breakdown good. Good public education opportunity. No hunting or fishing.	\$24,000	129	No hunting/fishing allowable, but allows access. Not much else in Metro.	Building on existing work. Rare species noted. Water quality and habitat benefits. This is a "close to people" opportunity to experience nature. Rank #8 /12	Y	L	3	Meets regional plan but low priority. Has rare spp. Makes case for special plant communities, unlike other projects like this one. Good mention of plants and special features. Lowest priority to fund of recommended applications.

**General ranking comments- all habitat projects**

All are good projects, meet goals of program. All should move forward.	All could have had better partnerships--go to NGOs for \$\$ and support.	County projects--tree planting: is it supplanting? Are these over and above regular funding?	Land purchases have more urgency than plantings.	No fluff in the costs for any of these.	If need to cut, spread \$\$ out among all applicants.
--	--	--	--	---	---

St Paul\_100\_Highwood Nature Preserve

	1)Amount of Habitat	2)Local Support	3)Degree of Collaboration	4)Urgency	5)Multiple Benefits	6)Habitat Benefits	7)Sound Conservation Science	8)Adjacent to Protected Lands	9)Full Funding of Project	10)Supplants Existing Funding	11)Public Access for Hunting and Fishing	12)Sustainability	13)Use of Native Plant Materials	14)Budget and Cost Effectiveness
	2.00	9.00	9.00	7.00	8.00	8.00	9.00	8.00	8.00	9.00	1.00	8.00	10.00	7.00
	5.00	7.00	6.00	4.00	5.00	7.00	10.00	4.00	9.00	5.00	1.00	7.00	10.00	9.00
	6.00	7.00	8.00	6.00	6.00	8.00	8.00	6.00	8.00	5.00	5.00	6.00	9.00	8.00
	9.00	7.00	7.00	8.00	5.00	6.00	9.00	2.00	8.00	8.00	1.00	4.00	9.00	9.00
	1.00	6.00	6.00	2.00	6.00	6.00	7.00	7.00	6.00	5.00	1.00	4.00	8.00	8.00
<b>AVERAGES</b>	<b>4.60</b>	<b>7.20</b>	<b>7.20</b>	<b>5.40</b>	<b>6.00</b>	<b>7.00</b>	<b>8.60</b>	<b>5.40</b>	<b>7.80</b>	<b>6.40</b>	<b>1.80</b>	<b>5.80</b>	<b>9.20</b>	<b>8.20</b>
<b>TOTAL SCORE</b>	<b>128.80</b>													

15)Capacity to Successfully Complete Work	16)Supports Existing Landscape Level Plans	17)Supports Species Plans	18)Conforms to Statewide Conservation and Preservation Plan	19)Conforms to State Wildlife Action Plan
9.00	8.00	9.00	9.00	9.00
7.00	8.00	7.00	8.00	5.00
7.00	7.00	7.00	8.00	7.00
9.00	8.00	9.00	7.00	7.00
9.00	8.00	6.00	7.00	6.00
<b>8.20</b>	<b>7.80</b>	<b>7.60</b>	<b>7.80</b>	<b>6.80</b>