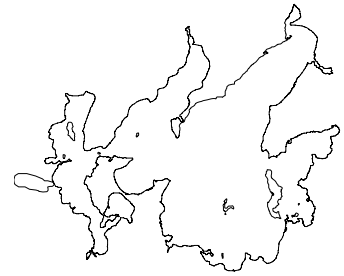




**Leech Lake Update 7/25/2008**  
 Walker Area Fisheries Office  
 07316 State Hwy. 371 NW  
 Walker, MN 56484  
 218-547-1683

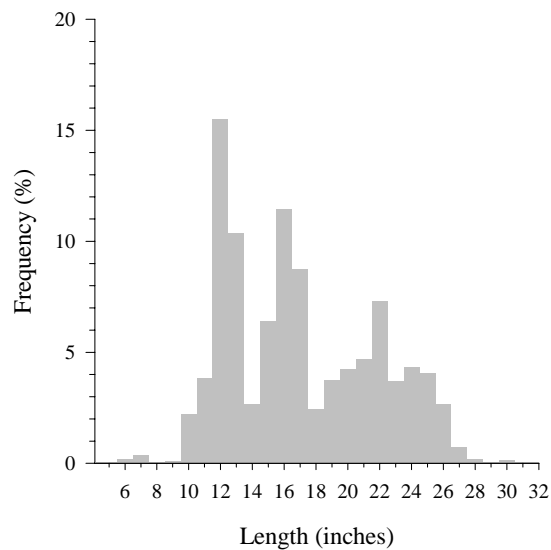
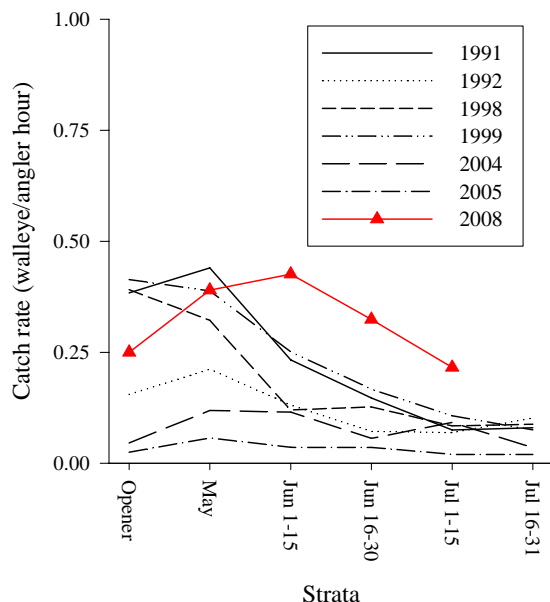


Greetings!

This update is part of a series of reports the Minnesota Department of Natural Resources (DNR) is sending to Leech Lake area resorts, businesses and others interested in DNR activities on Leech Lake. The goal of these messages is to keep you up to date with our findings and current activities on the lake. All updates are available by visiting <http://www.dnr.state.mn.us/areas/fisheries/walker/index.html>. Feel free to contact our office if you have any questions or comments, or if you would like to be added to the mailing list.

### 2008 Fishing Season – Preliminary Findings

- Walleye fishing on Leech Lake has not just improved... Leech Lake anglers have reported that fishing has been great in 2008!
- Walleye catch rates across all anglers (below) have been well above average thus far and walleye of all sizes (6 to 30 inches) have been reported during this year's creel survey.
- Those targeting walleye have averaged 1.06 walleye/hour since the opener, which represents extremely good fishing.
- Anglers considering staying on Leech Lake should contact their favorite resort for availability, or contact the Walker Area Chamber of Commerce ([www.leech-lake.com](http://www.leech-lake.com)) for a list of resorts and other accommodations.



Walleye catch rates across all anglers by survey time period (left) and the pooled size distributions of harvested and released walleye (right) from opening weekend (Opener) through mid-July, 2008.

If you have questions or comments, please contact:

Doug Schultz ([doug.schultz@dnr.state.mn.us](mailto:doug.schultz@dnr.state.mn.us))

or

Harlan Fierstine ([harlan.fierstine@dnr.state.mn.us](mailto:harlan.fierstine@dnr.state.mn.us))