

## Rainbow and Brown Trout Fishing

The Clearwater River is stocked annually with stream trout. Catchable size brown (6 to 8 inches) and rainbow (8 to 11 inches) trout are generally stocked in early May with a second stocking in June.



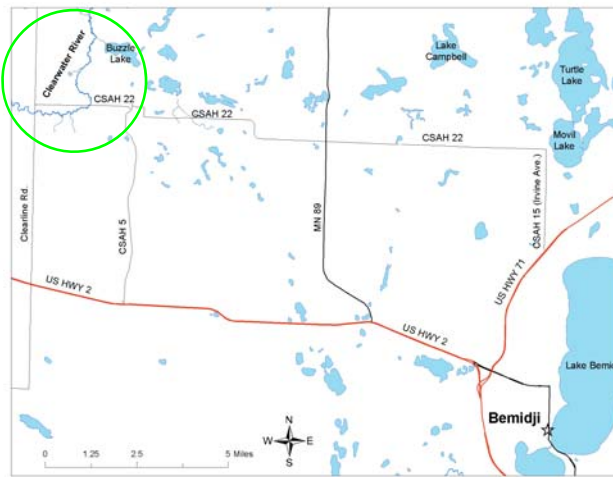
A wheelchair-accessible boardwalk

was built in 2001 to provide stream access from four fishing platforms.

There is a parking lot on the north side of CSAH 22 to access the boardwalk.

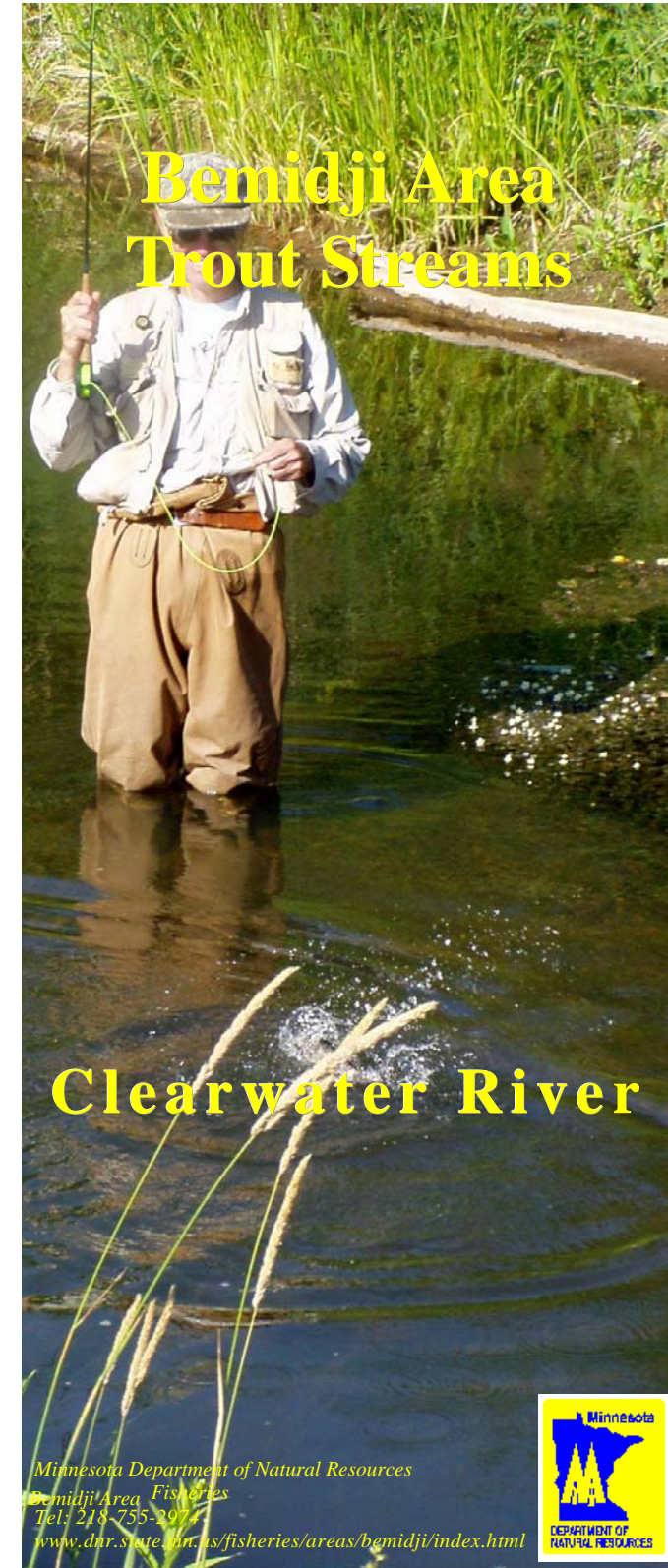


Anglers can expect to catch brown and rainbow trout up to 12 inches, with the opportunity to catch fish up to 15 inches.



Designated trout waters of the Clearwater River lie in western Beltrami County approximately 15 miles northwest of Bemidji. From Bemidji, take US HWY 2 west and turn north on Beltrami CSAH 5. Take this road 5.7 miles north to CSAH 22. Turn west on CSAH 22 and continue 1.1 miles to the river.

In addition to 3.6 miles of stream on public land, trout fishing easements that allow anglers to walk on the stream bank within 66 feet of the center of the stream are in place along 2.7 miles of stream (see map). Note that these easements only allow fishing and other activities such as camping and hunting are not allowed. Signs are in place to indicate the angler access corridor and define where private property begins. Please respect private property and be a good steward of your stream resources.



Minnesota Department of Natural Resources  
Bemidji Area Fisheries  
Tel: 218-755-2977  
[www.dnr.state.mn.us/fisheries/areas/bemidji/index.html](http://www.dnr.state.mn.us/fisheries/areas/bemidji/index.html)





**Legend**

- Designated Trout Stream
- Trout Stream Tributary
- Fishing easement
- Wheelchair Accessible Platforms
- County Roads
- Township Roads
- Public Land

